

200-401^{Q&As}

Managing Industrial Networks with Cisco Networking Technologies
(IMINS)

Pass Cisco 200-401 Exam with 100% Guarantee

Free Download Real Questions & Answers **PDF** and **VCE** file from:

<https://www.leads4pass.com/200-401.html>

100% Passing Guarantee
100% Money Back Assurance

Following Questions and Answers are all new published by Cisco
Official Exam Center

- ⚙ **Instant Download** After Purchase
- ⚙ **100% Money Back** Guarantee
- ⚙ **365 Days** Free Update
- ⚙ **800,000+** Satisfied Customers



QUESTION 1

In which two ways could you minimize the impact of monitoring an industrial network? (Choose two.)

- A. Send random messages to a device and see what the response is.
- B. Do frequent ping sweeps to industrial devices to check for their proper operations.
- C. Make a copy of all the network traffic and analyze it offline.
- D. Use an industrial-network-grade IDS-IPS system.

Correct Answer: CD

QUESTION 2

Which two ports does EtherNet/IP use to communicate? (Choose two.)

- A. TCP 44818
- B. UDP 44818
- C. TCP 502
- D. UDP 502
- E. TCP 2222
- F. UDP 2222

Correct Answer: AF

QUESTION 3

DRAG DROP

Select and Place:

Drag the steps on the left and arrange them in the order they should be completed when commissioning an industrial Ethernet switch on the right.	
Wire the switch to the DC power supply	Step 1
Wire the DC power supply	Step 2
Mount the switch on the DIN rail	Step 3
Connect Patch cords	Step 4
Wire the switch ground to common ground	Step 5
Perform Switch configuration	Step 6

Select and Place:

Drag the steps on the left and arrange them in the order they should be completed when commissioning an industrial Ethernet switch on the right.	
Wire the switch to the DC power supply	Step 1
Wire the DC power supply	Step 2
Mount the switch on the DIN rail	Step 3
Connect Patch cords	Step 4
Wire the switch ground to common ground	Step 5
Perform Switch configuration	Step 6

Correct Answer:

Drag the steps on the left and arrange them in the order they should be completed when commissioning an industrial Ethernet switch on the right.	
	Mount the switch on the DIN rail
	Wire the switch ground to common ground
	Wire the DC power supply
	Wire the switch to the DC power supply
	Perform Switch configuration
	Connect Patch cords

QUESTION 4

With a Cisco IE 2000 switch, what does a port status LED indicate when it is solid green?

- A. The port is sending or receiving data.
- B. A link is present.
- C. No link is present.
- D. There is a link fault.
- E. The port is not forwarding.

Correct Answer: B

QUESTION 5

Exhibit:



Which two statements are correct for a safe wiring installation to the terminal block of the switch or endpoint? (Choose two.)

- A. Insert a green ground wire into the terminal block that is marked RT for return.
- B. Verify that DC power is live and within 24 VDC voltage range before starting wiring.
- C. Verify that the DC power circuit includes an overcurrent protective device that limits the DC current to 5
- D.
- E. Because this is a low-voltage DC circuit, anyone can install this wiring without electrical training or qualifications.
- F. Connect the positive 24 VDC conductor to the V terminal and connect the negative 24 VDC return wire to the RT terminal.
- G. A ground wire can optionally be connected to the screw terminal on the front of the switch.

Correct Answer: CE

QUESTION 6

What are two recommended tools or commands that allow you to troubleshoot connectivity between two devices in different IP networks? (Choose two.)

- A. show interface status
- B. show spanning-tree
- C. ping
- D. show interfaces gigabitEthernet x/y switchport
- E. traceroute
- F. show interface

Correct Answer: CE

QUESTION 7

Exhibit:

```

interface FastEthernet1/1      !
switchport access vlan 102    interface Vlan101
!                               ip address 192.168.1.1 255.255.255.0
interface FastEthernet1/2      cdp enable
switchport access vlan 104     !
!                               interface Vlan102
interface FastEthernet1/3      ip address 192.168.2.1 255.255.255.0
switchport access vlan 103     cdp enable
!                               !
interface FastEthernet1/4      interface Vlan103
switchport access vlan 101     ip address 192.168.3.1 255.255.255.128
!                               cdp enable
interface FastEthernet1/5      !
switchport trunk native vlan 103 interface Vlan104
switchport mode trunk          ip address 192.168.3.129 255.255.255.128
!                               cdp enable
interface Vlan1                !
no ip address                  ip classless

```

Refer to the exhibit. Which port should a PLC with IP address 192.168.3.65 be plugged into in order to communicate to the rest of the network?

- A. FastEthernet1/1
- B. FastEthernet1/2
- C. FastEthernet1/3
- D. FastEthernet1/4
- E. FastEthernet1/5

Correct Answer: C

QUESTION 8

How does the optical time domain reflectometer use "backscattered" light to make measurements?

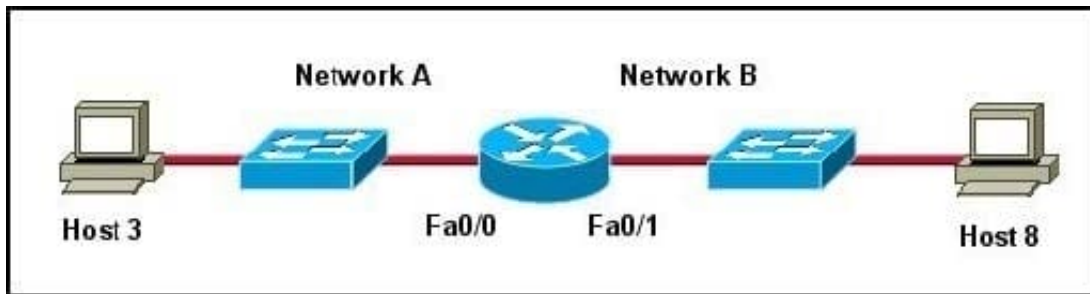
- A. It uses pulses to locate and test for sheath faults, damaged conductors, loose connectors, splices, bridge taps, split pairs, and other problems.
- B. It performs wiremapping to measure that all pins are correctly connected.

- C. It correlates the returned light pulses with a location in the fiber.
- D. It measures light-pulse width to measure that all pins are correctly connected.

Correct Answer: C

QUESTION 9

Exhibit:



Refer to the exhibit. Host 3 on Network A is sending data to Host 8 on Network B. Which address is the default gateway of Host 3?

- A. the address of the switch interface that is connected to router interface Fa0/0
- B. the address of the switch interface that is connected to router interface Fa0/1
- C. the address of the host that is connected to Network A
- D. the address of the host that is connected to Network B
- E. the address of the router interface Fa0/0
- F. the address of the router interface Fa0/1

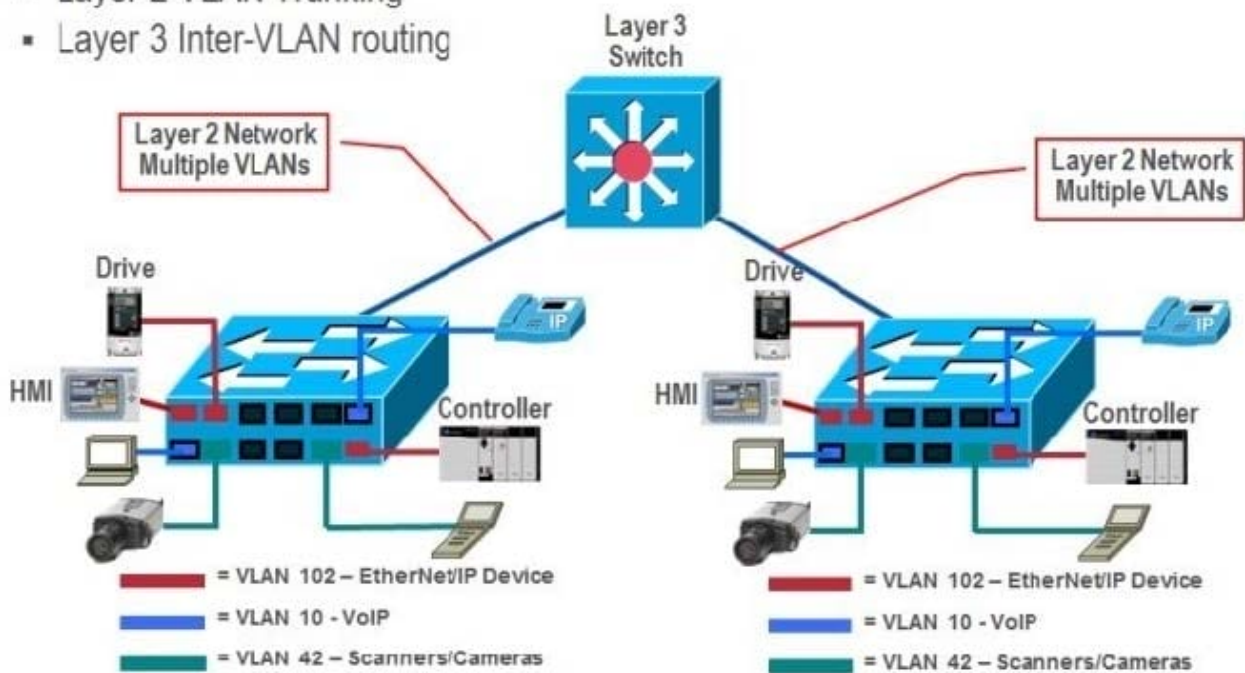
Correct Answer: E

QUESTION 10

Exhibit: Refer to the exhibit. What are three traffic and interconnection requirements for the devices in the exhibit? (Choose three.)

Multi-Layer Switch

- Layer 2 VLAN Trunking
- Layer 3 Inter-VLAN routing



A. The EtherNet/IP drive connections are in a high-voltage area and need protection from electromagnetic noise, so shielded cable that is rated for 600 V is advised.

B. EtherNet/IP devices such as the controller, drive, VoIP phone, and IP camera should be in the same VLAN.

C. CIP traffic has the highest bandwidth requirement so it needs the highest QoS setting.

D. EtherNet/IP drive traffic has high sensitivity to random drops, latency, and jitter.

E. Real-time motion control and VoIP traffic can share the same VLAN with the proper QoS setting.

F. IEEE1588 and PTP are important for ensuring real-time synchronization.

Correct Answer: ADF

QUESTION 11

What is a reason to use privileged EXEC mode on an industrial switch?

- A. to verify commands that you have entered
- B. to change terminal settings
- C. to configure VLAN parameters
- D. to configure parameters that apply to the entire switch

Correct Answer: A

QUESTION 12

You are troubleshooting a connectivity problem and want to isolate the problem. You suspect that a router on the route to an unreachable network is at fault. Which command would you issue to see where the packets stop?

- A. router#ping
- B. router#tracert
- C. router#show ip route
- D. router#show cdp neighbors
- E. router#traceroute

Correct Answer: E

QUESTION 13

An Ethernet cable is attached to a PC NIC and then attached to a switch port. The PC power is turned on and the switch port link LED turns green. The link light indicates what two conditions? (Choose two.)

- A. Layer 2 communication has been established between the PC and switch.
- B. The PC has received a DHCP address.
- C. Traffic is being sent from the switch to the PC.
- D. If flashing, the green LED indicates port speed of 100 Mb/s.
- E. The Layer 1 media is functioning between the PC and switch.
- F. The switch port is functioning as a half-duplex connection.

Correct Answer: AE

QUESTION 14

Which of the following correctly pairs the dotted decimal subnet mask with the correct number of binary bits that represent the subnet mask?

- A. 255.255.255.192 and /25
- B. 255.255.255.248 and /28
- C. 255.255.255.224 and /26
- D. 255.255.255.248 and /27

E. 255.255.255.240 and /28

F. 255.255.255.240 and /16

Correct Answer: E

QUESTION 15

The network administrator is using a Windows PC application that is called putty.exe for remote communication to a switch for network troubleshooting. Which two protocols could be used during this communication? (Choose two).

A. SNMP

B. HTTP

C. Telnet

D. RMON

E. SSH

Correct Answer: CE

[200-401 PDF Dumps](#)

[200-401 VCE Dumps](#)

[200-401 Exam Questions](#)