

# 1Z0-632<sup>Q&As</sup>

PeopleSoft PeopleTools 8.5x Implementation Essentials

## Pass Oracle 1Z0-632 Exam with 100% Guarantee

Free Download Real Questions & Answers **PDF** and **VCE** file from:

<https://www.leads4pass.com/1z0-632.html>

100% Passing Guarantee  
100% Money Back Assurance

Following Questions and Answers are all new published by Oracle  
Official Exam Center

-  **Instant Download** After Purchase
-  **100% Money Back** Guarantee
-  **365 Days** Free Update
-  **800,000+** Satisfied Customers



## QUESTION 1

You are testing the new Customer Table page and notice that you are missing a Return to Search button on the page.

**Customer Table**

**Customer:** AAB

**Contract Date:** 01/01/2000 31


**\*Description:** ABN AMRO Bank


**Short Description:** ABN AMRO

**Telephone:** 020442 14 55 **Ticker Symbol**

**Street** Buitenveldersien 101

**City** Amsterdam

**Country** NLD  Netherlands

**State**  

**Zip Code** 1082 VB

**Customer Type**

Customer

Partner

Employee

To add this button in Application Designer, open the Component Properties dialog box and \_\_\_\_\_.

- A. On the Internet tab, select Return to Search
- B. On the Internet tab, select Page Navigation in History
- C. On the Use tab, select Update/Display
- D. On the Internet tab, select Return to List
- E. On the Use tab, select Return to Search

Correct Answer: D

Reference: [https://docs.oracle.com/cd/E41633\\_01/pt853pbh1/eng/pt/tapd/task\\_SettingComponentProperties-0774bd.html](https://docs.oracle.com/cd/E41633_01/pt853pbh1/eng/pt/tapd/task_SettingComponentProperties-0774bd.html)

## QUESTION 2

Assume that you open a PeopleSoft application record definition using Application Designer. Which two of the following

statements are false? (Choose two.)

- A. In Application Designer, with a record definition open, you can insert additional fields
- B. Any changes made to the record definition in Application Designer are stored in a PeopleTools table as application metadata
- C. In Application Designer, with a record definition open, you can view transactional application data, such as inventory items provided by a vendor
- D. In Application Designer, with a record definition open, you can add or update transactional application data, such as adding a new inventory item
- E. In Application Designer, with a record definition open, you can modify the key structure of the record definition
- F. In Application Designer, with a record definition open, you can set a record field to be a required field for which an end user must specify a value when adding a new row of transactional data

Correct Answer: BF

---

### QUESTION 3

When you are modifying, customizing, or configuring PeopleSoft application definitions using Application Designer, which two statements are true regarding the impact on other application elements? (Choose two.)

- A. Running an alter table process in Application Designer is required only during major upgrades, not after small changes to a single record definition
- B. PeopleTools provides utilities to help you determine relationships between application definitions, such as PeopleTools cross-reference reports and the Find Definition References option
- C. If you modify field definition properties or record definition properties, the PeopleTools system insanity and automatically synchronizes the definition changes with the underlying SQL database table
- D. Changing a single field property, such as the field name or type, typically has no effect on other definitions such as records or pages
- E. If you alter a table, you must rebuild any views that reference the altered table

Correct Answer: BE

---

### QUESTION 4

Which two statements are true about how PeopleCode on the SavePreChange and SavePostChange events is processed? (Choose two.)

- A. When placed at the component record level, such PeopleCode triggers a Save when a row is changed
- B. When placed at the component record level, such PeopleCode runs once per row when the user clicks Save
- C. When placed at the component record level, such PeopleCode runs once when the user clicks Save
- D. When placed at the component level, such PeopleCode triggers a Save when data on the page is changed

E. When placed at the component level, such PeopleCode runs once when the user clicks Save

F. When placed at the component level, such PeopleCode runs once per row when the user clicks Save

Correct Answer: BD

---

**QUESTION 5**

You are asked to modify the Customer Products Purchased application to provide auto complete on the search page for the customer name. This application uses the following definitions.

- Search record: PSU\_CUST\_TBL
- Record: PSU\_CUST\_PROD
- Page: PSU\_CUST\_PROD
- Component: PSU\_CUST\_PROD

How will you implement this change?

A. Select the Enable Autocomplete when used in Search Record check box for the DESCR field on the PSU\_CUST\_PROD record

B. Select the Enable Autocomplete when used in Search Record check box for the CUSTOMER\_ID field on the PSU\_CUST\_PROD record

C. Select the Force Search Processing check box on the Use tab of the Component Properties dialog box for PSU\_CUST\_PROD

D. Select the Enable Autocomplete when used in Search Record check box for the DESCR field on the PSU\_CUST\_TBL record

E. Select the Enable Autocomplete when used in Search Record check box for the CUSTOMER\_ID field on the PSU\_CUST\_TBL record

F. Select the Show Prompt Button check box for the DESCR field on the PSU\_CUST\_PROD page

Correct Answer: C

---

**QUESTION 6**

What are the required steps for using a PeopleCode application class? Arrange them in the correct order.

1. Declare an object of the application class.
2. Import the application class.
3. Invoke methods or use properties.
4. Instantiate the object.
5. Initialize the object.

A. 1, 2, 5, 3

B. 1, 2, 4, 5, 3

C. 2, 1, 4, 3

D. 1, 2, 4, 3

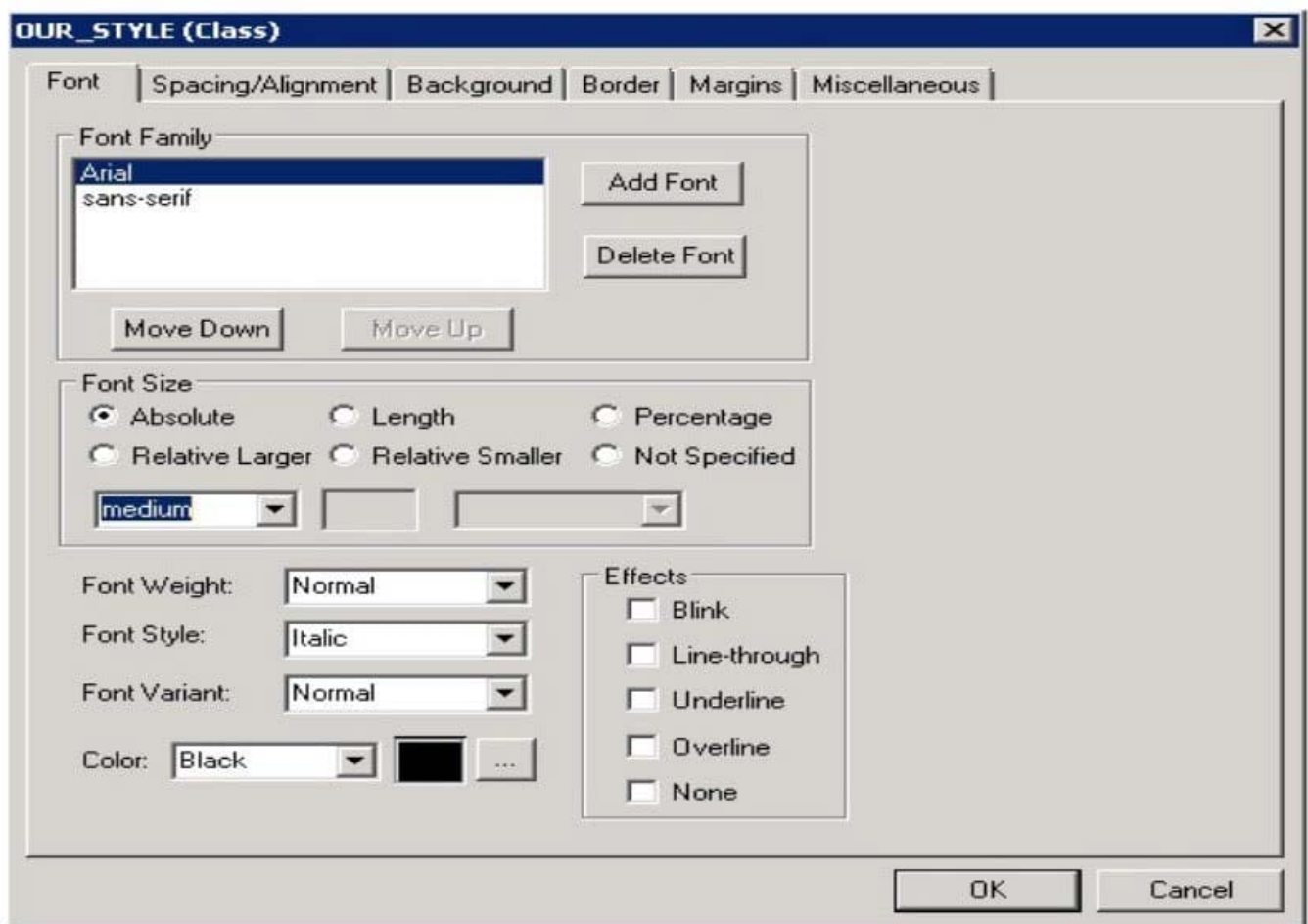
E. 2, 1, 4, 5, 3

Correct Answer: E

Reference: [https://docs.oracle.com/cd/E13292\\_01/pt849pbr0/eng/psbooks/tpcr/htm/tpcr07.htm](https://docs.oracle.com/cd/E13292_01/pt849pbr0/eng/psbooks/tpcr/htm/tpcr07.htm)

## QUESTION 7

A colleague needs to update a custom cascading style sheet (CSS) style for your team's fluid application. She has the style definition shown in this exhibit open in Application Designer, but isn't sure if she has opened the correct style definition and asks for your advice.



How do you know she does not have a fluid CSS style open?

A. The fluid user interface does not use the Arial or the sans-serif fonts. The fluid user interface uses only the Lucida Grande and Helvetica Neue fonts

B. In the fluid user interface, font color is not set on the style definition. The current branding theme is what determines the font color for the fluid user interface display

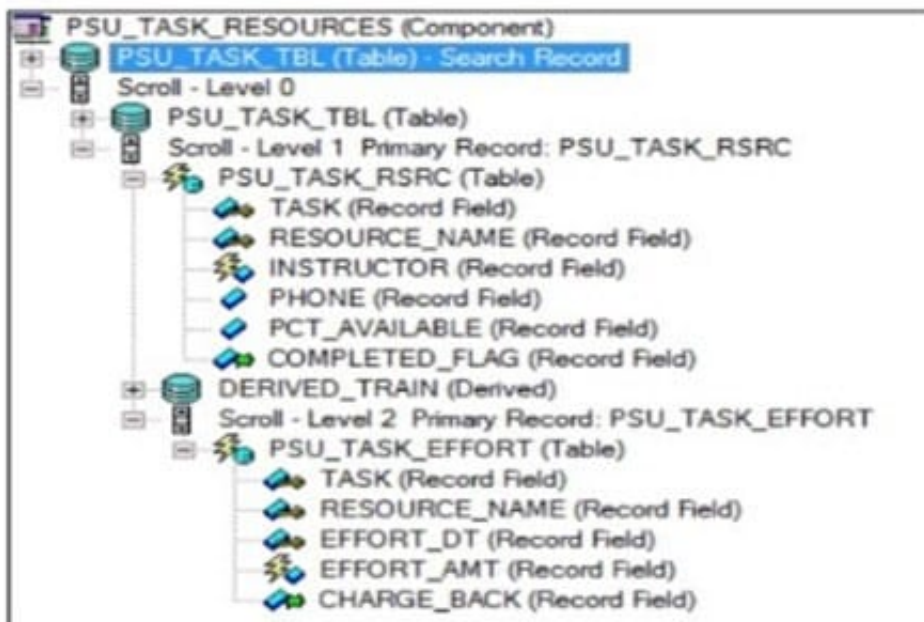
- C. The fluid user interface does not use absolute font sizes. Only relative font sizes apply to the dynamic nature of the fluid user interface
- D. The fluid user interface uses only free form style sheets, and this style sheet is a fixed from style sheet
- E. Fluid style sheets all have \_FL appended to the style name

Correct Answer: D

Reference: <http://technoeureka.blogspot.com/2018/03/applying-css-styling-to-field-values-on.html>

## QUESTION 8

This exhibit shows the Structure tab of the component definition.



The following PeopleCode program has been placed on the RowInit event for the Level 2 component record (PSU\_TASK\_EFFORT)

```

If PSU_TASK_RSRC.COMPLETED_FLAG = "Y" Then
    Local Record &Rec_TaskEffort = GetRecord();
    For &i = 1 To &Rec_TaskEffort.FieldCount
        &Rec_TaskEffort.GetField(&i).Enabled = False;
    End-For;
End-If;
    
```

Which three changes are required to move this program to the RowInit event for the Level 1 component record (PSU\_TASK\_RSRC)? (Choose three.)

- A. Add an outer loop to loop through each row in the level 2 rowset
- B. Instantiate the level 2 rowset from the level 1 row
- C. Add on outer loop to loop through each record in the level 2 rowset

- D. Instantiate the level 1 row
- E. For each level 2 row, instantiate a record object
- F. Instantiate a record object for the level 1 row

Correct Answer: BCF

---

### QUESTION 9

You have these items selected in the Suppress on Form Factor group box on the Fluid tab for a page control.



How will the system treat this control?

- A. PeopleTools will compress the size of this control to reduce the amount of data sent over the wireless network for smartphones and tablets
- B. The control will display only a laptop and desktop computers
- C. The control will display only on smartphones and tablets
- D. The control will consume less space on the page when rendered on a smartphone or tablet

Correct Answer: D

Reference: <https://pe0ples0ft.blogspot.com/2017/09/fluid-ui-working-with-grids.html>

---

### QUESTION 10

You have a record definition open in Application Designer, and when you select the Build menu, you notice that the Current Definition option is disabled. (greyed out.) Why did this happen?

- A. You have already build the table
- B. The record definition Record Type is set to Dynamic View
- C. You saved the record definition using a non-standard SQL table name
- D. You are not connected to the database

Correct Answer: C

---

### QUESTION 11

Input	Output
Dr. Jane Smith, Ph.D.	Dr. Jane Smith
Mark Larsen, B.A.	Mark Larsen
Dr. Gustavo Hinojosa, M.D.	Dr. Gustavo Hinojosa
Vivek Patel, B.S.	Vivek Patel
Jonathan Marsh, M.B.A.	Jonathan Marsh

Which PeopleCode program will take the input student name values and produce the output values?

- A. 

```
&comma_pos = Find(",", &student);  
&out = Substring(&student, 1, &comma_pos - 1);
```
- B. 

```
&out = LTrim(&student, ",");
```
- C. 

```
&out = RTrim(&student, ",");
```
- D. 

```
&out = LTrim(&student, ",. ABDMPSh");
```
- E. 

```
&comma_pos = Find(",", &student);  
&length = Len(&student);  
&out = Substring(&student, 1, &length - &comma_pos);
```
- F. 

```
&out = RTrim(&student, ",. ABDMPSh");
```

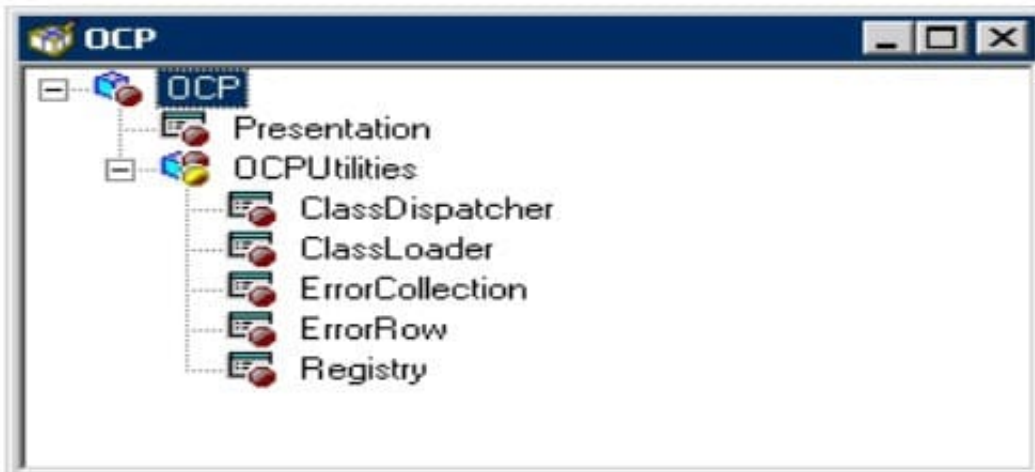
A. B. C. D. E. F.

Correct Answer: D

## QUESTION 12

Review the following definition:





Select the correct PeopleCode statement to declare an object of the ErrorRow class.

- A. Component OCP:OCPUtilities: ErrorRow andNewObject
- B. Component andNewObject extends ErrorRow;
- C. Row OCP:OCPUtilities:ErrorRow andNewObject;
- D. andNewObject = create OCP:OCPUtilities:ErrorRow();
- E. andNewObject = Get (OCP:OCPUtilities:ErrorRow);
- F. Component OCP.OCPUtilities.ErrorRow andNewObject

Correct Answer: A

### QUESTION 13

What should you do to change the default fluid homepage after signing in to PeopleSoft?

- A. Modify the Default Homepage setting in a PeopleTools security permission list
- B. Rename your set of homepages on the Personalize Homepage
- C. Make sure that the fluid homepage you want to appear first the next time you sign in is displaying when you sign out of the system
- D. Reorder the homepage list on the Personalize Homepage page so that the homepage you want is at the top of the homepage list

Correct Answer: D

### QUESTION 14

Select three changes to a record definition that require you to rebuild the SQL table. (Choose three.)

- A. You change an ascending key to a descending key
- B. You deselect the Alternate Search Key check box
- C. You change the length of a non-key field
- D. You deselect the Search Key check box (only) for a field
- E. You change the label of a key field

Correct Answer: ACD

### QUESTION 15

You begin to register a component using the Registration Wizard. What should you do based on the values that appear in the dialog box?

Will this component be accessed as target content or as a homepage pagelet?  
 Target Content  Homepage Pagelet

Portal Name: EMPLOYEE

Folder Name: PSU\_EMPLOYEE

Content Reference Name: TS\_EMP\_REVIEW\_GBL

Content Reference Label: Appraisals

Long Description (254 Character): Enter, modify, and view employee reviews

Sequence Number: 5 Product: PT

Template Name: DEFAULT\_TEMPLATE

Object Owner Id:

Node Name: PSFT\_TRN

Always use default local node?

Enter the base URI to be used when you click the "Open Selected" buttons. Example: <http://localhost/psp/ps/>

"Open" URI Base: <http://eddpr40p1.us.oracle.com:8010/psp/T1B84801/>

- A. Select the Always use default local node? Check box and then continue the registration
- B. Continue registering the component as is
- C. Stop the registration process to investigate why this component is already registered
- D. Change the user-facing fields to mixed case and make them less technical, and then continue registering the component

Correct Answer: B

[Latest 1Z0-632 Dumps](#)

[1Z0-632 VCE Dumps](#)

[1Z0-632 Exam Questions](#)