

1Z0-419^{Q&As}

Implementation Application Development Framework

Pass Oracle 1Z0-419 Exam with 100% Guarantee

Free Download Real Questions & Answers **PDF** and **VCE** file from:

<https://www.leads4pass.com/1z0-419.html>

100% Passing Guarantee
100% Money Back Assurance

Following Questions and Answers are all new published by Oracle
Official Exam Center

- ⚙️ **Instant Download** After Purchase
- ⚙️ **100% Money Back** Guarantee
- ⚙️ **365 Days** Free Update
- ⚙️ **800,000+** Satisfied Customers



QUESTION 1

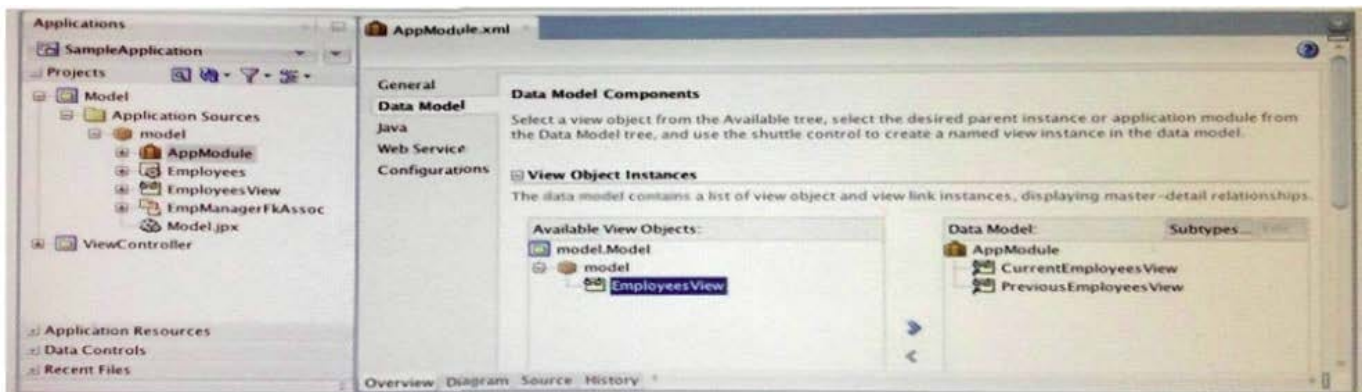
Which three options are available in the ADF Controller that are not available in the generic JSF 2.0 controller layer? (Choose three.)

- A. pageflow scope: a memory scope for managed beans that is available for several pages (longer than a request scope and shorter than a session scope)
- B. ability to break the page flow of an application into multiple files
- C. subflows that can be included as regions inside a page
- D. method calls as part of the definition of a page flow
- E. defining managed beans that contain references to components on a page

Correct Answer: ACE

QUESTION 2

View the Exhibit



Which three options are true about the scenario in the Exhibit? (Choose three)

- A. Two separate view object instances allow you, at run time, to maintain two separate current row indicators on each instance respectively, to display separate records at the same time.
- B. Two separate view object instances defined through the same application module create separate entity object caches, allowing users to modify records in their own independent transactions.
- C. Two separate view object instances exposed through the application module allow you to apply separate view criteria and bind variable values to show separate result sets.
- D. Under the relating AppModuleDataControl in the JDeveloper Data Controls window, each view object instance appears as a separate selectable data collection
- E. ADF Faces restricts developers from using the same view object instance across pages, so developers at design time must create multiple separate view object instances.

Correct Answer: ACD

QUESTION 3

During design time, you define two root application modules, each with a single view object. At run time, you have a single page exposing each view object as a separate table on the same page. Three users access the page at run time simultaneously

Disregarding application module pooling, how many application module instances are instantiated to serve the three users at run time? (Choose the best answer.)

- A. 0
- B. 1
- C. 2
- D. 3
- E. 6

Correct Answer: E

QUESTION 4

Consider a case where a view does not load with the expected data. Where would you set a breakpoint to debug the issue? (Choose the best answer.)

- A. the executable binding for the iterator on the pagedef for the view
- B. a router activity that is used to determine where to send the user after selecting a row in the view
- C. the partialTriggers property of the data bound component in the view
- D. the value binding for the iterator on the pagedef for the view

Correct Answer: D

QUESTION 5

Which three statements are true about declarative features of view objects? (Choose three.)

- A. You can use view object bind variables to parameterize a view object where clause with values supplied at run time.
- B. By default, a view object instance retrieves all database rows into the view object cache.
- C. To implement master-detail behavior between two view object instances, you define an association between those instances.
- D. a view accessor defines a validation expression that you apply to a view object attribute.

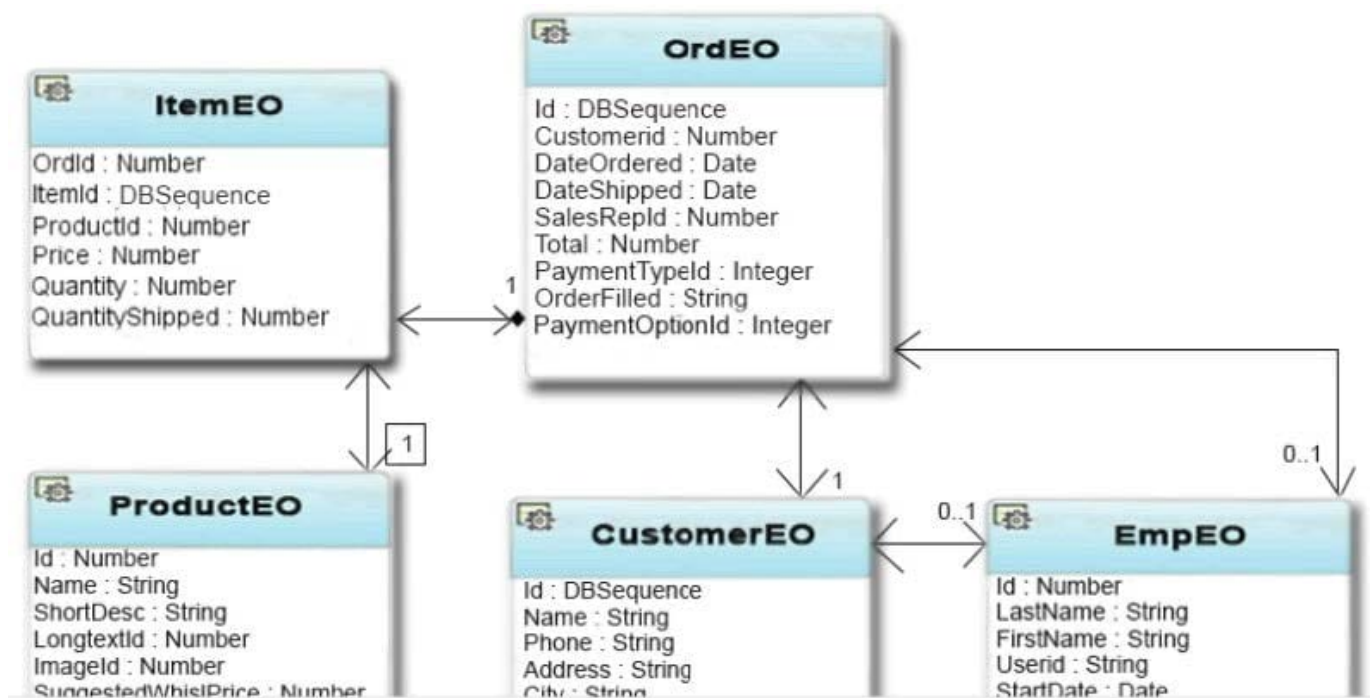
E. A view object can include attributes whose values are based on SQL expressions rather than mapping directly to a database column

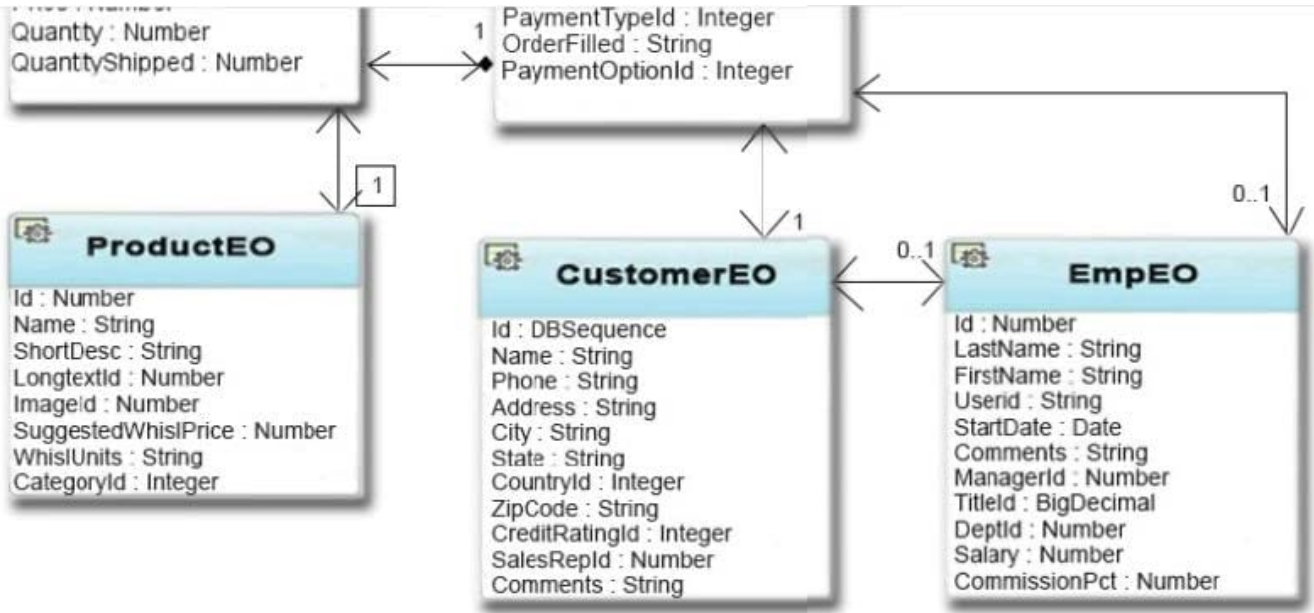
F. A view object definition can include many view criteria but you can choose which view criteria to apply for each view object instance.

Correct Answer: ACE

QUESTION 6

View the Exhibit A user interface requires a view of data for a customer order to include information about the order, items in the order, and information about the customer who placed the order. The application entities and their relationships are defined as shown in the Exhibit.





Which two steps would you perform to meet this requirement? (Choose two.)

- A. Create a default view object based on OrdEO, and add ItemEO and CustomerEO as reference entities to the view object
- B. Create default view objects based on OrdEO, ItemEO, and CustomerEO, and create view links based on the defined associations
- C. Create a view object based on SQL and define the SQL to select from the Ord, Item and Customer database tables
- D. Add attributes from the ItemEO and CustomerEO entities as needed
- E. Create calculated attributes as needed from the Order, Item, and Customer database tables.
- F. Set the ItemEO and CustomerEO attributes to updatable=NEVER.

Correct Answer: BD

QUESTION 7

Which two statements are true about an af:panelStretchLayout component? (Choose two.)

- A. a component placed in the center facet dynamically spaces out vertically to fill out the page height.
- B. if the top facet has more content then fits vertically, it automatically adds a vertical scroll bar.
- C. Facets without content in them do not show up at run time.
- D. Components placed in the center facet stretch to fill the horizontal space regardless of their containing layout container.
- E. You cannot include another panelStretchLayout component in the bottom facet.
- F. You can specify the vertical size for the top facet in pixels.

Correct Answer: AB

QUESTION 8

Which two statements are true about unbounded task flows? (Choose two.)

- A. They must have a defined entry point.
- B. They must have a defined exit point
- C. They may pass parameters to bounded task flows.
- D. They can use method calls but not routers to control navigation.
- E. Parameters cannot be passed to an unbounded task flow.

Correct Answer: CD

QUESTION 9

Which statement is true about the role of data controls in ADF? (Choose the best answer)

- A. They implement business service functions.
- B. They persist data from the database for display in the user interface
- C. They provide a consistent abstraction over the implementation details of a business service.
- D. They are a Java API that is called directly from each UI component to populate the component with data.
- E. They are the primary source of validation logic to control the behavior of your business service.

Correct Answer: C

QUESTION 10

Which two occur when a bounded task flow is created as a region on a page? (Choose two.)

- A. The transaction property of the task flow is set to "Use Existing Transaction if Possible."
- B. Any views defined as pages on the bounded task flow are changed to page fragments.
- C. An af:region tag is added to the page.
- D. The refresh property of the task flow binding is set to ifNeeded.
- E. a task flow binding is added to the page definition for the page.

Correct Answer: CE

QUESTION 11

You are prototyping an ADF application that uses ADF Business Components. However, the database schema that you can connect to does not contain any table. Which two declarative options are available to you to provide hard-coded data for the purposes of your prototype? (Choose two.)

- A. entity objects with default values
- B. placeholder data control
- C. static list view objects
- D. declarative managed beans

Correct Answer: BC

QUESTION 12

You create a default entity object based on the Employees table, using the wizard and accepting the default settings. Which option represents the source file(s) that are typically created for you? (Choose the best answer.)

- A. Employees.xml
- B. Employees.xml and EmployeesImplJava
- C. Employees.xml and Employees.sql
- D. EmployeesDefImpl.java
- E. EmployeesDefImpl.xml

Correct Answer: A

QUESTION 13

Which statement is true about an ADF Business Components list of values? (Choose the best answer.)

- A. It is always shown as a drop-down box in the user interface.
- B. It can be derived only from a non-updatable view object.
- C. It can show only one attribute in the selection list.
- D. It cannot have a blank item as an option.
- E. It can be represented as a radio group on an ADF Faces page.

Correct Answer: A

QUESTION 14

Which two options represent techniques that you would use together to deploy an ADF application? (Choose two.)

- A. Deploy an EAR file by using Enterprise Manager.
- B. Create an EAR deployment profile in JDeveloper.
- C. Deploy a WAR file by using Ant or ojdeploy.
- D. Create a JAR deployment profile for a shared library in JDeveloper.
- E. Deploy a WAR file by using Enterprise Manager

Correct Answer: AB

QUESTION 15

Which method must you override to ensure that messages are logged each time bind variable values are set in an application? (Choose the best answer.)

- A. bindParametersForCollection() method in any ViewObjectImpl that uses bind variables
- B. setBindVariables() method in any ViewObjectImpl that uses bind variables
- C. bindParametersForCollection() method in the super-class of ViewObjectImpl
- D. bindParametersForCollection() method in the super-class of ApplicationModuleImpl

Correct Answer: C

[Latest 1Z0-419 Dumps](#)

[1Z0-419 VCE Dumps](#)

[1Z0-419 Braindumps](#)