

# 1Y0-201<sup>Q&As</sup>

Managing Citrix XenDesktop 7.6 Solutions exam

## Pass Citrix 1Y0-201 Exam with 100% Guarantee

Free Download Real Questions & Answers **PDF** and **VCE** file from:

<https://www.leads4pass.com/1y0-201.html>

100% Passing Guarantee  
100% Money Back Assurance

Following Questions and Answers are all new published by Citrix  
Official Exam Center

- ⚙ **Instant Download** After Purchase
- ⚙ **100% Money Back** Guarantee
- ⚙ **365 Days** Free Update
- ⚙ **800,000+** Satisfied Customers



## QUESTION 1

Scenario: A Citrix Administrator is in the process of creating a new session machine catalog. On the \\Machine Management\\ page, \\Machine Creation Services (MCS)\\ is grayed out. What should the administrator do to enable this option for selection?

- A. Restart the Delivery Controller.
- B. Add a new resource connection.
- C. Use the New-BrokerCatalog PowerShell cmdlet.
- D. Install the \\Machine Creation Service Extension\\ on each Delivery Controller.

Correct Answer: B

---

## QUESTION 2

Scenario: A Citrix Administrator is attempting to troubleshoot a Machine Creation Services related issue and has configured logging for Machine Creation Services. In an effort to resolve the issue, the administrator restarted the Delivery

Controller. Now the administrator CANNOT find any data in the Machine Creation Services logs.

Why is there NO data in the Machine Creation Services log?

- A. Configuration Logging is disabled.
- B. Information in the Machine Creation Services log is copied to the log archive on restart.
- C. Machine Creation Services logging gets disabled when the Delivery Controller is restarted.
- D. The Machine Creation Services log was overwritten when the service associated with Machine Creation Services was restarted.

Correct Answer: D

---

## QUESTION 3

Scenario: A Citrix Administrator deployed a new session machine catalog using Machine Creation Services. During the deployment the administrator identified that a Desktop OS machine is unregistered but turned on. Which three logs could the administrator check to troubleshoot the issue? (Choose three.)

- A. The Citrix Configuration log
- B. The Virtual Delivery Agent logs
- C. The logs on the hypervisor console
- D. The Windows Event logs of the Delivery Controller

E. The Windows Event logs on the Desktop OS machine

Correct Answer: BDE

---

## QUESTION 4

Which report could a Citrix Administrator run to determine the number of users that have used Microsoft Visio in the last two months?

- A. Logon Performance
- B. ConcurrentSessions
- C. Hosted Application Usage
- D. Failed Server OS Machines

Correct Answer: D

---

## QUESTION 5

Which three options could a Citrix Administrator enable for users who connect to their provisioned desktop from Smart phones and tablets to improve their experience? (Choose three.)

- A. Legacy Graphics Mode
- B. Remote the combo box
- C. Automatic keyboard display
- D. Enhanced Desktop Experience
- E. Launch touch-optimized desktop

Correct Answer: BCE

---

## QUESTION 6

Scenario: Employees in an organization work two separate shifts and use pooled-random Desktop OS machines. When employees working at night end their shift, they disconnect from their Desktop OS machines. When employees working the day shift log on, their Desktop OS machines are NOT available.

What could a Citrix Administrator do to resolve this issue?

- A. Configure the '\\Reboot Schedule\\' in Citrix policies.
- B. Set '\\When Disconnected\\' to Suspend during peak hours.
- C. Set '\\When Disconnected\\' to Shutdown during peak hours.

D. Adjust Power Management settings in the Active Directory Group Policy.

Correct Answer: D

---

## QUESTION 7

Scenario: XenDesktop is being used in an environment to deliver App-V applications to users. A Citrix Administrator deploys a new App-V package to the App-V Publishing Server. The App-V package must be delivered to a specific group of

users through Citrix Studio. The administrator selects an existing Delivery Group in Citrix Studio and uses the '\\Add Applications\\' option. The list of installed applications on the master image does NOT display the newly created App-V application.

What should the administrator do to resolve this issue?

- A. Install the Citrix Connector for Microsoft System Center Configuration Manager and import all App-V Applications from SCCM.
- B. Verify that the App-V publishing settings are correct, run the task '\\Refresh App-V Application\\' and re-run the '\\Add Applications\\' task.
- C. Create a new Delivery Group, use '\\Applications\\' as Delivery Type and select the option '\\Enable App-V Applications\\' within the wizard.
- D. Specify the AppV Publishing Server through a GPO and apply this GPO to all servers within this Delivery Group. After the GPO is applied, re-run the '\\Add-Applications\\' task.

Correct Answer: B

---

## QUESTION 8

Scenario: A Citrix Administrator at a medical facility needs to set up kiosks for non-corporate users to launch an application that utilizes internal authentication. The administrator needs to configure the site store.OrgA.com to allow this. How should the administrator configure the store to accomplish this requirement?

- A. Configure a new store as internal only with remote access.
- B. Add a VPN in Remote Access for store.OrgA.com to allow access.
- C. Configure the existing store as internal only with Remote Access set to None.
- D. Create an anonymous store using the Delivery Controllers belonging to OrgA.

Correct Answer: D

---

## QUESTION 9

Scenario: A Citrix Administrator manages a XenDesktop environment where Provisioning Services is used to create and deploy Server and Desktop OS machines. The administrator needs to update the vDisk assigned to Desktop OS

machines with a new version of an application.

What must the administrator do to initiate the update?

- A. Merge the vDisk versions in the Provisioning Services Console.
- B. Create a new vDisk version in the Provisioning Services Console.
- C. Select '\\Update Machines\\' on the Machine Catalog in Citrix Studio.
- D. Select the Device Collection and restart the target device in the Provisioning Services Console.

Correct Answer: B

---

## QUESTION 10

### SIMULATION

Scenario: A Citrix Administrator has updated the Finance vDisk to include Microsoft Office 2013. The administrator has tested the Finance vDisk and now needs to merge all updates to the vDisk to maximize and reclaim disk space.

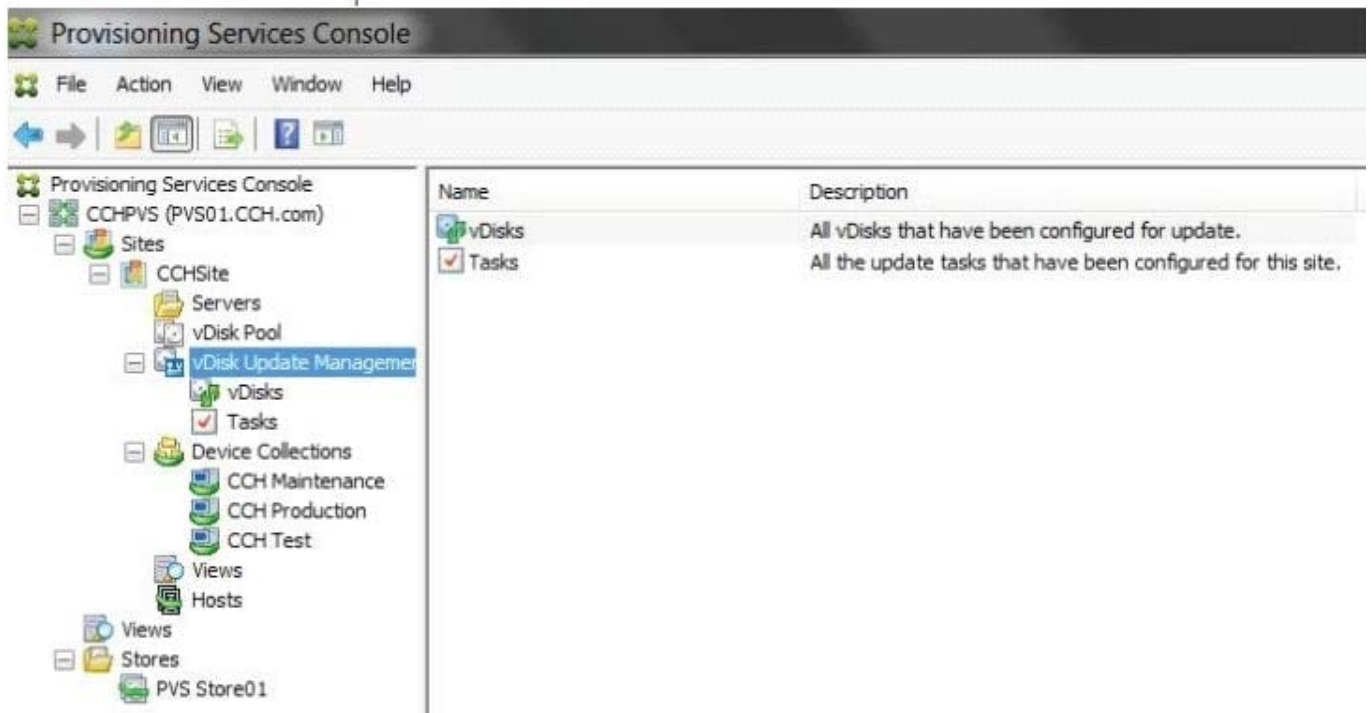
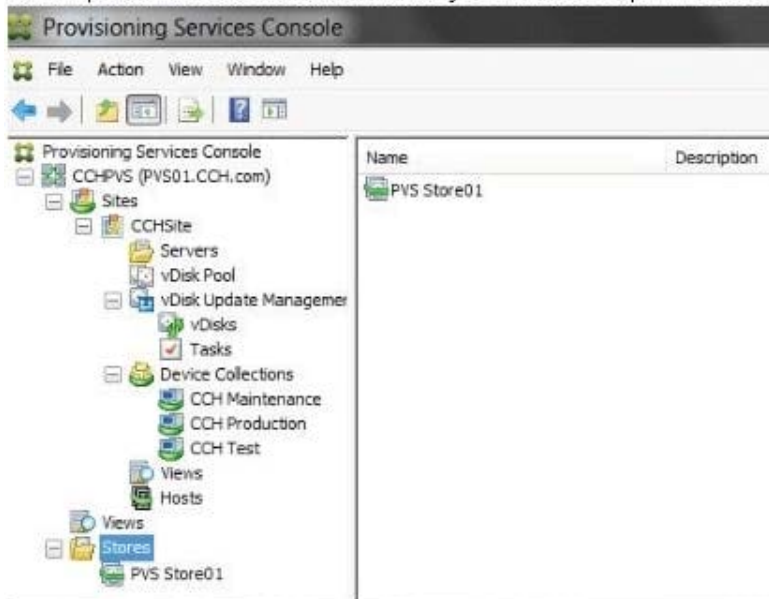
Members

of the Finance user group are expected to have access to Microsoft Office 2013 when they log on to desktops to which the Finance vDisk is assigned.

Tasks:

1.  
Merge all updates to the vDisk.
2.  
Ensure members of the Finance user group have access to Microsoft Office 2013 as stated in the scenario.

3. Complete the tasks that are necessary to meet the requirements outlined in the scenario.



3. Complete the tasks that are necessary to meet the requirements outlined in the scenario.

Correct Answer:

- 1) In Provisioning Services Console, click on vDisk Pool in the left pane then right click on the vDisk template and select Versions.
- 2) From the "vDisk Version" dialog window click on Merge.
- 3) From the "Merge" popup window select "Merge Base - Last base + all updates from that base" and "Set merge version access to:" "Production" then click on OK.
- 4) From the "vDisk Version" dialog window click on Done.

5) From the "vDisk Version dialog window click on Promote.

---

## QUESTION 11

Which component CANNOT be co-located with Delivery Controller on the same server?

- A. SQL Server
- B. License Server
- C. StoreFront Server
- D. Domain Controller

Correct Answer: D

---

## QUESTION 12

What will continue to function while a XenDesktop site database is offline?

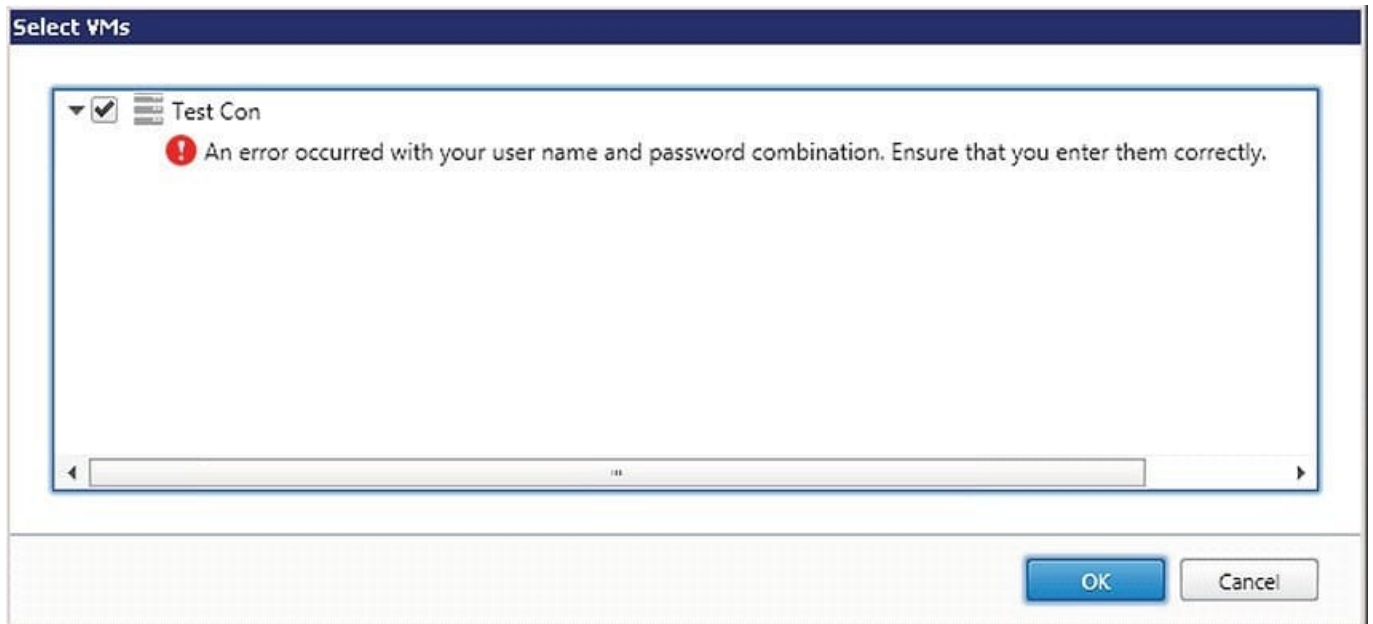
- A. Citrix Studio
- B. Citrix Director
- C. AnonymousConnections
- D. Existing user connections to Desktop OS machines

Correct Answer: D

---

## QUESTION 13

Scenario: While attempting to add machines to a Session Machine Catalog using Machine Creation Services, a Citrix Administrator receives an error message. Click on the Exhibit button to view the error message.



In which Citrix Studio node should the administrator go to resolve this error?

- A. Hosting
- B. Controllers
- C. Configuration
- D. Machine Catalogs

Correct Answer: A

---

#### QUESTION 14

Scenario: A user's Desktop OS machine with Personal vDisk (PvD) is unresponsive. The user needs to access applications installed on the PvD urgently, due to an important deadline. How could a Citrix Administrator resolve this issue?

- A. Use Citrix Director to reset the PvD
- B. Use Citrix Studio to restore the user's initial settings.
- C. Run the ctxpvd.exe command on the user's system.
- D. Run a PowerShell cmdlet to restore the user's PvD to a new virtual machine.

Correct Answer: D

---

#### QUESTION 15

Scenario: A Desktop OS machine is unresponsive. The user connected to the machine was in the process of creating a very large presentation using Microsoft PowerPoint. The presentation had NOT been saved prior to the machine



becoming unresponsive.

What should a Citrix Administrator do to resolve this issue while preventing data loss?

- A. Migrate the Desktop OS machine to a different host.
- B. Restart the Desktop OS machine from Citrix Studio.
- C. Move the target device to another Provisioning Services server.
- D. Use Citrix Director to locate and terminate any rogue processes.

Correct Answer: C

[Latest 1Y0-201 Dumps](#)

[1Y0-201 Practice Test](#)

[1Y0-201 Study Guide](#)