

## 1D0-571<sup>Q&As</sup>

CIW V5 Security Essentials

**Pass CIW 1D0-571 Exam with 100% Guarantee**

Free Download Real Questions & Answers **PDF** and **VCE** file from:

<https://www.leads4pass.com/1d0-571.html>

100% Passing Guarantee  
100% Money Back Assurance

Following Questions and Answers are all new published by CIW Official Exam Center

-  **Instant Download** After Purchase
-  **100% Money Back** Guarantee
-  **365 Days** Free Update
-  **800,000+** Satisfied Customers



**QUESTION 1**

You have implemented a service on a Linux system that allows a user to read and edit resources. What is the function of this service?

- A. Authentication
- B. Data integrity
- C. Access control
- D. Intrusion detection

Correct Answer: C

---

**QUESTION 2**

Which of the following is a common problem, yet commonly overlooked, in regards to physical security in server rooms?

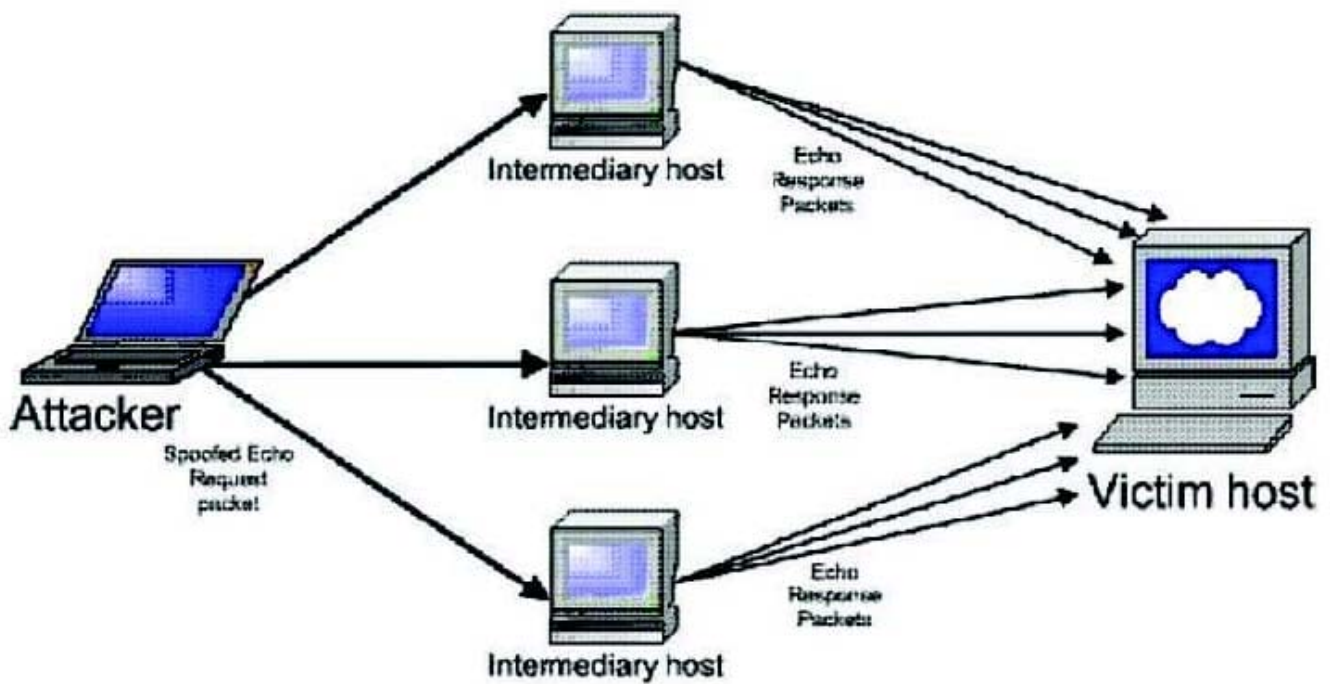
- A. Firewalls that do not have a dedicated backup
- B. False ceilings
- C. Logic bombs
- D. Biometric malfunctions

Correct Answer: B

---

**QUESTION 3**

Consider the following diagram:



Which type of attack is occurring?

- A. Polymorphic virus-based attack
- B. Denial-of-service attack
- C. Distributed denial-of-service attack
- D. Man-in-the-middle attack using a packet sniffer

Correct Answer: C

**QUESTION 4**

You have implemented a version of the Kerberos protocol for your network. What service does Kerberos primarily offer?

- A. Authentication
- B. Encryption
- C. Non-repudiation
- D. Data integrity

Correct Answer: A

**QUESTION 5**

Which of the following is a typical target of a trojan on a Linux system?

- A. Kernel modules
- B. Shared libraries
- C. Boot sector files
- D. System32 DLL files

Correct Answer: A

---

#### QUESTION 6

A security breach has occurred in which a third party was able to obtain and misuse legitimate authentication information. After investigation, you determined that the specific cause for the breach was that end users have been placing their passwords underneath their keyboards. Which step will best help you resolve this problem?

- A. Discipline specific end users as object lessons to the rest of the staff and reset passwords on all systems immediately.
- B. Change all passwords on the company servers immediately and inform end users that their passwords will be changing on a regular basis.
- C. Set passwords to expire at specific intervals and establish mandatory continual training sessions.
- D. Inform end users that their passwords will be changing on a regular basis and require more complex passwords.

Correct Answer: C

---

#### QUESTION 7

You want to create a certificate for use in a Secure Sockets Layer (SSL) session. Which of the following is responsible for verifying the identity of an individual and also issuing the certificate?

- A. Kerberos server
- B. Certificate authority
- C. Certificate revocation entity
- D. Certificate repository

Correct Answer: B

---

#### QUESTION 8

Your organization has made a particularly unpopular policy decision. Your supervisor fears that a series of attacks may occur as a result. You have been assigned to increase automated auditing on a server. When fulfilling this request, which of the following resources should you audit the most aggressively?

- A. Authentication databases, including directory servers
- B. Intrusion detection systems, especially those placed on sensitive networks
- C. Log files on firewall systems
- D. Firewall settings for desktop systems

Correct Answer: A

---

**QUESTION 9**

A disgruntled employee has discovered that the company Web server is not protected against a particular buffer overflow vulnerability. The disgruntled employee has created an application to take advantage of this vulnerability and secretly obtain sensitive data from the Web server's hard disk. This application sends a set of packets to the Web server that causes it to present an unauthenticated terminal with root privileges. What is the name for this particular type of attack?

- A. Man-in-the-middle attack
- B. Trojan
- C. Denial of service
- D. Zero-day attack

Correct Answer: D

---

**QUESTION 10**

Which tool is best suited for identifying applications and code on a Web server that can lead to a SQL injection attack?

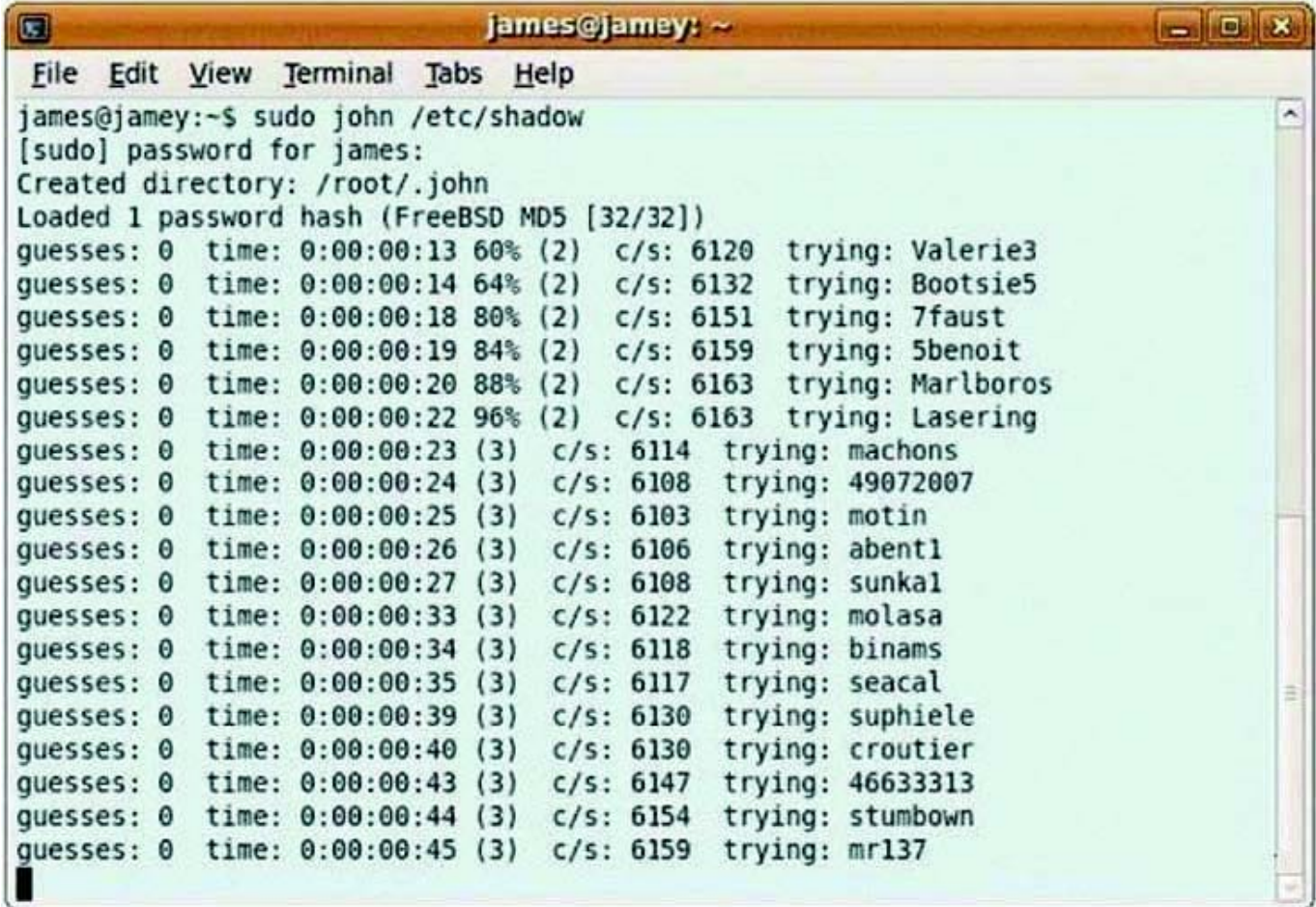
- A. A vulnerability scanner
- B. A packet sniffer
- C. An intrusion-detection system
- D. A network switch

Correct Answer: A

---

**QUESTION 11**

Consider the following image: From the information in this image, what type of attack is occurring?



```
james@jamey: ~  
File Edit View Terminal Tabs Help  
james@jamey:~$ sudo john /etc/shadow  
[sudo] password for james:  
Created directory: /root/.john  
Loaded 1 password hash (FreeBSD MD5 [32/32])  
guesses: 0 time: 0:00:00:13 60% (2) c/s: 6120 trying: Valerie3  
guesses: 0 time: 0:00:00:14 64% (2) c/s: 6132 trying: Bootsie5  
guesses: 0 time: 0:00:00:18 80% (2) c/s: 6151 trying: 7faust  
guesses: 0 time: 0:00:00:19 84% (2) c/s: 6159 trying: 5benoit  
guesses: 0 time: 0:00:00:20 88% (2) c/s: 6163 trying: Marlboros  
guesses: 0 time: 0:00:00:22 96% (2) c/s: 6163 trying: Lasering  
guesses: 0 time: 0:00:00:23 (3) c/s: 6114 trying: machons  
guesses: 0 time: 0:00:00:24 (3) c/s: 6108 trying: 49072007  
guesses: 0 time: 0:00:00:25 (3) c/s: 6103 trying: motin  
guesses: 0 time: 0:00:00:26 (3) c/s: 6106 trying: abent1  
guesses: 0 time: 0:00:00:27 (3) c/s: 6108 trying: sunkal  
guesses: 0 time: 0:00:00:33 (3) c/s: 6122 trying: molasa  
guesses: 0 time: 0:00:00:34 (3) c/s: 6118 trying: binams  
guesses: 0 time: 0:00:00:35 (3) c/s: 6117 trying: seacal  
guesses: 0 time: 0:00:00:39 (3) c/s: 6130 trying: suphiele  
guesses: 0 time: 0:00:00:40 (3) c/s: 6130 trying: croutier  
guesses: 0 time: 0:00:00:43 (3) c/s: 6147 trying: 46633313  
guesses: 0 time: 0:00:00:44 (3) c/s: 6154 trying: stumbown  
guesses: 0 time: 0:00:00:45 (3) c/s: 6159 trying: mr137
```

- A. A man-in-the-middle attack
- B. A brute-force attack
- C. A connection-hijacking attack
- D. A spoofing attack

Correct Answer: B

#### QUESTION 12

Which of the following applications can help determine whether a denial-of-service attack is occurring against a network host?

- A. The netstat command and a packet sniffer
- B. The ps command and a network scanner
- C. The ping command and User Manager
- D. The iptables command and Windows desktop firewall

Correct Answer: A

## QUESTION 13

Which of the following is most likely to address a problem with an operating system's ability to withstand an attack that attempts to exploit a buffer overflow?

- A. Firewall
- B. Software update
- C. Intrusion detection system
- D. Network scanner

Correct Answer: B

---

## QUESTION 14

You have been assigned to provide security measures for your office's reception area. Although the company needs to provide security measures, costs must be kept to a minimum. Which of the following tools is the most appropriate choice?

- A. Firewall
- B. Intrusion-detection system
- C. Camera
- D. Security guard

Correct Answer: C

---

## QUESTION 15

What is the primary use of hash (one-way) encryption in networking?

- A. Signing files, for data integrity
- B. Encrypting files, for data confidentiality
- C. Key exchange, for user authentication
- D. User authentication, for non-repudiation

Correct Answer: A

[1D0-571 VCE Dumps](#)

[1D0-571 Practice Test](#)

[1D0-571 Exam Questions](#)