

## 199-01<sup>Q&As</sup>

Riverbed Certified Solutions Professional

### Pass Riverbed 199-01 Exam with 100% Guarantee

Free Download Real Questions & Answers **PDF** and **VCE** file from:

<https://www.leads4pass.com/199-01.html>

100% Passing Guarantee  
100% Money Back Assurance

Following Questions and Answers are all new published by Riverbed  
Official Exam Center

-  **Instant Download** After Purchase
-  **100% Money Back** Guarantee
-  **365 Days** Free Update
-  **800,000+** Satisfied Customers



**QUESTION 1**

How can you provide updates to multiple Steelhead Mobile clients at the same time? (Select 2)

- A. Using profiles
- B. Using multiple Steelhead Mobile Controllers
- C. Using Group IDs
- D. Using policies

Correct Answer: CD

---

**QUESTION 2**

Which deployment options are available to Virtual SteelHead on ESXi?

- A. Physical In-path (with Riverbed bypass NIC)
- B. Virtual In-path
- C. Out-of-path
- D. Server-side Out-of-Path
- E. All of the above

Correct Answer: ABC

---

**QUESTION 3**

Under what circumstances would there be GRE traffic between the Interceptor and Steelhead appliances?

- A. Throughout the entire lifespan of a connection
- B. During connection teardown
- C. During connection setup
- D. GRE is not used but L2 is used during the entire connection
- E. GRE is never used between the Interceptor and Steelhead appliances

Correct Answer: C

---

**QUESTION 4**

When upgrading a Steelhead appliance from the CMC appliance what methodologies can be used? (Select 2)

- A. Upgrade from uploaded image
- B. Upgrade from the CMC appliance flash
- C. Automatic download from support.riverbed.com
- D. Upgrade from URL
- E. Upgrade from TFTP server

Correct Answer: AD

---

**QUESTION 5**

A firewall at a remote site on the WAN side of Steelhead appliance (A) is stripping out the 76 and 78 values in the TCP options field. Steelhead appliance (B) is in the local cluster of appliances communicating with an Interceptor appliance. The desired result is for optimization to continue between Steelhead appliance (A) and Steelhead appliance (B) for all traffic originating from the remote site. A suggestion is made to use fixed target rule(s) to meet this objective. Based on the information provided select the best answer from the choices below:

- A. On Steelhead appliance (A) configure a fixed-target rule to the Interceptor in-path address
- B. On Steelhead appliance (A) configure a fixed target rule to the Interceptor in-path address with Steelhead appliance (B) as the backup target.
- C. On Steelhead appliance (A) configure a fixed target rule to the Steelhead appliance (B) in-path address
- D. Fixed target rules will not work with Steelhead appliances virtually out of path and communicating with Interceptors
- E. TCP option 76 or 78 are not relevant when an Interceptor appliance is used, Peer Affinity will automatically achieve this objective

Correct Answer: C

---

**QUESTION 6**

What port number is configured on a Steelhead appliance to communicate to the TACACS+ server?

- A. 1645
- B. 1646
- C. 1812
- D. 389
- E. 49

Correct Answer: E

---

**QUESTION 7**

Company X has many offshore oil rigs they want to bring optimization to. The only available connection is through a satellite that has frequent bursts of packet loss. There are very few users per rig and HTTPS-based SharePoint performance is so poor they often time out pulling down even a small file. CIFS often does not work at all. They are considering the Steelhead Mobile solution to solve this problem. You suggest they deploy a Steelhead in-path at the data center and:

- A. Steelhead Mobile with FEC turned on to help with lossy links
- B. Steelhead Mobile with HS-TCP configuration
- C. Steelhead Mobile running MX-TCP to deal with the loss
- D. Deploy Steelhead appliances with MX-TCP to deal with the loss
- E. Deploy Steelhead appliances with HS-TCP, Window Scaling, fixed-target rules, and TCP New Reno to overcome the loss

Correct Answer: D

---

#### QUESTION 8

A customer wants to mark the IP precedence value for a passive FTP data connection as flash (flash = CS3). Which of the following are true? (Hint: Use the calculator)

- A. Specify qos dscp rule at client-side Steelhead appliance with a dest-port of 20 and with a DSCP value of 23
- B. Specify qos dscp rule at client-side Steelhead appliance with a dest-port of 20 and with a DSCP value of 24
- C. Specify qos dscp rule at server-side Steelhead appliance with a dest-port of 20 and with a DSCP value of 26
- D. Specify qos dscp rule at client-side Steelhead appliance with a dest-port of 20 and with a DSCP value of 26
- E. Specify qos dscp rule at server-side Steelhead appliance with a dest-port of 20 and with a DSCP value of 24

Correct Answer: B

---

#### QUESTION 9

While looking at the Current Connections page on a client-side Steelhead, you noticed that there is more CIFS traffic on the WAN than on the LAN for some connections. What may be the problem? 1) The source data is compressed or encrypted 2) File server not located on the same subnet as the server-side Steelhead 3) The Steelhead is counting both CIFS optimized and unoptimized traffic 4) CIFS read-ahead 5) CIFS write-behind

- A. 1, 4
- B. 4, 5
- C. 1, 2, 3
- D. 1, 2, 5
- E. 3, 5

Correct Answer: A

## QUESTION 10

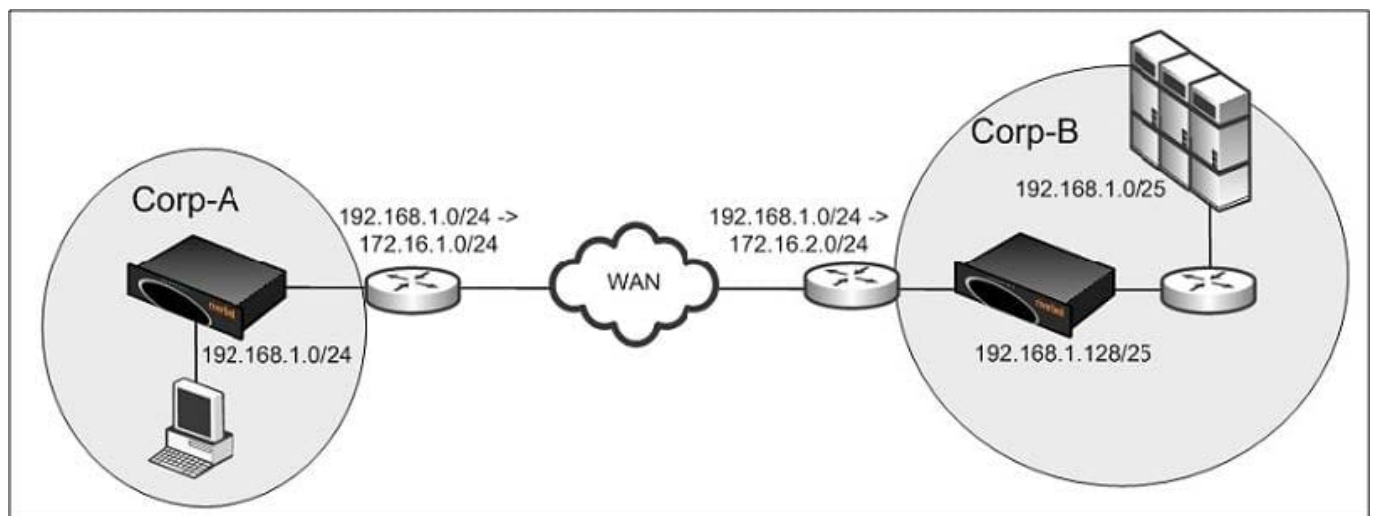
What can be monitored via the CMC appliance? (Select 2)

- A. Currently logged in users to Steelhead appliances or the CMC appliance
- B. Command history per CMC appliance user
- C. Rogue Steelhead appliances on the network
- D. Current connections for an individual Steelhead appliance

Correct Answer: BD

## QUESTION 11

Refer to the exhibit.



Corp-A and Corp-B have overlapping address space and therefore the network administrator implemented NAT to overcome this. Users from Corp-A NAT to 172.16.1.0/24 and users from Corp-B NAT to 172.16.2.0/24. Users in Corp-A use the destination address of 172.16.2.0/24 to access the resources in Corp-B. The servers in Corp-B use the client IP for authentication. You deploy the Steelhead appliance using the default WAN visibility mode but noticed all the connections are passed-through. What is the likely problem?

- A. When the Steelhead appliance in Corp-B opens the outer connection, it is using the source IP of 172.16.2.x instead of 192.168.1.x
- B. On the Steelhead appliance in Corp-B, there is a missing static route for the 192.168.1.0/25 network
- C. On the Steelhead appliance in Corp-A, there is a missing static route for the 172.16.2.0/24 network
- D. When the Steelhead appliance in Corp-B opens the outer connection, it is using the source IP of

192.168.1.x instead of 172.16.1.x

E. None of the above

Correct Answer: D

---

## QUESTION 12

What service needs to be allowed if you are enforcing outbound security in the Steelhead Mobile solution?

A. Rbtdebug.exe

B. Rbtmon.exe

C. Shmobile.exe

D. Rbtspport.exe

E. All of the above

Correct Answer: E

---

## QUESTION 13

The Interceptor appliance cluster can support how many optimized connections?

A. 50,000

B. 100,000

C. 200,000

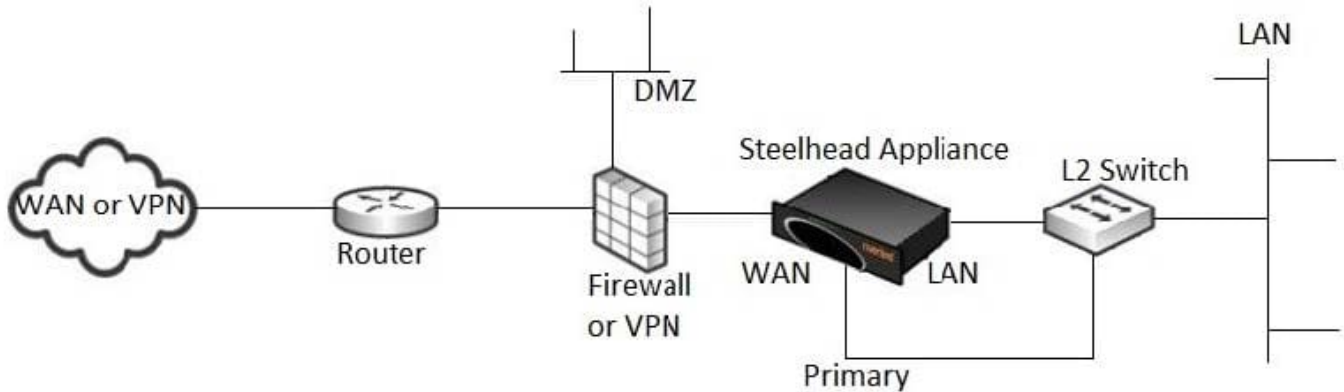
D. More than 200,000

Correct Answer: D

---

## QUESTION 14

Examine the diagram below. The customer needs to optimize data center servers and also servers within the DMZ but wants to keep the SteelHead behind the firewall. Which optimization mode would support this environment?



- A. Hybrid mode
- B. Virtual In-path mode
- C. WCCP or Interceptor mode
- D. Out-of-path mode
- E. In-path mode

Correct Answer: A

## QUESTION 15

It is not recommended to use the same Steelhead appliance to optimize both replication traffic and general user traffic because:

- A. Replication traffic uses 16 KB blocks and causes fragmentation in the datastore
- B. User traffic may contain sensitive traffic and should not be mixed with other traffic
- C. Replication traffic may cause admission control therefore affecting user traffic
- D. The traffic pattern between the two types of traffic is generally very different and therefore the datastore may wrap more quickly affecting performance

Correct Answer: D

[199-01 VCE Dumps](#)

[199-01 Study Guide](#)

[199-01 Exam Questions](#)