

# 156-915.77<sup>Q&As</sup>

Check Point Certified Security Expert Update

## Pass CheckPoint 156-915.77 Exam with 100% Guarantee

Free Download Real Questions & Answers **PDF** and **VCE** file from:

<https://www.leads4pass.com/156-915-77.html>

100% Passing Guarantee  
100% Money Back Assurance

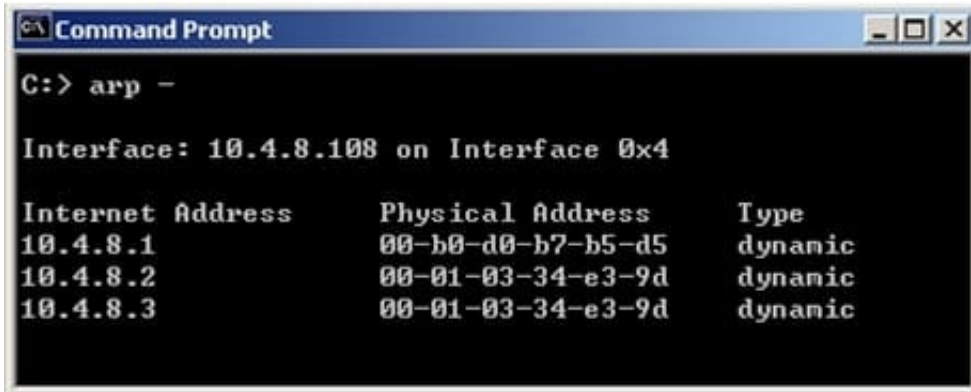
Following Questions and Answers are all new published by CheckPoint  
Official Exam Center

- ⚙ **Instant Download** After Purchase
- ⚙ **100% Money Back** Guarantee
- ⚙ **365 Days** Free Update
- ⚙ **800,000+** Satisfied Customers



## QUESTION 1

Fill in the blank.



In Load Sharing Unicast mode, the internal cluster IP address is 10.4.8.3. The internal interfaces on two members are 10.4.8.1 and 10.4.8.2. Internal host 10.4.8.108 Pings 10.4.8.3, and receives replies. The following is the ARP table from the internal Windows host 10.4.8.108. Review the exhibit and type the IP address of the member serving as the pivot machine in the space below.

A. 10.4.8.2

Correct Answer: A

## QUESTION 2

You have created a Rule Base for firewall, websydney. Now you are going to create a new policy package with security and address translation rules for a second Gateway.

NO.	ORIGINAL PACKET			TRANSLATED PACKET			INSTALL ON
	SOURCE	DESTINATION	SERVICE	SOURCE	DESTINATION	SERVICE	
1	websydney	* Any	* Any	websydney (Hid	= Original	= Original	fwsydney
2	net_singapore	net_singapore	* Any	= Original	= Original	= Original	All
3	net_singapore	* Any	* Any	net_singapore (H	= Original	= Original	All
4	* Any	websydney	* Any	= Original	websydney	= Original	* Policy Targets
5	* Any	websignapore	TCP HTTP_and_HTTPS	= Original	= Original	TCP http	* Policy Targets

What is TRUE about the new package's NAT rules?

A. Rules 1, 2, 3 will appear in the new package.

B. Only rule 1 will appear in the new package.

C. NAT rules will be empty in the new package.

D. Rules 4 and 5 will appear in the new package.

Correct Answer: A

---

### QUESTION 3

When configuring numbered VPN Tunnel Interfaces (VTIs) in a clustered environment, what issues need to be considered?

- 1) Each member must have a unique source IP address.
- 2) Every interface on each member requires a unique IP address.
- 3) All VTI's going to the same remote peer must have the same name.
- 4) Cluster IP addresses are required.

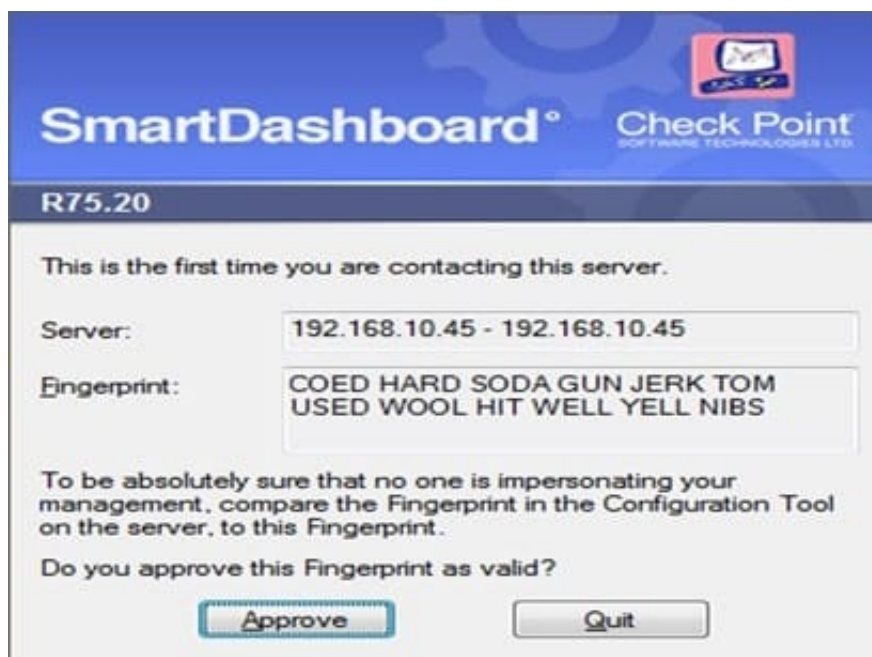
- A. 1, 2, and 4
- B. 2 and 3
- C. 1, 2, 3 and 4
- D. 1, 3, and 4

Correct Answer: C

---

### QUESTION 4

How could you compare the Fingerprint shown to the Fingerprint on the server? Exhibit:



- A. Run cpconfig, select the Certificate\\'s Fingerprint option and view the fingerprint
- B. Run cpconfig, select the GUI Clients option and view the fingerprint
- C. Run cpconfig, select the Certificate Authority option and view the fingerprint
- D. Run sysconfig, select the Server Fingerprint option and view the fingerprint

Correct Answer: A

---

### QUESTION 5

Your organization\\'s disaster recovery plan needs an update to the backup and restore section to reap the new distributed R77 installation benefits. Your plan must meet the following required and desired objectives:

Required Objective: The Security Policy repository must be backed up no less frequently than every 24 hours.

Desired Objective: The R77 components that enforce the Security Policies should be backed up at least once a week.

Desired Objective: Back up R77 logs at least once a week.

Your disaster recovery plan is as follows:

-Use the cron utility to run the command upgrade\_export each night on the Security Management Servers.

-

Configure the organization\\'s routine back up software to back up the files created by the command upgrade\_export.

-

Configure the GAIa back up utility to back up the Security Gateways every Saturday night.

-Use the cron utility to run the command upgrade\_export each Saturday night on the log servers.

-

Configure an automatic, nightly logswitch.

-

Configure the organization\\'s routine back up software to back up the switched logs every night. Upon evaluation, your plan:

A.

Meets the required objective and only one desired objective.

B.

Meets the required objective but does not meet either desired objective.

C.

Does not meet the required objective.

D.

Meets the required objective and both desired objectives.

Correct Answer: D

---

## QUESTION 6

You want to establish a VPN, using certificates. Your VPN will exchange certificates with an external partner. Which of the following activities should you do first?

A. Exchange exported CA keys and use them to create a new server object to represent your partner's Certificate Authority (CA).

B. Create a new logical-server object to represent your partner's CA.

C. Manually import your partner's Access Control List.

D. Manually import your partner's Certificate Revocation List.

Correct Answer: A

---

## QUESTION 7

Fill in the blank. To verify the SecureXL status, you would enter command \_\_\_\_\_ .

A. fwaccel stat

Correct Answer: A

---

## QUESTION 8

Type the command and syntax you would use to verify that your Check Point cluster is functioning correctly.

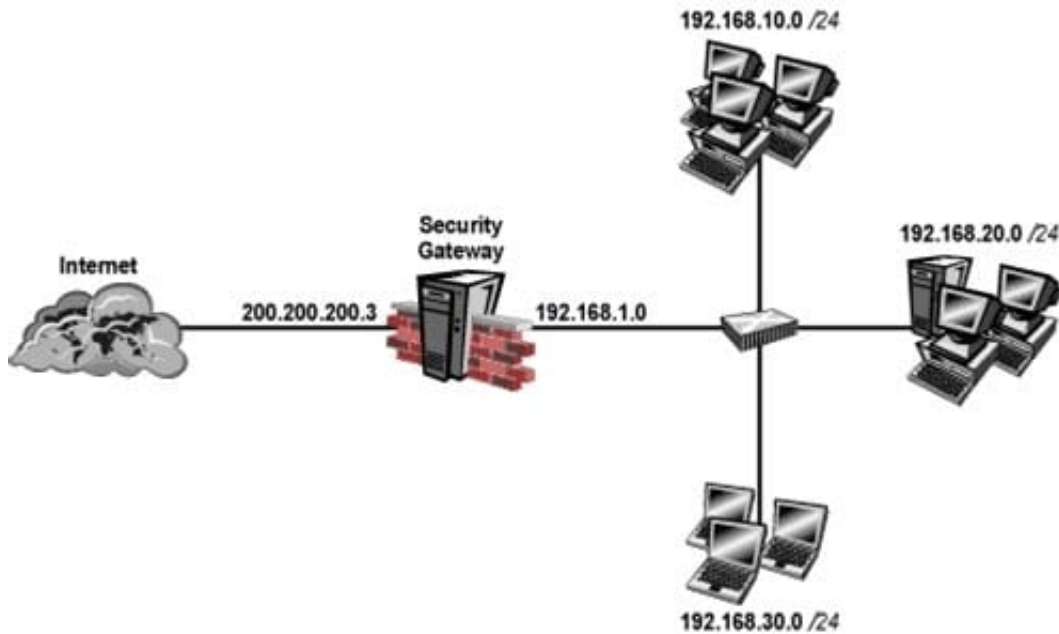
A. cphaprob state

Correct Answer: A

---

## QUESTION 9

Your perimeter Security Gateway's external IP is 200.200.200.3. Your network diagram shows:



Required: Allow only network 192.168.10.0 and 192.168.20.0 to go out to the Internet, using 200.200.200.5.

The local network 192.168.1.0/24 needs to use 200.200.200.3 to go out to the Internet.

Assuming you enable all the settings in the NAT page of Global Properties, how could you achieve these requirements?

- A. Create network objects for 192.168.10.0/24 and 192.168.20.0/24. Enable Hide NAT on both network objects, using 200.200.200.5 as hiding IP address. Add an ARP entry for 200.200.200.3 for the MAC address of 200.200.200.5.
- B. Create an Address Range object, starting from 192.168.10.1 to 192.168.20.254. Enable Hide NAT on the NAT page of the address range object. Enter Hiding IP address 200.200.200.5. Add an ARP entry for 200.200.200.5 for the MAC address of 200.200.200.3.
- C. Create a network object 192.168.0.0/16. Enable Hide NAT on the NAT page. Enter 200.200.200.5 as the hiding IP address. Add an ARP entry for 200.200.200.5 for the MAC address of 200.200.200.3.
- D. Create two network objects: 192.168.10.0/24 and 192.168.20.0/24. Add the two network objects to a group object. Create a manual NAT rule like the following: Original source - group object; Destination any; Service - any; Translated source - 200.200.200.5; Destination - original; Service - original.

Correct Answer: B

## QUESTION 10

The process \_\_\_\_\_ is responsible for Policy compilation.

- A. FWM
- B. Fwcmp
- C. CPLMD

D. CPD

Correct Answer: A

---

#### QUESTION 11

From the following output of cphaprob state, which Cluster XL mode is this?



Number	Unique IP Address	Assigned Load	State
1 <local>	192.168.1.1	30%	active
2	192.168.1.2	70%	active

A. New mode

B. Multicast mode

C. Legacy mode

D. Unicast mode

Correct Answer: D

---

#### QUESTION 12

What gives administrators more flexibility when configuring Captive Portal instead of LDAP query for Identity Awareness authentication?

A. Captive Portal is more secure than standard LDAP

B. Nothing, LDAP query is required when configuring Captive Portal

C. Captive Portal works with both configured users and guests

D. Captive Portal is more transparent to the user

Correct Answer: C

---

#### QUESTION 13

What happens if the identity of a user is known?

A. If the user credentials do not match an Access Role, the traffic is automatically dropped.

B. If the user credentials do not match an Access Role, the system displays a sandbox.

C. If the user credentials do not match an Access Role, the gateway moves onto the next rule.

D. If the user credentials do not match an Access Role, the system displays the Captive Portal.

Correct Answer: C

---

## QUESTION 14

Jon is explaining how the inspection module works to a colleague. If a new connection passes through the inspection module and the packet matches the rule, what is the next step in the process?

- A. Verify if the packet should be moved through the TCP/IP stack.
- B. Verify if any logging or alerts are defined.
- C. Verify if the packet should be rejected.
- D. Verify if another rule exists.

Correct Answer: B

---

## QUESTION 15

Which of the following is NOT a feature of Cluster XL?

- A. Enhanced throughput in all Cluster XL modes (2 gateway cluster compared with 1 gateway)
- B. Transparent failover in case of device failures
- C. Zero downtime for mission-critical environments with State Synchronization
- D. Transparent upgrades

Correct Answer: C

[156-915.77 PDF Dumps](#)

[156-915.77 VCE Dumps](#)

[156-915.77 Study Guide](#)