

## 010-151<sup>Q&As</sup>

Supporting Cisco Data Center System Devices

### Pass Cisco 010-151 Exam with 100% Guarantee

Free Download Real Questions & Answers **PDF** and **VCE** file from:

<https://www.lead4pass.com/010-151.html>

100% Passing Guarantee  
100% Money Back Assurance

Following Questions and Answers are all new published by Cisco  
Official Exam Center

-  **Instant Download** After Purchase
-  **100% Money Back** Guarantee
-  **365 Days** Free Update
-  **800,000+** Satisfied Customers



## QUESTION 1

What is the name of the process to automatically upgrade a new Fabric Interconnect when it is connected to the functioning Fabric Interconnect?

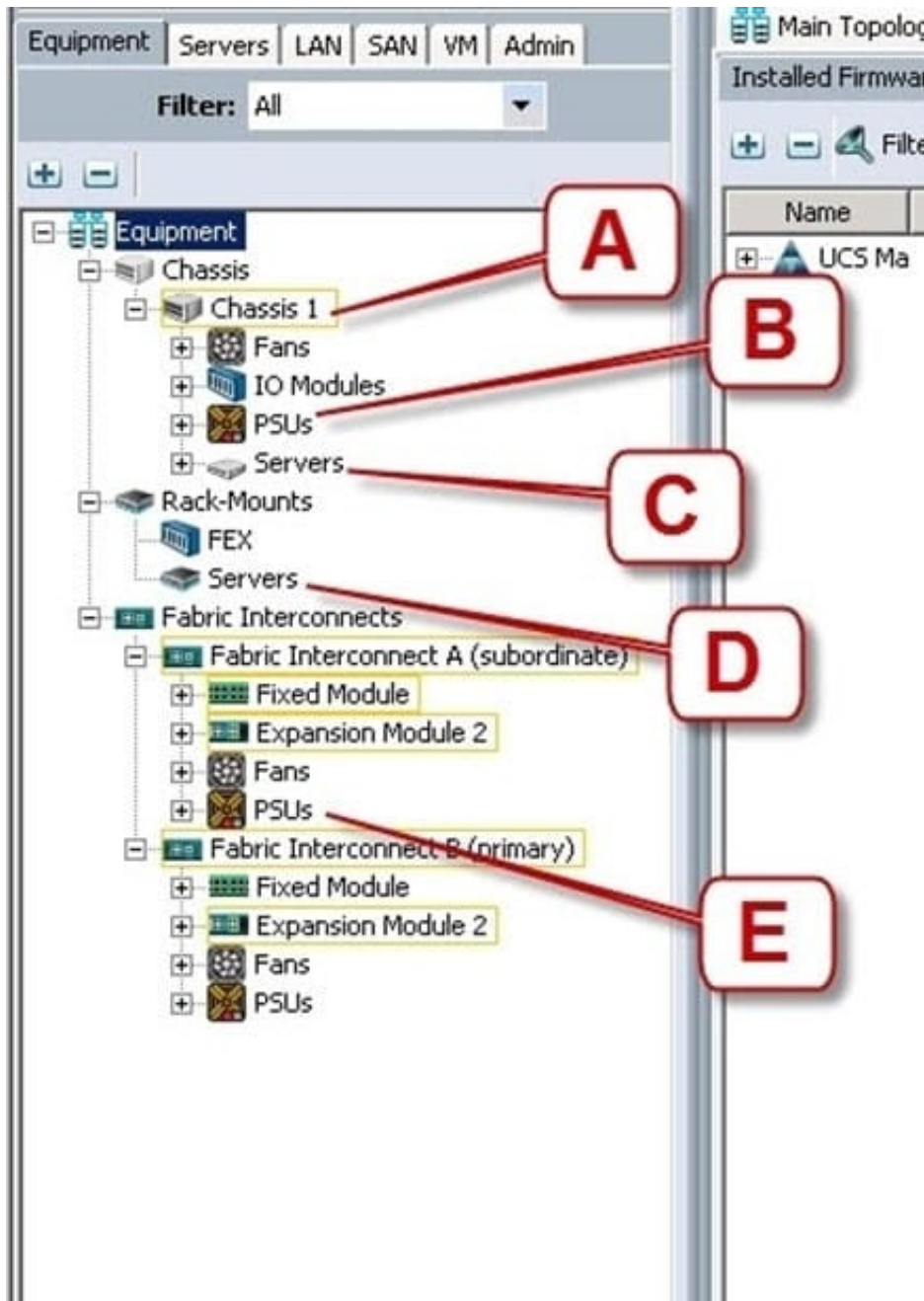
- A. Firmware Policy Process
- B. Auto-Negotiate Process
- C. Auto-Sync Process
- D. Firmware Update Process

Correct Answer: C

---

## QUESTION 2

Refer to the exhibit.



Where is the best place to see the power supply status of the blade server enclosure?

- A. A - Chassis 1
- B. B - Chassis 1 - PSUs
- C. C - Chassis1 - Servers
- D. D - Rack-Mounts - Servers
- E. E - Fabric Interconnects A - PSUs

Correct Answer: B

**QUESTION 3**

Which two blade servers support GPUs? (Choose two.)

- A. UCS B260 M4
- B. UCS B200 M4
- C. UCS B420 M4
- D. UCS B480 M5
- E. UCS B200 M5

Correct Answer: DE

Reference: <https://www.cisco.com/c/en/us/products/servers-unified-computing/ucs-b-series-blade-servers/index.html#~models>

---

**QUESTION 4**

Which statement about RAID is true?

- A. RAID is a scheme used to logically combine several independent disks to form an array or group of drives.
- B. RAID provides data redundancy with either odd parity or even parity.
- C. RAID drive group appears to the host computer as multiple physical storage units.
- D. RAID parity information can be stored across multiple RAID levels.
- E. RAID stores data in the array with data striping, encryption, and parity to organize the data among the disks.

Correct Answer: A

---

**QUESTION 5**

Which two commands display the version of Cisco NX-OS code that the device is currently running on? (Choose two.)

- A. show version
- B. show module
- C. show interface
- D. show boot
- E. show license

Correct Answer: AB

---

**QUESTION 6**

DRAG DROP

Drag the cable or connector on the left to the correct interface on the right.

Select and Place:

Drag the cable or connector on the left to the correct interface on the right.	
KVM dongle	Fabric Interconnect to Fabric Extender
straight-through Ethernet cable	console port
mini USB cable	MDS
Twinax cable	C-Series Rack Server
Fiber Channel SFP	from laptop to Management Port
rolled RJ-45 cable	
SAS cable	

Correct Answer:

Drag the cable or connector on the left to the correct interface on the right.	
	Twinax cable
	rolled RJ-45 cable
mini USB cable	Fiber Channel SFP
	KVM dongle
	straight-through Ethernet cable
SAS cable	

**QUESTION 7**

Which command syntax is correct to reset the admin password when the switch is in the kickstart prompt? switch(boot) #"

- A. exec -> admin-password
- B. connect local-mgmt -> admin-password

C. configure terminal -> admin-password

D. connect nxos -> admin-password

E. admin-password

Correct Answer: C

---

## QUESTION 8

Which three statements about powering down a Cisco UCS C-Series Rack-Mount Server to perform maintenance or replacement are true? (Choose three.)

A. Standby power mode: Power is supplied only to the service processor and the cooling fans, and it is safe to power off the server from this mode.

B. Power status LED. Green indicates that the server is in main power mode and can be safely powered off.

C. Graceful shutdown: Press and release the power button. The operating system performs a graceful shutdown, and the server goes to standby mode, which is indicated by an amber power status LED.

D. Disconnect the power cords from the power supplies in your server to completely power off the server.

E. Only an emergency shutdown can be performed using the power button on the server front panel.

F. The Cisco UCS C-Series Rack-Mount Server has only one power mode.

Correct Answer: ACD

---

## QUESTION 9

Which two statements about PCIe are true? (Choose two.)

A. The PCIe link is built around dedicated unidirectional couples of serial, point-to-point connections known as lanes.

B. You can install a PCI Express x8 adapter into an x4 slot.

C. The PCIe standard is a bus-based system in which all the devices share the same bidirectional, 32-bit or 64-bit, parallel signal path.

D. The PCIe 1.0 standard doubles the transfer rate compared to PCIe 2.0.

E. A link that is composed of four lanes is called an x4 link.

Correct Answer: AE

---

## QUESTION 10

What does the system status LED look like when an over temperature or major alarm occurs on the Cisco UCS 6120XP Fabric Interconnect?

- A. Amber
- B. Red
- C. Blinking amber
- D. Blinking red

Correct Answer: C

---

## QUESTION 11

In the Cisco UCS S3260 Storage Server which two of the below ports are available on a System I/O Controller? (Choose two.)

- A. Dedicated Management port
- B. PCIe ports
- C. KVM Console port
- D. QSFP port
- E. Ethernet LOM port

Correct Answer: BD

---

## QUESTION 12

How do you find the serial number of a Cisco UCS 5108 Blade Server chassis?

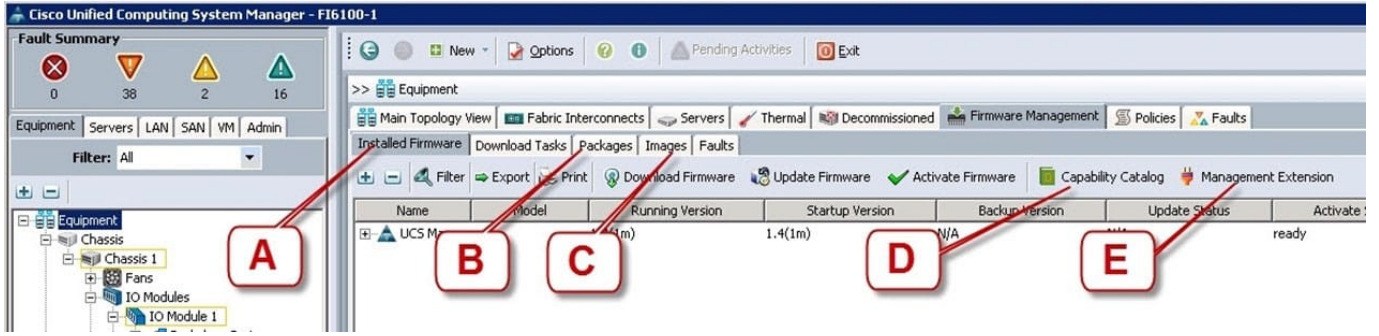
- A. Use the Cisco UCS Admin.
- B. Use the Cisco UCS Application.
- C. Use the Cisco UCS Assistant.
- D. Use the Cisco UCS Manager.

Correct Answer: D

---

## QUESTION 13

Refer to the exhibit.



Where is the best place to find the B200 BIOS version used in a specific Cisco UCS Manager version?

- A. A - Installed Firmware
- B. B - Packages
- C. C - Images
- D. D - Capability Catalog
- E. E - Management Extension

Correct Answer: B

**QUESTION 14**

With which data center type can a company lease the equipment and infrastructure?

- A. Managed services data center
- B. Colocation data center
- C. Green technology data center
- D. Enterprise data center

Correct Answer: A

**QUESTION 15**

Which two Cisco Nexus switches provide the foundation of the Cisco Application Centric Infrastructure? (Choose two.)

- A. Cisco Nexus 7718 switch
- B. Cisco Nexus 9508 switch
- C. Cisco Nexus 7710 switch
- D. Cisco Nexus 93128TX switch



E. Cisco Nexus 6004 switch

Correct Answer: BD

[Latest 010-151 Dumps](#)

[010-151 PDF Dumps](#)

[010-151 Exam Questions](#)