

VCS-319^{Q&As}

Administration of Veritas Enterprise Vault 11.x

Pass Veritas VCS-319 Exam with 100% Guarantee

Free Download Real Questions & Answers **PDF** and **VCE** file from:

<https://www.leads4pass.com/vcs-319.html>

100% Passing Guarantee
100% Money Back Assurance

Following Questions and Answers are all new published by Veritas
Official Exam Center

-  **Instant Download** After Purchase
-  **100% Money Back** Guarantee
-  **365 Days** Free Update
-  **800,000+** Satisfied Customers



QUESTION 1

A Symantec Enterprise Vault 11.x for Exchange (EV) administrator is performing an EV disaster recovery. The administrator has successfully restored the EV Directory database.

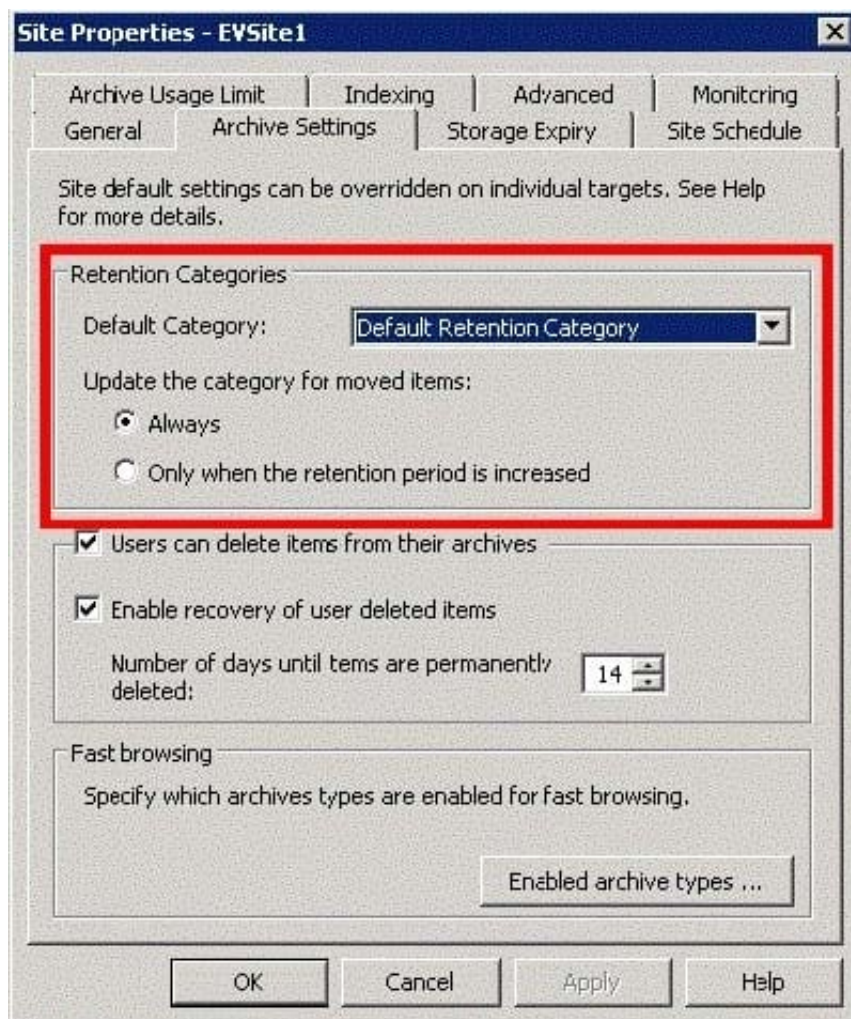
Which additional components must be recovered to the same point in time to ensure a successful recovery?

- A. Vault Store database, Server Cache location, Indexes, and Vault Store Partition(s)
- B. Fingerprint database, Vault Store database(s), Indexes, and Vault Store Partition(s)
- C. Fingerprint database, Vault Store partition table, Vault Store database(s), and Indexes
- D. Fingerprint database, Exchange Transaction Logs, Vault Store Partition(s), and Indexes

Correct Answer: B

QUESTION 2

Refer to the Exhibit.



What does the Site Setting shown in the red box apply to?

- A. pending shortcut items B. mailbox shortcuts
- C. archives moved using the Move Archive wizard
- D. Storage Queue items

Correct Answer: B

QUESTION 3

What must be run to initiate a failover in a building blocks environment?

- A. Global Cluster Option
- B. Getting Started Wizard
- C. Convert to Cluster Wizard
- D. Update Service Locations

Correct Answer: C

QUESTION 4

Which set of logs would best help an administrator troubleshoot Outlook client connectivity issues with the Enterprise Vault server?

- A. the Enterprise Vault Client log and a dtrace log output of the StorageCrawler process on the Enterprise Vault server
- B. the latest Internet Information Services (IIS) log on the Enterprise Vault server and the Enterprise Vault Client log
- C. the latest Internet Information Services (IIS) log on the Enterprise Vault server and the Symantec Enterprise Vault Converters event log on the Enterprise Vault server
- D. the dtrace log output of the StorageFileWatch process and the VaultCachePH.log file from the client computer

Correct Answer: B

QUESTION 5

An administrator needs to remove an Index Server from an Index Server Group and place it in another group.

When can this process be completed?

- A. during the processing time of the Index Administration task
- B. before archived items have been indexed
- C. when the Indexing Service is stopped

D. after indexes have been put into Backup mode

Correct Answer: B

[VCS-319 VCE Dumps](#)

[VCS-319 Practice Test](#)

[VCS-319 Exam Questions](#)