

# VCS-276<sup>Q&As</sup>

Administration of Veritas NetBackup 8.0

## Pass Veritas VCS-276 Exam with 100% Guarantee

Free Download Real Questions & Answers **PDF** and **VCE** file from:

<https://www.leads4pass.com/vcs-276.html>

100% Passing Guarantee  
100% Money Back Assurance

Following Questions and Answers are all new published by Veritas  
Official Exam Center

-  **Instant Download** After Purchase
-  **100% Money Back** Guarantee
-  **365 Days** Free Update
-  **800,000+** Satisfied Customers



**QUESTION 1**

How can an administrator determine the storage and database paths for a Media Server Deduplication Pool?

- A. run the Configure Disk Storage Server wizard for the MSDP
- B. view Storage Unit >View Properties for the MSDP storage unit
- C. view Disk Pool> Disk volumes for the MSDP disk pool
- D. view Storage Server > Properties for the storage server

Correct Answer: C

---

**QUESTION 2**

NetBackup has frozen some of the tapes added to the robot.

Which log must be enabled to determine why the tapes were frozen?

- A. Itid
- B. robots
- C. bptm
- D. vmd

Correct Answer: C

---

**QUESTION 3**

Which volume pool must be manually created in NetBackup?

- A. None pool
- B. DataStore pool
- C. Scratch pool
- D. CatalogBackup pool

Correct Answer: C

---

**QUESTION 4**

Storage lifecycle policy SLP1 is used to perform a backup and duplication. The backup is always a small, 100MB backup. The master server host properties for SLP Parameters are set to the default values.

How can the administrator ensure the duplications run as soon as possible after the backup completes?

- A. reduce the Job submission interval setting to 0
- B. reduce the Minimum size per duplication job setting to 50 MB
- C. right-click SLP1 and select Manual Relocation to Final Destination
- D. increase the Priority for secondary operations in the SLP

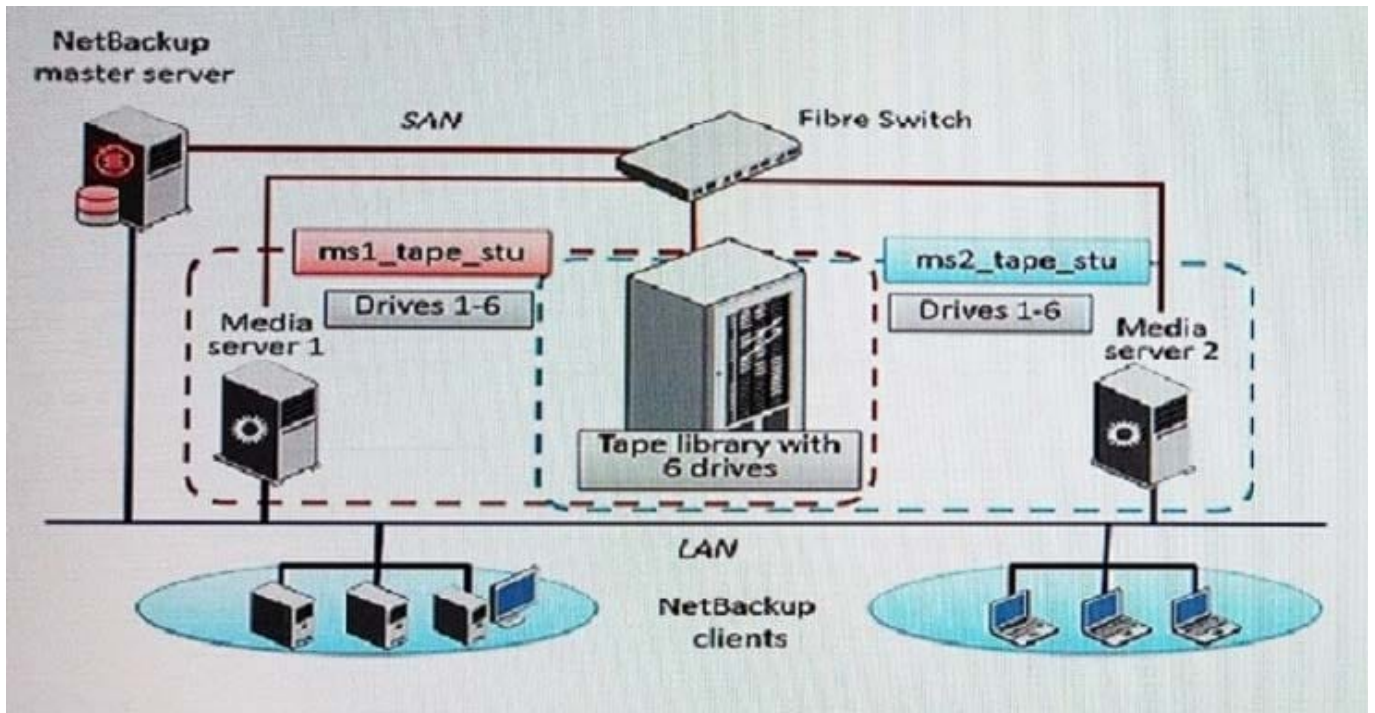
Correct Answer: D

**QUESTION 5**

Refer to the exhibit.

Two media servers, sharing a library with 6 tape drives, exist in the NetBackup environment displayed in the exhibit. Both weekly full and daily differential incremental backups need to run for the clients and each schedule has a different retention period. Because of network topology, some clients back up to Media server 1 and some back up to Media server 2. The environment suffers from multiple status 96 failures during the backup window.

How can the administrator minimize the number of failures?



- A. increase the Media unmount delay
- B. configure media multiplexing
- C. enable backups to span tape media
- D. enable media sharing

Correct Answer: D

[VCS-276 PDF Dumps](#)

[VCS-276 VCE Dumps](#)

[VCS-276 Study Guide](#)