

VCPC550^{Q&As}

VMware Certified Professional – Cloud (VCP-Cloud) Exam

Pass VMware VCPC550 Exam with 100% Guarantee

Free Download Real Questions & Answers **PDF** and **VCE** file from:

<https://www.leads4pass.com/vcpc550.html>

100% Passing Guarantee
100% Money Back Assurance

Following Questions and Answers are all new published by VMware
Official Exam Center

-  **Instant Download** After Purchase
-  **100% Money Back** Guarantee
-  **365 Days** Free Update
-  **800,000+** Satisfied Customers



QUESTION 1

To comply with security requirements, an administrator with a vCenter Server Appliance needs to force logoff of the vSphere web client after 10 minutes of inactivity. What should the administrator do to meet the requirement?

- A. Edit: `/var/lib/vmware/vsphere-client/webclient.properties`, modify `session.timeout=10`
- B. Edit: `/opt/vmware/vsphere-client/webclient.properties`, modify `session.timeout=600`
- C. Edit: `/var/lib/vmware/vsphere-client/webclient.properties`, modify `session.timeout=600`
- D. Edit: `/opt/vmware/vsphere-client/webclient.properties`, modify `session.timeout=10`

Correct Answer: A

QUESTION 2

An administrator determines that when a host residing in a High Availability (HA) cluster fails, the virtual machines fail to restart on a remaining host, or will only restart after a long delay.

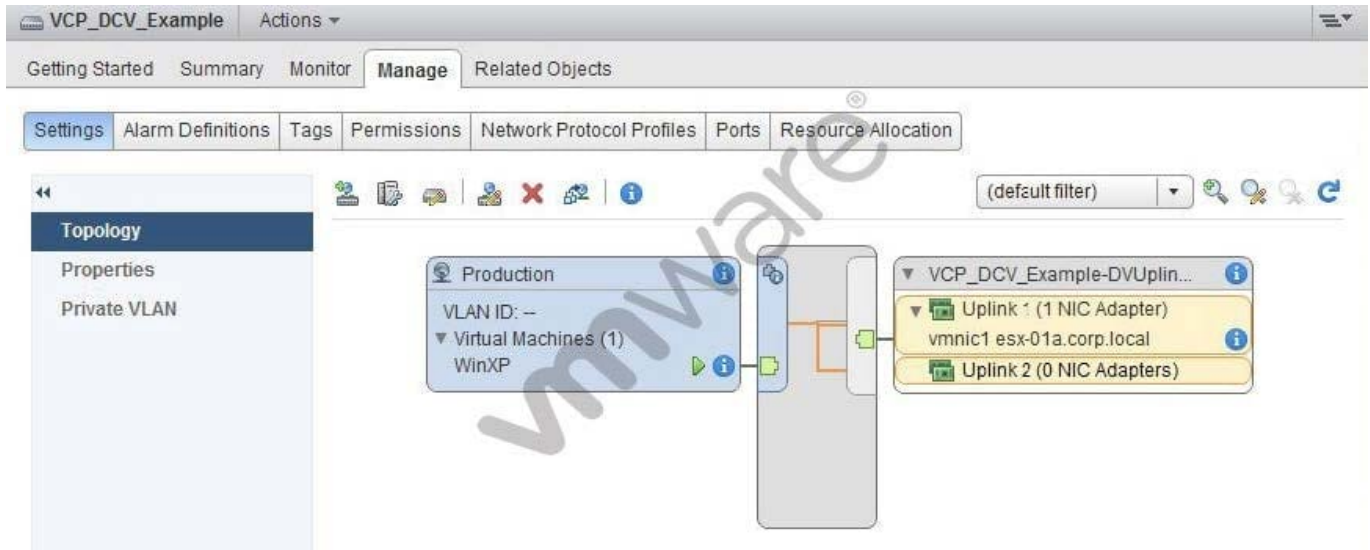
Which two conditions would account for this behavior? (Choose two.)

- A. The virtual machines were not protected by vSphere HA at the time the failure occurred.
- B. Distributed Resource Scheduler was not enabled at the time the failure occurred.
- C. There is insufficient spare capacity on hosts with which the virtual machines are compatible.
- D. The virtual machines contain physical Raw Device Mappings.

Correct Answer: AC

QUESTION 3

-- Exhibit --- Exhibit -



The WinXP virtual machine user reports intermittent connectivity to the corporate network. The exhibit shows the current configuration.

The configuration is as follows:

This virtual machine runs in a DRS/HA cluster of two hosts.

The VCP_DCV_Example vSphere Distributed Switch was recently created.

The WinXP virtual machine was recently migrated from another vSphere Distributed Switch.

The WinXP virtual machine was able to connect prior to migration to this switch.

No changes to the VCP_DCV_Example switch have been made since creation.

Which step should the administrator take to resolve the WinXP virtual machine's intermittent connectivity to the corporate network?

- A. Add the ESXi host to the switch where the virtual machine is currently running
- B. Disable Port Blocking on the VCP_DCV_Example switch
- C. Disable Port Blocking on the Production port group
- D. Enable Network I/O Control on the switch to better balance I/O

Correct Answer: A

QUESTION 4

An administrator determines that network traffic from the Network Pool is being fragmented. After the administrator changes the MTU to 1600 on the physical equipment, traffic is no longer fragmented. Which Network Pool is being used?

- A. Isolated Organization Network
- B. VLAN-Backed

C. vSphere Port Group-Backed

D. VXLAN-Backed

Correct Answer: D

QUESTION 5

An administrator needs to create a Network Pool that works with a Layer 3 multicast-enabled network. Which Network Pool should the administrator create?

A. VXLAN

B. vSphere Port Group-Backed

C. VLAN-Backed

D. vCloud Network Isolation-Backed

Correct Answer: A

[VCPC550 Practice Test](#)

[VCPC550 Study Guide](#)

[VCPC550 Exam Questions](#)