

VCP-510^{Q&As}

VMware Certified Professional on VSphere 5

Pass VMware VCP-510 Exam with 100% Guarantee

Free Download Real Questions & Answers **PDF** and **VCE** file from:

<https://www.leads4pass.com/vcp-510.html>

100% Passing Guarantee
100% Money Back Assurance

Following Questions and Answers are all new published by VMware
Official Exam Center

-  **Instant Download** After Purchase
-  **100% Money Back** Guarantee
-  **365 Days** Free Update
-  **800,000+** Satisfied Customers



QUESTION 1

Which three files are valid virtual machine files that might be identified when examining a folder that contains a virtual machine template on a VMFS datastore? (Choose three.)

- A. RDM map file (-rdm.vmdk)
- B. BIOS settings file (.bios)
- C. Template file (.vmtx)
- D. Lock file (.lck)
- E. Suspended state file (.vmsn)

Correct Answer: ACE

QUESTION 2

An administrator finds that vMotion and Storage vMotion operations do not succeed on a virtual machine. The virtual machine has been configured with N_Port ID Virtualization. The virtual machine has two data RDMs, one using a RAID5 LUN and one using a RAID0+1 LUN. The mapping file for the RAID5 LUN was created on the same datastore as the virtual machine, and the mapping file for the RAID0+1 LUN was placed in a datastore used for production data virtual disks. Which two statements are true about this configuration? (Choose two.)

- A. Storage vMotion cannot be used unless both mapping files are placed on the same datastore.
- B. vMotion cannot be used unless both mapping files are placed on the same datastore.
- C. vMotion cannot be used with RDMs.
- D. Storage vMotion cannot be used with NPIV.

Correct Answer: BD

QUESTION 3

It appears that a single vCPU virtual machine in a resource pool called Production is having performance problems because it does not have enough CPU resources available. Which two methods can be used to improve performance and reduce CPU contention of this virtual machine while maintaining compatibility with DRS? (Choose two.)

- A. Configure a CPU reservation for this virtual machine.
- B. Increase the CPU shares for the resource pool.
- C. Increase the CPU shares for the virtual machine.
- D. Increase the share priority setting for the Production resource pool.

Correct Answer: AC

QUESTION 4

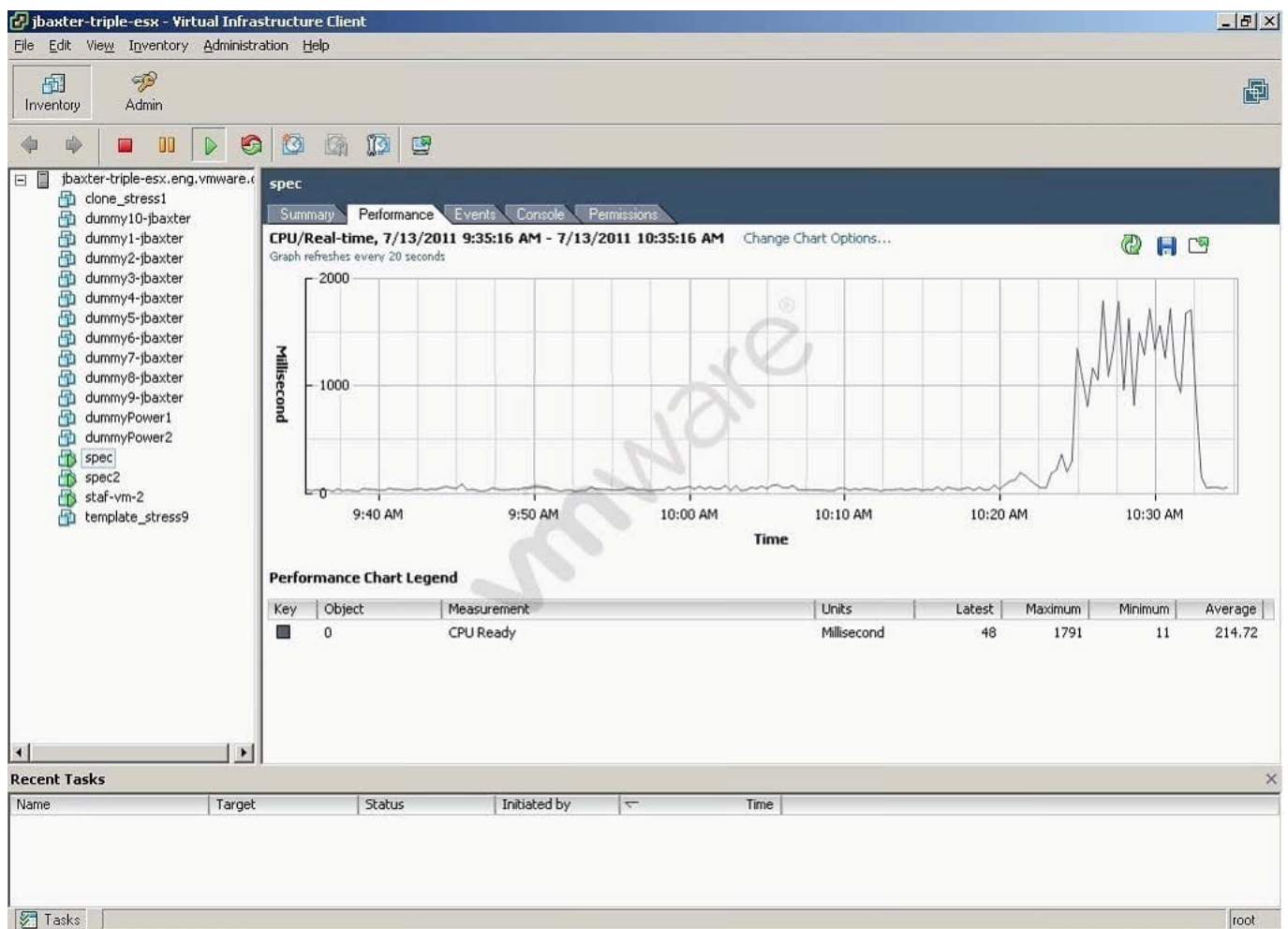
What are two considerations when using resource pools in a vSphere cluster? (Choose two.)

- A. Default shares are equal for all sibling resource pools, regardless of virtual machines or child pools
- B. By default, Reservations can be exceeded
- C. vMotion must be setup prior to creating Resource Pools
- D. DRS rules cannot violate Resource Pool membership

Correct Answer: AB

QUESTION 5

Click the Exhibit button. Which change will eliminate the symptom in the performance chart shown in the exhibit?



- A. Set CPU shares to High
- B. Set CPU affinity for the virtual machine

C. Migrate the VM to a host that is less utilized

D. Add a CPU to the virtual machine

Correct Answer: A

[VCP-510 PDF Dumps](#)

[VCP-510 VCE Dumps](#)

[VCP-510 Study Guide](#)