

ST0-134^{Q&As}

Symantec EndPoint Protection 12.1 Technical Assessment

Pass Symantec ST0-134 Exam with 100% Guarantee

Free Download Real Questions & Answers **PDF** and **VCE** file from:

<https://www.leads4pass.com/st0-134.html>

100% Passing Guarantee
100% Money Back Assurance

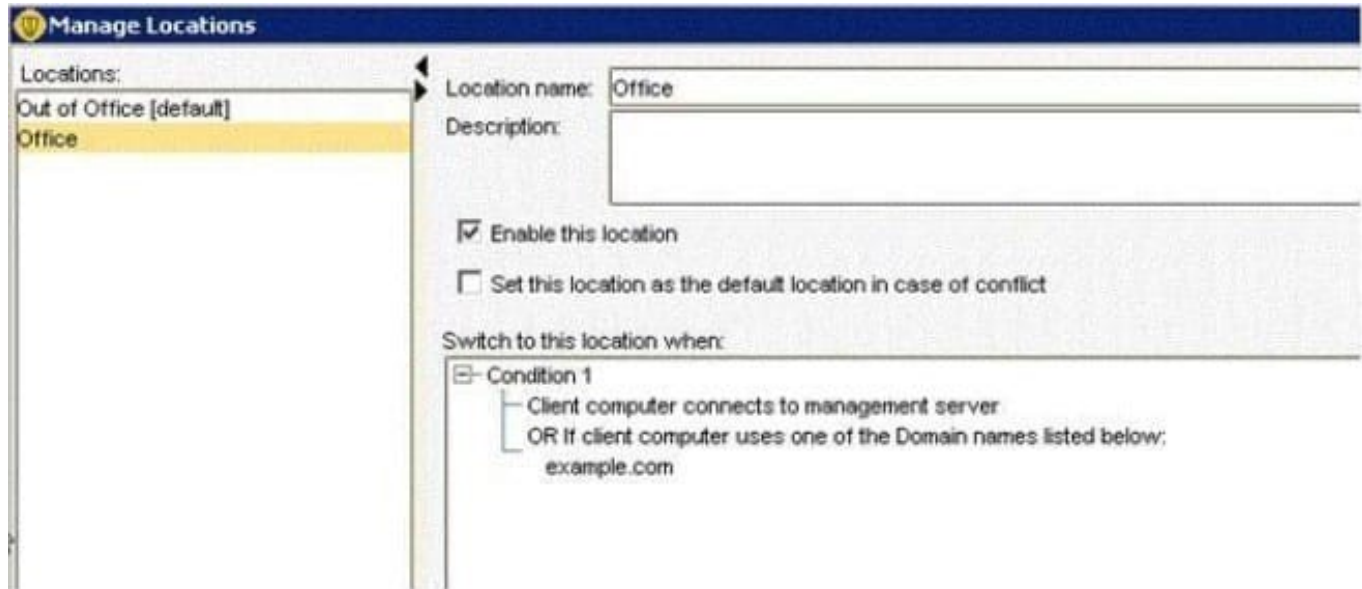
Following Questions and Answers are all new published by Symantec
Official Exam Center

-  **Instant Download** After Purchase
-  **100% Money Back** Guarantee
-  **365 Days** Free Update
-  **800,000+** Satisfied Customers



QUESTION 1

Refer to the exhibit.



In the use case displayed in the exhibit, why is the administrator unable to save the changes to this file?

- A. Application Control is preventing Notepad from accessing the host file.
- B. SONAR is set to block host file modifications.
- C. Tamper Protection is enabled.
- D. The Auto-Protect feature detected a malicious activity.

Correct Answer: B

QUESTION 2

An administrator is using the SylinkDrop tool to update a Symantec Endpoint Protection client install on a system. The client fails to migrate to the new Symantec Endpoint Protection Manager (SEPM), which is defined correctly in the Sylink.xml file that was exported from the SEPM.? Which settings must be provided with SylinkDrop to ensure the successful migration to a new Symantec Endpoint Protection environment with additional Group Level Security Settings?

- A. -s "silent"
- B. -t "Tamper Protect"
- C. -r "reboot"
- D. -p "password"

Correct Answer: D

QUESTION 3

An administrator gets a browser certificate warning when accessing the Symantec Endpoint Protection Manager (SEPM) Web console. Where can the administrator obtain a self-signed certificate to prevent this warning from appearing?

- A. SEPM console Licenses section
- B. Symantec Protection Center
- C. SEPM Web Access
- D. Symantec Support

Correct Answer: C

QUESTION 4

A company needs to configure an Application and Device Control policy to block read/write access to all USB removable media on its Symantec Endpoint Protection (SEP) systems. Which tool should an administrator use to format the GUID and device IDs as required by SEP?

- A. CheckSum.exe
- B. DeviceTree.exe
- C. TaskMgr.exe
- D. DevViewer.exe

Correct Answer: D

QUESTION 5

A Symantec Endpoint Protection 12.1 client is running a user-defined scan when a scheduled, administrator-defined scan is scheduled to launch. What is the effect on the client?

- A. The user-defined scan will be paused in order to launch the administrator-defined scan.
- B. The administrator-defined scan will launch after the user-defined scan completes.
- C. The user-defined scan will be canceled in order to launch the administrator-defined scan.
- D. The administrator-defined scan will be skipped and the user-defined scan will continue.

Correct Answer: B
