

QV_DEVELOPER_01^{Q&As}

QlikView 11 Developer Certification Examination

Pass QlikView QV_DEVELOPER_01 Exam with 100% Guarantee

Free Download Real Questions & Answers **PDF** and **VCE** file from:

https://www.leads4pass.com/qv_developer_01.html

100% Passing Guarantee
100% Money Back Assurance

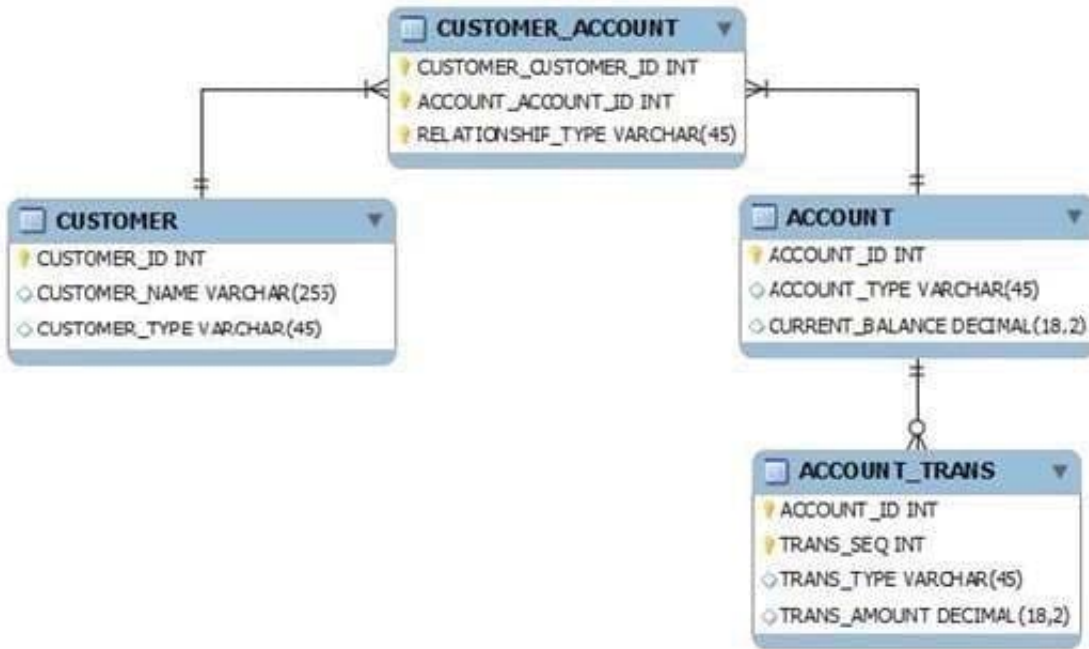
Following Questions and Answers are all new published by QlikView Official Exam Center

-  **Instant Download** After Purchase
-  **100% Money Back** Guarantee
-  **365 Days** Free Update
-  **800,000+** Satisfied Customers



QUESTION 1

Refer to the exhibit to the right.



What is the cardinality of the relationship between CUSTOMER and ACCOUNT?

- A. many-to-many
- B. one-to-many
- C. one-to-none
- D. one-to-one

Correct Answer: A

QUESTION 2

Refer to the exhibit to the right.

Year	Month	Period	Date	SalesPersonID	RegionID	CustomerID	ItemID	SalesAmount
2009	Jan	01	01/05/2009	5	2	8	3	1000
2009	Jan	01	01/11/2009	5	1	4	4	2500
2009	Mar	03	03/04/2009	5	2	4	1	50
2009	Mar	03	03/09/2009	1	1	4	2	250
2009	Apr	04	04/03/2009	4	3	3	3	700
2009	Apr	04	04/12/2009	4	2	2	2	150
2009	May	05	05/15/2009	5	1	5	3	100
2009	Jun	06	06/13/2009	2	4	7	4	5000
2009	Jun	06	06/17/2009	1	4	5	1	50
2009	Aug	08	08/11/2009	4	4	4	4	3500
2009	Aug	08	08/19/2009	3	4	4	4	4500
2009	Sep	09	09/10/2009	5	2	3	3	200
2009	Sep	09	09/25/2009	5	4	3	2	300
2009	Sep	09	09/30/2009	4	2	5	3	1000
2009	Oct	10	10/05/2009	3	4	7	2	200
2009	Oct	10	10/11/2009	3	3	2	4	5000
2009	Oct	10	10/24/2009	2	4	1	4	3500
2009	Oct	10	10/28/2009	5	4	3	2	300
2009	Nov	11	11/28/2009	5	3	7	1	20
2009	Dec	12	12/08/2009	2	1	2	2	350
2010	Jan	01	01/12/2010	3	3	2	2	300
2010	Jan	01	01/15/2010	4	4	5	2	350
2010	Jan	01	01/22/2010	3	4	5	1	100
2010	Feb	02	02/01/2010	5	3	2	4	3000

The sales table displayed in the exhibit represents the entire data set. Given the expression. =sum(Given the expression.=sum({\$} salesAmount)

What is the result with the selections for salesPersonID=1 and RegionID=3?

- A. 0
- B. 3500
- C. 4500
- D. 5000

Correct Answer: A

QUESTION 3

A client has a data set with two tables.

The Customer table has fields CustomerID, AssignedTo, FirstName, and LastName.

The Orders table has fields CustomerID, AssignedTo, Product, and Quantity.

The AssignedTo field holds an employee reference.

Users need to see Customers and Orders by employee.

The employee assigned to the Customer may not be the same as the employee assigned to the Order.

Which technique should be used in the script to meet the requirement?

- A. load the tables leaving the automatic associations
- B. comment out the AssignedTo from the Orders table
- C. comment out the AssignedTo from the Customer table
- D. use Rename Field syntax to alias one of the AssignedTo fields
- E. create a concatenated key of CustomerID and AssignedTo in both tables

Correct Answer: D

QUESTION 4

Which action should a developer perform on a table to reduce required memory and optimize the application?

- A. convert numeric fields into text fields using the Text function
- B. combine multiple fields into one complex field, reducing the number of fields per table
- C. make all numeric fields a fixed length by left padding with leading 0's using the Num function
- D. split out a single complex field into multiple fields reducing the number of distinct values per field

Correct Answer: D

QUESTION 5

A customer has a sales data table and needs a chart to display sales figures by date, including dates without sales. The sales table is sorted by the primary key which is generated based on the type of order and the salesPersonID who generated it.

Which technique should a developer use to achieve this requirement?

- A. a Resident Load and Peek, to determine the minimum and maximum dates and then AutoGenerate to create a master calendar
- B. the today() function, to determine the required date range and use an Inline load to generate the master calendar
- C. Peek, when loading the sales data, to create records within the sales data table for dates with no sales
- D. calculated dimensions in Chart Objects and expressions in List Boxes, to generate the required dates

Correct Answer: A