

QV_DEVELOPER_01^{Q&As}

QlikView 11 Developer Certification Examination

Pass QlikView QV_DEVELOPER_01 Exam with 100% Guarantee

Free Download Real Questions & Answers **PDF** and **VCE** file from:

https://www.leads4pass.com/qv_developer_01.html

100% Passing Guarantee
100% Money Back Assurance

Following Questions and Answers are all new published by QlikView
Official Exam Center

- ⚙ **Instant Download** After Purchase
- ⚙ **100% Money Back** Guarantee
- ⚙ **365 Days** Free Update
- ⚙ **800,000+** Satisfied Customers



QUESTION 1

Refer to the exhibit to the right.

```
1 QUALIFY *;  
2  
3 SalesPerson:  
4 LOAD DepartmentID,  
5     SalesPersonID,  
6     Name;  
7 SQL SELECT DepartmentID,  
8     SalesPersonID,  
9     Name  
10 FROM dbo.SalesPerson;  
11  
12 Left Join  
13 LOAD DepartmentID,  
14     Name;  
15 SQL SELECT DepartmentID,  
16     Name  
17 FROM dbo.Department;|
```

When the script displayed in the exhibit is reloaded, an error message is displayed.

Table not found

Left Join (salesPerson)

LOAD ID

DepartmentID

FROM

[DatasourceA.xlsx]

(ooxml, embeddedlabels, tableissalesPersonDepartment);

What is the likely cause of the error?

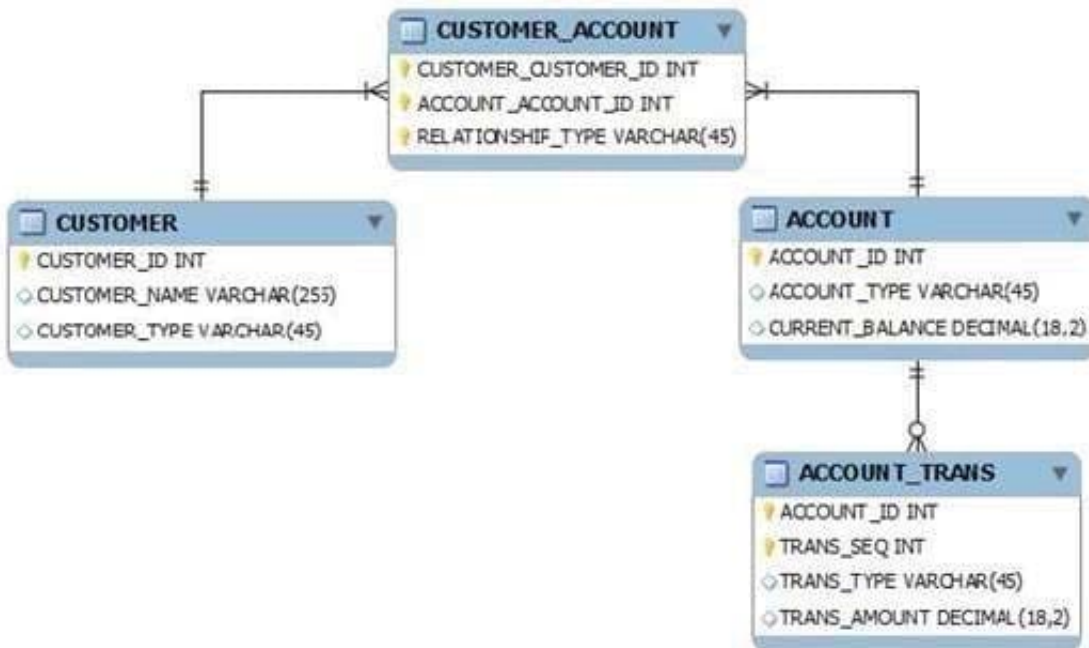
- A. When loaded, the salesPerson table is auto concatenated to Customer and does not exist when referenced.
- B. The Left Join statement fails to correctly bracket the referenced table name, such as Left Join ([salesPerson]).
- C. The Left Join statement fails to correctly quote the referenced table name, such as Left Join (IsalesPerson!).

D. There is an error in the Customer table load and it is not created in memory.

Correct Answer: A

QUESTION 2

Refer to the exhibit to the right.



What is the cardinality of the relationship between CUSTOMER and ACCOUNT?

- A. many-to-many
- B. one-to-many
- C. one-to-none
- D. one-to-one

Correct Answer: A

QUESTION 3

A client has a data set with two tables.

The Customer table has fields CustomerID, AssignedTo, FirstName, and LastName.

The Orders table has fields CustomerID, AssignedTo, Product, and Quantity.

The AssignedTo field holds an employee reference.

Users need to see Customers and Orders by employee.

The employee assigned to the Customer may not be the same as the employee assigned to the Order.

Which technique should be used in the script to meet the requirement?

- A. load the tables leaving the automatic associations
- B. comment out the AssignedTo from the Orders table
- C. comment out the AssignedTo from the Customer table
- D. use Rename Field syntax to alias one of the AssignedTo fields
- E. create a concatenated key of CustomerID and AssignedTo in both tables

Correct Answer: D

QUESTION 4

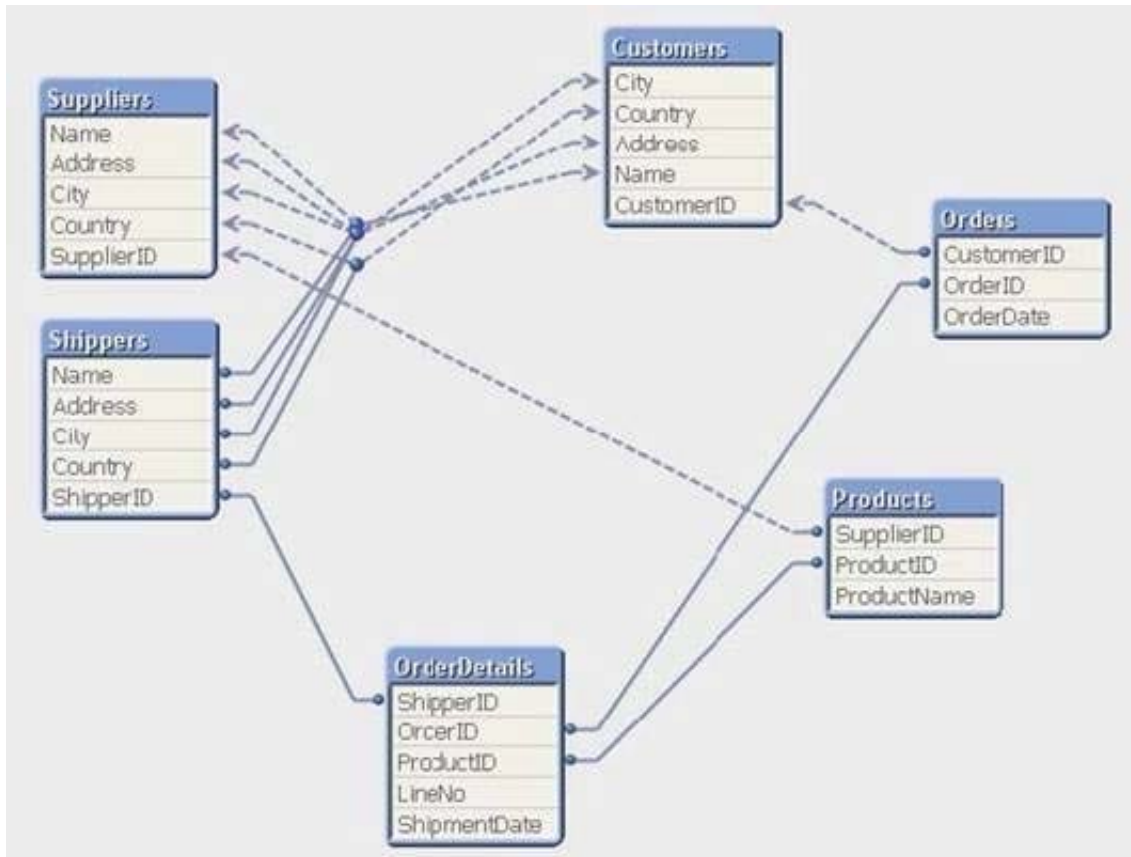
When should a developer create a new tab in the Load script?

- A. when the critical number of 255 lines per tab has been exceeded
- B. when the tab is marked with the `///tab$` statement
- C. when portions of script are logically related
- D. when entering Edit script for the first time

Correct Answer: C

QUESTION 5

A customer has an Actual sales fact table aggregated at the transactional level and a Budgeted sales fact table aggregated at the monthly level. The tables share many of the same dimensional fields.



How can a developer form the data model?

- A. qualify both tables and Unqualify all shared fields
- B. left join the Budgeted sales table onto the fact table using Month as the key
- C. concatenate Load the Budgeted sales table into the Actual sales table loading shared fields as NULL
- D. create a link table containing the dimensional fields then link each fact table using a concatenated key

Correct Answer: D

[QV DEVELOPER_01 Practice Test](#)

[QV DEVELOPER_01 Study Guide](#)

[QV DEVELOPER_01 Exam Questions](#)