

PW0-250^{Q&As}

Certified Wireless Design Professional (CWDP)

Pass CWNP PW0-250 Exam with 100% Guarantee

Free Download Real Questions & Answers **PDF** and **VCE** file from:

<https://www.leads4pass.com/pw0-250.html>

100% Passing Guarantee
100% Money Back Assurance

Following Questions and Answers are all new published by CWNP
Official Exam Center

-  **Instant Download** After Purchase
-  **100% Money Back** Guarantee
-  **365 Days** Free Update
-  **800,000+** Satisfied Customers



QUESTION 1

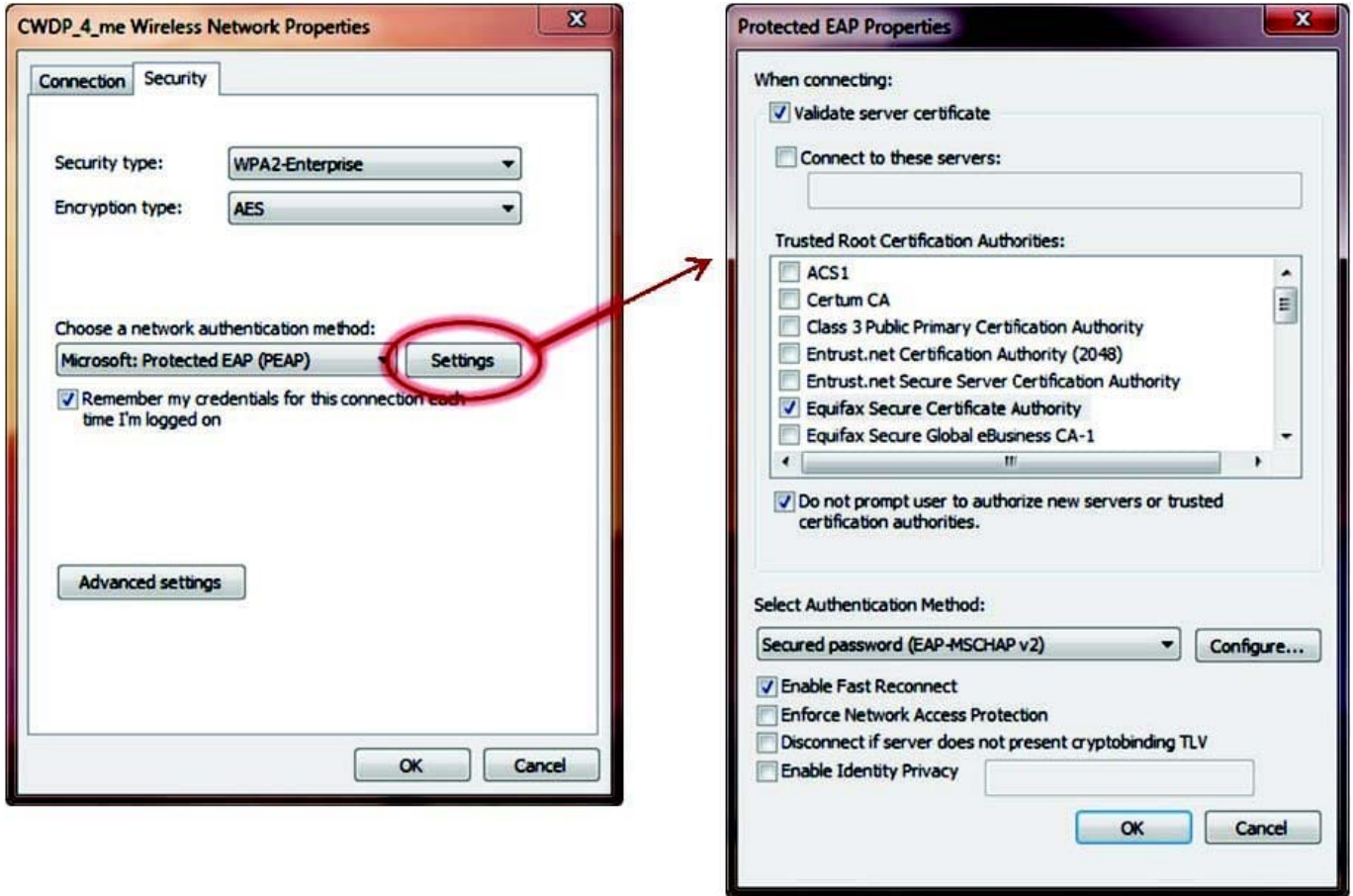
In a large enterprise (5000+ wireless users), by what recommended methods are IP addresses and VLANs assigned to different clients associated to the same AP? (Choose 3)

- A. Each SSID is mapped to a static VLAN assignment
- B. Upstream AAA servers dynamically assign VLANs to each user or group profile
- C. Radio signal metrics (RSSI, SNR, etc.) of WLAN clients are triangulated for location-based VLAN assignment during association
- D. Each BSSID is assigned a unique VLAN to help manage the size of broadcast domains on the wired network
- E. Multiple VLAN pools are designated for an SSID and user IP addresses are selected in a round-robin fashion from the associated pools.
- F. In a centralized data forwarding model, clients automatically receive an IP address on the native VLAN of the AP's Ethernet access port.
- G. The configuration profile of the client supplicant is hard-coded with a VLAN ID.

Correct Answer: ABE

QUESTION 2

According to WLAN security design best practices, what is true of the EAP properties shown in the exhibit?

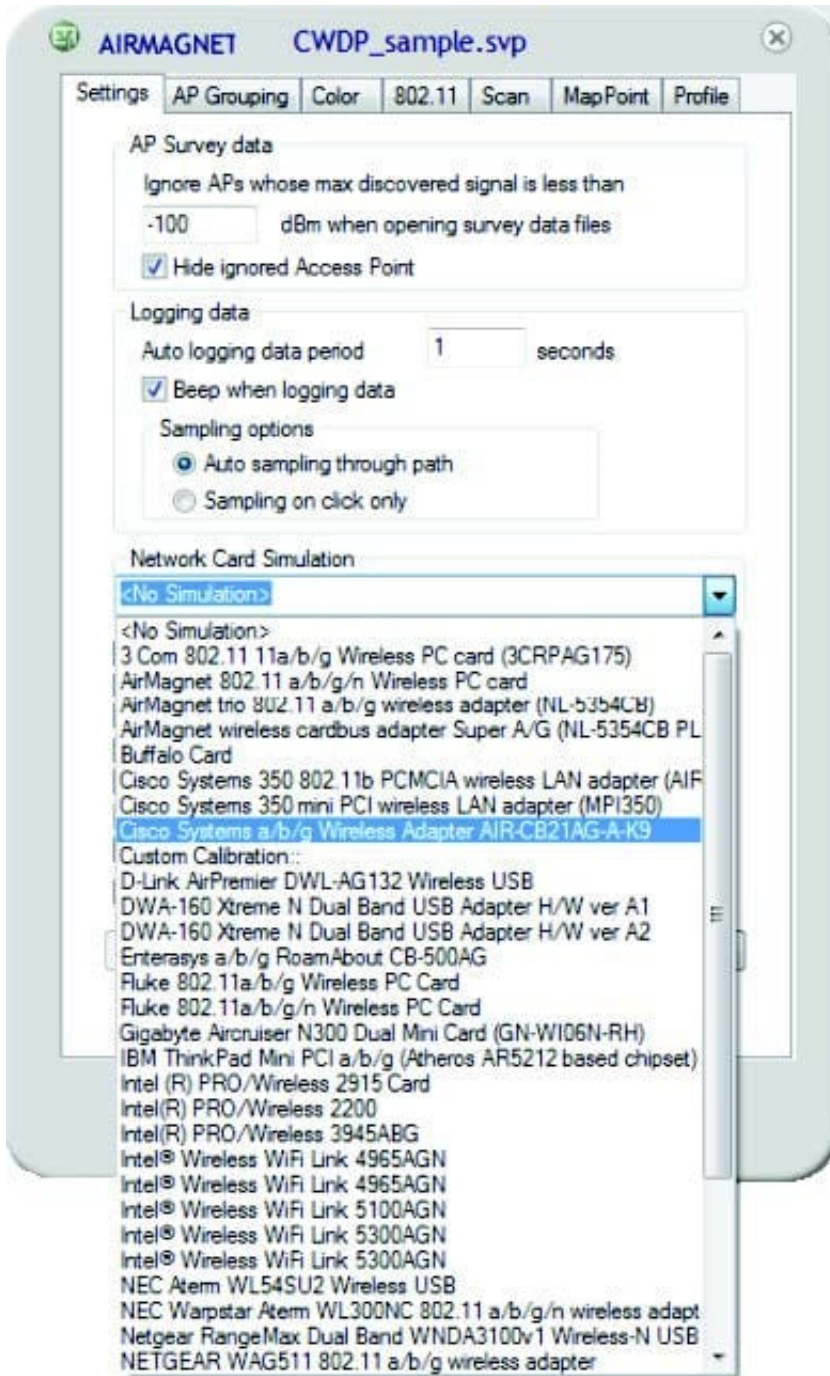


- A. The "Validate server certificate" checkbox should be checked if you purchased a third-party SSL certificate for the AS, but left unchecked if you have a self-signed certificate for the AS.
- B. The "Validate server certificate" checkbox should always be checked to prevent MITM attacks from rogue authentication servers.
- C. The "Trusted Root Certification Authorities" list is provided to identify the certificate that the client should send to the AS for client authentication.
- D. The "Do not prompt user to authorize new servers or trusted certification authorities" box should be checked only for administrative users.
- E. The "Enable Identity Privacy" checkbox and anonymous name field are only useful for networks supporting EAP-LEAP.

Correct Answer: B

QUESTION 3

While configuring your site survey software for an upcoming manual survey project, you notice the configuration option for "Network Card Simulation" as shown in the exhibit.



- A. This setting allows the site survey software to convert the AP's measured downlink RF data into a simulated data set as if the same data were transmitted by a specific client station. It is useful for determining uplink client performance when clients are located far from APs as well as projecting cell size for ad hoc networks.
- B. Since WLAN adapters are not typically calibrated by manufacturers, this setting is a form of software calibration in which you can calibrate an (uncalibrated) adapter to match one of the calibrated adapters shown in the list. This process improves the reliability of RF data collection and reporting when uncalibrated adapters are used.
- C. This is the configuration area in which you specify the adapter type that will be used for the site survey so that the survey software can interpret that adapter's reported metrics (based on proprietary formulas) into an RF measurement that is standardized by the survey software and known to its users. This is done for every survey.
- D. The site survey software manufacturer allows you to view the collected RF data as if it were collected by a different

type of adapter. This functionality allows you to review survey data to determine how the RF environment will likely look based on the receive sensitivity and other RF capabilities of a specific client adapter.

Correct Answer: D

QUESTION 4

What type of pattern matches the 12 dBi antenna displayed in the exhibit?



Figure 1

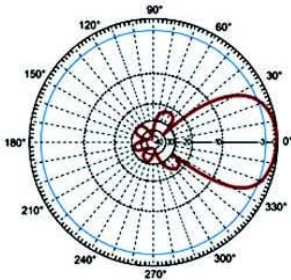


Figure 2

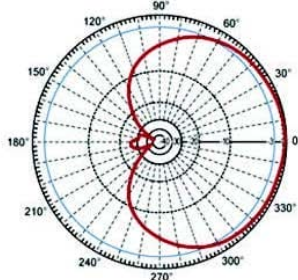


Figure 3

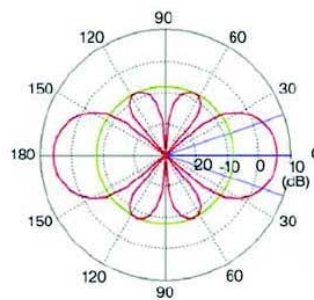
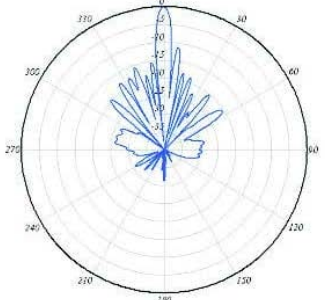


Figure 4



- A. Figure 1
- B. Figure 2
- C. Figure 3
- D. Figure 4

Correct Answer: A

QUESTION 5

As you plan a WLAN upgrade, you have assessed the network requirements and data signatures of your applications. One of the popular applications used on your network requires high bandwidth and low to medium Wi-Fi loss, but can tolerate moderate latency and jitter.

What application matches this description?

- A. FTP
- B. Email
- C. Skype chat
- D. Voice
- E. Video conferencing
- F. Video-on-demand

Correct Answer: F

[Latest PW0-250 Dumps](#)

[PW0-250 Practice Test](#)

[PW0-250 Braindumps](#)