

# PEGAPCRSA80V1\_2019<sup>Q&As</sup>

Pega Certified Robotics System Architect 80V1 2019

## Pass Pegasystems PEGAPCRSA80V1\_2019 Exam with 100% Guarantee

Free Download Real Questions & Answers **PDF** and **VCE** file from:

[https://www.leads4pass.com/pegapcrsa80v1\\_2019.html](https://www.leads4pass.com/pegapcrsa80v1_2019.html)

100% Passing Guarantee  
100% Money Back Assurance

Following Questions and Answers are all new published by  
Pegasystems Official Exam Center

- ⚙️ **Instant Download** After Purchase
- ⚙️ **100% Money Back** Guarantee
- ⚙️ **365 Days** Free Update
- ⚙️ **800,000+** Satisfied Customers



## QUESTION 1

In which two ways do the two publishers, Log4Net and File Publisher, differ? (Choose two.)

- A. Log4Net can provide a minimum number of log files to retain.
- B. Log4Net can append new data to the log file.
- C. Log4Net can set the log file size.
- D. Log4Net can change the directory location of the log file.

Correct Answer: AC

Reference: <https://community1.pega.com/community/pega-support/question/pega-robotics-studio-8-generational-logging>

---

## QUESTION 2

### DRAG DROP

When interrogating a Windows control, the drag and drop Default interrogation method does not work. You decide to use the Create Control option to interrogate the control. From the Interrogation Steps list, move all of the options to the Ordered Interrogation Steps column and place them in the correct order.

Select and Place:

## Interrogation Steps

On the application's designer tab, select the **Windows** tab.

Navigate to the window containing the control.

Click **List Windows**.

Confirm the control using **Highlight**.

Expand the windows to locate the control.

Select **Create Control** from the right-click menu.

## Ordered Interrogation Steps


Correct Answer:

## Interrogation Steps


## Ordered Interrogation Steps

Navigate to the window containing the control.

On the application's designer tab, select the **Windows** tab.

Expand the windows to locate the control.

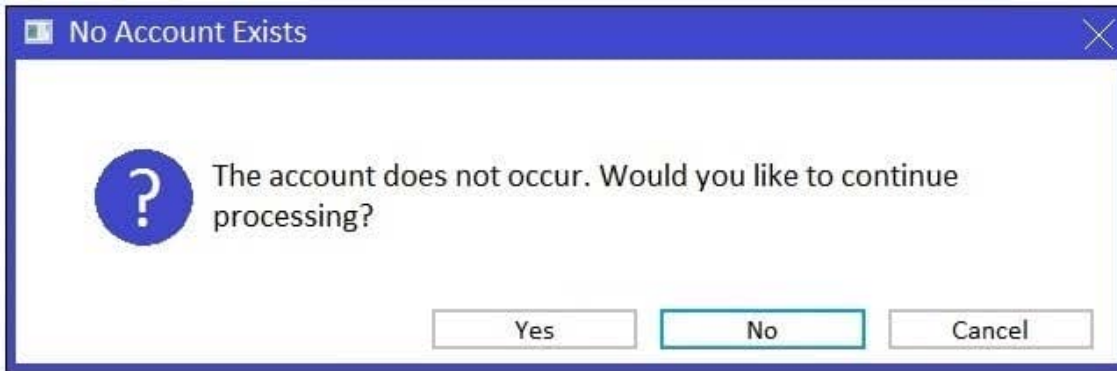
Confirm the control using **Highlight**.

Click **List Windows**.

Select **Create Control** from the right-click menu.

### QUESTION 3

You add a MessageDialog component to an automation. Based on the following image, which option shows the configuration settings that generates the message dialog?



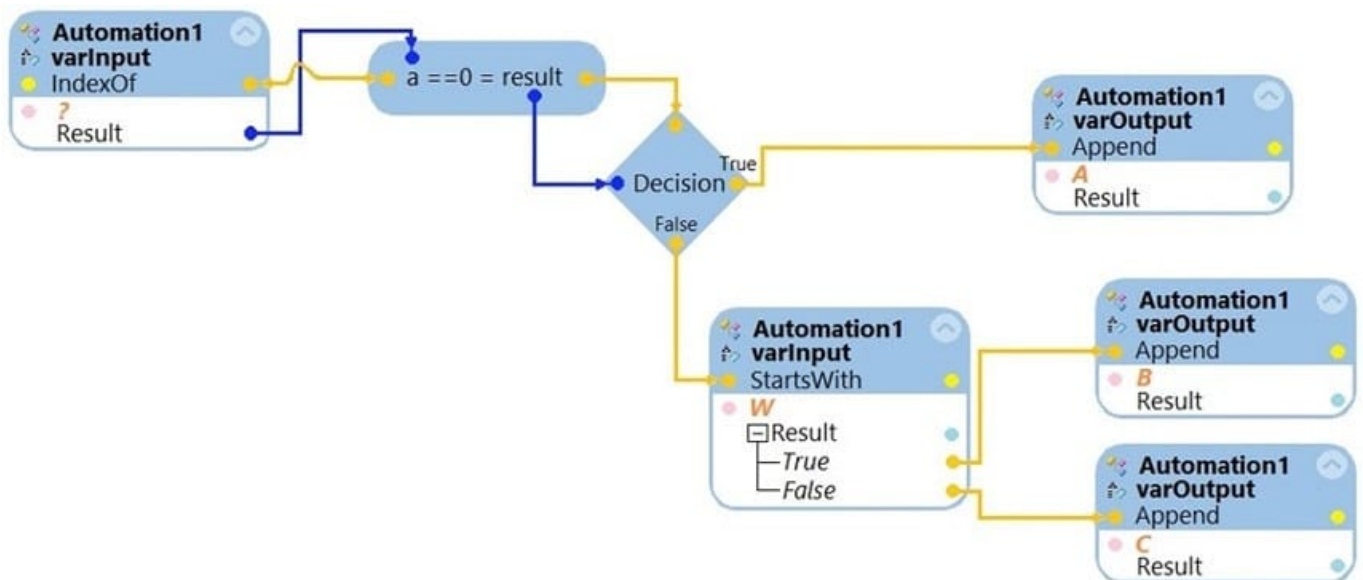
- A.
- |                   |  |                   |  |         |             |         |  |               |         |      |          |                 |  |         |      |             |  |         |  |               |  |        |                |
|-------------------|--|-------------------|--|---------|-------------|---------|--|---------------|---------|------|----------|-----------------|--|---------|------|-------------|--|---------|--|---------------|--|--------|----------------|
|                   | <table border="1"> <tr><td colspan="2"><b>Appearance</b></td></tr> <tr><td>Buttons</td><td>YesNoCancel</td></tr> <tr><td>Caption</td><td></td></tr> <tr><td>DefaultButton</td><td>Button2</td></tr> <tr><td>Icon</td><td>Question</td></tr> <tr><td colspan="2"><b>Behavior</b></td></tr> <tr><td>TopMost</td><td>True</td></tr> <tr><td colspan="2"><b>Data</b></td></tr> <tr><td>Message</td><td></td></tr> <tr><td colspan="2"><b>Design</b></td></tr> <tr><td>(Name)</td><td>messageDialog2</td></tr> </table> | <b>Appearance</b> |  | Buttons | YesNoCancel | Caption |  | DefaultButton | Button2 | Icon | Question | <b>Behavior</b> |  | TopMost | True | <b>Data</b> |  | Message |  | <b>Design</b> |  | (Name) | messageDialog2 |
| <b>Appearance</b> |  |                   |  |         |             |         |  |               |         |      |          |                 |  |         |      |             |  |         |  |               |  |        |                |
| Buttons           | YesNoCancel  |                   |  |         |             |         |  |               |         |      |          |                 |  |         |      |             |  |         |  |               |  |        |                |
| Caption           |  |                   |  |         |             |         |  |               |         |      |          |                 |  |         |      |             |  |         |  |               |  |        |                |
| DefaultButton     | Button2  |                   |  |         |             |         |  |               |         |      |          |                 |  |         |      |             |  |         |  |               |  |        |                |
| Icon              | Question   |                   |  |         |             |         |  |               |         |      |          |                 |  |         |      |             |  |         |  |               |  |        |                |
| <b>Behavior</b>   |  |                   |  |         |             |         |  |               |         |      |          |                 |  |         |      |             |  |         |  |               |  |        |                |
| TopMost           | True   |                   |  |         |             |         |  |               |         |      |          |                 |  |         |      |             |  |         |  |               |  |        |                |
| <b>Data</b>       |  |                   |  |         |             |         |  |               |         |      |          |                 |  |         |      |             |  |         |  |               |  |        |                |
| Message           |  |                   |  |         |             |         |  |               |         |      |          |                 |  |         |      |             |  |         |  |               |  |        |                |
| <b>Design</b>     |  |                   |  |         |             |         |  |               |         |      |          |                 |  |         |      |             |  |         |  |               |  |        |                |
| (Name)            | messageDialog2   |                   |  |         |             |         |  |               |         |      |          |                 |  |         |      |             |  |         |  |               |  |        |                |
- B.
- |                   |  |                   |  |         |             |         |  |               |         |      |          |                 |  |         |      |             |  |         |  |               |  |        |                |
|-------------------|--|-------------------|--|---------|-------------|---------|--|---------------|---------|------|----------|-----------------|--|---------|------|-------------|--|---------|--|---------------|--|--------|----------------|
|                   | <table border="1"> <tr><td colspan="2"><b>Appearance</b></td></tr> <tr><td>Buttons</td><td>YesNoCancel</td></tr> <tr><td>Caption</td><td></td></tr> <tr><td>DefaultButton</td><td>Button2</td></tr> <tr><td>Icon</td><td>Question</td></tr> <tr><td colspan="2"><b>Behavior</b></td></tr> <tr><td>TopMost</td><td>True</td></tr> <tr><td colspan="2"><b>Data</b></td></tr> <tr><td>Message</td><td></td></tr> <tr><td colspan="2"><b>Design</b></td></tr> <tr><td>(Name)</td><td>messageDialog2</td></tr> </table> | <b>Appearance</b> |  | Buttons | YesNoCancel | Caption |  | DefaultButton | Button2 | Icon | Question | <b>Behavior</b> |  | TopMost | True | <b>Data</b> |  | Message |  | <b>Design</b> |  | (Name) | messageDialog2 |
| <b>Appearance</b> |  |                   |  |         |             |         |  |               |         |      |          |                 |  |         |      |             |  |         |  |               |  |        |                |
| Buttons           | YesNoCancel  |                   |  |         |             |         |  |               |         |      |          |                 |  |         |      |             |  |         |  |               |  |        |                |
| Caption           |  |                   |  |         |             |         |  |               |         |      |          |                 |  |         |      |             |  |         |  |               |  |        |                |
| DefaultButton     | Button2  |                   |  |         |             |         |  |               |         |      |          |                 |  |         |      |             |  |         |  |               |  |        |                |
| Icon              | Question   |                   |  |         |             |         |  |               |         |      |          |                 |  |         |      |             |  |         |  |               |  |        |                |
| <b>Behavior</b>   |  |                   |  |         |             |         |  |               |         |      |          |                 |  |         |      |             |  |         |  |               |  |        |                |
| TopMost           | True   |                   |  |         |             |         |  |               |         |      |          |                 |  |         |      |             |  |         |  |               |  |        |                |
| <b>Data</b>       |  |                   |  |         |             |         |  |               |         |      |          |                 |  |         |      |             |  |         |  |               |  |        |                |
| Message           |  |                   |  |         |             |         |  |               |         |      |          |                 |  |         |      |             |  |         |  |               |  |        |                |
| <b>Design</b>     |  |                   |  |         |             |         |  |               |         |      |          |                 |  |         |      |             |  |         |  |               |  |        |                |
| (Name)            | messageDialog2   |                   |  |         |             |         |  |               |         |      |          |                 |  |         |      |             |  |         |  |               |  |        |                |
- C.
- |                   |  |                   |  |         |             |         |  |               |         |      |      |                 |  |         |      |             |  |         |  |               |  |        |                |
|-------------------|--|-------------------|--|---------|-------------|---------|--|---------------|---------|------|------|-----------------|--|---------|------|-------------|--|---------|--|---------------|--|--------|----------------|
|                   | <table border="1"> <tr><td colspan="2"><b>Appearance</b></td></tr> <tr><td>Buttons</td><td>YesNoCancel</td></tr> <tr><td>Caption</td><td></td></tr> <tr><td>DefaultButton</td><td>Button2</td></tr> <tr><td>Icon</td><td>None</td></tr> <tr><td colspan="2"><b>Behavior</b></td></tr> <tr><td>TopMost</td><td>True</td></tr> <tr><td colspan="2"><b>Data</b></td></tr> <tr><td>Message</td><td></td></tr> <tr><td colspan="2"><b>Design</b></td></tr> <tr><td>(Name)</td><td>messageDialog2</td></tr> </table> | <b>Appearance</b> |  | Buttons | YesNoCancel | Caption |  | DefaultButton | Button2 | Icon | None | <b>Behavior</b> |  | TopMost | True | <b>Data</b> |  | Message |  | <b>Design</b> |  | (Name) | messageDialog2 |
| <b>Appearance</b> |  |                   |  |         |             |         |  |               |         |      |      |                 |  |         |      |             |  |         |  |               |  |        |                |
| Buttons           | YesNoCancel  |                   |  |         |             |         |  |               |         |      |      |                 |  |         |      |             |  |         |  |               |  |        |                |
| Caption           |  |                   |  |         |             |         |  |               |         |      |      |                 |  |         |      |             |  |         |  |               |  |        |                |
| DefaultButton     | Button2  |                   |  |         |             |         |  |               |         |      |      |                 |  |         |      |             |  |         |  |               |  |        |                |
| Icon              | None   |                   |  |         |             |         |  |               |         |      |      |                 |  |         |      |             |  |         |  |               |  |        |                |
| <b>Behavior</b>   |  |                   |  |         |             |         |  |               |         |      |      |                 |  |         |      |             |  |         |  |               |  |        |                |
| TopMost           | True   |                   |  |         |             |         |  |               |         |      |      |                 |  |         |      |             |  |         |  |               |  |        |                |
| <b>Data</b>       |  |                   |  |         |             |         |  |               |         |      |      |                 |  |         |      |             |  |         |  |               |  |        |                |
| Message           |  |                   |  |         |             |         |  |               |         |      |      |                 |  |         |      |             |  |         |  |               |  |        |                |
| <b>Design</b>     |  |                   |  |         |             |         |  |               |         |      |      |                 |  |         |      |             |  |         |  |               |  |        |                |
| (Name)            | messageDialog2   |                   |  |         |             |         |  |               |         |      |      |                 |  |         |      |             |  |         |  |               |  |        |                |
- D.
- |                   |  |                   |  |         |             |         |  |               |         |      |          |                 |  |         |      |             |  |         |  |               |  |        |                |
|-------------------|--|-------------------|--|---------|-------------|---------|--|---------------|---------|------|----------|-----------------|--|---------|------|-------------|--|---------|--|---------------|--|--------|----------------|
|                   | <table border="1"> <tr><td colspan="2"><b>Appearance</b></td></tr> <tr><td>Buttons</td><td>YesNoCancel</td></tr> <tr><td>Caption</td><td></td></tr> <tr><td>DefaultButton</td><td>Button1</td></tr> <tr><td>Icon</td><td>Question</td></tr> <tr><td colspan="2"><b>Behavior</b></td></tr> <tr><td>TopMost</td><td>True</td></tr> <tr><td colspan="2"><b>Data</b></td></tr> <tr><td>Message</td><td></td></tr> <tr><td colspan="2"><b>Design</b></td></tr> <tr><td>(Name)</td><td>messageDialog2</td></tr> </table> | <b>Appearance</b> |  | Buttons | YesNoCancel | Caption |  | DefaultButton | Button1 | Icon | Question | <b>Behavior</b> |  | TopMost | True | <b>Data</b> |  | Message |  | <b>Design</b> |  | (Name) | messageDialog2 |
| <b>Appearance</b> |  |                   |  |         |             |         |  |               |         |      |          |                 |  |         |      |             |  |         |  |               |  |        |                |
| Buttons           | YesNoCancel  |                   |  |         |             |         |  |               |         |      |          |                 |  |         |      |             |  |         |  |               |  |        |                |
| Caption           |  |                   |  |         |             |         |  |               |         |      |          |                 |  |         |      |             |  |         |  |               |  |        |                |
| DefaultButton     | Button1  |                   |  |         |             |         |  |               |         |      |          |                 |  |         |      |             |  |         |  |               |  |        |                |
| Icon              | Question   |                   |  |         |             |         |  |               |         |      |          |                 |  |         |      |             |  |         |  |               |  |        |                |
| <b>Behavior</b>   |  |                   |  |         |             |         |  |               |         |      |          |                 |  |         |      |             |  |         |  |               |  |        |                |
| TopMost           | True   |                   |  |         |             |         |  |               |         |      |          |                 |  |         |      |             |  |         |  |               |  |        |                |
| <b>Data</b>       |  |                   |  |         |             |         |  |               |         |      |          |                 |  |         |      |             |  |         |  |               |  |        |                |
| Message           |  |                   |  |         |             |         |  |               |         |      |          |                 |  |         |      |             |  |         |  |               |  |        |                |
| <b>Design</b>     |  |                   |  |         |             |         |  |               |         |      |          |                 |  |         |      |             |  |         |  |               |  |        |                |
| (Name)            | messageDialog2   |                   |  |         |             |         |  |               |         |      |          |                 |  |         |      |             |  |         |  |               |  |        |                |

- A. Option A
- B. Option B
- C. Option C
- D. Option D

Correct Answer: D

## QUESTION 4

The variable varInput is a String that holds the value What is the output?



What is the outcome of the above automation?

- A. An exception is thrown.
- B. The variable varOutput ends with C.
- C. The variable varOutput ends with A.
- D. The variable varOutput ends with B.

Correct Answer: D

## QUESTION 5

Your log on automation is failing and you cannot proceed because the Submit button is not enabled. After searching the HTML code, you discover that the Submit button is enabled only after the Password field experiences a key press. How do you resolve the automation issue?

- A. On the Password field, add an Enabled property and set it to True.
- B. On the Password field, add a RaiseEvent method with onkeypress.
- C. On the Submit button, add a Disabled property and set it to True.
- D. On the Submit button, add a RaiseEvent method with onkeypress.

Correct Answer: A

[PEGAPCRSA80V1\\_2019  
VCE Dumps](#)

[PEGAPCRSA80V1\\_2019  
Practice Test](#)

[PEGAPCRSA80V1\\_2019  
Braindumps](#)