

# OMG-OCUP2-INT200<sup>Q&As</sup>

OMG Certified UML Professional (OCUP 2) - Intermediate Level





**Pass OMG OMG-OCUP2-INT200 Exam with 100%  
Guarantee**

Free Download Real Questions & Answers **PDF** and **VCE** file from:

<https://www.leads4pass.com/omg-ocup2-int200.html>

100% Passing Guarantee  
100% Money Back Assurance

Following Questions and Answers are all new published by OMG  
Official Exam Center

-  **Instant Download** After Purchase
-  **100% Money Back** Guarantee
-  **365 Days** Free Update
-  **800,000+** Satisfied Customers



## QUESTION 1

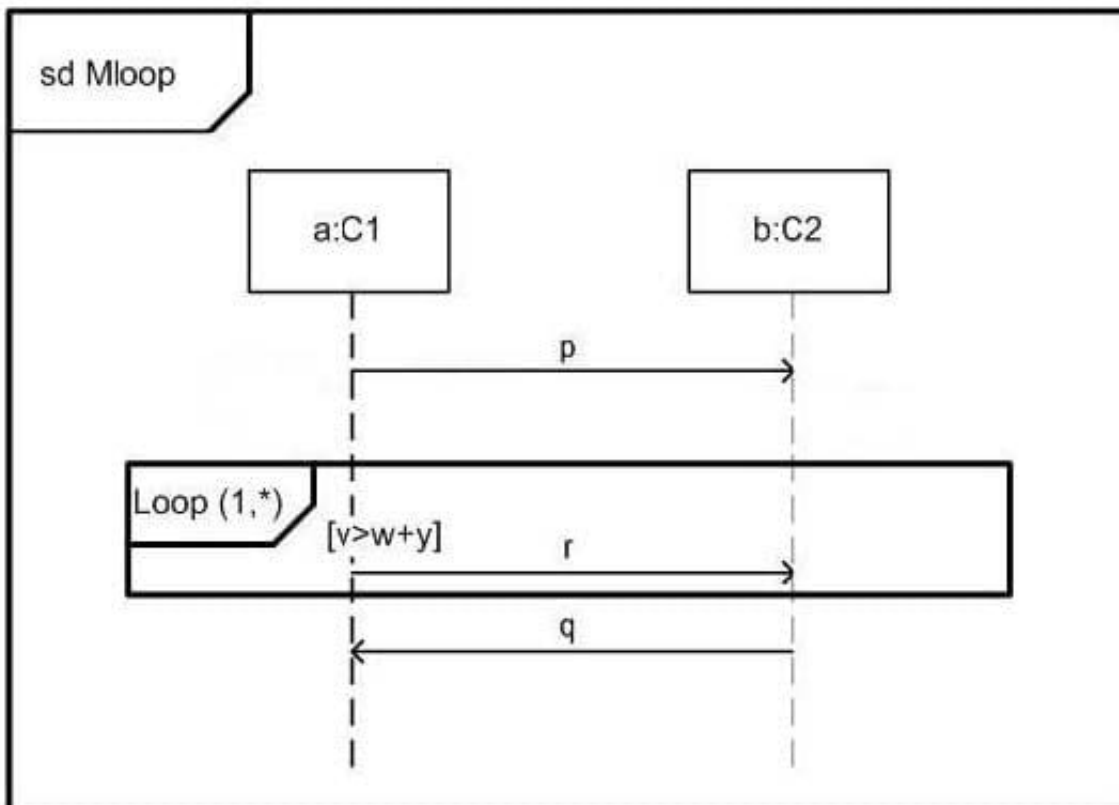
What does a conditional node consist of?

- A. clauses
- B. guards
- C. parameters
- D. body Part nodes
- E. behaviors
- F. partitions

Correct Answer: A

## QUESTION 2

In the exhibit, what applies if the interaction constraint is false when the loop is entered?



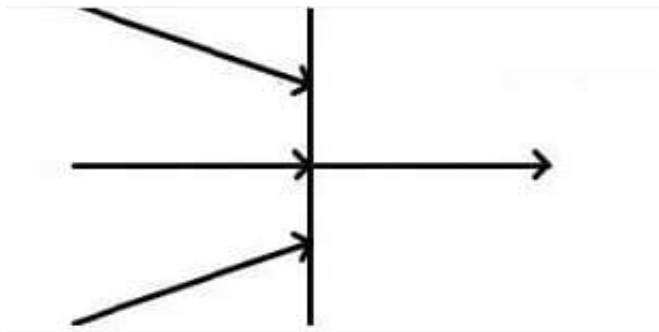
- A. All valid traces will include message r.
- B. Valid traces include both the case where the loop iterates once, and when it iterates zero times.

- C. The specification is illegal.
- D. The loop body is not included in a valid trace.

Correct Answer: A

**QUESTION 3**

In the exhibit, how many of the arrows must provide values for the outgoing arrow to be given a value?

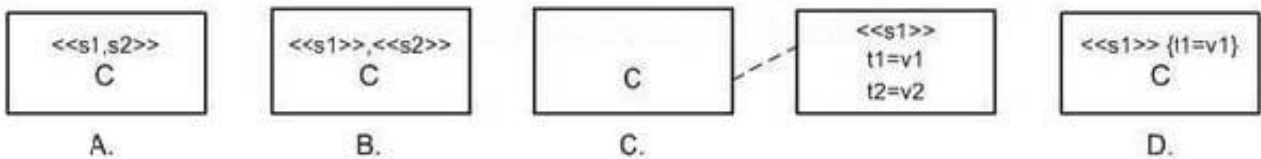


- A. none
- B. three
- C. one
- D. two

Correct Answer: B

**QUESTION 4**

What stereotype notation is NOT correct?



- A. A
- B. B
- C. C
- D. D

Correct Answer: D

## QUESTION 5

What does a run-to-completion processing for state machines mean?

- A. Interrupts are disabled while the state machine is running.
- B. No other event will be processed until the current event is fully processed.
- C. The thread executing the state machine cannot be pre-empted by the scheduler.
- D. The executions of orthogonal regions are serialized.

Correct Answer: B

[Latest OMG-OCUP2-INT200 Dumps](#)

[OMG-OCUP2-INT200 Study Guide](#)

[OMG-OCUP2-INT200 Braindumps](#)