

OMG-OCUP-200^{Q&As}

OMG-Certified UML Professional Intermediate Exam

Pass OMG OMG-OCUP-200 Exam with 100% Guarantee

Free Download Real Questions & Answers **PDF** and **VCE** file from:

<https://www.leads4pass.com/omg-ocup-200.html>

100% Passing Guarantee
100% Money Back Assurance

Following Questions and Answers are all new published by OMG
Official Exam Center

- ⚙️ **Instant Download** After Purchase
- ⚙️ **100% Money Back** Guarantee
- ⚙️ **365 Days** Free Update
- ⚙️ **800,000+** Satisfied Customers



QUESTION 1

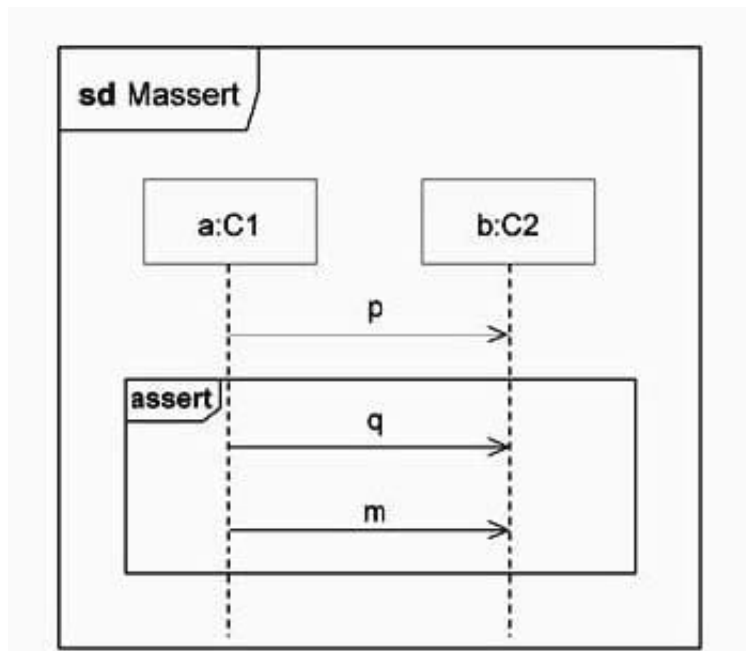
How many arrows can connect to a partition?

- A. none
- B. one
- C. two
- D. any number

Correct Answer: A

QUESTION 2

In the exhibit, what is true for Massert?



- A. Following a message p, a message m would be valid.
- B. Following a message p, a message m would be invalid.
- C. A message q that occurs before a message p is invalid.
- D. A message p may come anywhere in the assert combined fragment.

Correct Answer: B

QUESTION 3

What kind of element is a central buffer?

- A. state
- B. action
- C. activity
- D. behavior
- E. object node
- F. control node

Correct Answer: E

QUESTION 4

What is true of a local transition of a state?

- A. equivalent to an internal transition
- B. any transition that occurs only in that state
- C. a transition that cannot be triggered if no substate is active
- D. a transition that will not execute the exit and entry actions of the state but only those of its substates

Correct Answer: D

QUESTION 5

What might a connector specify?

- A. links
- B. classes
- C. messages
- D. associations
- E. dependencies

Correct Answer: A

[OMG-OCUP-200 Practice Test](#)

[OMG-OCUP-200 Study Guide](#)

[OMG-OCUP-200 Braindumps](#)