

OMG-OCUP-200^{Q&As}

OMG-Certified UML Professional Intermediate Exam

Pass OMG OMG-OCUP-200 Exam with 100% Guarantee

Free Download Real Questions & Answers **PDF** and **VCE** file from:

<https://www.leads4pass.com/omg-ocup-200.html>

100% Passing Guarantee
100% Money Back Assurance

Following Questions and Answers are all new published by OMG
Official Exam Center

-  **Instant Download** After Purchase
-  **100% Money Back** Guarantee
-  **365 Days** Free Update
-  **800,000+** Satisfied Customers



QUESTION 1

What does the lower bound of the multiplicity of a part in a structured classifier indicate? The minimum number of .

- A. links that can be connected to that part
- B. connectors that can be connected to that part
- C. instances corresponding to that part that can exist when the classifier is instantiated
- D. times that an instance corresponding to that part can be created during the lifetime of the structured classifier instance

Correct Answer: C

QUESTION 2

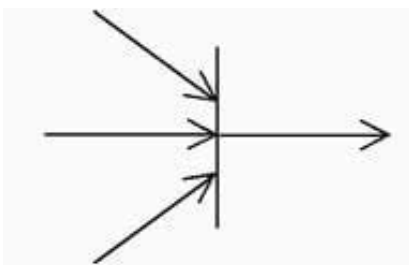
What is NOT a correct assertion?

- A. Stereotypes extending a model element are immutable.
- B. Stereotypes extending a model element can be retracted at any time.
- C. A model element can be extended by several stereotypes at the same time.
- D. Un-applying a profile from a model deletes all related stereotypes extending the model.

Correct Answer: A

QUESTION 3

In the exhibit, if the incoming arrows provide three control values, how many control values are provided to the outgoing arrow?

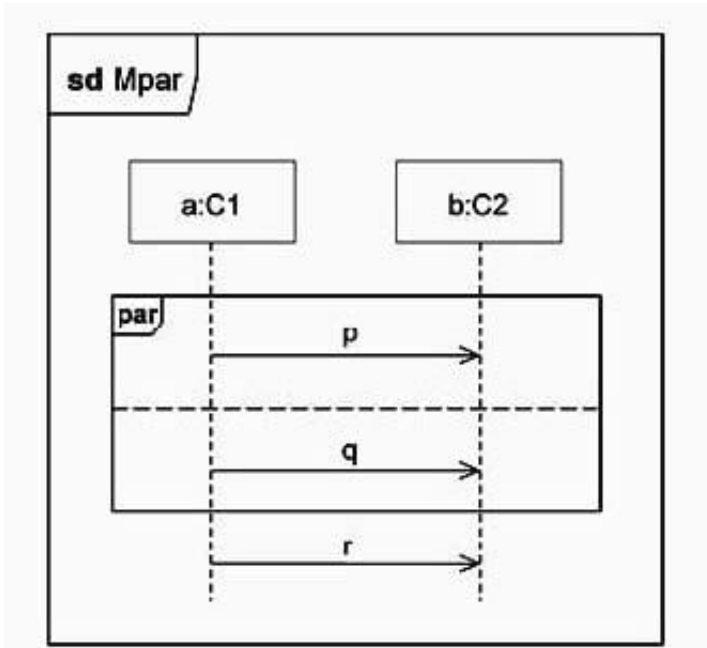


- A. none
- B. one
- C. two
- D. three

Correct Answer: B

QUESTION 4

In the exhibit, what is true about Mpar?



- A. Every trace contains all three messages.
- B. Sending p must always precede sending q.
- C. Receiving p must always precede receiving q.
- D. There are legal traces that do not contain message q.

Correct Answer: A

QUESTION 5

What kind of element is a central buffer?

- A. state
- B. action
- C. activity
- D. behavior
- E. object node
- F. control node

Correct Answer: E

[OMG-OCUP-200 VCE
Dumps](#)

[OMG-OCUP-200 Practice
Test](#)

[OMG-OCUP-200 Study
Guide](#)