

OMG-OCUP-100^{Q&As}

OMG-Certified UML Professional Fundamental Exam

Pass OMG OMG-OCUP-100 Exam with 100% Guarantee

Free Download Real Questions & Answers **PDF** and **VCE** file from:

<https://www.leads4pass.com/omg-ocup-100.html>

100% Passing Guarantee
100% Money Back Assurance

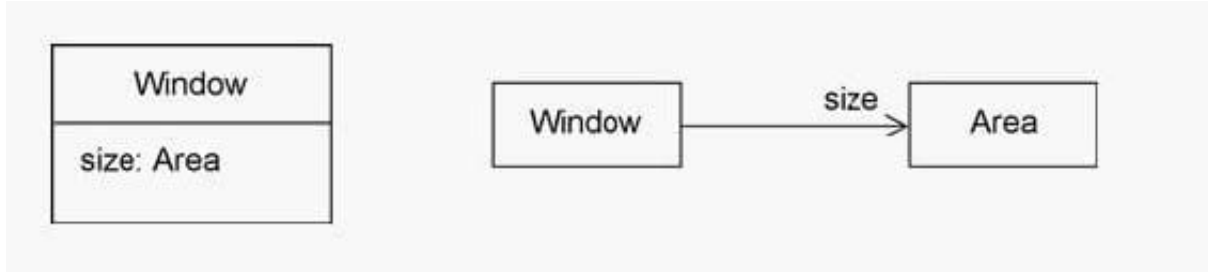
Following Questions and Answers are all new published by OMG
Official Exam Center

-  **Instant Download** After Purchase
-  **100% Money Back** Guarantee
-  **365 Days** Free Update
-  **800,000+** Satisfied Customers



QUESTION 1

In the exhibit, what is the meaning of size in these two diagrams?

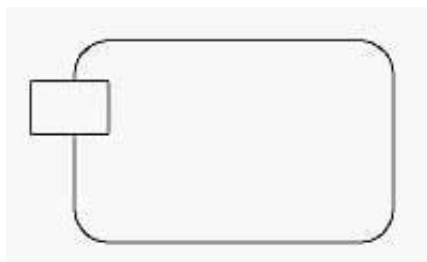


- A. Only one or the other should be used, not both, in order to avoid a name conflict.
- B. The size end name on the association indicates data storage and the attribute does not.
- C. There is one size property diagrammed both as an attribute and as an association end.
- D. There are two size properties that have no name conflict as long as each size is private.
- E. The size attribute in the class indicates that it will be stored within the class and the end name does not.

Correct Answer: C

QUESTION 2

What does a rectangle on the border of an activity diagram (as depicted in the exhibit) esent in UML 2.0 activity diagrams?

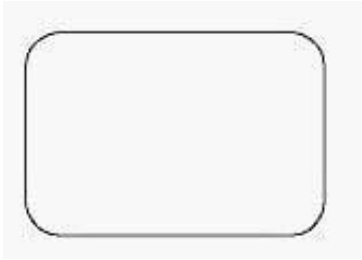


- A. pin
- B. port
- C. place
- D. entry state
- E. parameter node

Correct Answer: E

QUESTION 3

What does the symbol in the exhibit represent inside UML 2.0 activity diagrams?



- A. state
- B. action
- C. activity
- D. behavior
- E. object node

Correct Answer: B

QUESTION 4

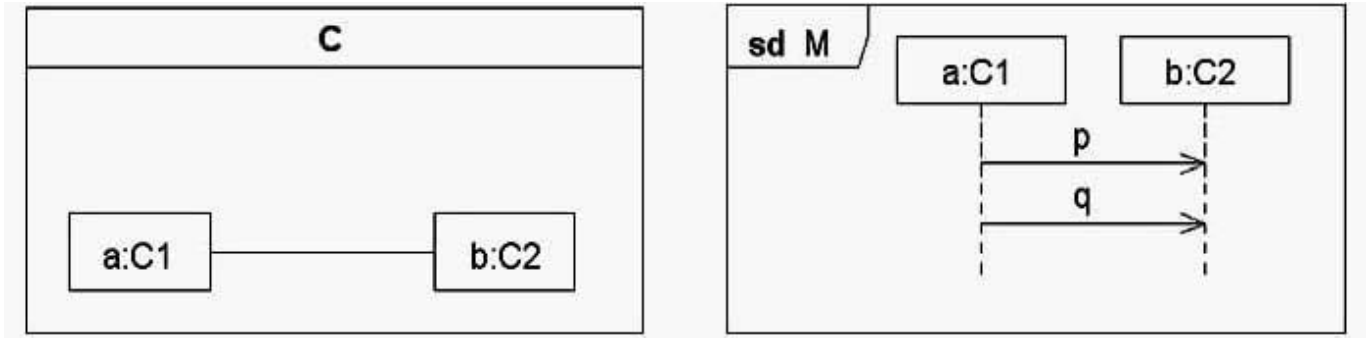
What do abstraction dependencies represent? (Choose two)

- A. same concept
- B. different concepts
- C. same level of abstract or different viewpoints
- D. same level of abstraction or the same viewpoint
- E. different levels of abstraction or different viewpoints

Correct Answer: AE

QUESTION 5

What is true concerning the UML model depicted in the exhibit?



- A. M is not a behavior of C since p and q are not defined within C.
- B. If M is a behavior in C, then a in C is the property represented by lifeline a in M.
- C. a and b are lifelines within C, as well as being the same entities as those referenced in M.
- D. The communication diagram on the left forms the base for the sequence diagram on the right.

Correct Answer: B

[Latest OMG-OCUP-100 Dumps](#)

[OMG-OCUP-100 VCE Dumps](#)

[OMG-OCUP-100 Study Guide](#)