



OG0-023^{Q&As}

ArchiMate 2 Combined Part 1 and 2 Examination

Pass The Open Group OG0-023 Exam with 100% Guarantee

Free Download Real Questions & Answers **PDF** and **VCE** file from:

<https://www.lead4pass.com/og0-023.html>

100% Passing Guarantee
100% Money Back Assurance

Following Questions and Answers are all new published by The Open Group Official Exam Center

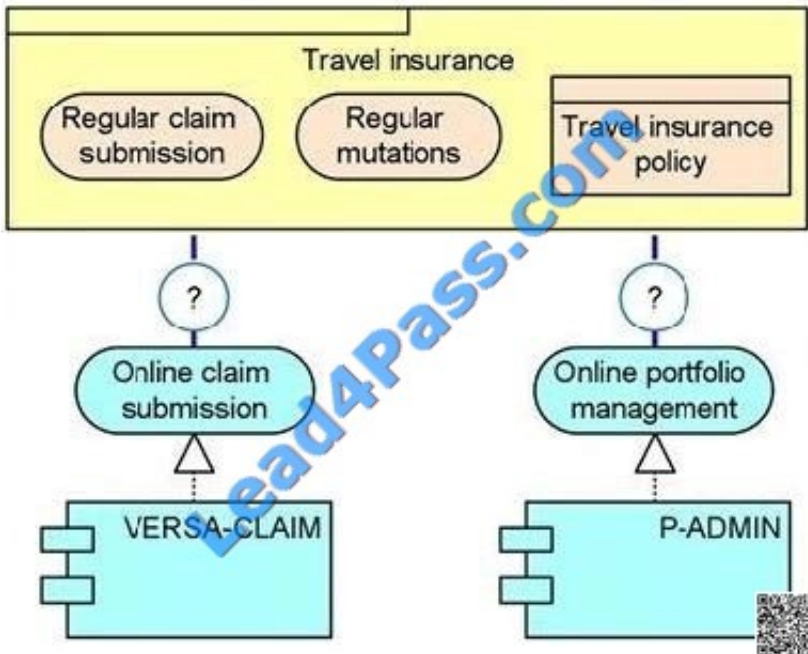
-  **Instant Download** After Purchase
-  **100% Money Back** Guarantee
-  **365 Days** Free Update
-  **800,000+** Satisfied Customers





QUESTION 1

A travel insurance product offers a combination of non-automated and automated services to customers, as shown in the following diagram.



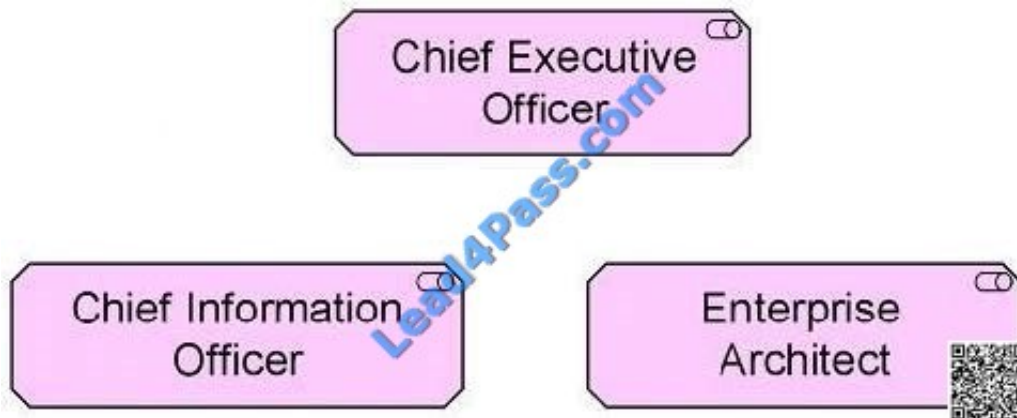
Which of the following is the correct relationship to be used between the product and the application services?

- A. Product aggregates Application Services
- B. Application Services aggregate Product
- C. Product realizes Application Services
- D. Application Services realize Product

Correct Answer: A

QUESTION 2

The following diagram shows a typical group of stakeholders:



Which ArchiMate viewpoint abstraction level would support these stakeholders for the purpose of change management?

- A. Coherence
- B. Designing
- C. Details
- D. Overview

Correct Answer: D

QUESTION 3

Consider the following entities commonly found in a typical large organization:

1.
A chief executive
2.
A software application for financial management
3.
A human resources department
4.
Server hardware that is used to host business applications

What is the single ArchiMate aspect in the ArchiMate Framework that describes all these entities?

- A. Passive structure
- B. Business structure
- C. Behavior

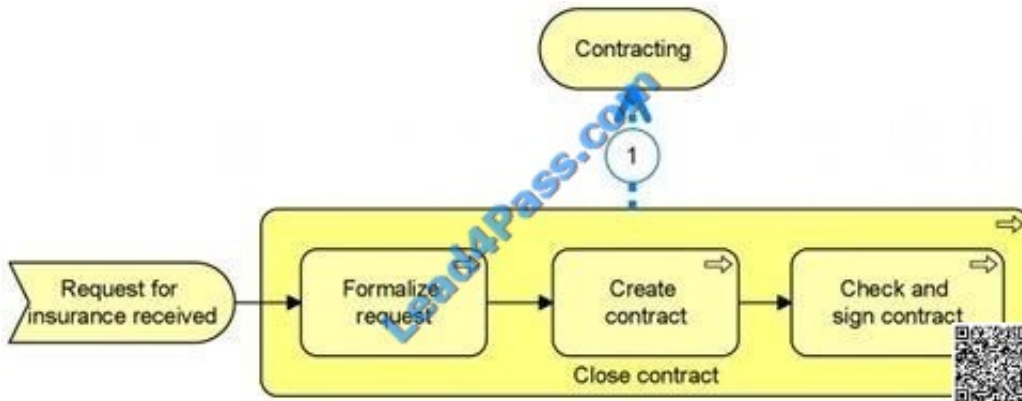


D. Active structure

Correct Answer: D

QUESTION 4

Consider the following diagram which shows the service Contracting that is delivered by the business process Close contract.



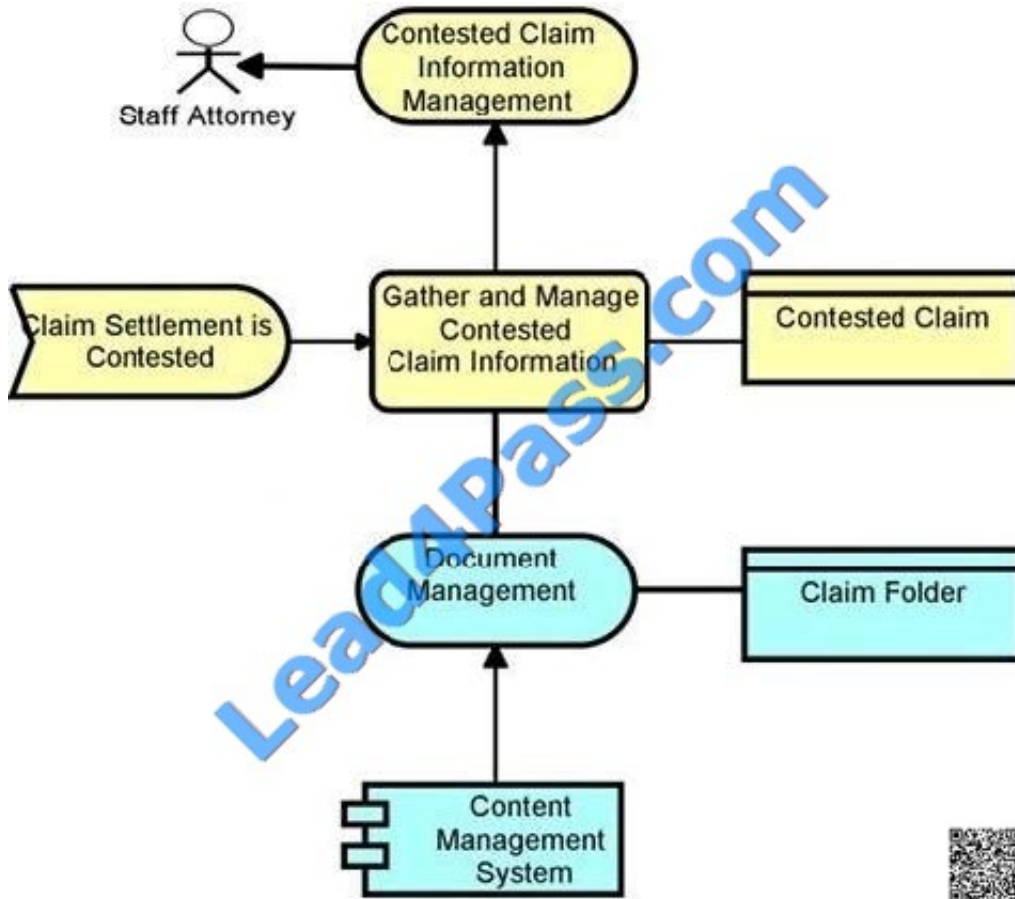
What is the most appropriate ArchiMate relationship to be used for (1)?

- A. Assignment
- B. Realization
- C. Aggregation
- D. Used by

Correct Answer: B

QUESTION 5

Consider the following diagram, which conforms to a standard ArchiMate viewpoint that uses a simplified notation:



To which standard ArchiMate viewpoint does this diagram conform?

- A. Elementary viewpoint
- B. Introductory viewpoint
- C. Coherence viewpoint
- D. Deciding viewpoint

Correct Answer: B

[OG0-023 PDF Dumps](#)

[OG0-023 Practice Test](#)

[OG0-023 Study Guide](#)



To Read the [Whole Q&As](#), please purchase the [Complete Version](#) from [Our website](#).

Try our product !

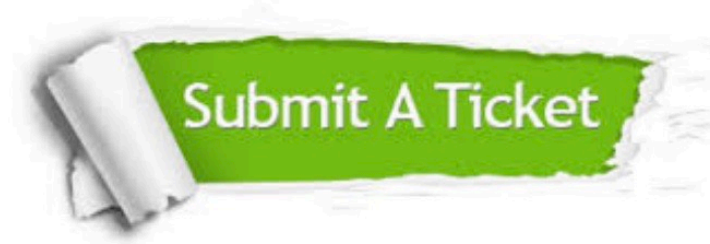
100% Guaranteed Success
100% Money Back Guarantee
365 Days Free Update
Instant Download After Purchase
24x7 Customer Support
Average 99.9% Success Rate
More than 800,000 Satisfied Customers Worldwide
Multi-Platform capabilities - [Windows](#), [Mac](#), [Android](#), [iPhone](#), [iPod](#), [iPad](#), [Kindle](#)

We provide exam PDF and VCE of Cisco, Microsoft, IBM, CompTIA, Oracle and other IT Certifications. You can view Vendor list of All Certification Exams offered:

<https://www.lead4pass.com/allproducts>

Need Help

Please provide as much detail as possible so we can best assist you.
To update a previously submitted ticket:



 <p>One Year Free Update Free update is available within One Year after your purchase. After One Year, you will get 50% discounts for updating. And we are proud to boast a 24/7 efficient Customer Support system via Email.</p>	 <p>Money Back Guarantee To ensure that you are spending on quality products, we provide 100% money back guarantee for 30 days from the date of purchase.</p>	 <p>Security & Privacy We respect customer privacy. We use McAfee's security service to provide you with utmost security for your personal information & peace of mind.</p>
---	---	--

Any charges made through this site will appear as Global Simulators Limited.
All trademarks are the property of their respective owners.
Copyright © lead4pass, All Rights Reserved.