



OG0-023^{Q&As}

ArchiMate 2 Combined Part 1 and 2 Examination

Pass The Open Group OG0-023 Exam with 100% Guarantee

Free Download Real Questions & Answers **PDF** and **VCE** file from:

<https://www.lead4pass.com/og0-023.html>

100% Passing Guarantee
100% Money Back Assurance

Following Questions and Answers are all new published by The Open Group Official Exam Center

-  **Instant Download** After Purchase
-  **100% Money Back** Guarantee
-  **365 Days** Free Update
-  **800,000+** Satisfied Customers





QUESTION 1

Scenario Please read this scenario prior to answering the Question The daily mutual fund trading cycle consists of four key processes: Transaction capture, pricing, trading and reconciliation. Transaction capture consists of two sub-processes: manual exchange and loans and distributions (LSD). For

transaction capture, retirement plan participants use an online account management application to enter manual fund exchange transactions. For LSD, plan participants use a separate application to enter requests. The LandD application determines whether the request can be fulfilled based on the mutual fund balances held in each plan balances and a set of business rules. Each day's captured manual exchange transactions accumulate in a transaction database.

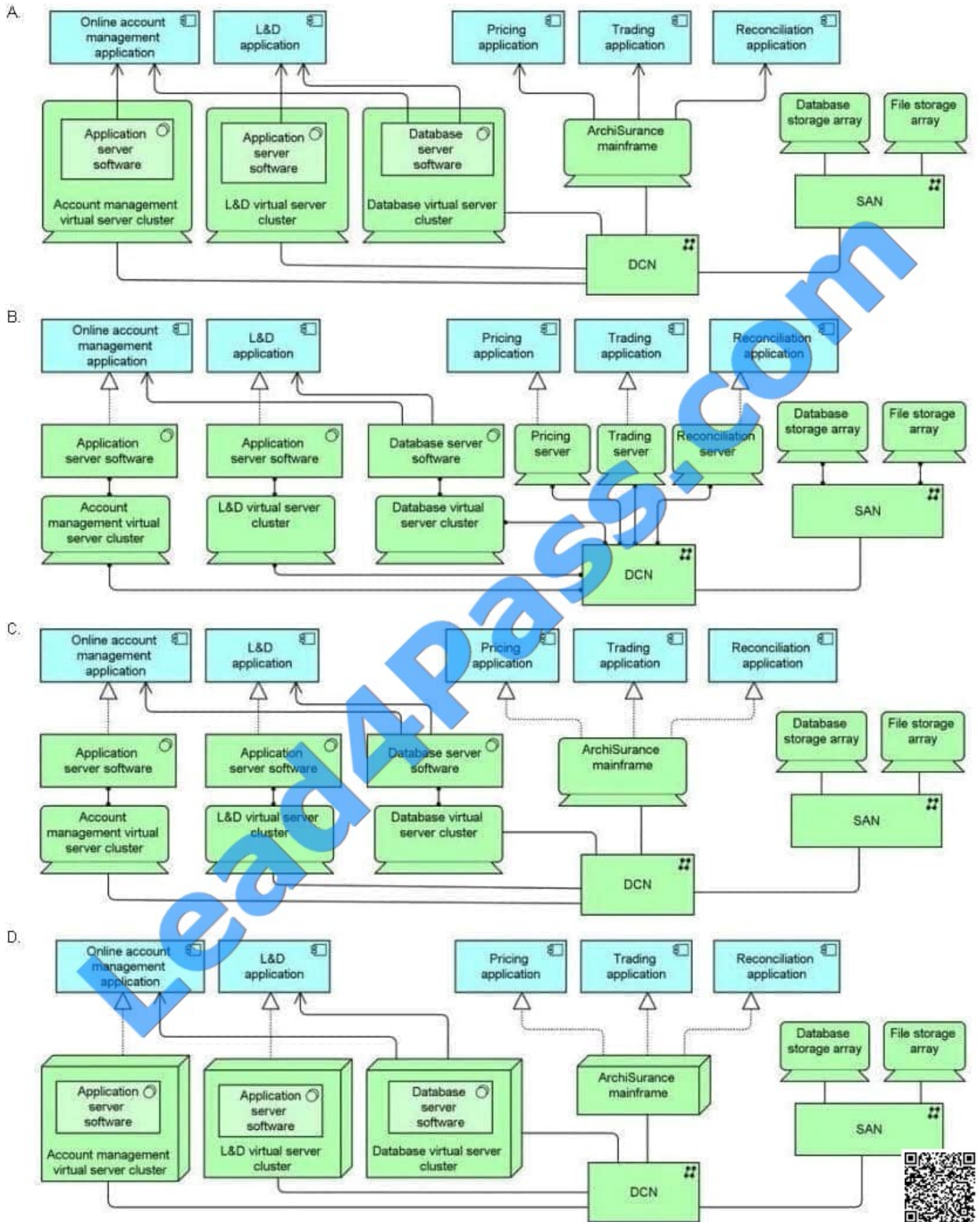
ArchiSurance contracts with a third-party information service to receive a file of mutual fund prices at the close of each trading day.

The pricing application uses this file to convert captured transaction into trades, and then validates each trade against the mutual fund balances held in each plan. The pricing generates a trade file with the minimum number of trades necessary. The trading application sends this file to an external trading service. When the trading application receives a confirmation file back from the trading service, it passes it to the reconciliation application, which updates the plan recordkeeping database.

The account management and LSD applications are hosted on separate application server clusters. Each cluster is a physically separate host that runs application server software on a set of virtualized hosts. All of these applications use a database server infrastructure that is hosted on another separate cluster of virtualized servers also on a dedicated physical host. The pricing, consolidation, trading and reconciliation applications, however, are batch applications that run on the ArchiSurance mainframe computer. All application hosts are connected via a converged data center network (DCN), which also connects them to a storage area network (SAN) as well as a wide area network (WAN) that is used to communicate with the external trading service. The SAN includes two physically separate storage arrays, one of which holds data for all databases, and another that holds data for all files. Refer to the Scenario

You have been asked by a team of IT auditors to show the applications used for daily trading and the infrastructure that underlies them, including all ArchiSurance servers, storage arrays and networks. It is not necessary to model the WAN or other external infrastructure.

Which answer best describes the applications and infrastructure?



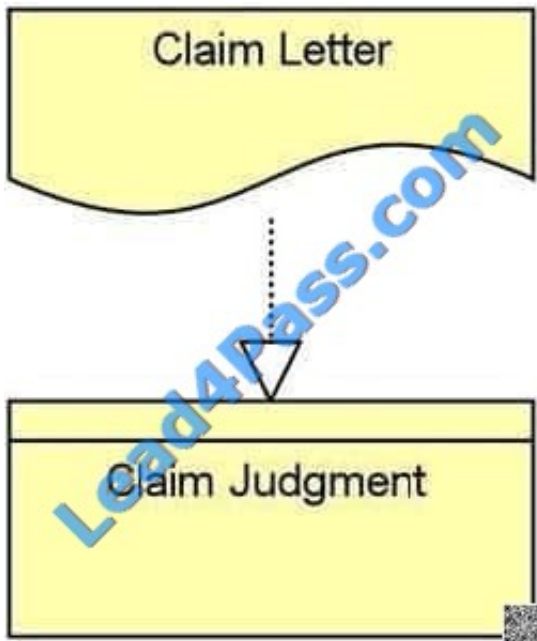
A. B. C. D.



Correct Answer: C

QUESTION 2

Consider the following diagram:



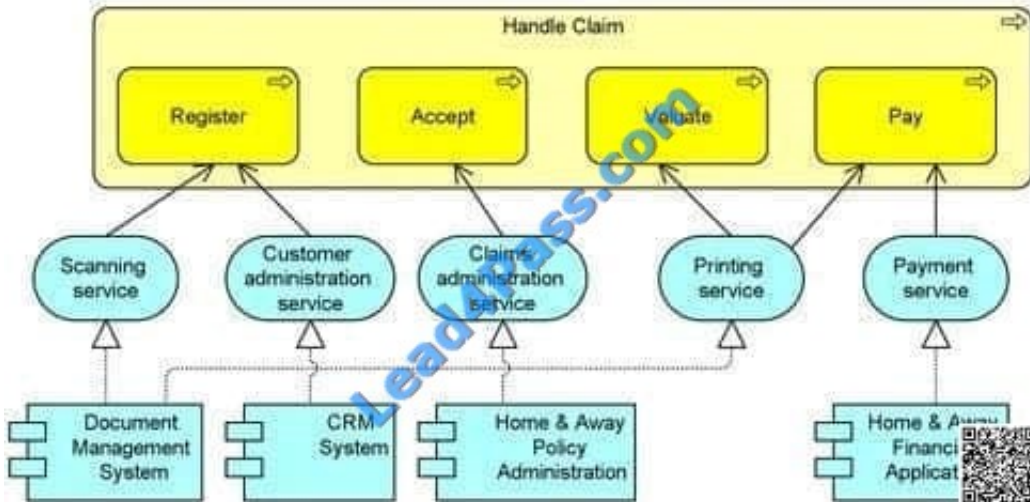
Which of the following most correctly interprets the diagram?

- A. A Claim Letter represents a Claim Judgment
- B. Information from Claim Letters is considered in Claim Judgments
- C. Claim Letters are written before Claim Judgments are made
- D. A Claim Letter is a particular type of Claim Judgment

Correct Answer: A

QUESTION 3

Consider the following diagram:



In which phase of the TOGAF Architecture Development Method (ADM) would such a view be most applicable?

- A. Preliminary Phase
- B. Phase B: Business Architecture
- C. Phase C: Information Systems Architectures
- D. Phase D: Technology Architecture

Correct Answer: C

QUESTION 4

Which standard ArchiMate viewpoint focuses on the (internal) structure of a company, a department, or a network of companies, and identifies authorities and responsibilities?

- A. Actor Co-operation viewpoint
- B. Organizational viewpoint
- C. Business Function viewpoint
- D. Business Process Co-operation viewpoint

Correct Answer: B

QUESTION 5

Scenario

Please read this scenario prior to answering the question ArchiSurance senior management; board members, customers and major stockholders have long been concerned about disaster resiliency in light of the company's heavy reliance on

a single data center. The data center is located in an area that is prone to flooding and earthquakes, according to expert



assessments done by consultants retained for this purpose. In addition, the data center is located under a busy cafeteria,

and water occasionally leaks through its ceiling.

To address these problems, ArchiSurance has developed a plan to move from its current data center to a pair of ready-to-use data centers in separate cities. The data center move is designed to reduce the risk of business interruption,

reduce both planned and unplanned downtime for critical applications, and reassure ArchiSurance stakeholders. However, a number of limitations make the planned transition to the new data centers particularly challenging. A number of

critical ArchiSurance applications cannot be offline for more than an hour, and any downtime for these application must only occur in certain four-hour windows each weekend. Also, the move cannot occur during quarterly or year-end closing

periods in order to avoid interrupting critical processing. Fulfillment of these specific type of requirements will reduce the risk of business interruption from the data center move activities themselves.

ArchiSurance management has therefore planned a multi-phase data center transformation program. All of the activities in each phase are necessary to ensure a progression of stable and fully functional data center configurations. The first

phase consists of detailed scheduling and planning to produce a comprehensive transformation plan that meets ArchiSurance timing and scheduling requirements. During the second phase, ArchiSurance is to contract for the hardware and

software required for the new datacenters, as well for refunds for the hardware and software to be returned from the current data center once it is shut down. During the third phase, the new data centers are to be set up, and the new

hardware and software are to be tested in parallel with what is already in production. The actual transition between the old and new data centers occurs in the fourth phase, and the fifth phase involves shutting down and dismantling the old

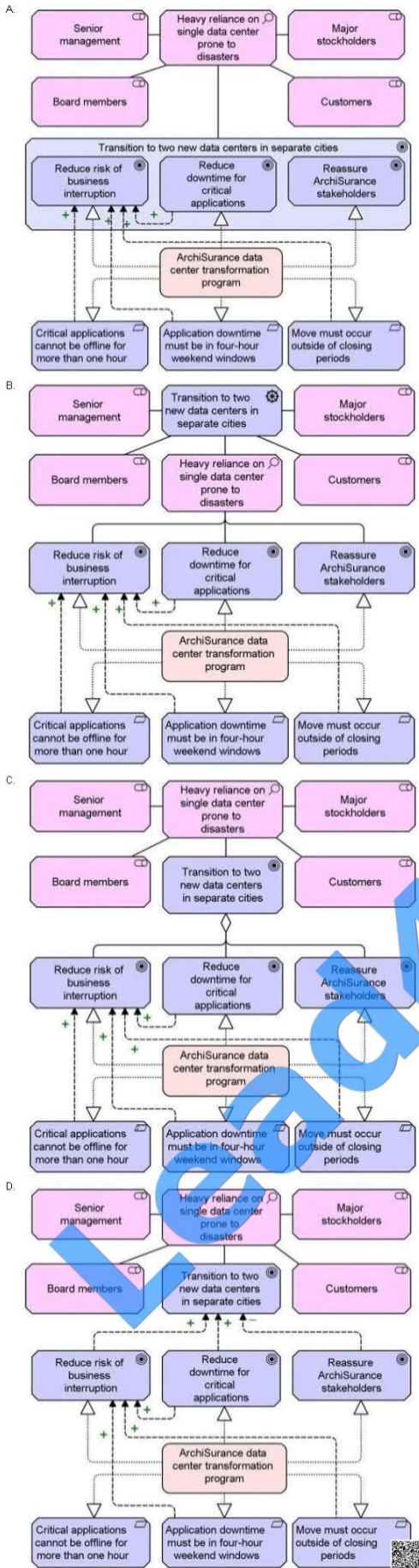
data center, and returning its hardware and software for contracted refunds. Phases two through five are each to be initiated when specific conditions are met in the previous phase.

Refer to the Scenario

The head of IT has asked you to help her explain why ArchiSurance decided to transform its data center infrastructure. You must model the stakeholders, the motivations, and the influencing relationships between these motivations. You must

also model the specific goals realized by the data center transformation program and the limitations within which this program must operate.

Which answer provides the best explanation?





A. B. C. D.

Correct Answer: A

[OG0-023 VCE Dumps](#)

[OG0-023 Practice Test](#)

[OG0-023 Study Guide](#)



To Read the [Whole Q&As](#), please purchase the [Complete Version](#) from [Our website](#).

Try our product !

100% Guaranteed Success
100% Money Back Guarantee
365 Days Free Update
Instant Download After Purchase
24x7 Customer Support
Average 99.9% Success Rate
More than 800,000 Satisfied Customers Worldwide
Multi-Platform capabilities - [Windows](#), [Mac](#), [Android](#), [iPhone](#), [iPod](#), [iPad](#), [Kindle](#)

We provide exam PDF and VCE of Cisco, Microsoft, IBM, CompTIA, Oracle and other IT Certifications. You can view Vendor list of All Certification Exams offered:

<https://www.lead4pass.com/allproducts>

Need Help

Please provide as much detail as possible so we can best assist you.
To update a previously submitted ticket:



 <p>One Year Free Update Free update is available within One Year after your purchase. After One Year, you will get 50% discounts for updating. And we are proud to boast a 24/7 efficient Customer Support system via Email.</p>	 <p>Money Back Guarantee To ensure that you are spending on quality products, we provide 100% money back guarantee for 30 days from the date of purchase.</p>	 <p>Security & Privacy We respect customer privacy. We use McAfee's security service to provide you with utmost security for your personal information & peace of mind.</p>
---	---	--

Any charges made through this site will appear as Global Simulators Limited.
All trademarks are the property of their respective owners.
Copyright © lead4pass, All Rights Reserved.