

OAT^{Q&As}

Optometry Admission

Pass Test Prep OAT Exam with 100% Guarantee

Free Download Real Questions & Answers **PDF** and **VCE** file from:

<https://www.leads4pass.com/oat.html>

100% Passing Guarantee
100% Money Back Assurance

Following Questions and Answers are all new published by Test Prep
Official Exam Center

- ⚙️ **Instant Download** After Purchase
- ⚙️ **100% Money Back** Guarantee
- ⚙️ **365 Days** Free Update
- ⚙️ **800,000+** Satisfied Customers



QUESTION 1

In a classroom of 189 students, the ratio of boys to girls is 5 : 4. How many boys are there in the classroom?

- A. 38
- B. 84
- C. 105
- D. 120
- E. 155

Correct Answer: C

The simplest way to approach these problems is to divide the total number of students (189) by the

combined 'parts' ($5 + 4 = 9$). Thus $189 \div 9 = 21$.

Multiply 21 by the gender of interest ratio (5): $21 \times 5 = 105$ male students.

For females you would multiply 21 by 4 = 84 female students.

Add $105 + 84$ to verify = 189.

QUESTION 2

Which of the following is incorrect in regards to mitosis and meiosis?

- A. Both mitosis and meiosis have 1 round of replication.
- B. Meiosis has 2 rounds of division.
- C. Mitosis has 1 round of division.
- D. There is no crossing over in mitosis.
- E. None of the above.

Correct Answer: E

All of the answer choices are indeed correct.

QUESTION 3

Solution A has a pH of 2, whereas Solution B has a pH for 4.5. How much more acidic is Solution A over Solution B?

- A. 10x more acidic
- B. 2.25x more acidic

- C. 100x more acidic
- D. 315x more acidic
- E. 1000x more acidic

Correct Answer: D

There is a difference of pH of 2.5. We know that difference in acidity can be calculated with 10^x , where x = difference in acidity.

102.5 is a number you cannot calculate in your head without a calculator. But you know $10^2 = 100$, and $10^3 = 1000$. Thus, you know the answer lies between 100 and 1000, and there is one answer choice that is in between those 2 values (but not the actual values).

QUESTION 4

A 1-gallon bottle containing 20% apple juice is mixed with a 2-gallon bottle containing 30% apple juice. What is the percentage of apple juice in the 3-gallon mixture?

- A. 23%
- B. 27%
- C. 30%
- D. 50%
- E. 59%

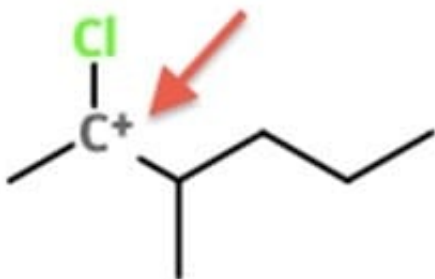
Correct Answer: B

This question can be solved in numerous ways. If 1 gallon has 20% apple juice, it means apple juice consists of 0.2 gallons. If the 2 gallon has 30% apple juice, it means apple juice consists of 0.6 gallons. Thus, there are a total of 0.8 gallons of apple juice in the mixture of the total 3 gallons.

Find the percentage: $(0.8 \text{ gallons of apple juice} / 3 \text{ total gallons}) \times 100 = \sim 27\%$

QUESTION 5

What is the hybridization of this atom?



- A. sp
- B. sp²
- C. sp³
- D. s
- E. 2s²

Correct Answer: B

Pay special attention to the '+' symbol indicating a cation. If it lacked a positive or negative sign, it would be a sp³ hybridization.

[OAT VCE Dumps](#)

[OAT Exam Questions](#)

[OAT Braindumps](#)