

NSE8_810^{Q&As}

Fortinet Network Security Expert 8 Written Exam (810)

Pass Fortinet NSE8_810 Exam with 100% Guarantee

Free Download Real Questions & Answers **PDF** and **VCE** file from:

https://www.leads4pass.com/nse8_810.html

100% Passing Guarantee
100% Money Back Assurance

Following Questions and Answers are all new published by Fortinet
Official Exam Center

-  **Instant Download** After Purchase
-  **100% Money Back** Guarantee
-  **365 Days** Free Update
-  **800,000+** Satisfied Customers



QUESTION 1

You are asked to add a FortiDDoS to the network to combat detected slow connection attacks such as Slowloris.

Which prevention mode on FortiDDoS will protect you against this specific type of attack?

- A. aggressive aging mode
- B. rate limiting mode
- C. blocking mode
- D. asymmetric mode

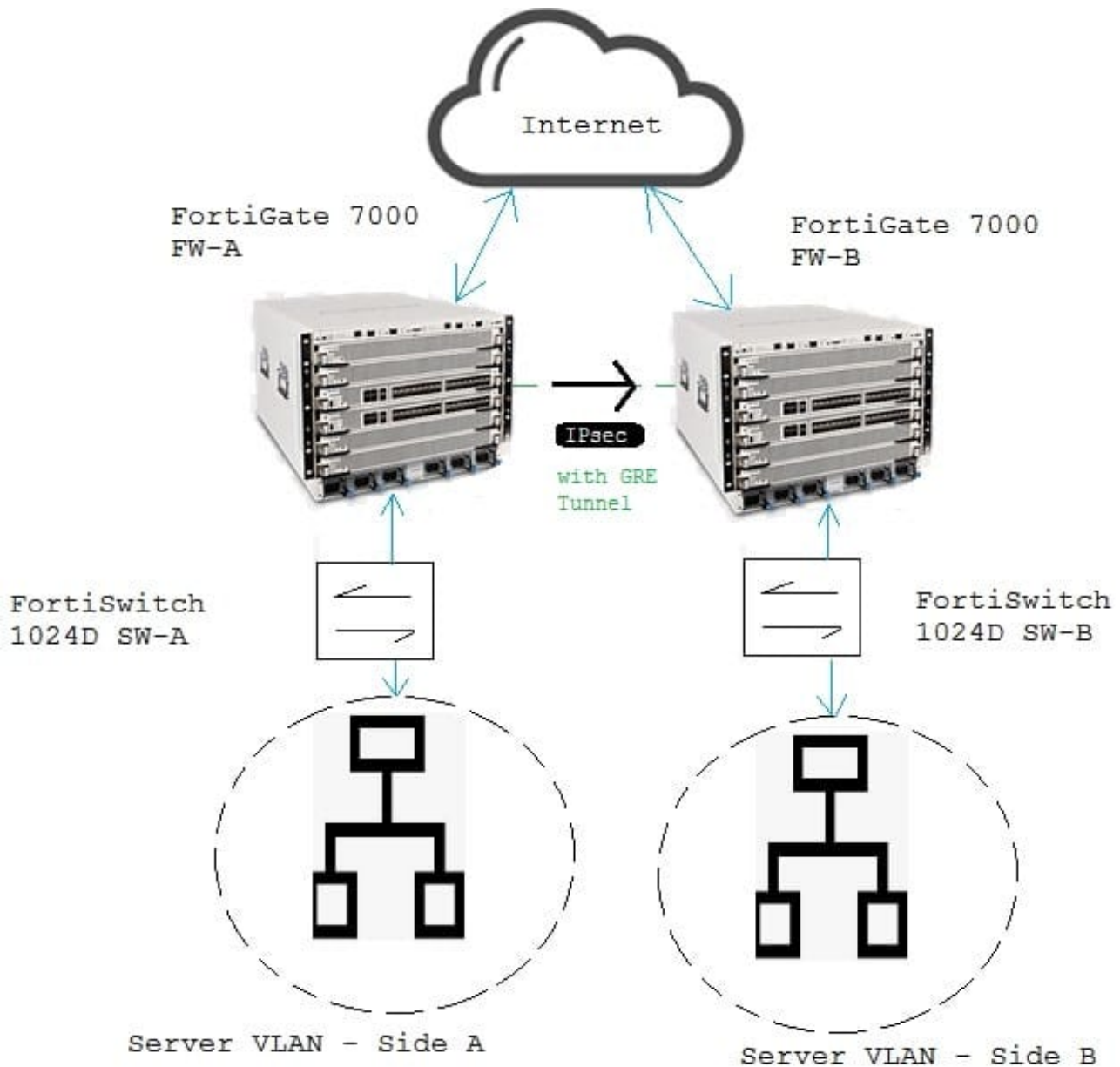
Correct Answer: A

QUESTION 2

Click the Exhibit button.

You have two data centers a FortiGate 7000-series chassis connected by VPN, and all traffic flows over an established generic routing encapsulation (GRE) tunnel between them.

You are troubleshooting traffic that is traversing between Server VLAN A and Server VLAN B. The performance is lower than expected and all traffic is only on the FPM module in slot 3.



Referring to the exhibit, which action will correct the problem?

- A. Referring to the exhibit, which action will correct the problem?
- B. NO course of action enables load balancing in this scenario.
- C. Change the algorithm so it takes IP source IP, destination IP, and port no account.
- D. Configuration a local-balance flow-rule in the CLI to enable load balancing.

Correct Answer: C

QUESTION 3

Click the Exhibit button.

```
config system ha
set mode a-a
set group-id 1
set group-name main
set hb_dev port2 100
set session-pickup enable
end
```

You have configured an HA cluster with two FortiGates. You want to make sure that you are able to manage the individual cluster members directly using port3.

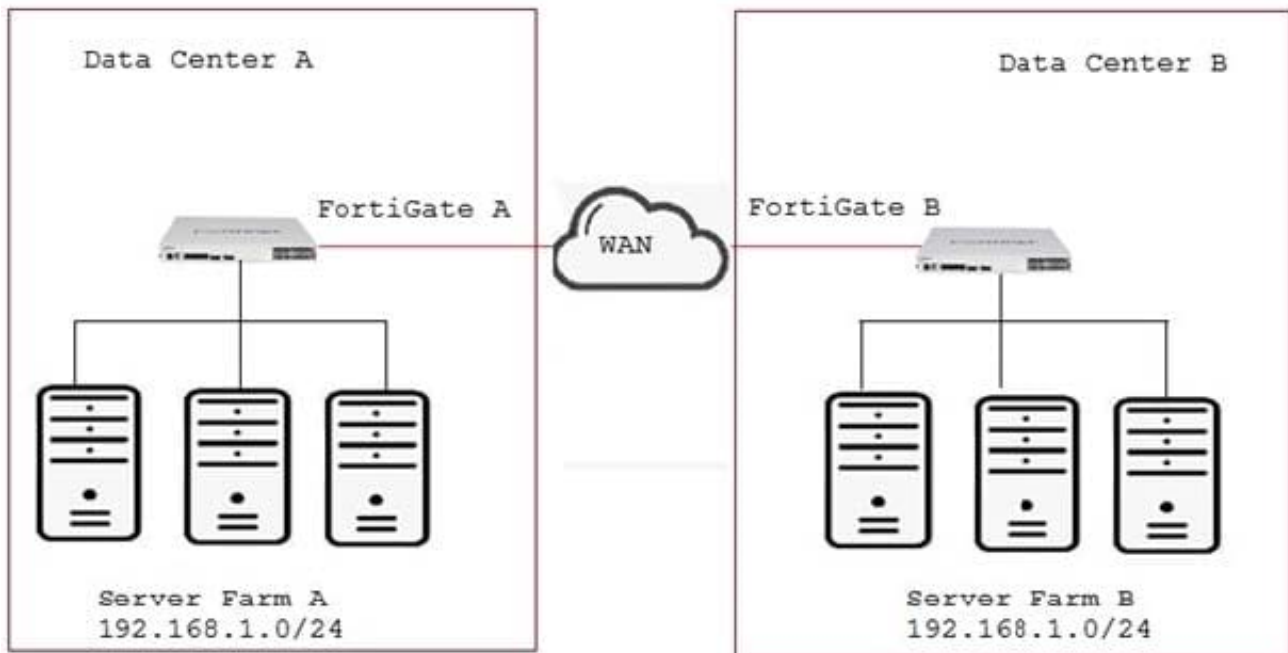
Referring to the exhibit, what are two ways to accomplish this task? (Choose two.)

- A. Disable the sync feature on port3: then configure specific IPs for ports on both cluster members.
- B. Configure port3 to be a dedicated HA management interface, then configure specific IPs for port3 on both cluster members.
- C. Create a management VDOM and Disable the HA synchronization for this VDOM, assign ports to this VDOM, then configure specific IPs for ports on both cluster member.
- D. Allow administrative access in the HA heartbeat interfaces.

Correct Answer: BC

QUESTION 4

Click the Exhibit button.



Your company has two data centers (DC) connected using a Layer 3 network. Servers in farm A need to connect to servers in farm B as though they all were in the same Layer 2 segment. What would be configured on the FortiGates on each DC to allow such connectivity?

- A. Create an IPsec tunnel with transport mode encapsulation.
- B. Create an IPsec tunnel with Mode encapsulation.
- C. Create an IPsec tunnel with VXLAN encapsulation.
- D. Create an IPsec tunnel with VLAN encapsulation.

Correct Answer: C

QUESTION 5

Exhibit Click the Exhibit button. You are trying to configure Link-Aggregation Group (LAG), but ports A and B do not appear on the list of

member options. Referring to the exhibit, which statement is correct in this situation?

Exhibit
X

```

get hardware npu np6 port-list
Chip XAUI Ports Max Cross-chip
          Speed offloading
-----
np6_0 0
      1 port17 1G Yes
      1 port18 1G Yes
      1 port19 1G Yes
      1 port20 1G Yes
      1 port21 1G Yes
      1 port22 1G Yes
      1 port23 1G Yes
      1 port24 1G Yes
      1 port27 1G Yes
      1 port28 1G Yes
      1 port25 1G Yes
      1 port26 1G Yes
      1 port31 1G Yes
      1 port32 1G Yes
      1 port29 1G Yes
      1 port30 1G Yes
      2 portB 10G Yes
      3
-----

np6_1 0
      1 port1 1G Yes
      1 port2 1G Yes
      1 port3 1G Yes
      1 port4 1G Yes
      1 port5 1G Yes
      1 port6 1G Yes
      1 port7 1G Yes
      1 port8 1G Yes
      1 port11 1G Yes
      1 port12 1G Yes
      1 port9 1G Yes
      1 port10 1G Yes
      1 port15 1G Yes
      1 port16 1G Yes
      1 port13 1G Yes
      1 port14 1G Yes
      2 portA 10G Yes
      3
          
```

A. The FortiGate model being used does not support LAG.

- B. The FortiGate model does not have an Integrated Switch Fabric (ISF).
- C. The FortiGate SFP+ slot does not have the correct module.
- D. The FortiGate interfaces are defective and require replacement.

Correct Answer: B

[NSE8_810 PDF Dumps](#)

[NSE8_810 Practice Test](#)

[NSE8_810 Study Guide](#)