

NSE7_SDW-6.4^{Q&As}

Fortinet NSE 7 - SD-WAN 6.4

Pass Fortinet NSE7_SDW-6.4 Exam with 100% Guarantee

Free Download Real Questions & Answers **PDF** and **VCE** file from:

https://www.leads4pass.com/nse7_sdw-6-4.html

100% Passing Guarantee
100% Money Back Assurance

Following Questions and Answers are all new published by Fortinet
Official Exam Center

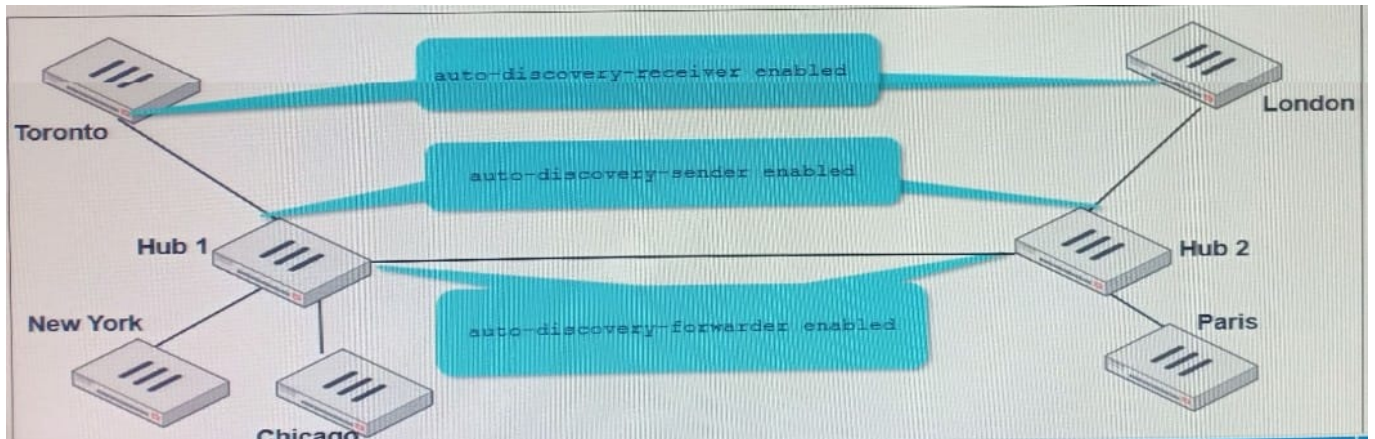
-  **Instant Download** After Purchase
-  **100% Money Back** Guarantee
-  **365 Days** Free Update
-  **800,000+** Satisfied Customers



QUESTION 1

Refer to the exhibit.

Multiple IPsec VPNs are formed between two hub-and-spokes groups, and site-to-site between Hub 1 and Hub 2. The administrator configured ADVPN on the dual regions topology.



Which two statements are correct if a user in Toronto sends traffic to London? (Choose two)

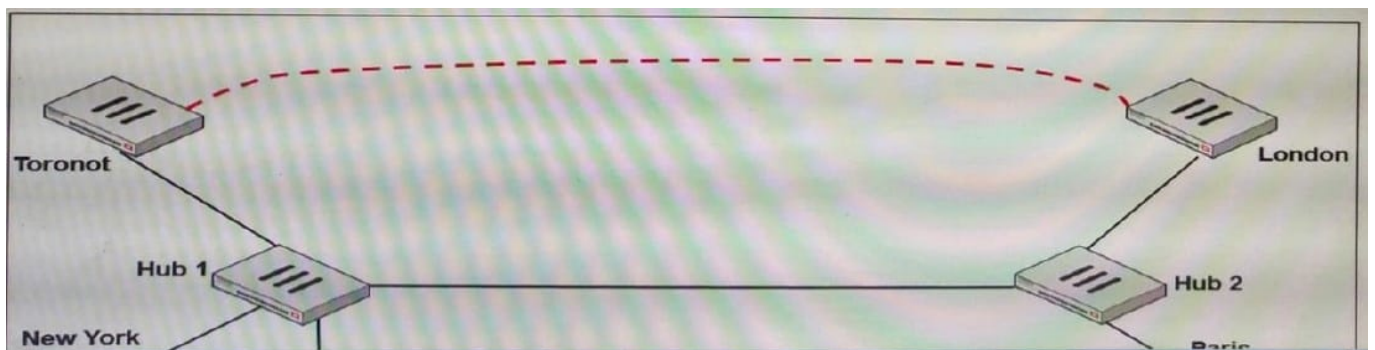
- A. Toronto needs to establish a site-to-site tunnel with Hub 2 to bypass Hub 1.
- B. The first packets from Toronto to London are routed through Hub 1 then to Hub 2.
- C. London generates an IKE information message that contains the Toronto public IP address.
- D. Traffic from Toronto to London triggers the dynamic negotiation of a direct site-to-site VPN.

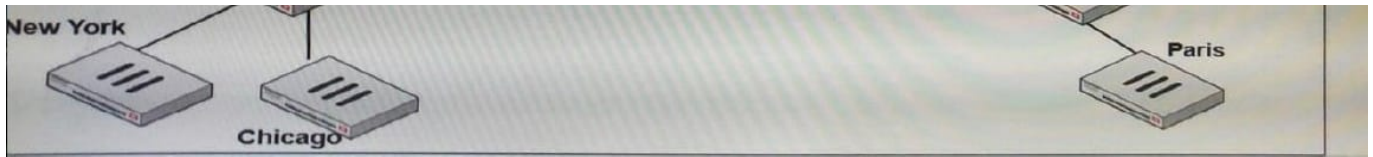
Correct Answer: BD

SD-WAN_6.4_Study_Guide page 207

QUESTION 2

Refer to the exhibit.





Multiple IPsec VPNs are formed between two hub-and-spokes groups, and site-to-site between Hub 1 and Hub 2. The administrator configured ADVPN on the dual regions topology.

Which two statements are correct if a dynamic site-to-site tunnel between Toronto and London has been established? (Choose two)

- A. auto-discovery-receiver is enabled on the egress VPN interfaces on the spokes
- B. auto-discovery-sender is enabled on the ingress VPN interfaces on hubs
- C. tunnel-search IS set to phase 2 quick mode selectors
- D. add-route is enabled to install static routes on hub devices
- E. auto-discovery-forwarder IS enabled on all VPN interfaces

Correct Answer: AB

QUESTION 3

Refer to the exhibit

```
config system settings
set firewall-session-dirty check-new
end
```

Based on the exhibit, which two statements about existing sessions on FortiGate after a firewall policy change, are true? (Choose two.)

- A. The old sessions terminate after a policy change
- B. Existing sessions remain unchanged after a policy change
- C. All sessions are flushed by FortiGate after a policy change
- D. FortiGate re-evaluates new packets after a policy change

Correct Answer: BD

QUESTION 4

Which two configuration tasks are required to use SD-WAN? (Choose two.)

- A. Add one or more members to an SD-WAN zone.

- B. Configure at least one firewall policy for SD-WAN traffic.
- C. Specify the outgoing interface routing cost.
- D. Specify the incoming interfaces in SD-WAN rules.

Correct Answer: AB

QUESTION 5

Which two statements describe how IPsec phase 1 aggressive mode is different from main mode when performing IKE negotiation? (Choose two)

- A. A peer ID is included in the first packet from the initiator, along with suggested security policies.
- B. XAuth is enabled as an additional level of authentication, which requires a username and password.
- C. A total of six packets are exchanged between an initiator and a responder instead of three packets.
- D. The use of Diffie Hellman keys is limited by the responder and needs initiator acceptance.

Correct Answer: BC

[NSE7_SDW-6.4 Practice Test](#)

[NSE7_SDW-6.4 Study Guide](#)

[NSE7_SDW-6.4 Exam Questions](#)