

MS-102^{Q&As}

Microsoft 365 Certified: Enterprise Administrator Expert

Pass Microsoft MS-102 Exam with 100% Guarantee

Free Download Real Questions & Answers **PDF** and **VCE** file from:

<https://www.leads4pass.com/ms-102.html>

100% Passing Guarantee
100% Money Back Assurance

Following Questions and Answers are all new published by Microsoft
Official Exam Center

-  **Instant Download** After Purchase
-  **100% Money Back** Guarantee
-  **365 Days** Free Update
-  **800,000+** Satisfied Customers



QUESTION 1

DRAG DROP

You have a Microsoft 365 E5 tenant that contains 500 Android devices enrolled in Microsoft Intune.

You need to use Microsoft Endpoint Manager to deploy a managed Google Play app to the devices.

Which four actions should you perform in sequence? To answer, move the appropriate actions from the list of actions to the answer area and arrange them in the correct order.

Select and Place:

Actions

Create an app configuration policy

Link the account to Intune

Create a Microsoft account

Configure a mobile device management (MDM) push certificate

Add the app

Create a Google account

Assign the app

Answer Area



Correct Answer:

Actions

Create an app configuration policy

Create a Microsoft account

Configure a mobile device management (MDM) push certificate

Answer Area

Create a Google account

Link the account to Intune

Add the app

Assign the app



QUESTION 2

HOTSPOT

Your network contains an Active Directory domain named fabrikam.com. The domain contains the objects shown in the following table.

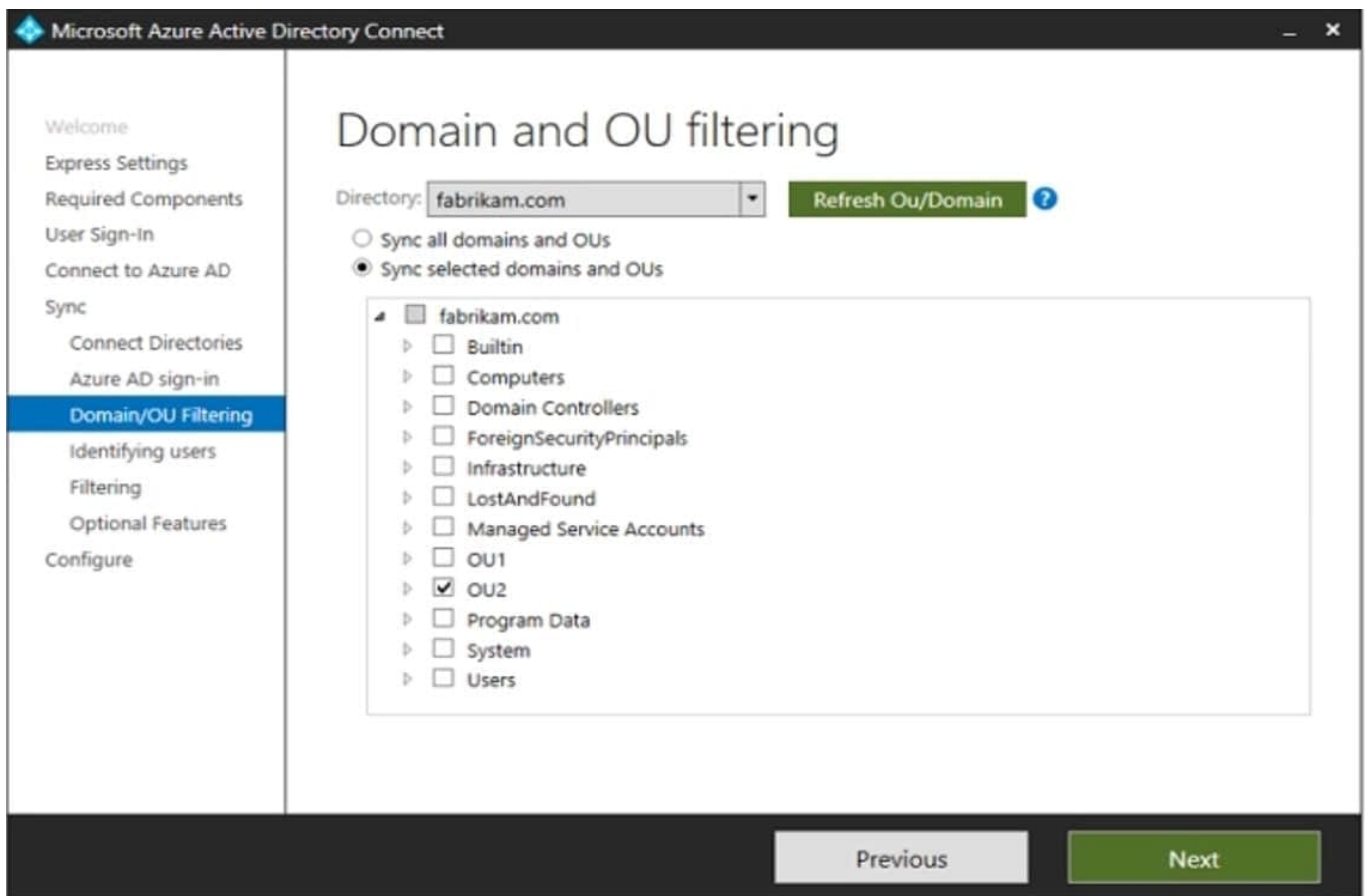
Name	Type	In organizational unit (OU)
User1	User	OU1
User2	User	OU1
Group1	Security Group - Global	OU1
User3	User	OU2
Group2	Security Group - Global	OU2

The groups have the members shown in the following table.

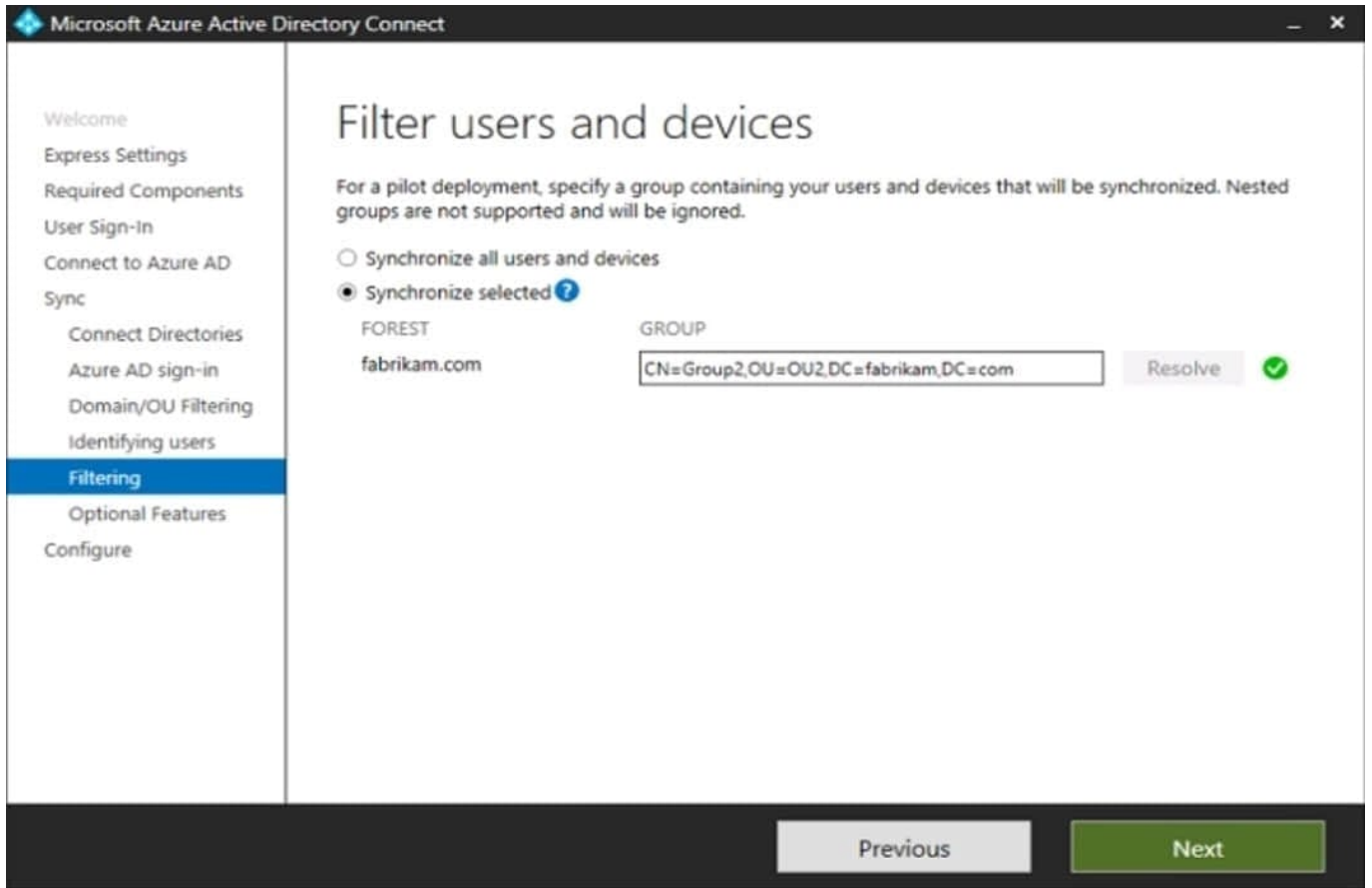
Group	Members
Group1	User1
Group2	User2, User3, Group1

You are configuring synchronization between fabrikam.com and an Azure AD tenant.

You configure the Domain/OU Filtering settings in Azure AD Connect as shown in the Domain/OU Filtering exhibit (Click the Domain/OU Filtering tab.)



You configure the Filtering settings in Azure AD Connect as shown in the Filtering exhibit. (Click the Filtering tab.)



For each of the following statements, select Yes if the statement is true. Otherwise, select No. NOTE: Each correct selection is worth one point.

Hot Area:

Answer Area

Statements

Yes

No

User2 will synchronize to Azure AD.

Group2 will synchronize to Azure AD.

User3 will synchronize to Azure AD.

Correct Answer:

Answer Area

Statements

Yes

No

User2 will synchronize to Azure AD.

Group2 will synchronize to Azure AD.

User3 will synchronize to Azure AD.

QUESTION 3

HOTSPOT

You have a Microsoft 365 E5 subscription that contains the devices shown in the following table.

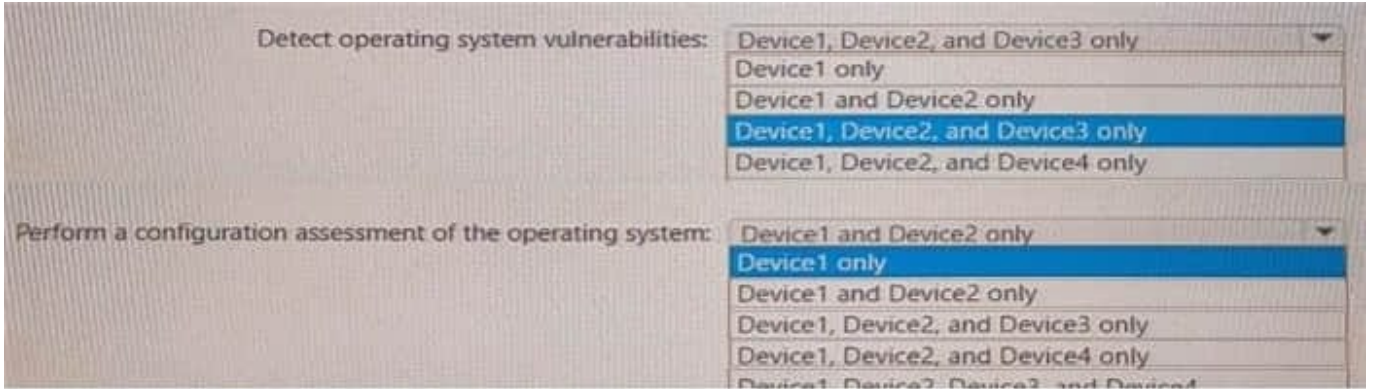
Name	Platform
Device1	Windows 11
Device2	Windows 10
Device3	Android
Device4	iOS

All the devices are onboarded To Microsoft Defender for Endpoint

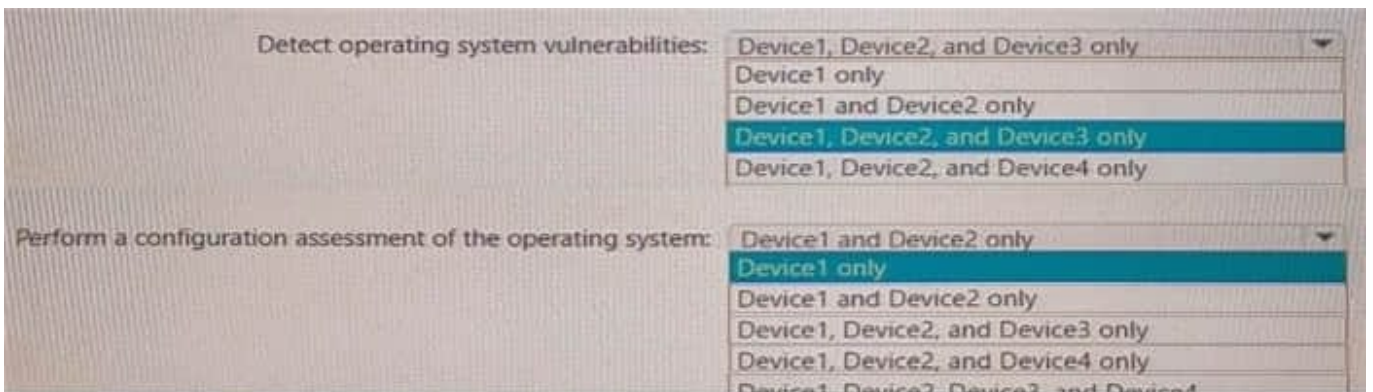
You plan to use Microsoft Defender Vulnerability Management to meet the following requirements:

Detect operating system vulnerabilities.

Hot Area:



Correct Answer:



QUESTION 4

You need to meet the technical requirements and planned changes for Intune. What should you do? To answer, select the appropriate options in the answer area. NOTE: Each correct selection is worth one point.

Hot Area:

Settings to configure in Azure AD:

Device settings	
Mobility (MDM and MAM)	
Organizational relationships	
User settings	

Settings to configure in Intune:

Device compliance	
Device configuration	
Device enrollment	
Mobile Device Management Authority	

Correct Answer:

Settings to configure in Azure AD:

Device settings	
Mobility (MDM and MAM)	
Organizational relationships	
User settings	

Settings to configure in Intune:

Device compliance	
Device configuration	
Device enrollment	
Mobile Device Management Authority	

QUESTION 5

Your network contains an on-premises Active Directory domain named contoso.com. The domain contains the users shown in the following table.

Name	UPN suffix
User1	Contoso.com
User2	Fabrikam.com

The domain syncs to an Azure AD tenant named contoso.com as shown in the exhibit. (Click the Exhibit tab.)

PROVISION FROM ACTIVE DIRECTORY



Azure AD Connect cloud provisioning

This feature allows you to manage provisioning from the cloud.

[Manage provisioning \(Preview\)](#)

Azure AD Connect sync

Sync Status	Enabled
Last Sync	Less than 1 hour ago
Password Hash Sync	Enabled

USER SIGN-IN



Federation	Disabled	0 domains
Seamless single sign-on	Enabled	1 domain
Pass-through authentication	Enabled	2 agents

User2 fails to authenticate to Azure AD when signing in as user2@fabrikam.com.

You need to ensure that User2 can access the resources in Azure AD.

Solution: From the on-premises Active Directory domain, you set the UPN suffix for User2 to @contoso.com. You instruct User2 to sign in as user2@contoso.com.

Does this meet the goal?

- A. Yes
- B. No

Correct Answer: A

The on-premises Active Directory domain is named contoso.com. You can enable users to sign on using a different UPN (different domain), by adding the domain to Microsoft 365 as a custom domain. Alternatively, you can configure the user account to use the existing domain (contoso.com).

[Latest MS-102 Dumps](#)

[MS-102 VCE Dumps](#)

[MS-102 Study Guide](#)