

MD-101^{Q&As}

Managing Modern Desktops

Pass Microsoft MD-101 Exam with 100% Guarantee

Free Download Real Questions & Answers **PDF** and **VCE** file from:

<https://www.leads4pass.com/md-101.html>

100% Passing Guarantee
100% Money Back Assurance

Following Questions and Answers are all new published by Microsoft
Official Exam Center

- ⚙ **Instant Download** After Purchase
- ⚙ **100% Money Back** Guarantee
- ⚙ **365 Days** Free Update
- ⚙ **800,000+** Satisfied Customers



QUESTION 1

You have a Microsoft 365 E5 subscription that contains a user named User1 and the devices shown in the following table.

Name	Operating system	Azure AD status
Device1	Windows 11	Joined
Device2	Windows 10	Joined

User1 can access her Microsoft Exchange Online mailbox from both Device 1 and Device2.

You plan to create a Conditional Access policy named CAPolicy1 that will have the following settings:

1.

Assignments

2.

Users or workload identities: User1

3.

Cloud apps or actions: Office 365 Exchange Online

4.

Access controls

5.

Grant: Block access

You need to configure CAPolicy1 to allow mailbox access from Device 1 but block mailbox access from Device2.

Solution: You add a condition that specifies a trusted locations.

Does this meet the goal?

A. Yes

B. No

Correct Answer: B

Instead use solution: You add a condition to filter for devices.

Note: Conditional Access: Filter for devices

When creating Conditional Access policies, administrators have asked for the ability to target or exclude specific devices in their environment. The condition filter for devices gives administrators this capability. Now you can target specific

devices using supported operators and properties for device filters and the other available assignment conditions in your Conditional Access policies.

Reference: <https://learn.microsoft.com/en-us/azure/active-directory/conditional-access/concept-condition-filters-for-devices>

QUESTION 2

Your network contains an Active Directory domain. The domain contains computers that run Windows 8.1 and the users shown in the following table.

Name	Domain group membership	Local group membership
User1	Domain Users, Domain Admins	Administrators
User2	Domain Users, Remote Management Users	Users
User3	Domain Users	Administrators
User4	Domain Users	Remote Management Users

You plan to use the Microsoft Assessment and Planning (MAP) Toolkit to collect inventory data. The MAP Toolkit has the following configurations:

1.

Inventory scenario: Windows computers

2.

Discovery method: Use Active Directory Domain Services (AD DS)

You need to identify which user to use for the MAP Toolkit inventory discovery. The solution must use principle of least privilege.

What should you identify?

A. User3

B. User1

C. User4

D. User2

Correct Answer: A

Discovery method: Use Active Directory Domain Services (AD DS)

Credentials required " The wizard requires a domain account that is to be used to query AD DS. At a minimum, this account should be a member of the Domain

Users group in the domain. For each computer to be included in the WMI inventory process, the wizard also requires an account that is a member of the local

Administrators group on that computer.

Reference:

<https://social.technet.microsoft.com/wiki/contents/articles/17808.map-toolkit-choose-a-discovery-method.aspx>

QUESTION 3

You have a Microsoft Office 365 E1 subscription.

You plan to create Conditional Access policies.

You need to ensure that users have the required licenses. The solution must minimize costs.

Which type of license should you assign to each user?

- A. Microsoft Intune
- B. Azure Active Directory Premium Plan 1
- C. Office 365 E3
- D. Windows 365 Business

Correct Answer: C

QUESTION 4**HOTSPOT**

You are licensed for Microsoft Endpoint Manager.

You use Microsoft Endpoint Configuration Manager and Microsoft Intune.

You have devices enrolled in Configuration Manager as shown in the following table.

Name	Collection
Device1	Collection1
Device2	Collection2
Device3	Collection1, Collection2

In Configuration Manager, you enable co-management and configure the following settings:

1.

Automatic enrolment in Intune: Pilot

2.

Intune Auto Enrollment: Collection1

In Configuration Manager, you configure co-management staging to have the following settings:

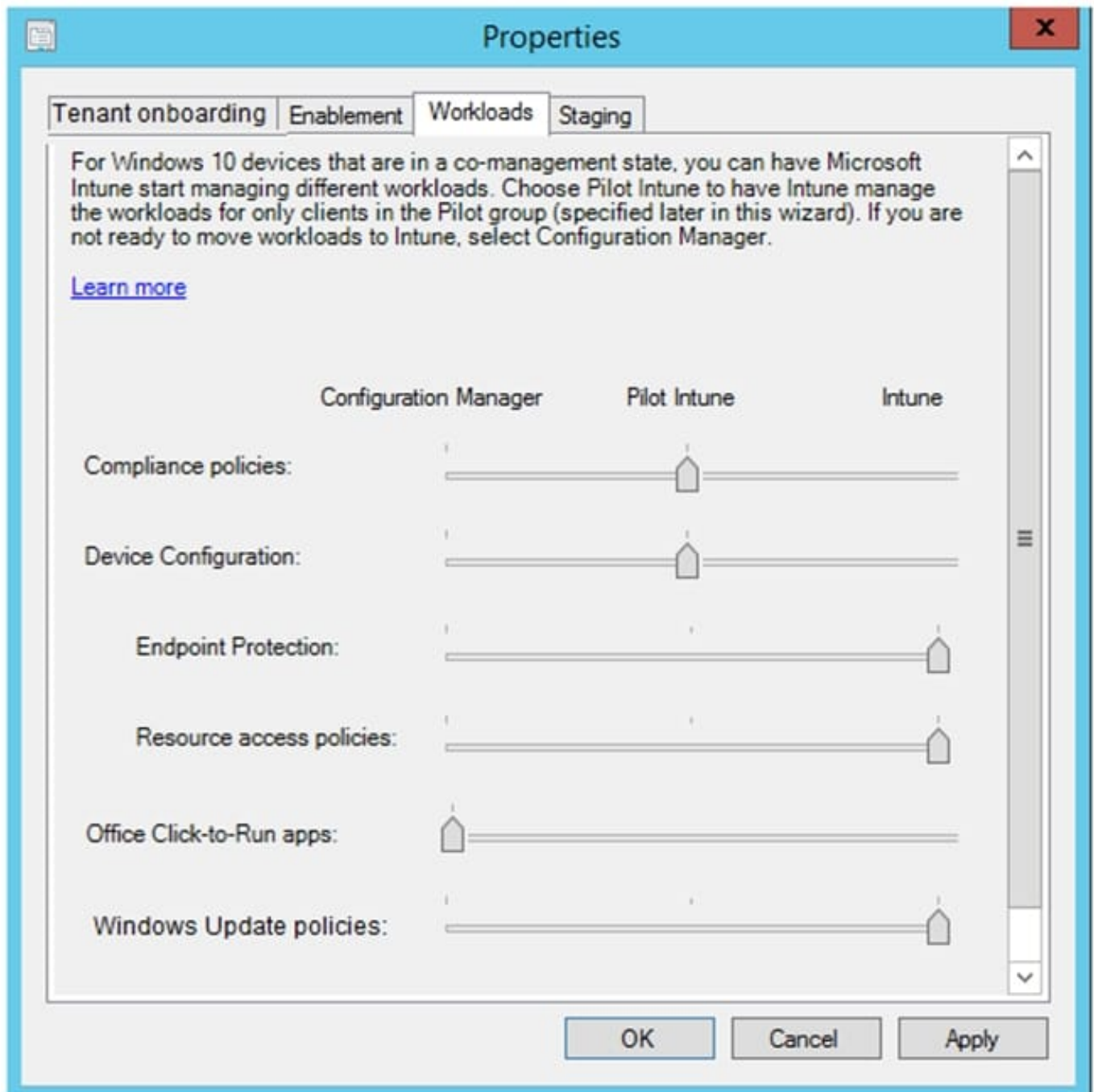
1.

Compliance policies: Collection2

2.

Device Configuration: Collection1

In Configuration Manager, you configure co-management workloads as shown in the following exhibit.



For each of the following statements, select Yes if the statement is true. Otherwise, select No.

Hot Area:

Statements	Yes	No
You can use the Microsoft Endpoint Manager admin center to monitor the compliance status of Device1.	<input type="radio"/>	<input type="radio"/>
You can use the Microsoft Endpoint Manager admin center to monitor the compliance status of Device2.	<input type="radio"/>	<input type="radio"/>
You can use the Microsoft Endpoint Manager admin center to monitor the compliance status of Device3.	<input type="radio"/>	<input type="radio"/>

Correct Answer:

Statements	Yes	No
You can use the Microsoft Endpoint Manager admin center to monitor the compliance status of Device1.	<input type="radio"/>	<input checked="" type="radio"/>
You can use the Microsoft Endpoint Manager admin center to monitor the compliance status of Device2.	<input checked="" type="radio"/>	<input type="radio"/>
You can use the Microsoft Endpoint Manager admin center to monitor the compliance status of Device3.	<input checked="" type="radio"/>	<input type="radio"/>

Box 1: No The Pilot Group does not include Device1.

Box 2: Yes

Box 3: Yes The Pilot Group includes Device3.

Reference:

<https://docs.microsoft.com/en-us/mem/configmgr/comanage/how-to-enable>

QUESTION 5

HOTSPOT

Your company uses Microsoft Intune to manage Windows 10, Android, and iOS devices.

Several users purchase new iPads and Android devices.

You need to tell the users how to enroll their device in Intune.

What should you instruct the users to use for each device? To answer, select the appropriate options in the answer

area.

NOTE: Each correct selection is worth one point.

Hot Area:

Answer Area

Android device

	▼
https://myapps.microsoft.com	
https://portal.manage.microsoft.com	
The Intune Company Portal app	
The Settings app	

iPad

	▼
https://myapps.microsoft.com	
https://portal.manage.microsoft.com	
The Intune Company Portal app	
The Settings app	

Correct Answer:

Answer Area

Android device

	▼
https://myapps.microsoft.com	
https://portal.manage.microsoft.com	
The Intune Company Portal app	
The Settings app	

iPad

	▼
https://myapps.microsoft.com	
https://portal.manage.microsoft.com	
The Intune Company Portal app	
The Settings app	

The Intune Company Portal app is used to enroll Android, iOS, macOS, and Windows devices

Reference: <https://docs.microsoft.com/en-us/intune-user-help/enroll-device-android-company-portal>
<https://docs.microsoft.com/en-us/intune-user-help/enroll-your-device-in-intune-ios> <https://docs.microsoft.com/en-us/intune-user-help/enroll-your-device-in-intune-macos-cp>

[Latest MD-101 Dumps](#)

[MD-101 Study Guide](#)

[MD-101 Exam Questions](#)