

MD-100^{Q&As}

Windows Client

Pass Microsoft MD-100 Exam with 100% Guarantee

Free Download Real Questions & Answers **PDF** and **VCE** file from:

<https://www.leads4pass.com/md-100.html>

100% Passing Guarantee
100% Money Back Assurance

Following Questions and Answers are all new published by Microsoft
Official Exam Center

-  **Instant Download** After Purchase
-  **100% Money Back** Guarantee
-  **365 Days** Free Update
-  **800,000+** Satisfied Customers



QUESTION 1

Note: This question is part of a series of questions that present the same scenario. Each question in the series contains a unique solution that might meet the stated goals. Some question sets might have more than one correct solution, while

others might not have a correct solution.

After you answer a question in this section, you will NOT be able to return to it. As a result, these questions will not appear in the review screen.

You manage devices that run Windows 10.

Ten sales users will travel to a location that has limited bandwidth that is expensive. The sales users will be at the location for three weeks.

You need to prevent all Windows updates from downloading for the duration of the trip. The solution must not prevent access to email and the Internet.

Solution: From Network and Internet in the Settings app, you set the network connections as metered connections.

Does this meet the goal?

A. Yes

B. No

Correct Answer: B

<https://www.makeuseof.com/tag/5-ways-temporarily-turn-off-windows-update-windows-10/>

QUESTION 2

HOTSPOT

You have a computer named Computer1 that runs Windows 10. Computer1 has an IP address of 10.10.1.200 and a subnet mask of 255.255.255.0. You configure the proxy settings on Computer1 as shown in the following exhibit.

Manual proxy setup

Use a proxy server for Ethernet or Wi-Fi connections. These settings don't apply to VPN connections.

Use a proxy server



Address	Port
http://proxy.contoso.com	8080

Use the proxy server except for addresses that start with the following entries. Use semicolons (;) to separate entries.

*.contoso.com; *.microsoft.com;192.168.1.25;*.azure.com
--

Don't use the proxy server for local (intranet) addresses



Use the drop-down menus to select the answer choice that completes each statement based on the information presented in the graphic. NOTE: Each correct selection is worth one point.

Hot Area:

Answer Area

Connection attempts to www.contoso.com will [answer choice].

	▼
bypass the proxy only when using Microsoft Edge	
use the proxy only when using Microsoft Edge	
bypass the proxy for all applications	
use the proxy for all applications	

If Computer1 attempts to connect to [answer choice] from Microsoft Edge, the proxy will be bypassed.

	▼
https://10.10.0.100	
https://store.microsoft.com	
ftp://192.168.1.10	

Correct Answer:

Answer Area

Connection attempts to www.contoso.com will [answer choice].

	▼
bypass the proxy only when using Microsoft Edge	
use the proxy only when using Microsoft Edge	
bypass the proxy for all applications	
use the proxy for all applications	

If Computer1 attempts to connect to [answer choice] from Microsoft Edge, the proxy will be bypassed.

	▼
https://10.10.0.100	
https://store.microsoft.com	
ftp://192.168.1.10	

References: <https://www.howtogeek.com/tips/how-to-set-your-proxy-settings-in-windows-8.1/>

QUESTION 3

DRAG DROP

You have a computer named Computer1 that runs Windows 7. Computer1 has a local user named User1 who has a customized profile.

On Computer1, you perform a clean installation of Windows 10 without formatting the drives.

You need to migrate the settings of User1 from Windows7 to Windows 10.

Which two actions should you perform? To answer, drag the appropriate actions to the correct targets. Each action may be used once, more than once, or not at all. You may need to drag the split bar between panes or scroll to view content.

NOTE: Each correct selection is worth one point.

Select and Place:

Actions

Run scanstate.exe and specify the C:\Users subfolder.

Run loadstate.exe and specify the C:\Users subfolder.

Run scanstate.exe and specify the C:\Windows.old subfolder.

Run loadstate.exe and specify the C:\Windows.old subfolder.

Run usmutils.exe and specify the C:\Users subfolder.

Run usmutils.exe and specify the C:\Windows.old subfolder.

Answer Area

First action:

Action

Second action:

Action

Correct Answer:

Actions

Run scanstate.exe and specify the C:\Windows.old subfolder.

Run loadstate.exe and specify the C:\Windows.old subfolder.

Run usmutils.exe and specify the C:\Users subfolder.

Run usmutils.exe and specify the C:\Windows.old subfolder.

Answer Area

First action:

Run scanstate.exe and specify the C:\Users subfolder.

Second action:

Run loadstate.exe and specify the C:\Users subfolder.

The User State Migration Tool (USMT) includes two tools that migrate settings and data: ScanState and LoadState. ScanState collects information from the source computer, and LoadState applies that information to the destination computer. In this case the source and destination will be the same computer.

As we have performed a clean installation of Windows 10 without formatting the drives, User1's customized Windows 8.1 user profile will be located in the \Windows.old folder. Therefore, we need to run scanstate.exe on the \Windows.old folder.

User1's Windows 10 profile will be in the C:\Users folder so we need to run loadstate.exe to apply the changes in the C:\Users folder.

Reference:

<https://docs.microsoft.com/en-us/windows/deployment/usmt/offline-migration-reference>

<https://docs.microsoft.com/en-us/windows/deployment/usmt/usmt-how-it-works>

<https://docs.microsoft.com/en-us/windows/deployment/usmt/usmt-common-migration-scenarios#bkmk-fourpcrefresh>

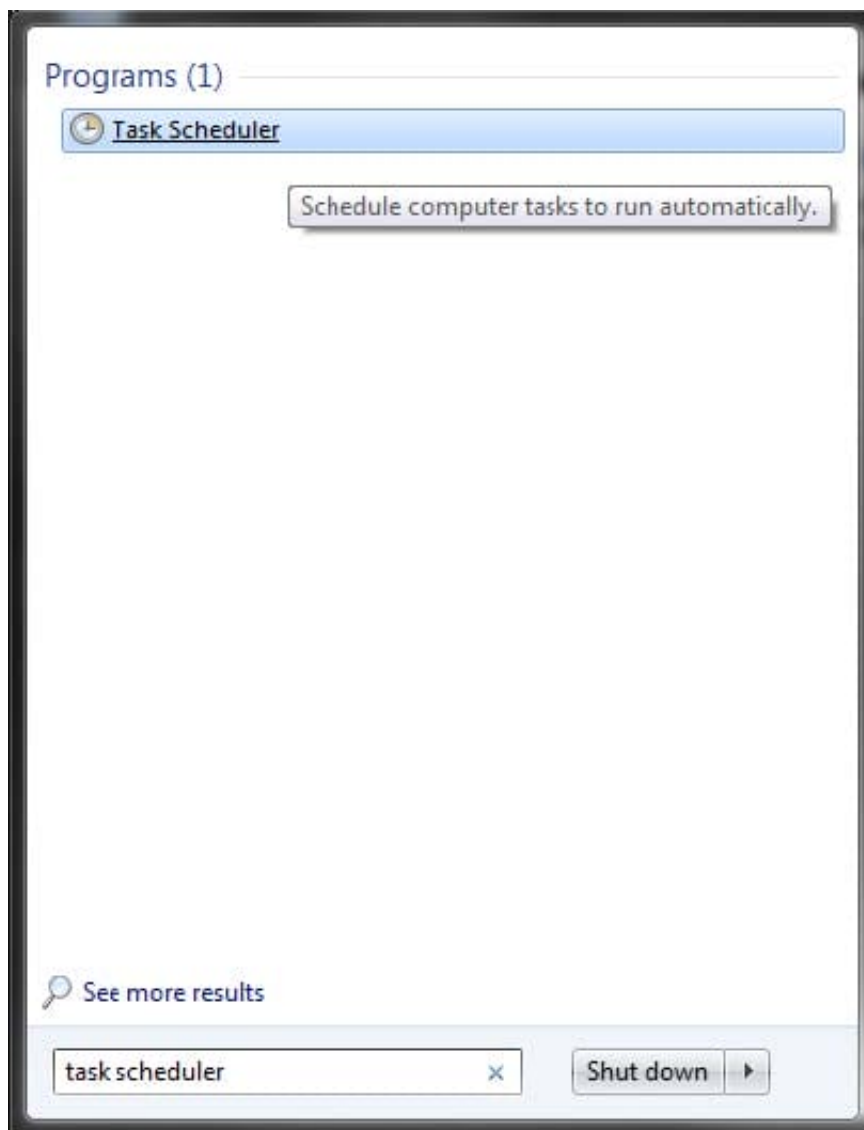
QUESTION 4

You need to ensure that C:\Scripts\Configure.ps1 runs every time a user sign in to Client2.

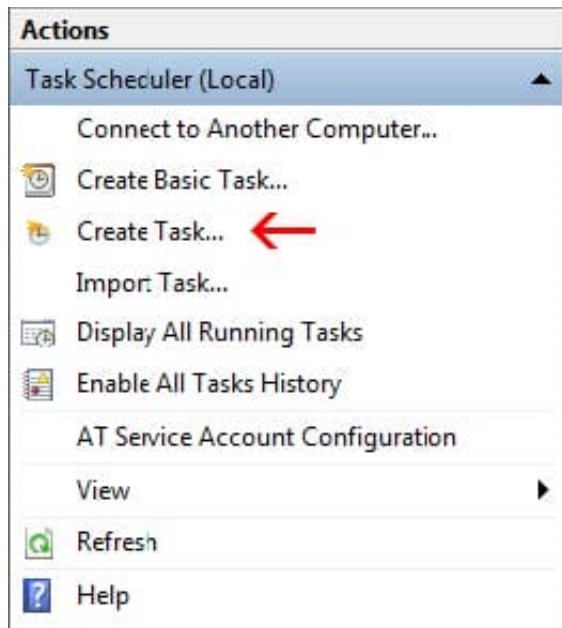
To complete this task, sign in to the required computer or computers.

Correct Answer: See explanation below.

Go to the Start menu, type "Task Scheduler" and select it from the search results.



Task Scheduler can also be accessed in the Control Panel under Administrative Tools. In the right side of the Task Scheduler menu, under Actions, select "Create Task."



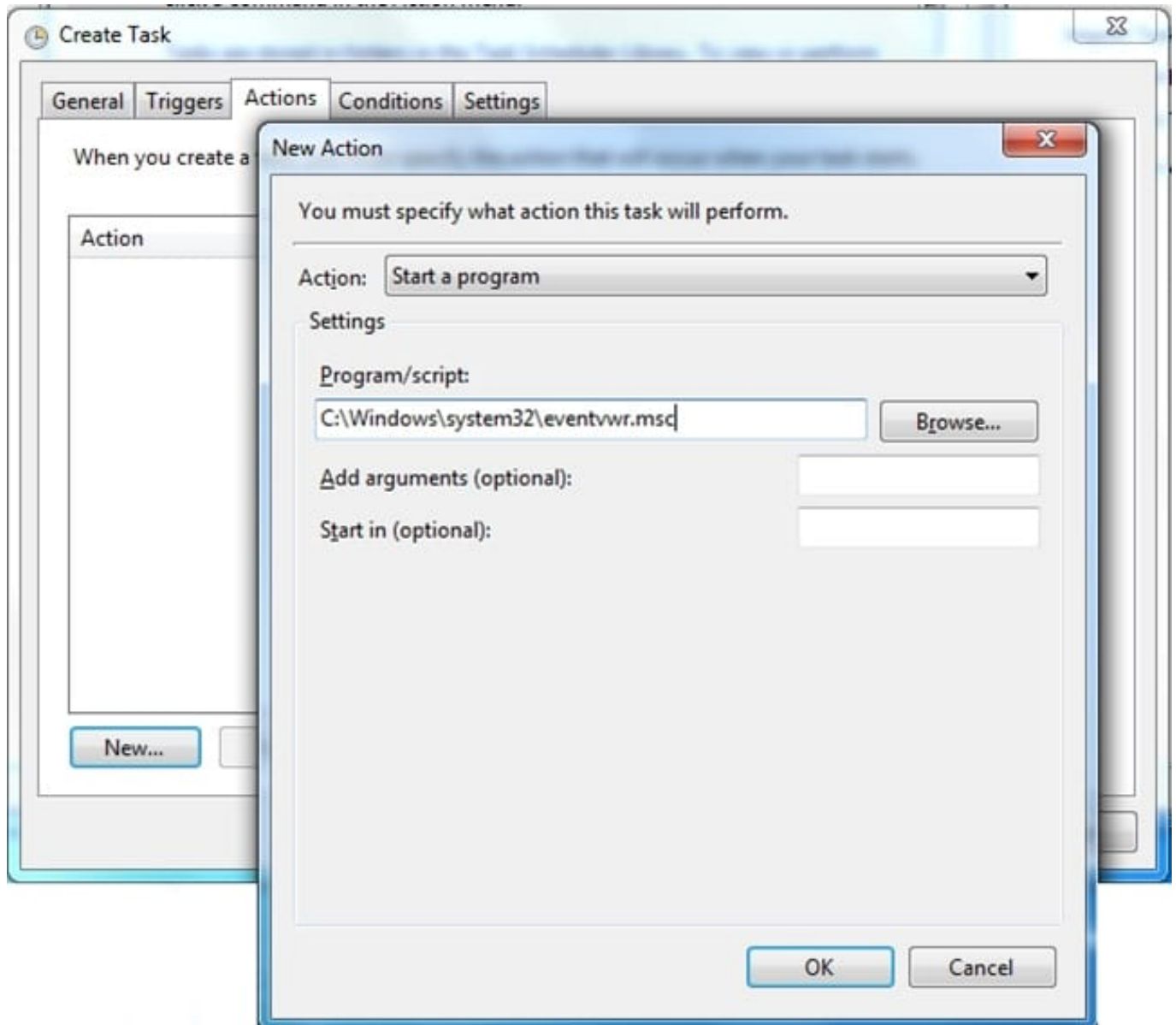
On the General tab, enter a name and description for the task you're creating. Check the box "Run with highest privileges."

Once you have filled out a name and description, click the "Triggers" tab, and then click "New."

In this menu, under "Begin the task:" select "At log on." Choose which user you would like the task to run for at log on. For our purposes, Any user.

Configure any of the applicable advanced settings you would like.

After you are finished configuring the new trigger, click OK and then select the "Actions" tab. Click "New" to make a new action.



Choose "Start a program" under the Action menu and then click "Browse" to point to C:\Scripts\Configure.ps1.

Click OK to exit out of the Actions menu. The "Conditions" and "Settings" tabs can be left alone.

Click OK on the Create Task menu, and you are finished.

Reference:

<https://www.howtogeek.com/138159/how-to-enable-programs-and-custom-scripts-to-run-at-boot/>

QUESTION 5

Your network contains an Active Directory domain. All users have been issued with new computers that run Windows 10 Enterprise. All users have Microsoft 365 E3 licenses.

A user named Mia Hamm has an Active Directory user account named MHam and a computer named Computer1.

Mia Hamm reports that Computer1 is not activated.

You need to ensure that Mia Hamm can activate Computer1.

What should you do?

- A. Assign a Windows 10 Enterprise license to MHamm, and then activate Computer1.
- B. From the Microsoft Deployment Toolkit (MDT), redeploy Computer1.
- C. From System Properties on Computer1, enter a Volume License Key, and then activate Computer1.
- D. Instruct Mia Hamm to perform a local AutoPilot Reset on Computer1, and then activate Computer1.

Correct Answer: C

[Latest MD-100 Dumps](#)

[MD-100 PDF Dumps](#)

[MD-100 VCE Dumps](#)