

## MB-500<sup>Q&As</sup>

Microsoft Dynamics 365 Finance and Operations Apps Developer

### Pass Microsoft MB-500 Exam with 100% Guarantee

Free Download Real Questions & Answers **PDF** and **VCE** file from:

<https://www.leads4pass.com/mb-500.html>

100% Passing Guarantee  
100% Money Back Assurance

Following Questions and Answers are all new published by Microsoft  
Official Exam Center

- ⚙️ **Instant Download** After Purchase
- ⚙️ **100% Money Back** Guarantee
- ⚙️ **365 Days** Free Update
- ⚙️ **800,000+** Satisfied Customers



## QUESTION 1

You are a Dynamics 365 Supply chain Management developer. Several users check out a custom form version control and modify the form. You need to find the user that has added a specific line of code to the form. What should you do?

- A. In Solution Explorer, navigate to the object and right-click View History.
- B. Using Visual Studio, navigate to the object. Add the object to a new solution, and then right-click View History.
- C. Open the object in Object Designer, select the title of the object, and then right-click View History.
- D. Using Visual Studio, navigate Application Explorer and right-click View History.

Correct Answer: B

Reference: <https://dynamicsuser.net/ax/f/developers/93354/how-to-rollback-a-change-set-completelyautomatically-in-tfs>

---

## QUESTION 2

You create a new class.

Class compilation must fail if a specific method in the source code is called.

You need to mark the class with the appropriate attribute.

Which attribute should you use?

- A. SysAppSecurityAttribute
- B. SysTestCategory
- C. SysObsoleteAttribute
- D. SysAttribute

Correct Answer: C

Reference: <https://docs.microsoft.com/en-us/dynamicsax-2012/developer/overview-of-attribute-classes>

---

## QUESTION 3

You have a table in which multiple properties must be changed. Multiple table properties are locked down at the base table and must not be overwritten.

You need to modify the table properties by extending the table.

Which table property can you populate in a table extension by using the property sheet?

- A. Configuration key

B. Save data per company

C. Created by

D. Clustered index

Correct Answer: C

You can now modify the following properties through the property sheet:

\*

Created By

\*

Created Date Time

\*

Modified By

\*

Modified Date Time

\*

Country Region Codes

Note: There are multiple versions of this question with different correct answers and various combinations of incorrect answers. Other incorrect answers you may see in the exam include:

\*

Save data per company

\*

Clustered index

\*

Cache lookup

\*

Primary Index

\*

Configuration Key

\*

Table Group

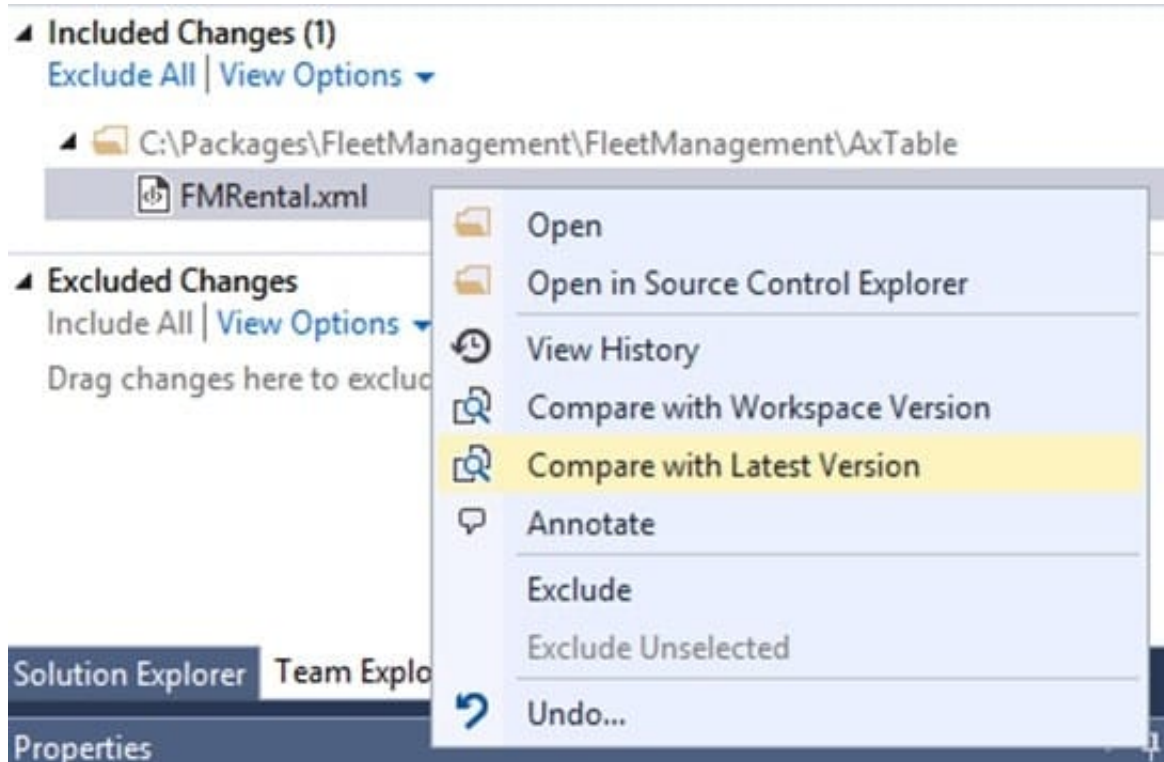
Reference: <https://docs.microsoft.com/en-us/dynamics365/fin-ops-core/dev-itpro/extensibility/modify-properties>

#### QUESTION 4

You have an enumeration named truckStatus that has the following statuses:

1. Empty
2. Loaded
3. Completed

You have the following code:



You need to extend this enumeration and add the following statuses to the enumeration:

Quarantine, InTransit. You must then modify code that validates the switch statement.

Solution: Add a post handler to the method that checks the enumeration and logic for your new enumeration values using the integer value of the enumeration.

```
switch (truckTable.TruckStatus)
{
    case TruckStatus::Empty:
        Info("1");
        break;
    case TruckStatus::Loaded:
        Info("2");
        break;
    case TruckStatus::Completed:
        Info("3");
        break;
}
```

Does the solution meet the goal?

A. Yes

B. No

Correct Answer: B

---

## QUESTION 5

### HOTSPOT

You need to implement the integration for the Vendor Exclusion List form.

What should you do? To answer, select the appropriate options in the answer area.

NOTE: Each correct selection is worth one point.

Hot Area:

**Answer Area**

Element	Option					
Element to add to project	<table border="1"> <tr><td style="text-align: right;">▼</td></tr> <tr><td>Table extension</td></tr> <tr><td>Data Entity</td></tr> <tr><td>View</td></tr> <tr><td>Query</td></tr> </table>	▼	Table extension	Data Entity	View	Query
▼						
Table extension						
Data Entity						
View						
Query						
Key type to create	<table border="1"> <tr><td style="text-align: right;">▼</td></tr> <tr><td>Unique key</td></tr> <tr><td>Foreign key</td></tr> </table>	▼	Unique key	Foreign key		
▼						
Unique key						
Foreign key						
Action to perform	<table border="1"> <tr><td style="text-align: right;">▼</td></tr> <tr><td>Build the project.</td></tr> <tr><td>Build and synchronize the database.</td></tr> <tr><td>Build the solution.</td></tr> </table>	▼	Build the project.	Build and synchronize the database.	Build the solution.	
▼						
Build the project.						
Build and synchronize the database.						
Build the solution.						

Correct Answer:

**Answer Area**

Element	Option					
Element to add to project	<table border="1"> <tr><td style="text-align: right;">▼</td></tr> <tr style="background-color: #e0f2f1;"><td>Table extension</td></tr> <tr><td>Data Entity</td></tr> <tr><td>View</td></tr> <tr><td>Query</td></tr> </table>	▼	Table extension	Data Entity	View	Query
▼						
Table extension						
Data Entity						
View						
Query						
Key type to create	<table border="1"> <tr><td style="text-align: right;">▼</td></tr> <tr style="background-color: #e0f2f1;"><td>Unique key</td></tr> <tr><td>Foreign key</td></tr> </table>	▼	Unique key	Foreign key		
▼						
Unique key						
Foreign key						
Action to perform	<table border="1"> <tr><td style="text-align: right;">▼</td></tr> <tr><td>Build the project.</td></tr> <tr style="background-color: #e0f2f1;"><td>Build and synchronize the database.</td></tr> <tr><td>Build the solution.</td></tr> </table>	▼	Build the project.	Build and synchronize the database.	Build the solution.	
▼						
Build the project.						
Build and synchronize the database.						
Build the solution.						

## Box 1: Table extension

Isolate all new vendor exclusion codes as a new assembly by creating a table named VendExclusions.

Implement the Excel integration for the Vendor Exclusion List form.

The table extension object allows you to add additional fields or to change some properties on a table provided by the Dynamics 365 Business Central service. In this way, you can add data to the same table and treat it as a single table.

## Box 2: Unique key

Create an index for the table named PrimaryIdx that uses the following fields: CustAccount, ItemId, VendAccount.

## Box 3: Build and synchronize the database.

A project property lets you specify that the synchronize operation for the database should be performed every time that you build the project. This can be useful when you're making changes to the table structure for an application. Each time

that you build, you will know that the database is synchronized with the tables as they are defined in the project.

Reference:

<https://docs.microsoft.com/en-us/dynamics365/business-central/dev-itpro/developer/devenv-table-ext-object>

<https://docs.microsoft.com/en-us/dynamics365/fin-ops-core/dev-itpro/dev-tools/build-operations#synchronizing-the-database-at-each-build>

[MB-500 VCE Dumps](#)

[MB-500 Practice Test](#)

[MB-500 Exam Questions](#)