

## JPR-934<sup>Q&As</sup>

Security, Expert (JNCIE-SEC)

### Pass Juniper JPR-934 Exam with 100% Guarantee

Free Download Real Questions & Answers **PDF** and **VCE** file from:

<https://www.leads4pass.com/jpr-934.html>

100% Passing Guarantee  
100% Money Back Assurance

Following Questions and Answers are all new published by Juniper  
Official Exam Center

-  **Instant Download** After Purchase
-  **100% Money Back** Guarantee
-  **365 Days** Free Update
-  **800,000+** Satisfied Customers



**QUESTION 1**

You are working as the administrator at ABC.com. The ABC.com network consists of a single Active Directory domain named ABC.com. The ABC.com network contains a DMZ that contains a two-node Network Load Balancing cluster, which

is located in a data centre that is physically impenetrable to unauthorized persons.

The cluster servers run Windows Server Web Edition and host an e-commerce website. The NLB cluster uses a virtual IP address that can be accessed from the Internet.

What can you do to mitigate the cluster's most obvious security vulnerability?

- A. Configure the cluster to require IPsec.
- B. Configure the network cards to use packet filtering on all inbound traffic to the cluster.
- C. Use EFS on the server hard disks.
- D. Configure intrusion detection the servers on the DMZ.
- E. Configure Mac addressing on the servers in the DMZ.

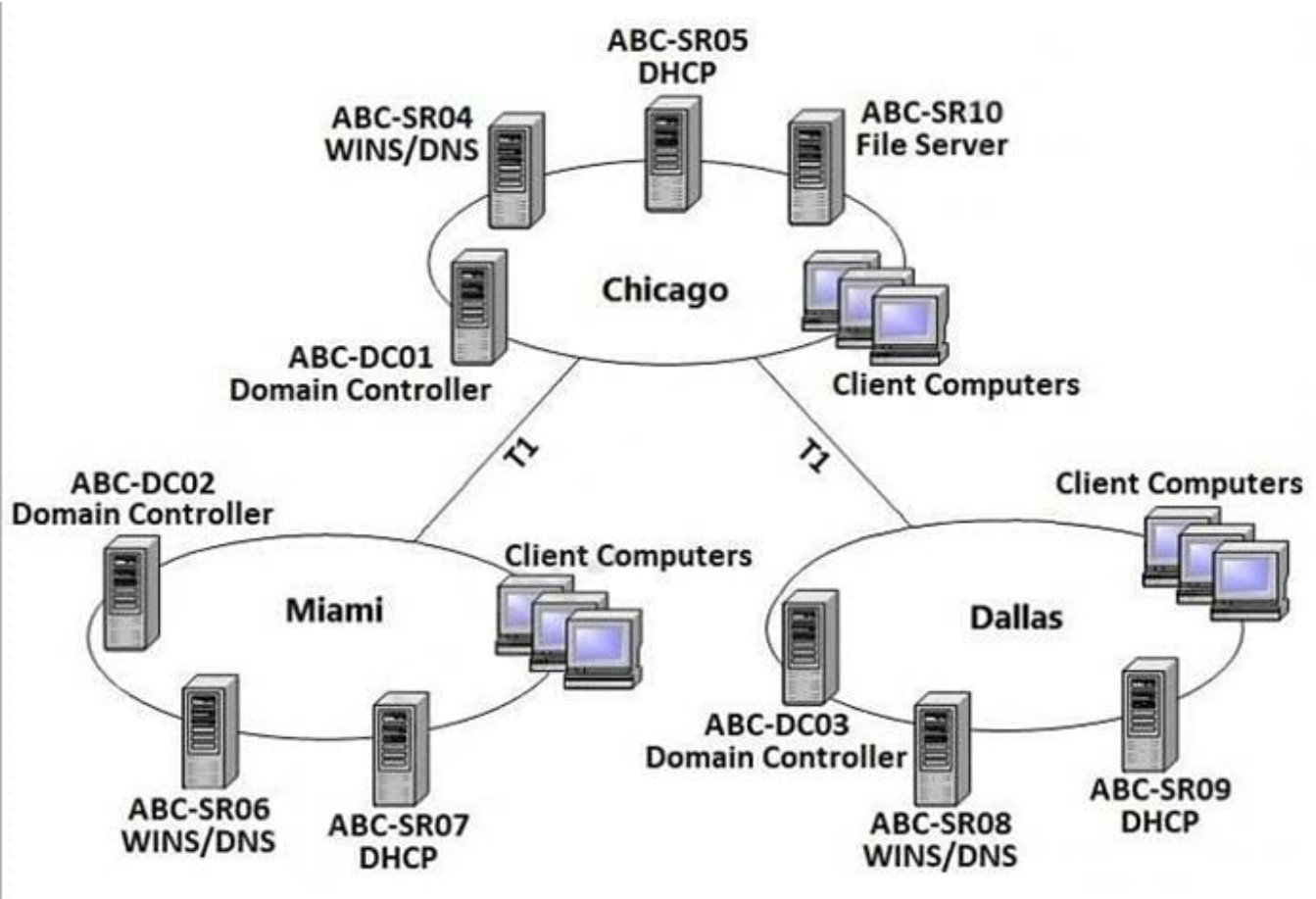
Correct Answer: B

---

**QUESTION 2**

The ABC.com network consists of a single Active Directory domain named ABC.com. All servers on the ABC.com network run Windows Server.

ABC.com has its headquarters in Chicago and two branch offices in Dallas and Miami. The branch offices are connected to the headquarters by means of T1 WAN links. The network at each office is configured as a separate Active Directory site as shown below.



ABC.com users in all three sites require access to a file server named ABC-SR10 that is located in the Chicago site.

Users in the Miami and Dallas offices are complaining about the unacceptable file server performance during peak working hours. You want to design a solution that provides fault tolerance for the file server and minimizes traffic over the WAN

links during office hours.

Which solution would you recommend?

- A. Implement a Distributed File System (DFS) with the DFS root in the Chicago office and DFS replicas in the Dallas and Miami offices. Configure replication to occur during off-peak hours.
- B. Install Windows Server file servers in the Dallas and Miami offices. Use the File Replication Service to replicate the folders during off-peak hours.
- C. Implement a two-node file server cluster in the Chicago office using Microsoft Cluster Services.
- D. Implement a two-node file server cluster in each office using Microsoft Cluster Services.

Correct Answer: A

**QUESTION 3**

You are the backup administrator for your company. You are responsible for ensuring that all data on ten files servers

are protected against data loss. Normal business hours from 8 A.M. to 5 P.M., Monday through Friday, are observed.

Network access is prohibited outside normal business hours.

A member server named File1 contains shared folder accessed by users in the sales department. The disk structure of File1 is shown in the following exhibit:

Volume	Hosts	Disk Size	Available Space
C	System and Boot Files	9 GB	2.54 GB
D	Shared Folders and User Profiles	25 GB	9.8 GB
F	Shared Folders	75 GB	53.35 GB

You have scheduled a daily backup of File1 as shown in the exhibit. (Click the Exhibit(s) button.) Users in the Sales department frequently leave documents open on their desktops when they leave work. These users occasionally request that

you restore a previous version of a file from backup. However, some of these files are not included in recent backup sets. You must modify the backup procedures for File1 so that all files, including open documents, will be included in the daily

backup. You also want to provide users with the ability to restore their files.

What should you do? (Choose all that apply. Each correct answer presents part of the solution.)

- A. Move all shared user data folders from drive D to drive F.
- B. Move all shared folders user data from drive F to drive D.
- C. Enable Shadow Copies of Shared Folders on drive F.
- D. Enable Volume shadow copy for the scheduled backup job.
- E. Select the Disable volume shadow copy option for the scheduled backup job.
- F. Install the Previous Versions Client software on all Sales department computers.
- G. Create a new daily backup job by using the same settings, but clear the Disable volume shadow copy option.

Correct Answer: ACFG

#### QUESTION 4

You work as the network administrator at ABC.com. The ABC.com network consists of a domain named ABC.com. The servers at the ABC.com network run Windows Server.

The ABC.com network has a Web server named ABC-SR11. During a routine monitoring you notice an increase in network traffic. Due to this you need to find out the MAC address of the workstation that initiated the transfers and the

command that was used. However, your action must not effect ABC-SR11.

What actions must you take?

- A. You must run the ipconfig/registerdns.
- B. You must use the Netmon utility.
- C. You must capture the IP traffic to ABC-SR11.
- D. You must Enable Server Message Block (SMB) signing on all the workstations.

Correct Answer: C

---

## QUESTION 5

You are the network administrator for your company. The network consists of a single Active Directory domain with five domain controllers that run Windows Server, Enterprise Edition. You are updating the public key infrastructure (PKI) for your company. Issuing Certification Authorities (CAs) have been provided certificates with a validity period of five years. Certificates are issued to enable network users to encrypt files on their computers. Basic EFS certificates have been issued and have been configured with the default validity period. You want to configure all new EFS certificates so that they are valid for up to three years.

What should you do? Each correct answer presents part of the solution. (Choose all that apply.)

- A. Duplicate and rename the Basic EFS certificate template.
- B. Open the Basic EFS certificate template Properties dialog box.
- C. Select the General tab and edit the validity period.
- D. Select the General tab and edit the renewal period.
- E. Select the Security tab and change the permission for the Administrators group to Enroll.

Correct Answer: AC

[JPR-934 VCE Dumps](#)

[JPR-934 Practice Test](#)

[JPR-934 Brindumps](#)