

## JN0-692<sup>Q&As</sup>

Service Provider Routing and Switching Support, Professional

### Pass Juniper JN0-692 Exam with 100% Guarantee

Free Download Real Questions & Answers **PDF** and **VCE** file from:

<https://www.leads4pass.com/jn0-692.html>

100% Passing Guarantee  
100% Money Back Assurance

Following Questions and Answers are all new published by Juniper  
Official Exam Center

-  **Instant Download** After Purchase
-  **100% Money Back** Guarantee
-  **365 Days** Free Update
-  **800,000+** Satisfied Customers



**QUESTION 1**

Click the Exhibit button.

```
[edit]
root@R3# run show isis database
IS-IS level 1 link-state database:
LSP ID                Sequence Checksum Lifetime Attributes
R3.00-00              0x1     0x2748    1146 L1 L2
  1 ISPs

IS-IS level 2 link-state database:
LSP ID                Sequence Checksum Lifetime Attributes
R4.00-00              0x2     0xda98    1150 L1 L2
R3.00-00              0x2     0x2de1    1152 L1 L2
R3.02-00              0x1     0x48c6    1152 L1 L2
  3 ISPs
```

Based on the output in the exhibit, which statement is correct?

- A. R4 has been configured with an IS-IS export policy and is announcing external routing information.
- B. R3 and R4 have an adjacency at both level 1 and level 2.
- C. R3 has been configured so that it is not used for transit traffic.
- D. R3 and R4 have only a level 2 adjacency.

Correct Answer: D

---

**QUESTION 2**

Click the Exhibit button.

```
[edit]
root@R4# run show isis database
IS-IS level 1 link-state database:
LSP ID                Sequence Checksum Lifetime Attributes
R4.00-00              0x2     0xcfbc    1072 L1 L2
R3.00-00              0x3     0xf316    1192 L1 L2 Overload
R3.02-00              0x2     0xc17e    1192 L1 L2
  3 LSPs

IS-IS level 2 link-state database:
LSP ID                Sequence Checksum Lifetime Attributes
R4.00-00              0x2     0x4baa    1073 L1 L2
  1 LSPs
```

Based on the output in the exhibit, which statement is correct?

- A. R4 has been configured with an IS-IS export policy and is announcing external routing information.
- B. R3 and R4 have an adjacency at both level 1 and level 2.
- C. R3 has been configured so that it is not used for transit traffic.
- D. R3 and R4 are both attached to other IS-IS areas.

Correct Answer: C

### QUESTION 3

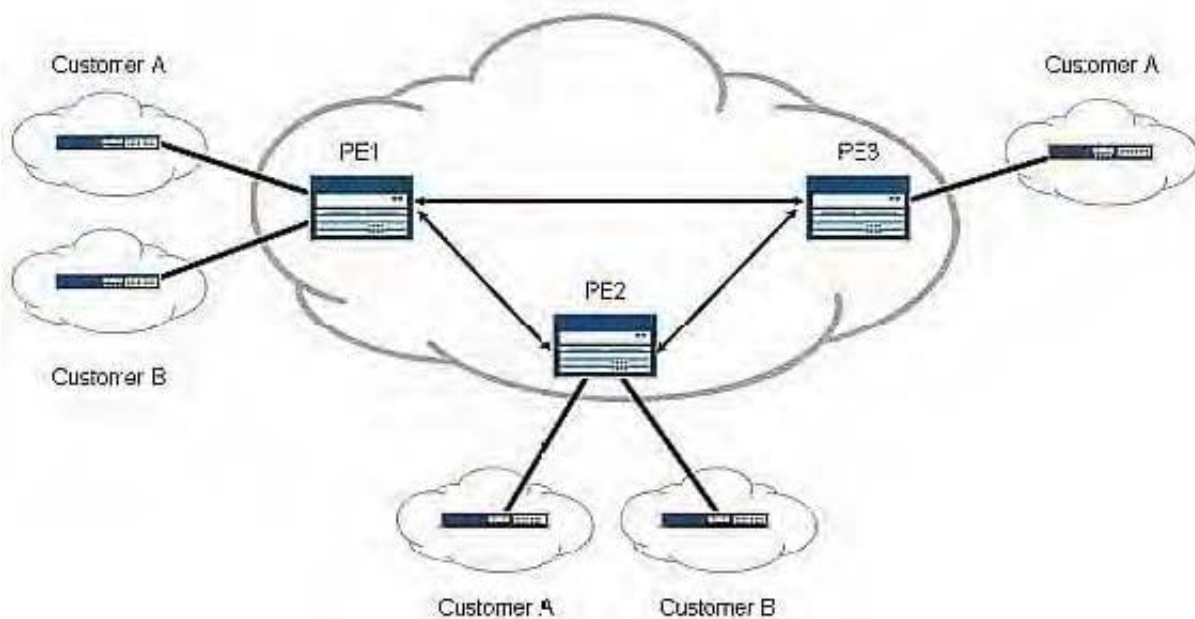
Which two statements are true when configuring OSPF authentication? (Choose two.)

- A. An OSPF link can support both simple password and MD5 authentication at the same time.
- B. An MD5 password requires a key ID.
- C. You can configure multiple MD5 passwords simultaneously on the same link.
- D. If the MD5 password negotiation fails, you can configure OSPF to automatically use a simple password as a backup.

Correct Answer: BC

### QUESTION 4

Click the Exhibit button.



Given the existing operational network shown in the exhibit, you now want to add a remote site for Customer B to the PE3 router. This change should not have an effect on the existing BGP sessions between the PE routers. Which Layer 3 VPN scaling mechanism allows PE3 to begin receiving Customer B routes?

- A. route origin
- B. route refresh
- C. route reflection
- D. route target filtering

Correct Answer: B

---

### QUESTION 5

Click the Exhibit button.

```
BGP RECV 192.168.56.1+179 -> 192.168.56.5+49444
BGP RECV message type 4 (KeepAlive) length 19

BGP RECV 192.168.56.1+179 -> 192.168.56.5+49444
BGP RECV message type 2 (Update) length 54
BGP RECV Update PDU length 54
BGP RECV flags 0x40 code Origin(1): IGP
BGP RECV flags 0x40 code ASPath(2) length 0: <null>
BGP RECV flags 0x40 code NextHop(3): 192.168.56.1
BGP RECV flags 0x40 code LocalPref(5): 100
BGP RECV          10.10.56.0/30 , 192.168.56.1/32
```

The exhibit contains a sample trace file of a BGP update message. Which two statements are true? (Choose two.)

- A. 10.10.56.0/30 is a route internal to the AS.
- B. The router that sent this update is the BGP originator of 10.10.56.0/30.
- C. The BGP session is EBGP.
- D. The local preference has been changed from the default settings.

Correct Answer: AB

[JN0-692 PDF Dumps](#)

[JN0-692 Study Guide](#)

[JN0-692 Braindumps](#)