

JN0-692^{Q&As}

Service Provider Routing and Switching Support, Professional

Pass Juniper JN0-692 Exam with 100% Guarantee

Free Download Real Questions & Answers **PDF** and **VCE** file from:

<https://www.leads4pass.com/jn0-692.html>

100% Passing Guarantee
100% Money Back Assurance

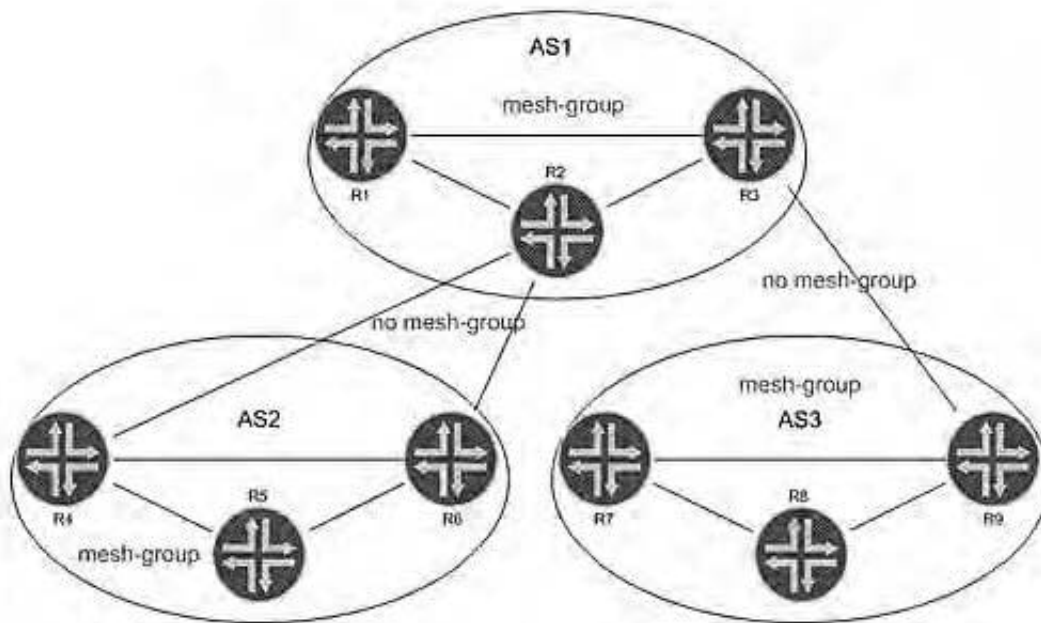
Following Questions and Answers are all new published by Juniper
Official Exam Center

- ⚙️ **Instant Download** After Purchase
- ⚙️ **100% Money Back** Guarantee
- ⚙️ **365 Days** Free Update
- ⚙️ **800,000+** Satisfied Customers



QUESTION 1

Click the Exhibit button.



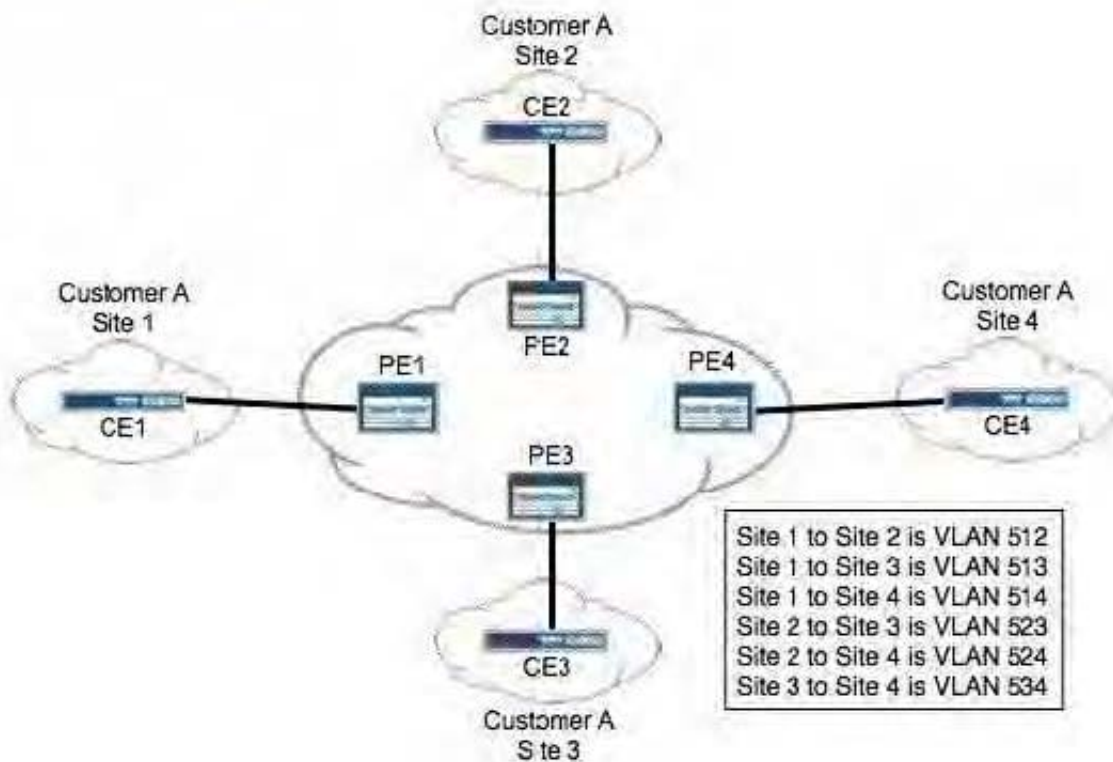
In the exhibit, all routers within each AS are configured for Anycast RP. All intra-AS routers are configured within the same MSDP mesh group. Inter-AS multicast has been enabled using MSDP without MSDP mesh groups. Which statement is true?

- A. The AS border routers allow TCP port 636 in their infrastructure ACLs.
- B. Duplicate SA messages may be received in AS2.
- C. SA messages from R5, R7, or R8 are not forwarded to AS1.
- D. Inter-AS MSDP peerings must be configured on the AS border routers.

Correct Answer: B

QUESTION 2

Click the Exhibit button.



You are provisioning a full-mesh BGP Layer 2 VPN for Customer A. The customer has four remote sites in their network. Using best practices, you assigned interface unit numbers matching the assigned VLAN numbers. Which Layer 2 VPN configuration is correct for PE2?

```
A. 12vpn {
    encapsulation-type ethernet-vlan;
    site CE2 {
        site-identifier 2;
        interface ge-0/0/0.523;
        interface ge-0/0/0.512;
        interface ge-0/0/0.524;
    }
}
```

```
B. 12vpn {
    encapsulation-type ethernet-vlan;
    site CE2 {
        site-identifier 2;
        interface ge-0/0/0.523;
        interface ge-0/0/0.524;
        interface ge-0/0/0.512;
    }
}
```

```
C. 12vpn {
    encapsulation-type ethernet-vlan;
    site CE2 {
        site-identifier 2;
        interface ge-0/0/0.512;
        interface ge-0/0/0.523;
        interface ge-0/0/0.524;
    }
}
```

```
D. 12vpn {
    encapsulation-type ethernet-vlan;
    site CE2 {
        site-identifier 2;
        interface ge-0/0/0.512;
        interface ge-0/0/0.524;
        interface ge-0/0/0.523;
    }
}
```

A. Option A

B. Option B

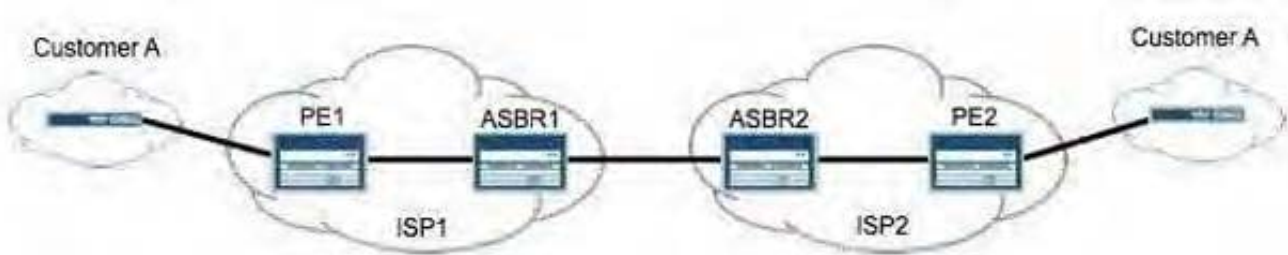
C. Option C

D. Option D

Correct Answer: C

QUESTION 3

Click the Exhibit button.



You are building an interprovider VPN with ISP2 to support end-to-end connectivity for Customer A, as shown in the exhibit. For scalability reasons, the ASBR routers cannot exchange VPN routes for Customer

A. Which two configurations are needed to support this requirement? (Choose two.)

- A. family inet-vpn on the ASBRs
- B. labeled-unicast on the ASBRs
- C. multihop EBGP between the PEs
- D. one VRF on the ASBRs for Customer A

Correct Answer: BC

QUESTION 4

One of your router's OSPF adjacencies is down.

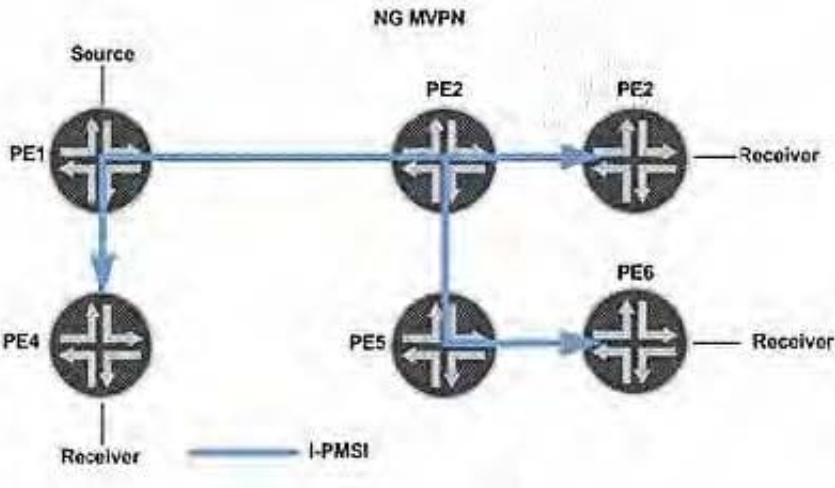
What are three reasons for this adjacency state change? (Choose Three)

- A. A filter has just been configured on one of the OSPF routers.
- B. The OSPF hello value is the same on both routers.
- C. The controlling BFD session state has gone down.
- D. The authentication key on both routers matches.
- E. One of the physical interfaces has gone down.

Correct Answer: ACE

QUESTION 5

Click the Exhibit button.



In the exhibit, NG-MVPN is used for a Layer 3 VPN. Which two statements are valid? (Choose two.)

- A. The egress PEs for I-PMSI tunnels should signal a label value of 3.
- B. The vrf-table-label parameter is configured on the PEs.
- C. PIM must be enabled on the PE and P routers.
- D. The provider tunnel shown is similar to a draft-Rosen default MDT.

Correct Answer: BD

[Latest JN0-692 Dumps](#)

[JN0-692 Study Guide](#)

[JN0-692 Exam Questions](#)