

JN0-692^{Q&As}

Service Provider Routing and Switching Support, Professional

Pass Juniper JN0-692 Exam with 100% Guarantee

Free Download Real Questions & Answers **PDF** and **VCE** file from:

<https://www.leads4pass.com/jn0-692.html>

100% Passing Guarantee
100% Money Back Assurance

Following Questions and Answers are all new published by Juniper
Official Exam Center

- ⚙️ **Instant Download** After Purchase
- ⚙️ **100% Money Back** Guarantee
- ⚙️ **365 Days** Free Update
- ⚙️ **800,000+** Satisfied Customers



QUESTION 1

Click the Exhibit button.

```
[edit class-of-service]
user@router# show
classifiers {
    dscp classifierA {
        forwarding-class low-priority {
            loss-priority low code-points 000000;
            loss-priority high code-points 000001;
        }
        forwarding-class medium-priority {
            loss-priority low code-points 000010;
            loss-priority high code-points 000011;
        }
        forwarding-class high-priority {
            loss-priority low code-points 000100;
            loss-priority high code-points 000101;
        }
    }
}
...
forwarding-classes {
    class low-priority queue-num 0;
    class medium-priority queue-num 1;
    class high-priority queue-num 2;
    class NC queue-num 3;
```

You manage an MX series router (with 100 ms buffer size per port) that includes the configuration shown in the exhibit. Traffic marked with DSCP 000011 is entering the ge-1/0/4 interface at 102 Mbps. The traffic exits the device on the ge-1/0/5 interface. There is no other traffic transiting the router. What happens to traffic exceeding 100 Mbps?

- A. Traffic exceeding 100 Mbps is forwarded.
- B. Traffic exceeding 100 Mbps is buffered.
- C. Traffic exceeding 100 Mbps is redirected to a rate limiter.
- D. Traffic exceeding 100 Mbps is dropped.

Correct Answer: A

QUESTION 2

You have recently implemented a new Layer 2 VPN and it is not establishing. The show l2vpn connections command

displays an out-of-range state.

What is causing this problem?

- A. The local site ID value is too high for the label block.
- B. The VRF target community values do not match between sites.
- C. The VRF route distinguisher values do not match between sites.
- D. The local site ID is not defined.

Correct Answer: A

QUESTION 3

Click the Exhibit button.

```
[edit]
user@router# show firewall
policer policerA {
  logical-interface-policer;
  if-exceeding {
    bandwidth-limit 10m;
    burst-size-limit 500k;
  }
  then discard;
}

[edit]
user@router# show interfaces
ge-0/0/2 {
  unit 0 {
    family inet {
      policer {
        input policerA;
      }
    }
    family inet6 {
      policer {
        input policerA;
      }
    }
  }
  unit 1 {
    family inet {
      policer {
        input policerA;
      }
    }
  }
}
ge-0/0/3 {
  unit 0 {
    family inet {
      policer {
        input policerA;
      }
    }
    family inet6 {
      policer {
        input policerA;
      }
    }
  }
  unit 1 {
    family inet {
      policer {
        input policerA;
      }
    }
    family inet6 {
      policer {
        input policerA;
      }
    }
  }
}
```

Traffic is flowing through the interfaces in the exhibit as follows:

On ge-0/0/2.0, IPv4 traffic has a throughput rate of 4 Mbps, and the burst size counter is at 200 KB.

On ge-0/0/2.0, IPv6 traffic has a throughput rate of 7 Mbps, and the burst size counter is at 550 KB.

On ge-0/0/3.0, IPv4 traffic has a throughput rate of 5 Mbps, and the burst size counter is at 250 KB.

On ge-0/0/3.1, IPv6 traffic has a throughput rate of 12 Mbps, and the burst size counter is at 450 KB.

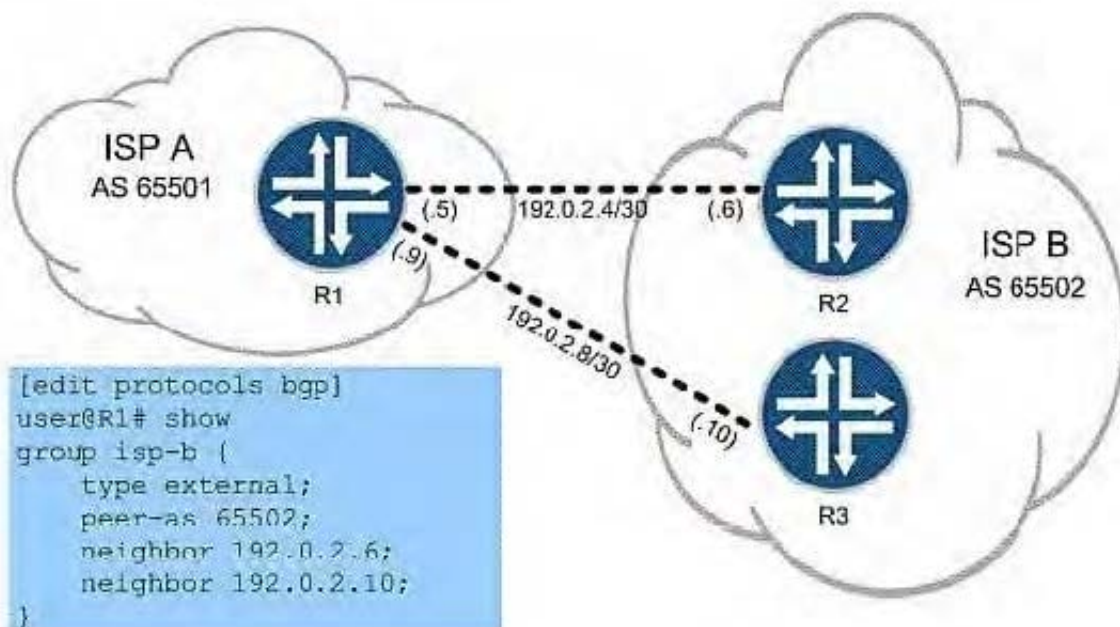
Which statement describes what is happening?

- A. IPv6 traffic on ge-0/0.3.1 is being dropped; all other traffic is unaffected.
- B. IPv4 traffic on ge-0/0/2.0 is unaffected; IPv6 traffic on ge-0/0/2.0 is being dropped; IPv4 traffic on ge0/0/3.0 is unaffected; IPv6 traffic on ge-0/0/3.1 is being dropped.
- C. IPv4 traffic on ge-0/0/2.0 is being dropped; IPv6 traffic on ge-0/0/2.0 is being dropped; IPv4 traffic on ge-0/0/3.0 is unaffected; IPv6 traffic on ge-0/0/3.1 is unaffected.
- D. All IPv4 and IPv6 traffic on ge-0/0/2 and ge-0/0/3 is being dropped.

Correct Answer: B

QUESTION 4

Click the Exhibit button.



You work for ISP A, as shown in the exhibit, and must configure R1 to use load balancing across both available links for all routes to ISP B's network. You start by configuring this policy:

```
policy-statement load-balance {
```

```
then {
load-balance per-packet;
}
}
```

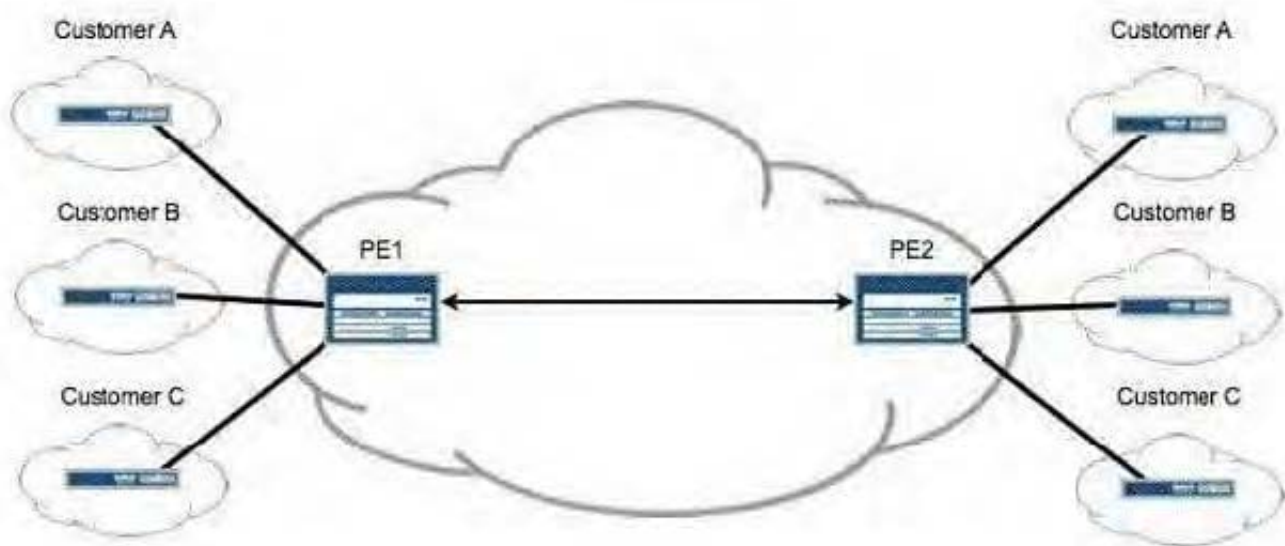
Which two commands do you use to finish the configuration? (Choose two.)

- A. set protocols bgp group isp-b multihop
- B. set routing-options forwarding-table export load-balance
- C. set routing-options forwarding-table import load-balance
- D. set protocols bgp group isp-b multipath

Correct Answer: BD

QUESTION 5

Click the Exhibit button.



After adding Customer C to your Layer 3 VPN, you must validate that PE2 is receiving VPN routes for all customers attached to PE1, as shown in the exhibit. Which operational command displays this information?

- A. show route instance
- B. show route summary
- C. show route table bgp.l3vpn.0
- D. show route table customer-c.inet.0

Correct Answer: C

[Latest JN0-692 Dumps](#)

[JN0-692 Practice Test](#)

[JN0-692 Study Guide](#)