

JN0-682^{Q&As}

Data Center Professional (JNCIP-DC)

Pass Juniper JN0-682 Exam with 100% Guarantee

Free Download Real Questions & Answers **PDF** and **VCE** file from:

<https://www.leads4pass.com/jn0-682.html>

100% Passing Guarantee
100% Money Back Assurance

Following Questions and Answers are all new published by Juniper
Official Exam Center

-  **Instant Download** After Purchase
-  **100% Money Back** Guarantee
-  **365 Days** Free Update
-  **800,000+** Satisfied Customers



QUESTION 1

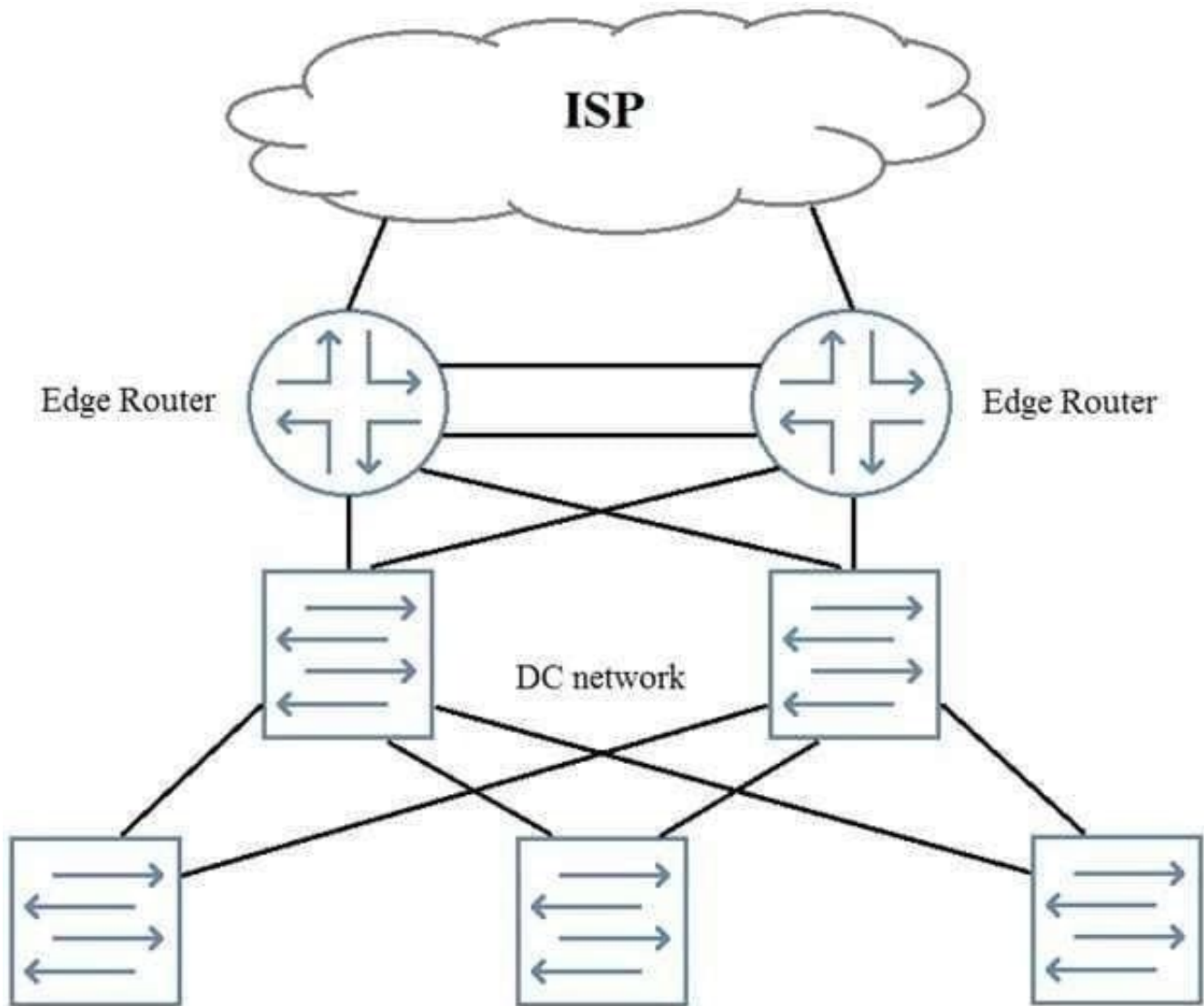
Which two statements are correct about VXLANs? (Choose two.)

- A. VXLANs have smaller broadcast domains than VLANs.
- B. VXLANs have a smaller logical network identifier than VLANs.
- C. VXLANs can have a theoretical maximum of 16 million unique networks.
- D. VXLANs are an overlay technology.

Correct Answer: CD

QUESTION 2

You need to add perimeter security to the network shown in the exhibit. All traffic must be inspected for attacks. The edge routers are using all available ports. Your solution must maintain both port and device resiliency.



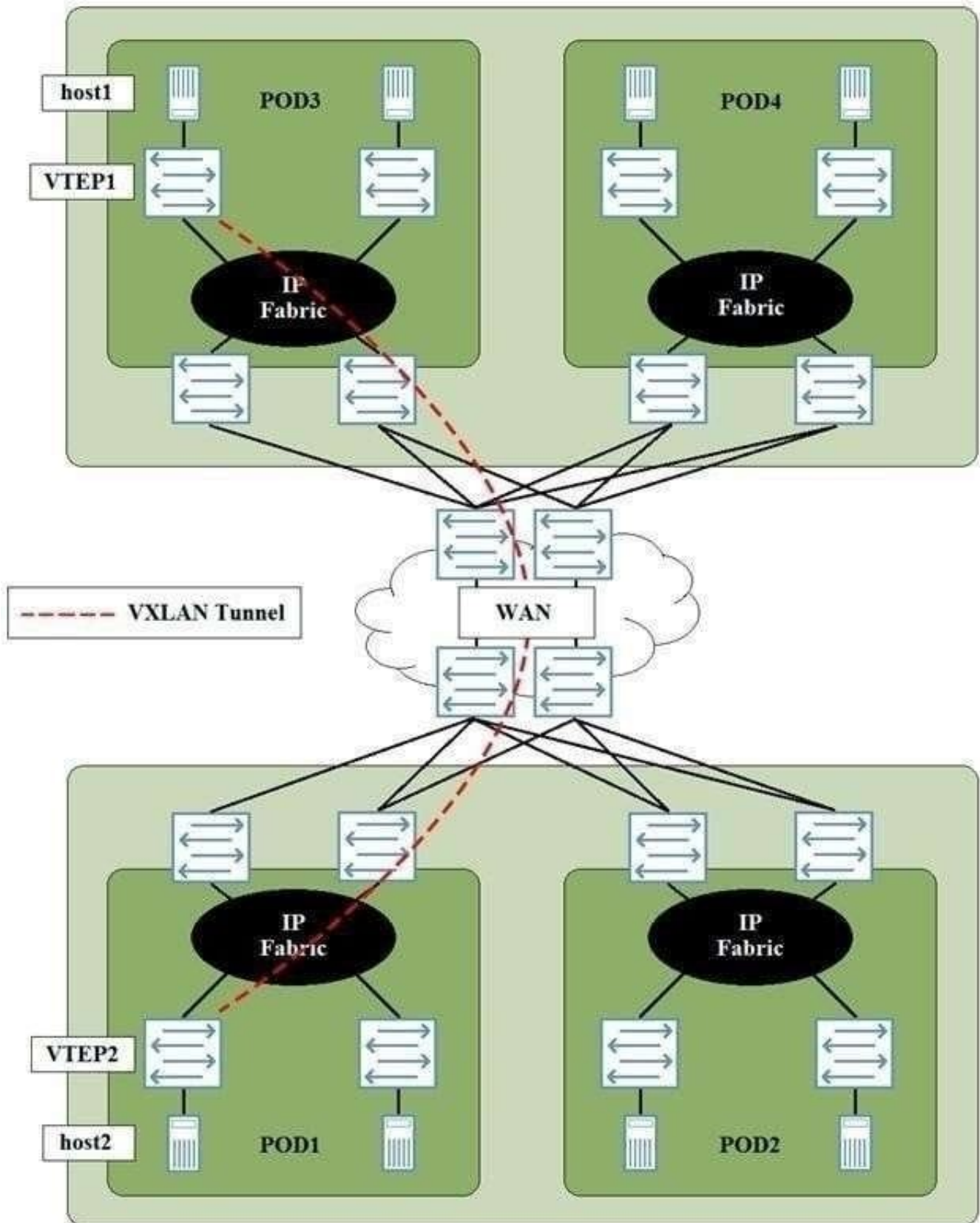
In this scenario, which design would satisfy these requirements?

- A. one-arm SRX Series chassis cluster
- B. one-arm SRX Series device using LAG
- C. inline SRX Series chassis cluster
- D. inline SRX Series device using LAG

Correct Answer: C

QUESTION 3

Referring to the exhibit, DC1 and DC2 have a DCI across a service provider WAN connection. Host1 in DC1 must have Layer 2 connectivity to host2 in DC2. A VXLAN tunnel must be created between VTEP1 and VTEP2.



In this scenario, which statement is true?

- A. A route to the loopback address on VTEP must be present on VTEP1.

- B. VTEP and VTEP2 must peer using IBGP.
- C. VXLAN Layer 3 gateway must be provisioned at the Super Spine layer.
- D. The service provider WAN connection be an MPL5-based WAN connection.

Correct Answer: A

QUESTION 4

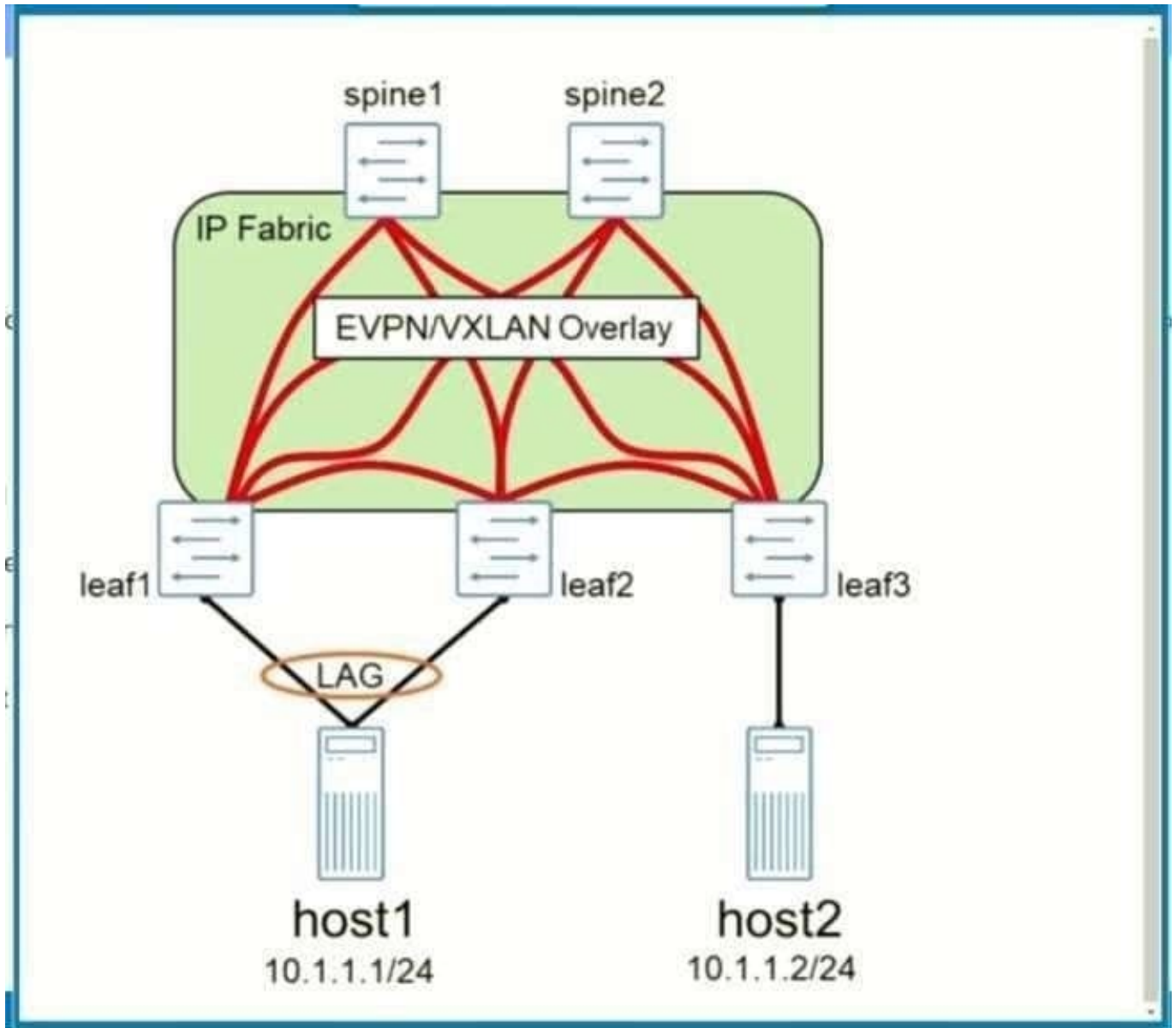
A VXLAN adds 50 to 54 bytes of extra header information to an Ethernet frame. In this scenario, how would you accommodate this increased?

- A. Increase the MTU on the Physical interface connected to the VXLAN network.
- B. Increase the MTU on the VTEP interface connected to the VXLAN network
- C. Only use switches as VTEPs.
- D. Decrease the number VXLANs used

Correct Answer: A

QUESTION 5

An EVPN-signaled VXLAN overlay has been deployed in the network shown in the exhibit. An EVPN LAG has been configured to connect host1 to the network, and device leaf1 has been elected as the designated forwarder.



In this scenario, which statement is true?

- A. The leaf3 device can utilize both leaf1 and leaf2 to forward unicast packets from host2 to host1.
- B. An ICCP control link must be configured between leaf1 and leaf2.
- C. The leaf3 device will only receive an advertisement to the LAG segment from leaf1.
- D. Broadcast packets sent from host2 will not be forwarded to leaf2.

Correct Answer: C

[Latest JN0-682 Dumps](#)

[JN0-682 VCE Dumps](#)

[JN0-682 Exam Questions](#)