

## JN0-681<sup>Q&As</sup>

New Data Center, Professional

### Pass Juniper JN0-681 Exam with 100% Guarantee

Free Download Real Questions & Answers **PDF** and **VCE** file from:

<https://www.leads4pass.com/jn0-681.html>

100% Passing Guarantee  
100% Money Back Assurance

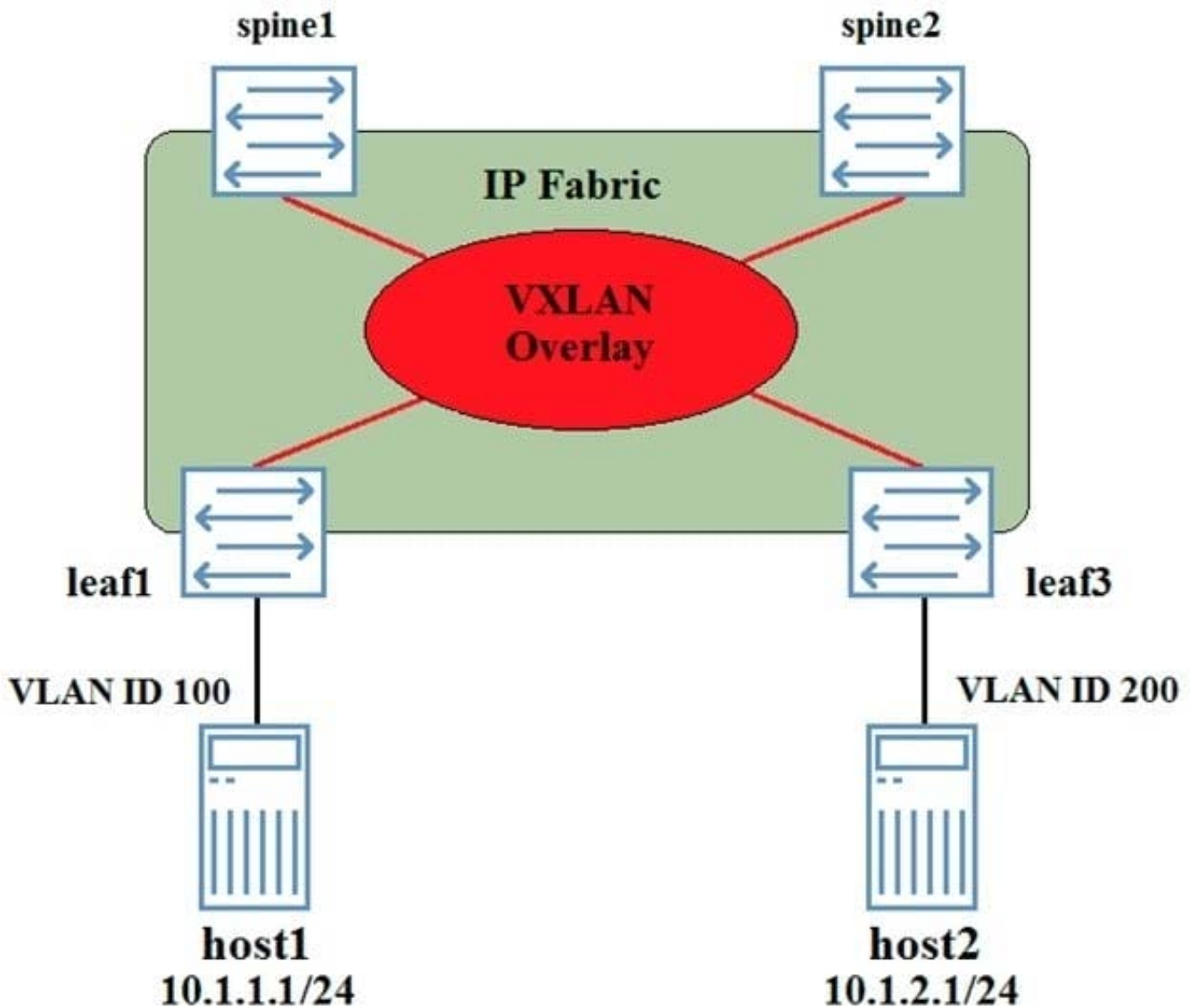
Following Questions and Answers are all new published by Juniper  
Official Exam Center

- ⚙️ **Instant Download** After Purchase
- ⚙️ **100% Money Back** Guarantee
- ⚙️ **365 Days** Free Update
- ⚙️ **800,000+** Satisfied Customers



**QUESTION 1**

You have deployed a VXLAN as shown in the exhibit Leaf1, leaf3, spine1, and spine2 have been configured as VTEPs. Host1 cannot communicate with host2.



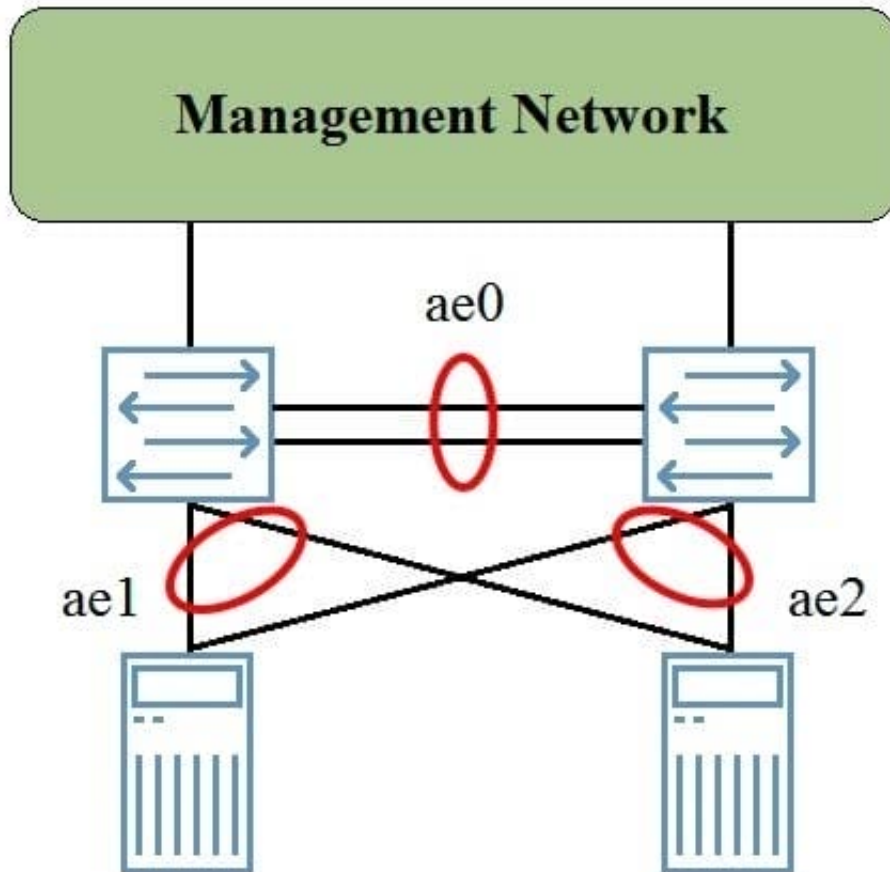
Referring to the exhibit, how would you solve this problem?

- A. The VLAN ID on the link connected to host2 must be changed to VLAN 100.
- B. A DCI connection must be created between the VLANs.
- C. A Layer 3 VXLAN gateway must be configured on at least one of the devices.
- D. Host1 and host2 must be placed in the same VRF.

Correct Answer: C

**QUESTION 2**

The MC-LAG group shown in the exhibit is providing high availability services for the directly connected servers. The backup liveness detection is applied to the ICL-PL link, however, when one of the members rebooted, there was traffic loss for a few seconds.



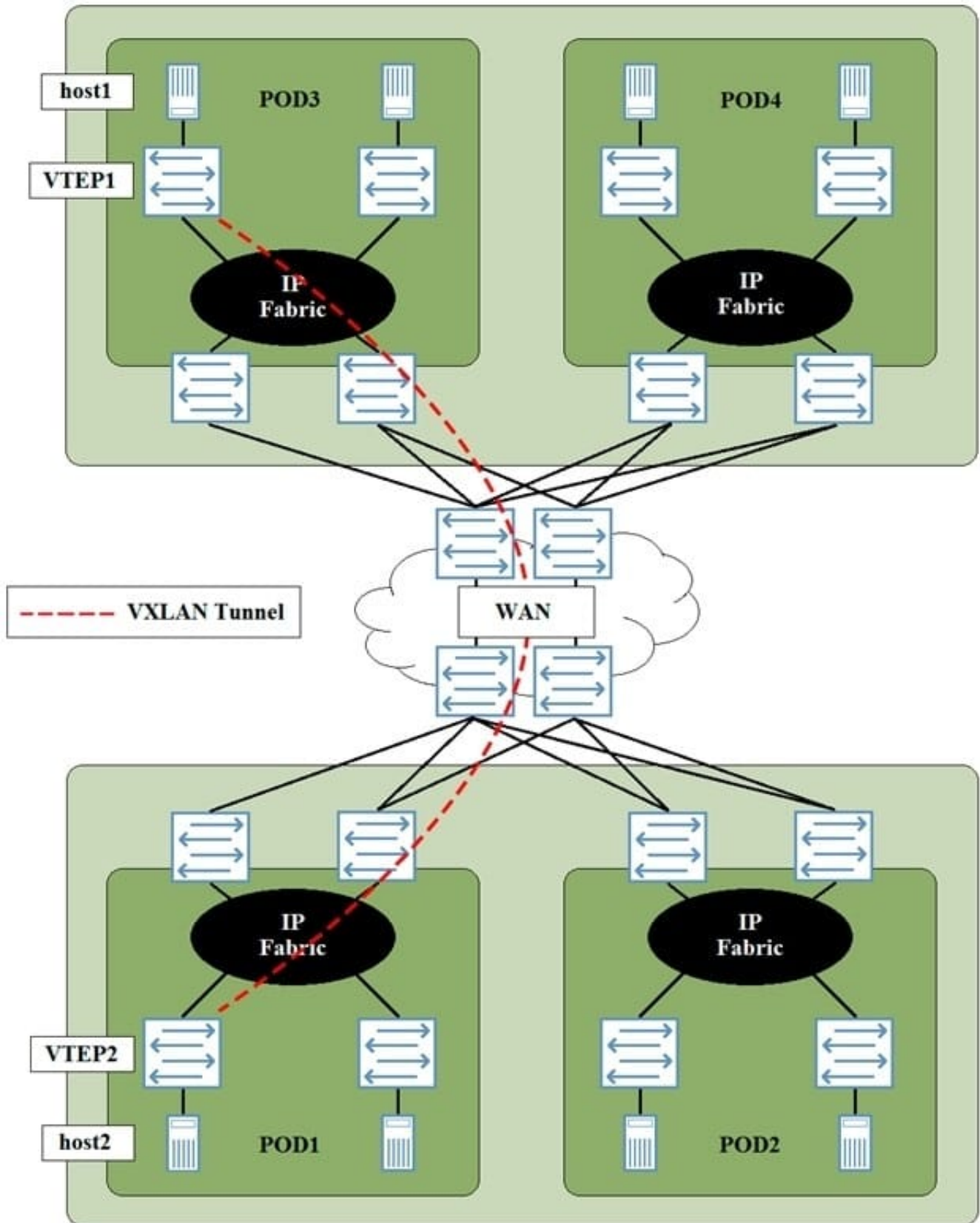
In this scenario, where should you apply the backup liveness detection?

- A. on the ae1 interface
- B. on the ae2 interface
- C. on the management interfaces
- D. on the ae0 interface

Correct Answer: C

**QUESTION 3**

Referring to the exhibit, DC1 and DC2 have a DCI across a service provider WAN connection. Host1 in DC1 must have Layer 2 connectivity to host2 in DC2. A VXLAN tunnel must be created between VTEP1 and VTEP2.



In this scenario, which statement is true?

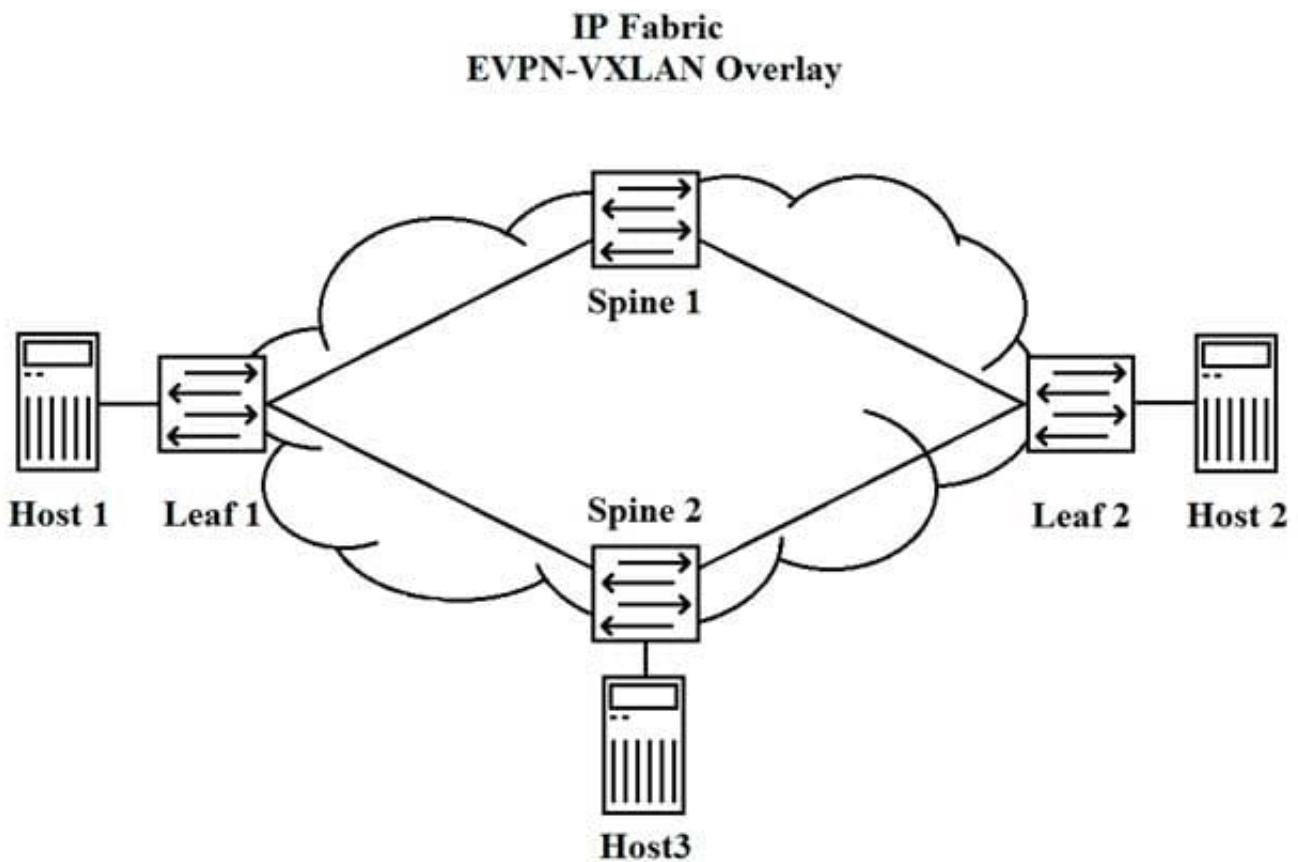
- A. The service provider WAN connection cannot be an MPLS-based WAN connection.

- B. VXLAN Layer 3 gateway must be provisioned at the Super Spine layer.
- C. A route to the loopback address on VTEP2 must be present on VTEP1.
- D. VTEP1 and VTEP2 must peer using IBGP.

Correct Answer: C

**QUESTION 4**

Referring to the exhibit, Host 1 and Host 3 have exchanged traffic.



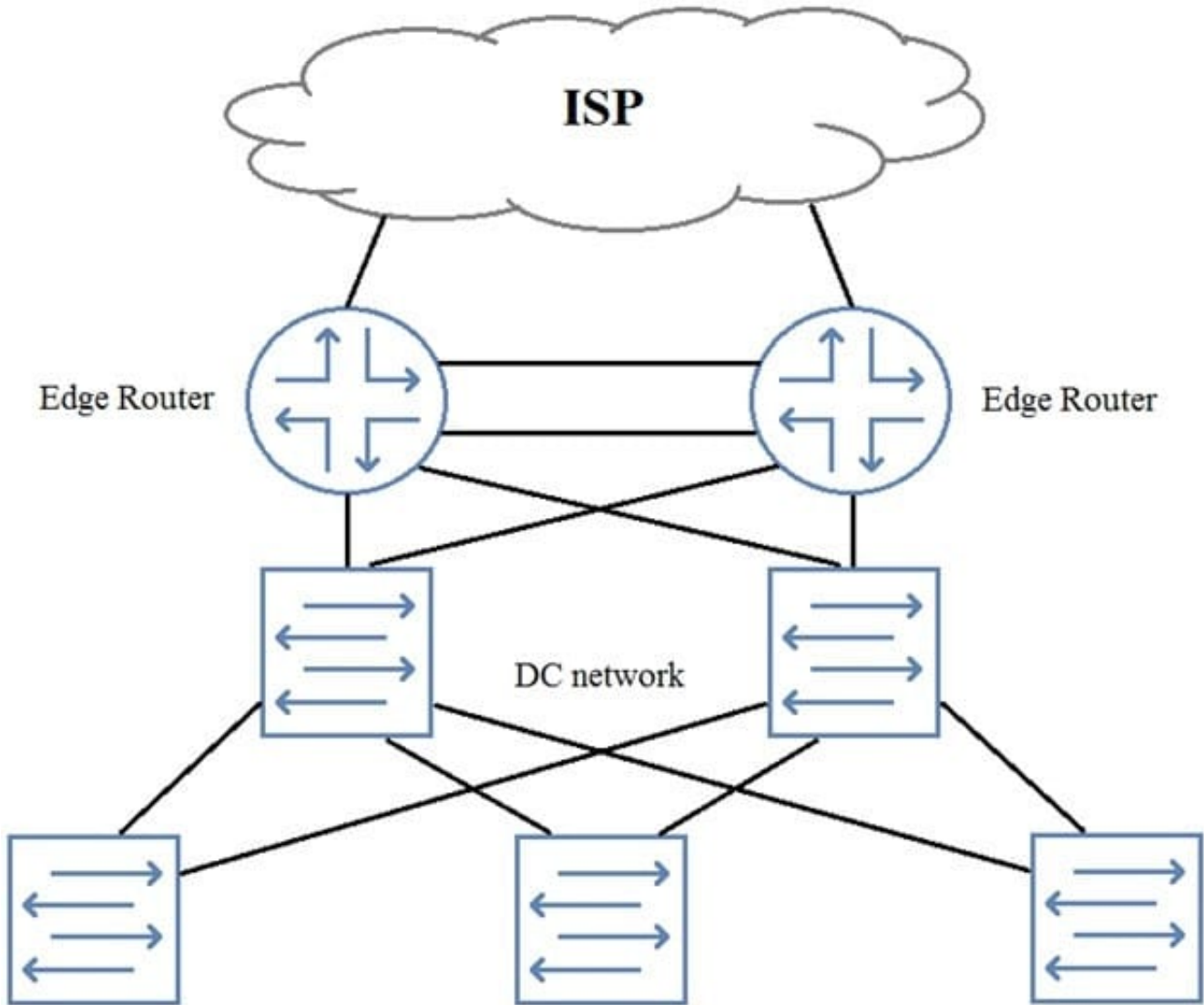
In this scenario, which statement is true?

- A. Leaf 2 does not learn Host 1's MAC address until Host 1 and Host 2 send traffic to each other.
- B. Leaf 2 learns Host 1's MAC address through periodic updates from Spine 2.
- C. Leaf 2 learns Host 1's MAC address when Host 3 learns Host 1's MAC address.
- D. Leaf 2 learns Host 1's MAC address when Leaf 1 queries Host 1.

Correct Answer: D

**QUESTION 5**

You need to add perimeter security to the network shown in the exhibit. All traffic must be inspected for attacks. The edge routers are using all available ports. Your solution must maintain both port and device resiliency.



In this scenario, which design would satisfy these requirements?

- A. one-arm SRX Series device using LAG
- B. one-arm SRX Series chassis cluster
- C. inline SRX Series chassis cluster
- D. inline SPX Series device using LAG

Correct Answer: A