

JN0-663^{Q&As}

Service Provider Routing and Switching, Professional (JNCIP-SP)

Pass Juniper JN0-663 Exam with 100% Guarantee

Free Download Real Questions & Answers **PDF** and **VCE** file from:

<https://www.leads4pass.com/jn0-663.html>

100% Passing Guarantee
100% Money Back Assurance

Following Questions and Answers are all new published by Juniper
Official Exam Center

- ⚙️ **Instant Download** After Purchase
- ⚙️ **100% Money Back** Guarantee
- ⚙️ **365 Days** Free Update
- ⚙️ **800,000+** Satisfied Customers



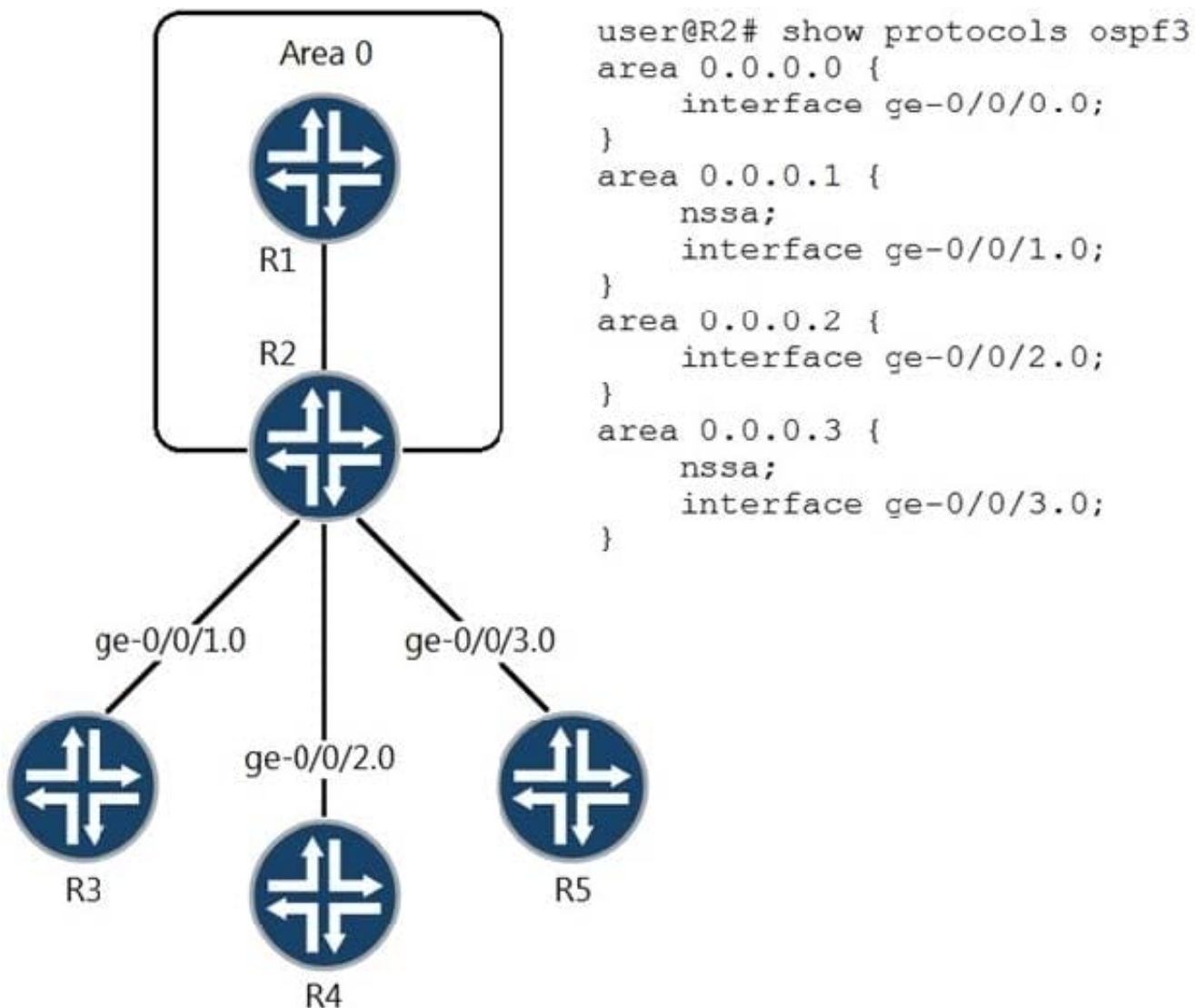
QUESTION 1

Which two statements regarding ingress replication in EVPN are correct? (Choose two.)

- A. Ingress replication labels are learned from remote PEs through the EVPN Type-3 route.
- B. Ingress replication relies on PIM to build the multicast replication tree.
- C. Ingress replication is only supported in vrf-type routing instances.
- D. Ingress replication will replicate all BUM traffic to all remote PEs in the EVI.

Correct Answer: AD

QUESTION 2



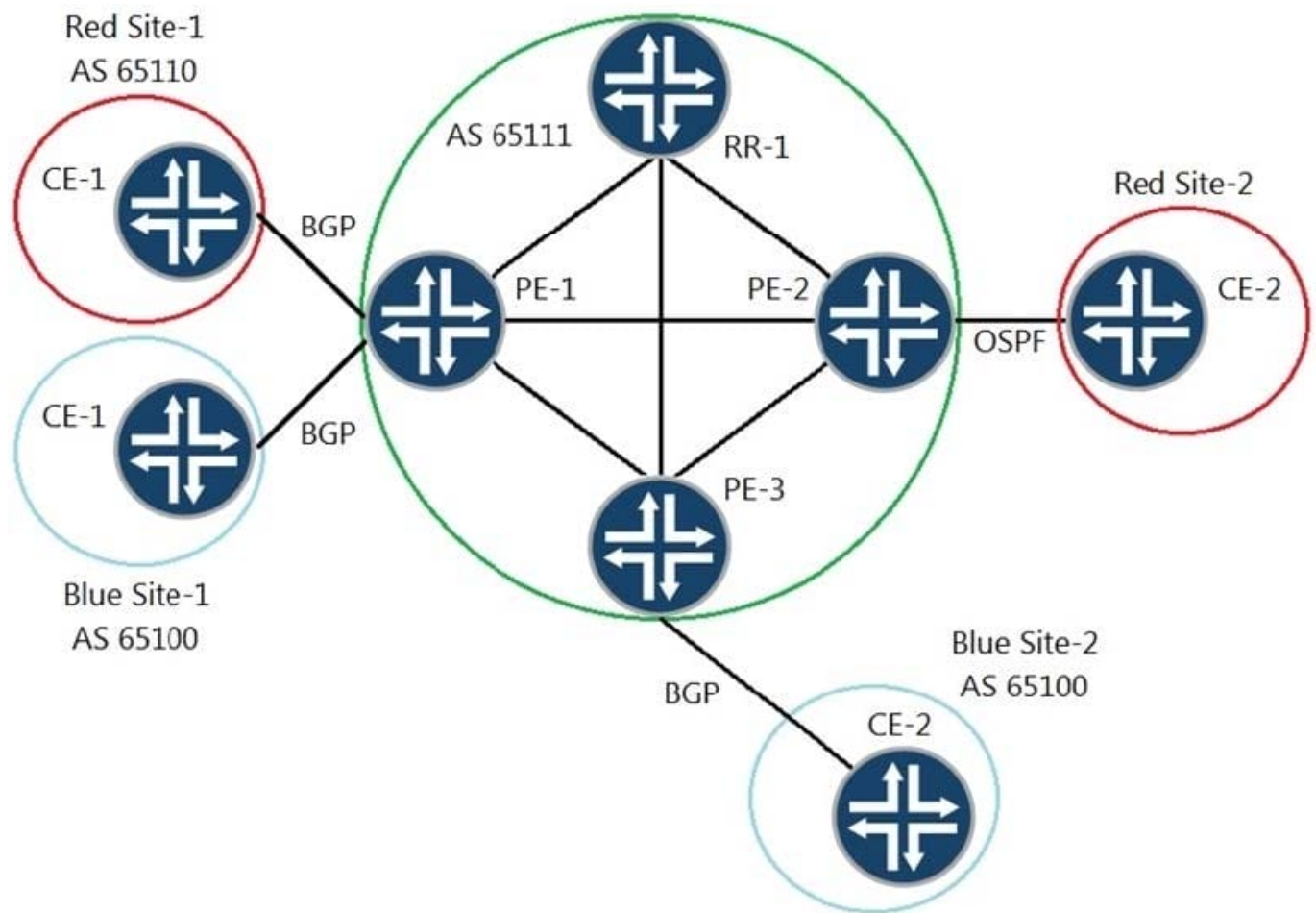
A network administrator is concerned about the number of LSAs that they are observing on the network. What will

reduce Type 7 LSAs advertised from R2 to the non-backbone routers shown in the exhibit?

- A. Configure no-summaries under area 0.0.0.2 on R2.
- B. Configure nssa under area 0.0.0.2 on R2.
- C. Configure no-nssa-abr under protocols ospf3 on R2.
- D. Configure no-summaries under protocols ospf3 on R2.

Correct Answer: C

QUESTION 3



You have a Layer 3 VPN established between PE-1 and PE-2 as well as between PE-1 and PE-3. You are using a route reflector (RR-1) to distribute VPN routes to your IBGP peers. You are asked to ensure that only relevant routes are sent from RR-1 to each of the PE routers.

Referring to the exhibit, which statement is correct?

- A. You should use VRF export policies on RR-1 to control which routes are sent to each PE router.
- B. You should use route target filtering only on RR-1 to control which routes are sent to each PE router.

C. You should use firewall filtering on RR-1 and all the PE devices to control which routes are sent to each PE router.

D. You should use route target filtering on RR-1 and all the PE devices to control which routes are sent to each PE router.

Correct Answer: B

QUESTION 4

```
[edit]
user@router# show protocols bgp group ISP
export ISP;
neighbor 172.16.20.20 {
    peer-as 65310;
}
neighbor 192.168.51.200 {
    peer-as 65441;
}
```

```
[edit]
user@router# show policy-options
policy-statement ISP {
    term ROUTES {
        from {
            protocol bgp;
            as-path LOCAL-ROUTES;
        }
        then accept;
    }
}
as-path LOCAL-ROUTES "(.*)";
```

Your network is connected to two different ISPs and you notice that they are using your network for transit traffic.

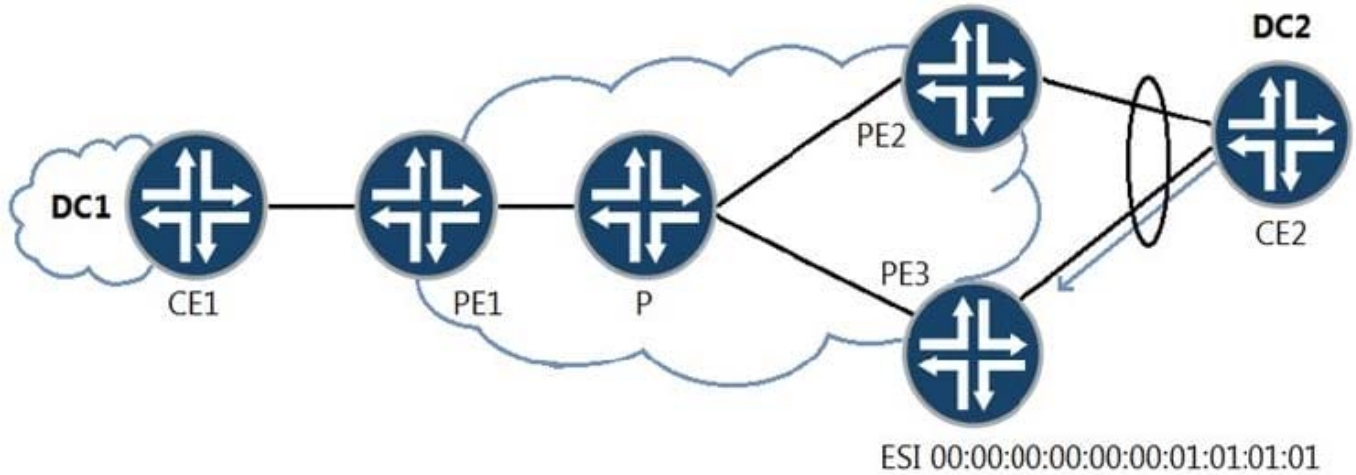
In this scenario, which two configuration statements will solve this problem? (Choose two.)

- A. set policy-options policy-statement ISP term REST then reject
- B. set policy-options policy-statement ISP term ROUTES then reject
- C. set policy-options as-path LOCAL-ROUTES "()"

D. set policy-options as-path LOCAL-ROUTES "(65310|65441)+"

Correct Answer: AC

QUESTION 5



Referring to the exhibit, traffic sent from CE-A2 to PE3 does not loop back to CE-A2 through PE2.

Which two EVPN functions accomplish this task? (Choose two.)

- A. multicast ingress replication
- B. aliasing
- C. split horizon
- D. designated forwarder election

Correct Answer: CD

[JN0-663 VCE Dumps](#)

[JN0-663 Practice Test](#)

[JN0-663 Brindumps](#)