

## JN0-362<sup>Q&As</sup>

Service Provider Routing and Switching - Specialist (JNCIS-SP)

### Pass Juniper JN0-362 Exam with 100% Guarantee

Free Download Real Questions & Answers **PDF** and **VCE** file from:

<https://www.leads4pass.com/jn0-362.html>

100% Passing Guarantee  
100% Money Back Assurance

Following Questions and Answers are all new published by Juniper  
Official Exam Center

- ⚙️ **Instant Download** After Purchase
- ⚙️ **100% Money Back** Guarantee
- ⚙️ **365 Days** Free Update
- ⚙️ **800,000+** Satisfied Customers



**QUESTION 1**

Click the Exhibit button.

```
[edit protocols ospf]
user@router# show
reference-bandwidth 100m
area 0.0.0.0 {
    interface ge-1/0/0.0 {
        interface-type p2p;
    }
    interface ge-3/0/0.0 {
        priority 128;
    }
    interface xe-0/0/0.0 {
        interface-type nbma;
    }
}
```

Referring to the exhibit, which statement is correct?

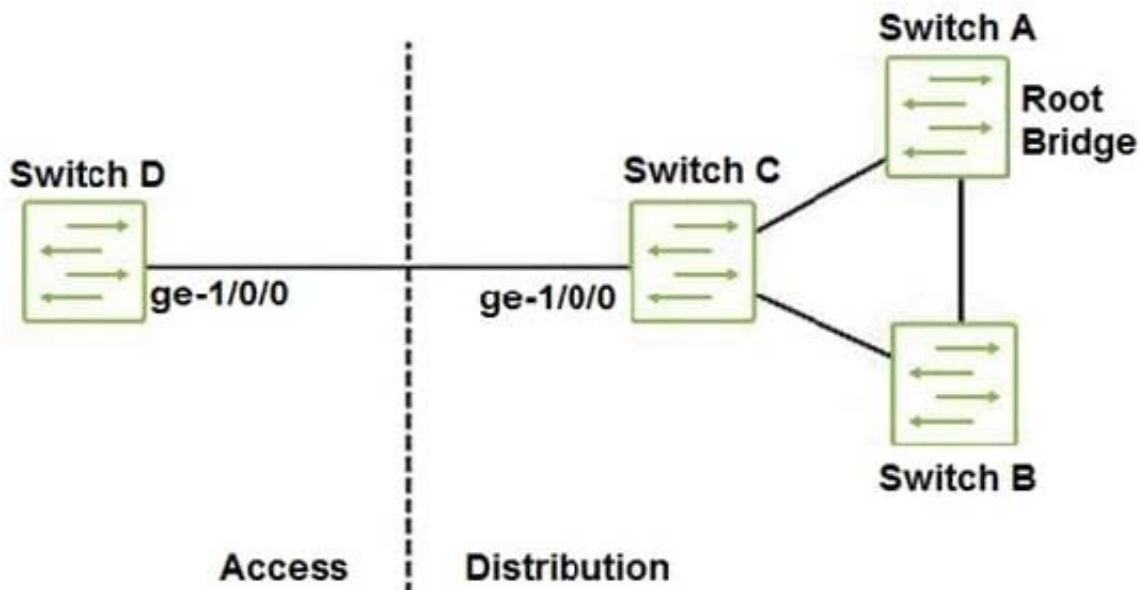
- A. Interface ge-3/0/0.0 has a default metric of 10
- B. Interface xe-0/0/0.0 can only form a single adjacency
- C. Interface xe-0/0/0.0 has a default metric of 10
- D. Interface ge-1/0/0.0 can only form a single adjacency

Correct Answer: D

---

**QUESTION 2**

Click the Exhibit button.



In the network shown in the exhibit, all switches are configured with the default STP root bridge priority, and Switch A has been selected as root. You recently added the older Switch D into the network as an access switch, and notice it has taken over as root.

Which configuration would solve this problem?

- A.
 

```
[edit protocols rstp]
user@switchC# show
interface ge-1/0/0 {
    edge;
}
```
- B.
 

```
[edit protocols rstp]
user@switchD# show
interface ge-1/0/0 {
    no-root-port;
}
```
- C.
 

```
[edit protocols rstp]
user@switchC# show
interface ge-1/0/0 {
    no-root-port;
}
```
- D.
 

```
[edit protocols rstp]
user@switchC# show
interface ge-1/0/0 {
    bpdu-timeout-action {
        block;
    }
}
```

- A. Option A
- B. Option B
- C. Option C
- D. Option D

Correct Answer: C

Reference: [https://www.juniper.net/documentation/en\\_US/junos/topics/reference/configuration-statement/no-root-port-edit-protocols-stp.html](https://www.juniper.net/documentation/en_US/junos/topics/reference/configuration-statement/no-root-port-edit-protocols-stp.html)

---

### QUESTION 3

Which RSVP object allows LSRs to influence path selection?

- A. record route object
- B. explicit route object
- C. hop object
- D. session object

Correct Answer: D

---

### QUESTION 4

Which statement about a virtual-router type of routing instance is correct?

- A. It is used to separate large networks into smaller administrative entities
- B. It is the only routing instance type supported on Junos devices
- C. It is used in Layer 3 VPN implementations
- D. It is used to create and maintain separate routing and forwarding tables

Correct Answer: D

---

### QUESTION 5

Which two functions are performed by the OSPF designated router? (Choose two.)

- A. It advertises link-state information to the AS
- B. It designates some routers as inactive when not needed
- C. It forms adjacencies with all the other OSPF routers on the link

D. It chooses the backup designated router

Correct Answer: AC

Reference: <https://sites.google.com/site/amitsciscozone/home/juniper-junos/junos--ospf-designated-router>

[Latest JN0-362 Dumps](#)

[JN0-362 Study Guide](#)

[JN0-362 Exam Questions](#)