

JN0-362^{Q&As}

Service Provider Routing and Switching - Specialist (JNCIS-SP)

Pass Juniper JN0-362 Exam with 100% Guarantee

Free Download Real Questions & Answers **PDF** and **VCE** file from:

<https://www.leads4pass.com/jn0-362.html>

100% Passing Guarantee
100% Money Back Assurance

Following Questions and Answers are all new published by Juniper
Official Exam Center

-  **Instant Download** After Purchase
-  **100% Money Back** Guarantee
-  **365 Days** Free Update
-  **800,000+** Satisfied Customers



QUESTION 1

Which statement is true when using MVRP on MX Series devices?

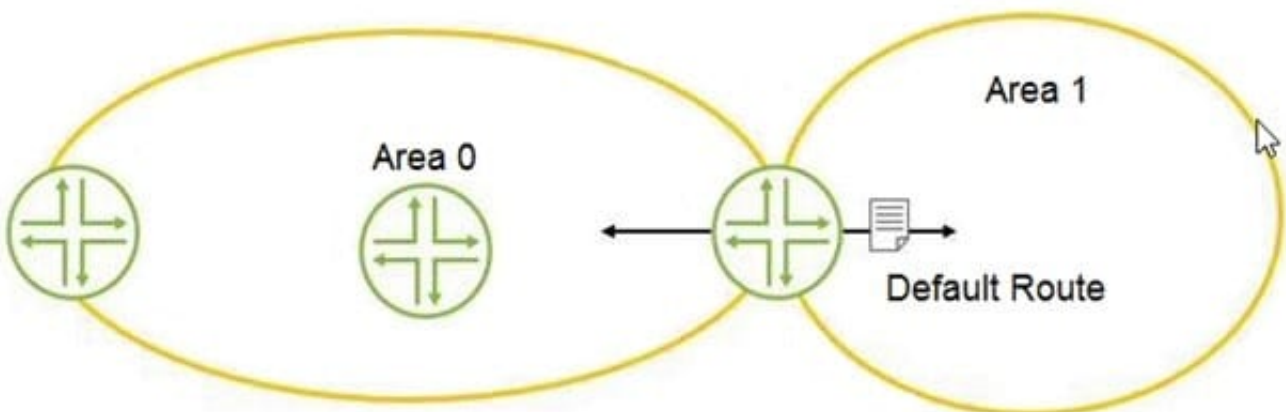
- A. MVRP works with MSTP and RSTP, but not VSTP
- B. MVRP works with RSTP and VSTP, but not MSTP
- C. MVRP works with MSTP and VSTP, but not RSTP
- D. MVRP does not work with MSTP, RSTP, and VSTP

Correct Answer: A

Reference: https://www.juniper.net/documentation/en_US/junos/topics/topic-map/mvrp.html

QUESTION 2

Click the Exhibit button.



You are asked to configure OSPF for the network? Referring to the exhibit, how should Area 1 be configured?

- A. stub area
- B. totally stubby area
- C. not-so-stubby area
- D. backbone area

Correct Answer: A

Reference: https://www.juniper.net/documentation/en_US/junos/topics/topic-map/configuring-ospfareas.html

QUESTION 3

Click the Exhibit button.

```
[edit protocols]
user@router# show
protocols {
  oam {
    gre-tunnel {
      interface gr-1/1/10.1 {
        keepalive-time 10;
        hold-time 30;
      }
    }
  }
}
```

Referring to the exhibit what are two reasons for the configuration stanza? (Choose two.)

- A. to reduce the risk of forwarding traffic through a stateless tunnel
- B. to mark the tunnel down after the hold-time expires
- C. to remove the tunnel interface from inet.0 after the hold-time expires
- D. to mark the tunnel up after the hold-time expires

Correct Answer: AB

QUESTION 4

Click the Exhibit button.

```
[edit protocols bgp]
user@router# show
group ibgp {
    type internal;
    local-preference 125;
    neighbor 10.1.1.1;
    neighbor 10.2.2.2;
    neighbor 10.3.3.3;
}
...
[edit policy-options]
user@router# show
policy-statement bgp-preference {
    term 1 {
        from neighbor 10.1.1.1;
        then {
            local-preference 130;
            accept;
        }
    }
    term 2 {
        from neighbor 10.2.2.2;
        then {
            local-preference 90;
            accept;
        }
    }
}
```

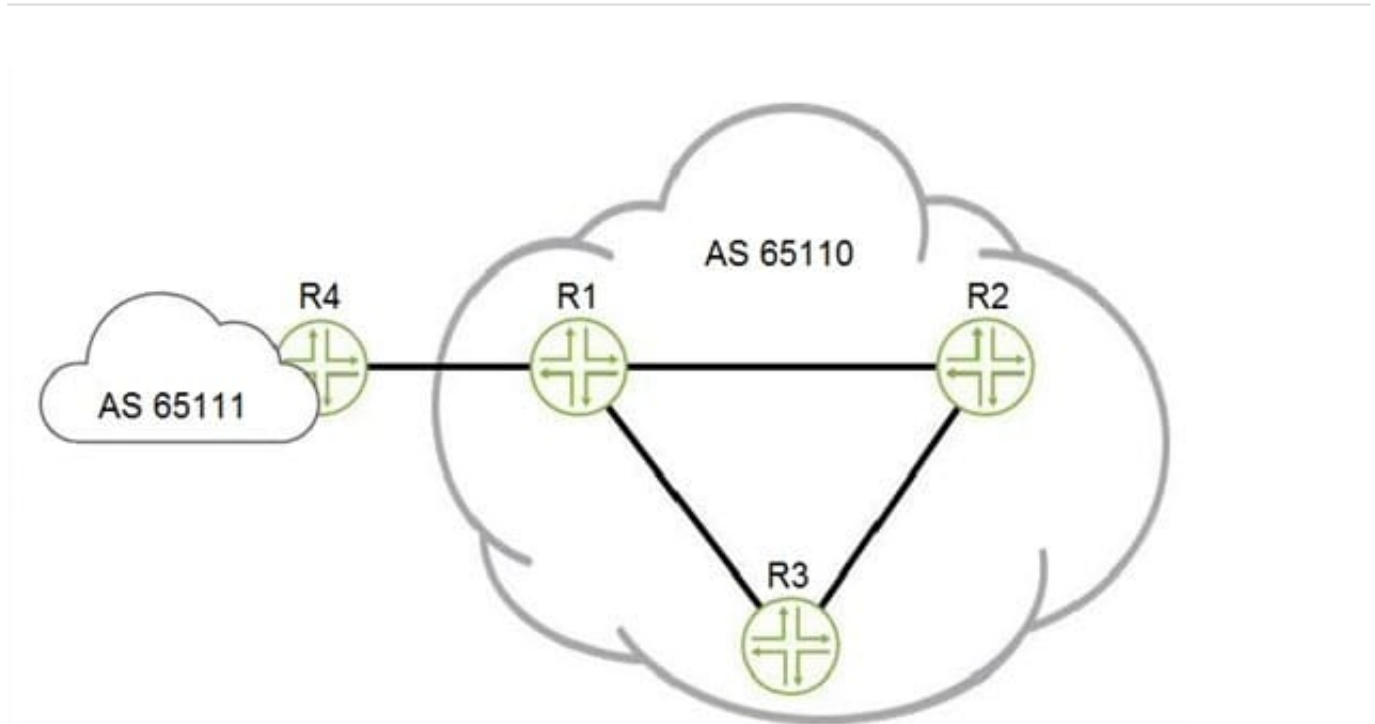
Referring to the exhibit, which statement is correct?

- A. Routes from 10.1.1.1 are more preferred than routes from 10.2.2.2
- B. Routes from 10.2.2.2 are less preferred than the default local preference
- C. Routes from 10.3.3.3 are more preferred than the default local preference
- D. Routes from 10.2.2.2 are less preferred than routes from 10.3.3.3

Correct Answer: C

QUESTION 5

Click the Exhibit button.



Referring to the exhibit, which two statements are true? (Choose two.)

- A. The BGP peering between R1 and R4 should use loopback interface addresses
- B. The BGP peering between R1 and R4 should use physical interface addresses
- C. The BGP peerings between R1, R2, and R3 should use loopback interface addresses
- D. The BGP peerings between R1, R2, and R3 should use physical interface addresses

Correct Answer: BC

[JN0-362 VCE Dumps](#)

[JN0-362 Practice Test](#)

[JN0-362 Study Guide](#)