

## JN0-361<sup>Q&As</sup>

Service Provider Routing and Switching, Specialist Exam

### Pass Juniper JN0-361 Exam with 100% Guarantee

Free Download Real Questions & Answers **PDF** and **VCE** file from:

<https://www.leads4pass.com/jn0-361.html>

100% Passing Guarantee  
100% Money Back Assurance

Following Questions and Answers are all new published by Juniper  
Official Exam Center

- ⚙️ **Instant Download** After Purchase
- ⚙️ **100% Money Back** Guarantee
- ⚙️ **365 Days** Free Update
- ⚙️ **800,000+** Satisfied Customers



## QUESTION 1

Which three functions are performed by an OSPF area border router (ABR)? (Choose three)

- A. flooding Summary LSAs to connected areas
- B. flooding ASBR Summary LSAs to connected areas
- C. generating all Router LSAs for connected neighbors
- D. performing summarization on routes headed to Area 0
- E. flooding NSSA External LSAs to Area 0

Correct Answer: ABD

---

## QUESTION 2

You have an OSPF network. On certain applications and links, you need OSPF recovery to be faster than can be provided by OSPF timers. Which protocol would meet this requirement?

- A. BFD
- B. OSPFv3
- C. GRES
- D. NSR

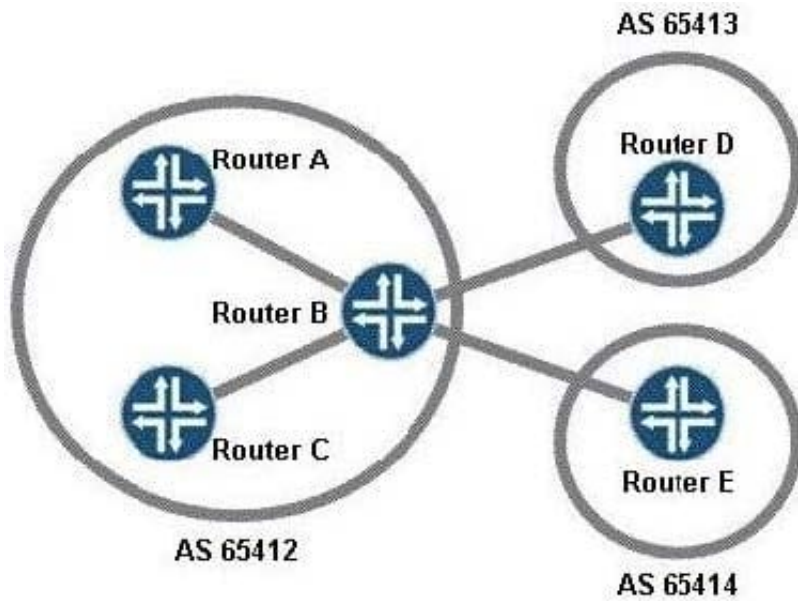
Correct Answer: A

Bidirectional Forwarding Detection (BFD) accomplishes this task for a number of protocols, including OSPF.

---

## QUESTION 3

Click the Exhibit button.



In the exhibit, all routers are sending routes to Router B. Which routes will be advertised from Router B to Router E?

- A. BGP routes learned from Router A only
- B. BGP routes learned from Router D only
- C. BGP routes learned from Routers A and C only
- D. BGP routes learned from Routers A, C, and D only

Correct Answer: D

**QUESTION 4**

Which three statements correctly describe IBGP and EBGP interaction? (Choose three.)

- A. IBGP is used within an AS, whereas EBGP is used between two different ASs.
- B. EBGP peering is normally loopback-based to provide tolerance for interface or link failures.
- C. By default, EBGP updates the next-hop attribute, whereas IBGP does not.
- D. IBGP speakers can re-advertise IBGP-learned or EBGP-learned routes to other IBGP speakers.
- E. EBGP speakers can re-advertise IBGP-learned or EBGP-learned routes to other EBGP speakers.

Correct Answer: ACE

**QUESTION 5**

What is the default interval for a VRRP advertisement?

- A. 1 second

- B. 2 seconds
- C. 10 seconds
- D. 30 seconds

Correct Answer: A

By default, the master router sends VRRP advertisement packets every second to all members of the VRRP group. These packets indicate that the master router is still operational. If the master router fails or becomes unreachable, the backup router with the highest priority value becomes the new master router. Reference: [https://www.juniper.net/documentation/en\\_US/junos/topics/task/configuration/vrrp-master-router-advertisement-interval-configuring.html](https://www.juniper.net/documentation/en_US/junos/topics/task/configuration/vrrp-master-router-advertisement-interval-configuring.html)

[JN0-361 PDF Dumps](#)

[JN0-361 Practice Test](#)

[JN0-361 Braindumps](#)