

JN0-348^{Q&As}

Enterprise Routing and Switching, Specialist

Pass Juniper JN0-348 Exam with 100% Guarantee

Free Download Real Questions & Answers **PDF** and **VCE** file from:

<https://www.lead4pass.com/jn0-348.html>

100% Passing Guarantee
100% Money Back Assurance

Following Questions and Answers are all new published by Juniper
Official Exam Center

-  **Instant Download** After Purchase
-  **100% Money Back** Guarantee
-  **365 Days** Free Update
-  **800,000+** Satisfied Customers



QUESTION 1

Which two statements describe NSR? (Choose two.)

- A. NSR requires GRES to function properly.
- B. NSR provides routing loop protection.
- C. NSR rapidly detects link failures.
- D. NSR provides high availability with multiple Routing Engines.

Correct Answer: AD

QUESTION 2

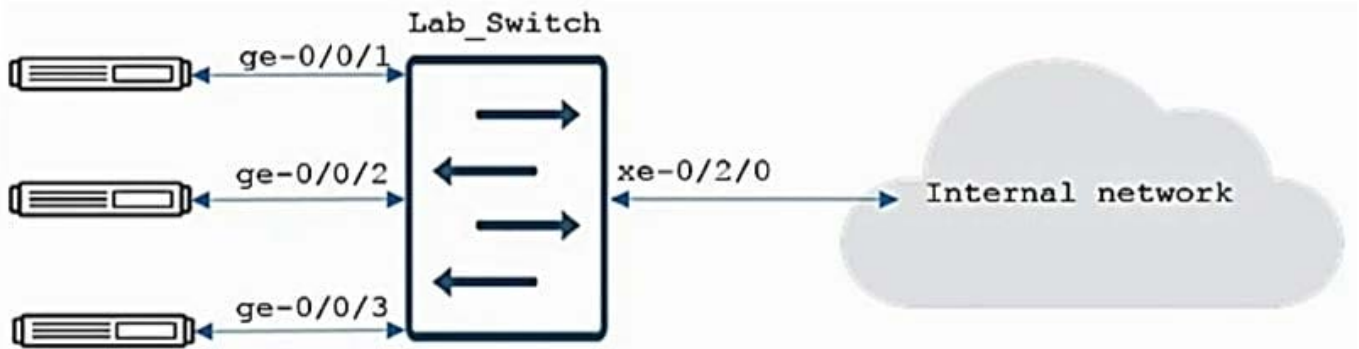
Which statement is correct about trunk ports?

- A. Trunk ports must have an IRB assigned to accept VLAN tagged traffic.
- B. By default, trunk ports accept only VLAN tagged traffic.
- C. By default, a trunk port can have only a single VLAN assigned.
- D. trunk ports must have an IRB assigned to accept untagged traffic.

Correct Answer: B

QUESTION 3

Click the Exhibit button.



```
user@Lab_Switch> show spanning-tree interface
Spanning-tree is not enabled at global level.
```

```
user@Lab_Switch> show interfaces descriptions
Interface      Admin Link Description
ge-0/0/1       up    up Lab Port 1
ge-0/0/2       up    up Lab Port 2
ge-0/0/3       up    up Lab Port 3
xe-0/2/0       up    up internal network
```

You want to prevent rogue BPDUs from lab devices reaching the internal through the Lab_Switch device. Referring to the exhibit, what should be done to accomplish this task?

- A. Configure the three lab ports as edge ports
- B. Configure an input filter on interface xe-0/2/0 to discard the RSTP packets
- C. Configure the three lab ports under the protocols layer2-control bpdu-block hierarchy on the switch
- D. Configure protocols rstp with the bpdu-block-on-edge parameter for interface xe-0/2/0

Correct Answer: C

QUESTION 4

Click the Exhibit button.

```
[edit routing-options]
user@host# show
static {
    defaults {
        preference 180;
    }
    route 0.0.0.0/0 {
        next-hop 172.30.25.1;
        qualified-next-hop 172.30.25.5 {
            preference 7;
        }
    }
}
```

Which statement is true about the configuration shown in the exhibit?

- A. The preference for the 172.30.25.1 next hop is 5.
- B. The preferred next hop is 172.30.25.5.
- C. The preference for the 172.30.25.1 next hop is 7.
- D. 172.30.25.1 is the preferred next hop.

Correct Answer: B

QUESTION 5

Which statement is true when using LAGs with an EX4300?

- A. Speeds on member links can differ.
- B. Member links must be contiguous.
- C. Half duplex is supported on the LAG.
- D. You can have up to 16 member links per LAG.

Correct Answer: D

[JN0-348 VCE Dumps](#)

[JN0-348 Practice Test](#)

[JN0-348 Exam Questions](#)