

JN0-333^{Q&As}

Security, Specialist (JNCIS-SEC)

Pass Juniper JN0-333 Exam with 100% Guarantee

Free Download Real Questions & Answers **PDF** and **VCE** file from:

<https://www.leads4pass.com/jn0-333.html>

100% Passing Guarantee
100% Money Back Assurance

Following Questions and Answers are all new published by Juniper
Official Exam Center

- ⚙️ **Instant Download** After Purchase
- ⚙️ **100% Money Back** Guarantee
- ⚙️ **365 Days** Free Update
- ⚙️ **800,000+** Satisfied Customers



QUESTION 1

Which statement is true about Perfect Forward Secrecy (PFS)?

- A. PFS is used to resolve compatibility issues with third-party IPsec peers.
- B. PFS is implemented during Phase 1 of IKE negotiations and decreases the amount of time required for IKE negotiations to complete.
- C. PFS increases security by forcing the peers to perform a second DH exchange during Phase 2.
- D. PFS increases the IPsec VPN encryption key length and uses RSA or DSA certificates.

Correct Answer: C

QUESTION 2

Which host-inbound-traffic security zone parameter would allow access to the REST API configured to listen on custom TCP port 5080?

- A. http
- B. all
- C. xnm-clear-text
- D. any-service

Correct Answer: D

QUESTION 3

After an SRX Series device processes the first packet of a session, how are subsequent packets for the same session processed?

- A. They are processed using fast-path processing.
- B. They are forwarded to the control plane for deep packet inspection.
- C. All packets are processed in the same manner.
- D. They are queued on the outbound interface until a matching security policy is found.

Correct Answer: A

QUESTION 4

Click the Exhibit button.

You are trying to create a security policy on your SRX Series device that permits HTTP traffic from your private 172.25.11.0/24 subnet to the Internet. You create a policy named permit-http between the trust and untrust zones that permits HTTP traffic.

When you issue a commit command to apply the configuration changes, the commit fails with the error shown in the exhibit.

Which two actions would correct the error? (Choose two.)

```
[edit security from-zone trust to-zone untrust]
user@host# show
policy permit-http {
match {
source-address 172.25.11.0/24;
destination-address any;
application http;
}
then {
permit;
}
}

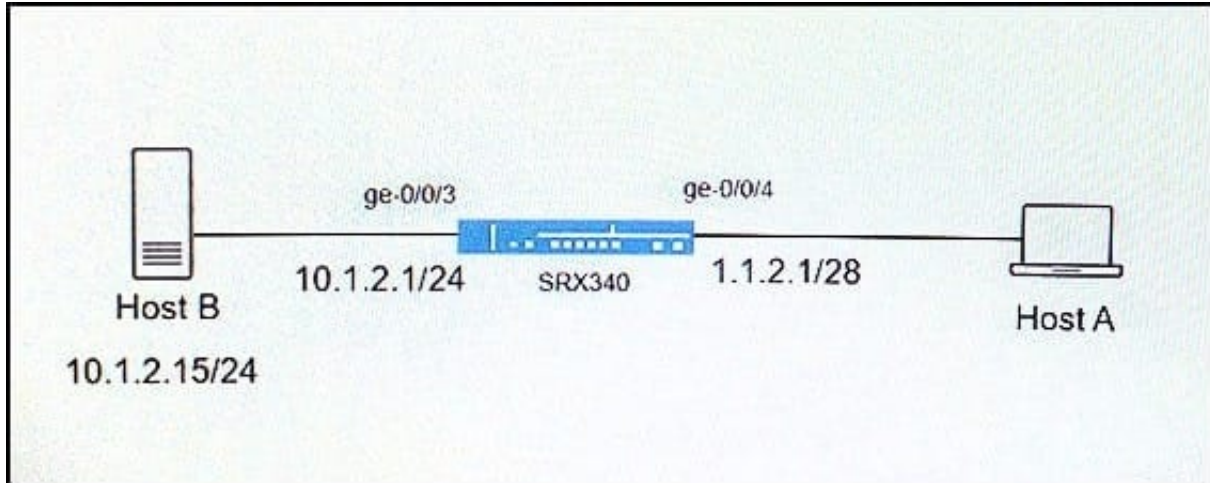
[edit security policies from-zone trust to-zone untrust]
user@host# commit
[edit security policies from-zone trust to-zone untrust policy
permit-http match application]
'http'
application or application-set must be defined
error: commit failed: (statements constraint check failed)
```

- A. Create a custom application named http at the [edit applications] hierarchy.
- B. Execute the Junos commit full command to override the error and apply the configuration.
- C. Modify the security policy to use the built-in junos-http application.
- D. Issue the rollback 1 command from the top of the configuration hierarchy and attempt the commit again.

Correct Answer: BC

QUESTION 5

Click the Exhibit button.



Host A is attempting to connect to Host B using the domain name, which is tied to a public IP address. All attempts to connect to Host B have failed. You have examined the configuration on your SRX340 and determined that a NAT policy is required.

Referring to the exhibit, which two NAT types will allow Host A to connect to Host B? (Choose two.)

- A. source NAT
- B. NAT-T
- C. destination NAT
- D. static NAT

Correct Answer: CD

[JN0-333 PDF Dumps](#)

[JN0-333 VCE Dumps](#)

[JN0-333 Braindumps](#)