

HPE6-A49^{Q&As}

Aruba Certified Design Expert 8 Written Exam

Pass HP HPE6-A49 Exam with 100% Guarantee

Free Download Real Questions & Answers **PDF** and **VCE** file from:

<https://www.leads4pass.com/hpe6-a49.html>

100% Passing Guarantee
100% Money Back Assurance

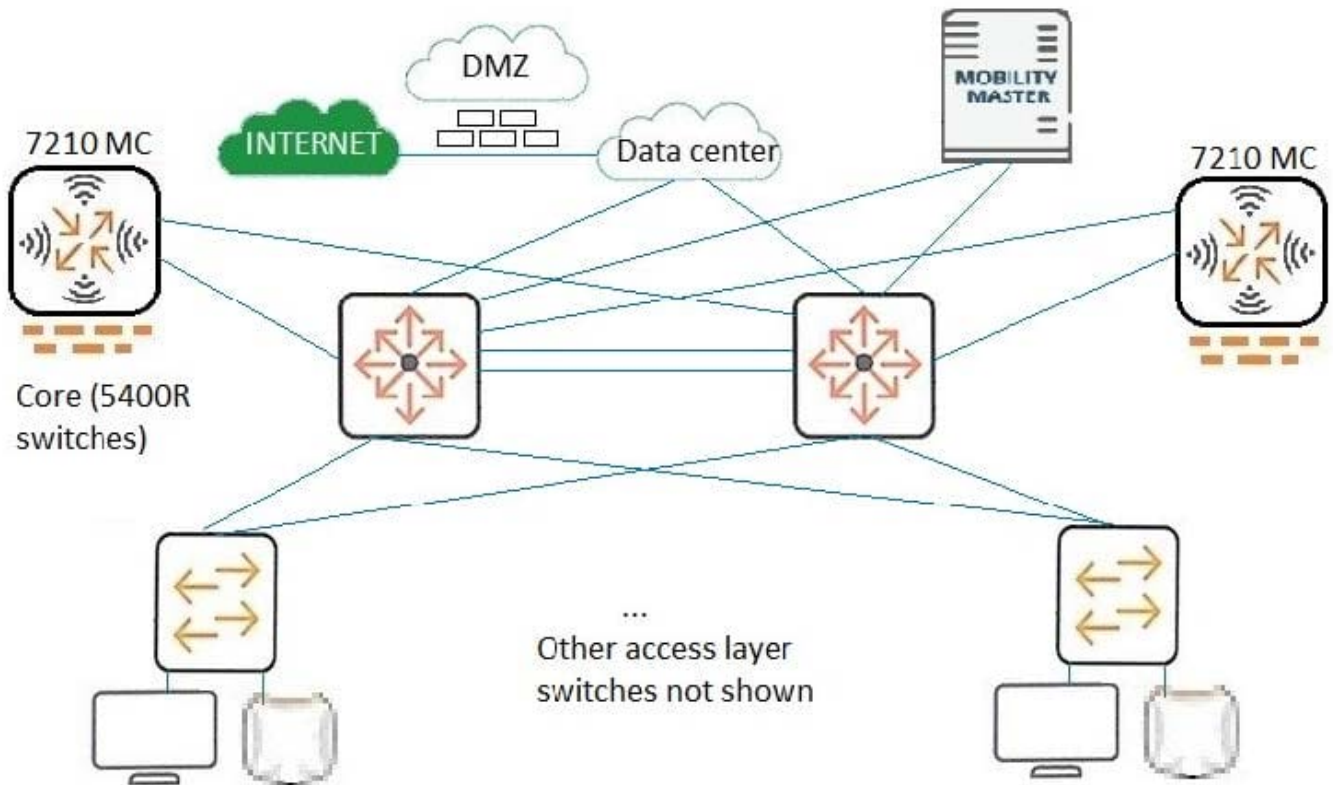
Following Questions and Answers are all new published by HP Official Exam Center

-  **Instant Download** After Purchase
-  **100% Money Back** Guarantee
-  **365 Days** Free Update
-  **800,000+** Satisfied Customers



QUESTION 1

Refer to the exhibit.



A customer needs a network upgrade. The customer has these availability requirements for wireless access:

One MC and one core switch can fail with immediate, stateful failover for client connections.

Network upgrades can occur without the requirement of a maintenance window.

The exhibit shows the architecture plan.

Which technologies should the architect recommend?

- A. Clustering on MCs and VRRP on Core switches
- B. VRRP on MCs and VSF on Core switches
- C. VRRP on both MCs and Core switches
- D. Clustering on MCs and VSF on Core switches

Correct Answer: A

QUESTION 2

Case study

A retailer needs a wireless and wired network upgrade, as well as an authentication and access control solution for a network that includes a main office with a three-floor building and six branch sites. The branch users all use resources at the main corporate office. Branch office employees will use wireless connections. At the main office, employees use wired and wireless connections. The customer wants the strongest authentication for employee wireless connections. It is also important that the MC role-based firewall can implement consistent access controls on employee connections no matter where the employees connect and no matter how they connect (wirelessly or, at the main site, wired). The customer also needs to provide complimentary wireless access for guests. Guest should be redirected to a portal, through which they can register and login. The customer would like two SSIDs, CompanyXEmployee and CompanyXGuest. The company wants to divide employees in two groups, managers and staff. In the corporate network, managers should only have access to Server Group Managers and staff should only have access to Server Group Staff. Each server group includes necessary services such as domain and DHCP, as well as servers that the employees access to do their jobs. All employees should also have access to the Internet. Guests should only have HTTP and HTTPS access, and only to the Internet.

The customer has: a maximum of 1000 employee devices a maximum of 100 guest devices at the same time

500 devices on wired ports at the main site, which will be supported by 12 new AOS-Switches (mostly employee laptops, as well as a few non-802.1X capable printers, which should just communicate with print servers) The devices used by employees include 450 company-issued laptops, which the company wants to screen for security issues and violations of security policies. All authentications are assumed to be concurrent.

To fulfill the requirements for the wireless network upgrade, the architect plans to propose: 5 RAPs at each of 6 branch sites 60 APs at the main site

The architect will also propose an MM and ClearPass. The architect still needs to plan the Mobility Controllers (MCs). The customer requires high availability for wireless services and redundancy for the MCs. If a single MC fails, the network must continue to function without impact. If an MC fails, the customer must also receive a replacement component for the failed component by the next business day so that their IT staff can install it and get the network back to normal operation as soon as possible. Software upgrades must also be seamless, without the introduction of any downtime for wireless services, and the customer needs to be able to obtain the latest software over the lifetime of the solution for the next several years.

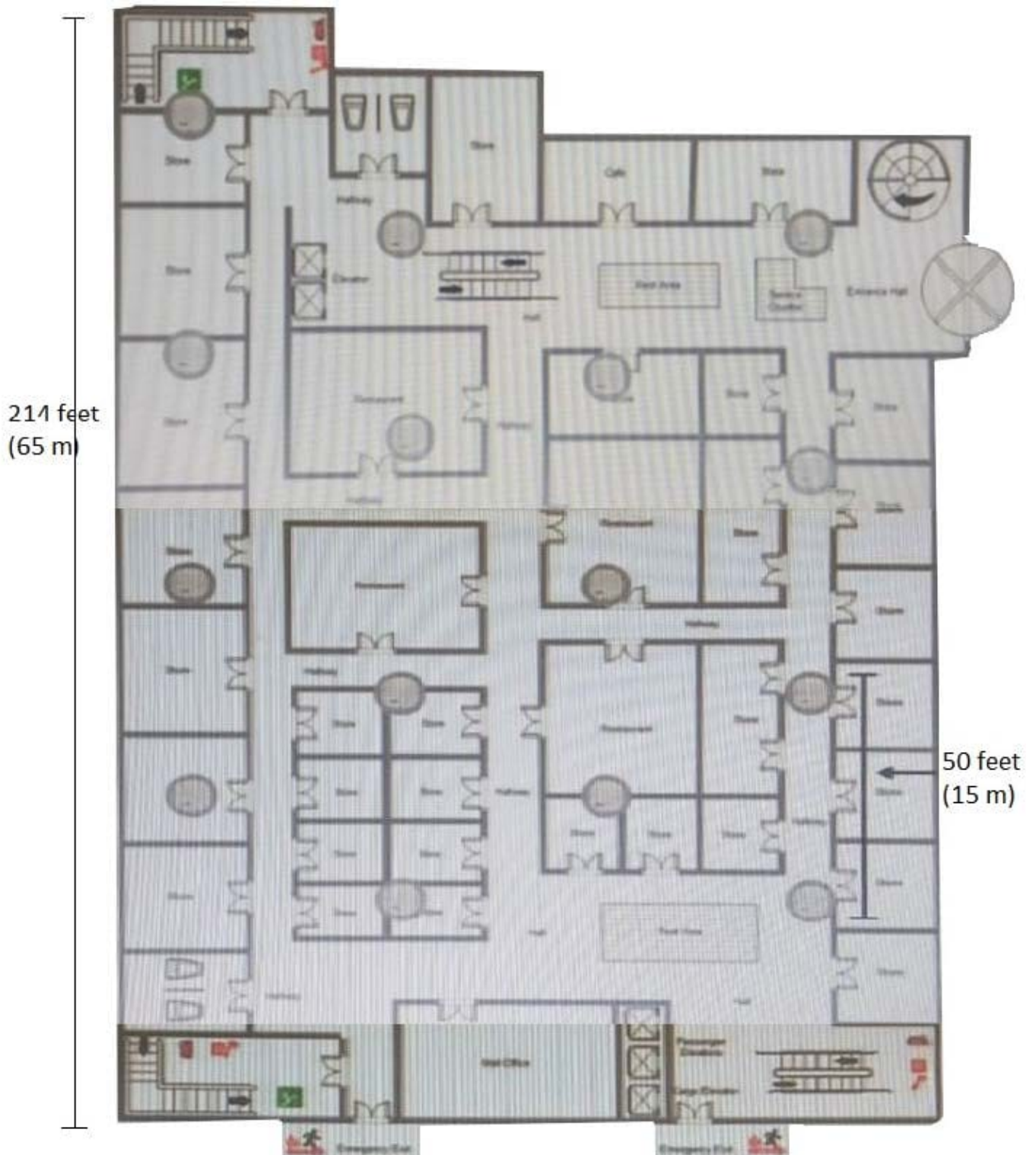
Which plan for authentication meets the customer needs?

- A. Employee SSID = WPA2-802.1X, Guest SSID = WPA2-PSK, Wired edge ports = No authentication
- B. Employee SSID = WPA2-802.1X, Guest SSID = Captive portal, Wired edge ports = No authentication
- C. Employee SSID = WPA2-802.1X, Guest SSID = Captive portal, Wired edge ports = 802.1X + MAC-Auth
- D. Employee SSID = WPA2-PSK, Guest SSID = MAC-Auth, Wired edge ports = MAC-Auth

Correct Answer: B

QUESTION 3

Refer to the exhibit.



A mall has an existing Aruba solution with 15 AP-335s. The mall now wants to add Meridian and location-based services, in particular blue dot wayfinding. The customer plans to use the built-in beacon in the existing AP radios. These Meridian licenses have been proposed: 1x Aruba Meridian Maps 1x Aruba Meridian Blue Dot Nav Which concern should the architect raise about this plan?

- A. Separate beacons should be deployed to provide proper coverage for wayfinding.
- B. Only the Blue Dot Nav license is required to meet the customer requirements.

- C. The customer requires wireless sensors to manage the beacons in the AP radios.
- D. The existing AP radios do not support beacon functionality.

Correct Answer: A

QUESTION 4

What is one reason that an architect might choose to use pico-cell coverage rather than overhead in a stadium?

- A. to avoid major rewiring and construction concerns
- B. to save money by using less powerful and less expensive APs in the deployment
- C. to support a higher device density with a higher level of channel reuse
- D. to maximize coverage per-AP through the use of calculated directional antennas

Correct Answer: C

QUESTION 5

Refer to the exhibit.

| Line# | Part Number | Description | Manufacturer | Unit Price | Quantity | Total | Price List |
|-------|-------------|--|--------------------------|-------------|----------|------------------|----------------------|
| 1.00 | JX918A | Aruba AirWave DL360 Professional Edition Hardware Appla | Hewlett Packard Enter... | \$37,995.00 | 2 | \$75,990.00 | USA Price List (USD) |
| 1.01 | H5ASSE | Aruba 1Y-FC NBO Exch AW DL360 PRO SVC [for JX918A] | Hewlett Packard Enter... | \$7,524.00 | 2 | \$15,048.00 | USA Price List (USD) |
| 2.00 | JW546AAE | Aruba LOC-AW Aruba Airwave with RAPIDS and VisualRF 1... | Hewlett Packard Enter... | \$75.00 | 1000 | \$75,000.00 | USA Price List (USD) |
| 2.01 | H2YV3E | Aruba 1Y FC 24x7 Airwave 1 Dev E-LTU SVC [for JW546A] | Hewlett Packard Enter... | \$12.00 | 1000 | \$12,000.00 | USA Price List (USD) |
| | | Quote Total | | | | \$178,038 | |

A customer needs an AirWave solution that can manage 1000 devices. The customer wants a hardware solution and active/standby redundancy for the solution.

The exhibit shows the BOM that the architect has created.

Which corrections should the architect make?

- A. Change the active appliance to an Enterprise appliance.
- B. Add 1000 additional AirWave managed device licenses.

C. Change both of the appliances to Enterprise appliance.

D. Add a failover license for 1000 managed devices.

Correct Answer: C

[HPE6-A49 PDF Dumps](#)

[HPE6-A49 Study Guide](#)

[HPE6-A49 Braindumps](#)