

HPE6-A49^{Q&As}

Aruba Certified Design Expert 8 Written Exam

Pass HP HPE6-A49 Exam with 100% Guarantee

Free Download Real Questions & Answers **PDF** and **VCE** file from:

<https://www.leads4pass.com/hpe6-a49.html>

100% Passing Guarantee
100% Money Back Assurance

Following Questions and Answers are all new published by HP Official Exam Center

-  **Instant Download** After Purchase
-  **100% Money Back** Guarantee
-  **365 Days** Free Update
-  **800,000+** Satisfied Customers



QUESTION 1

A writing closet needs to support 20 APs and 110 wired endpoints. It has four strands of OM3 fiber to the network core 150 feet (45 m) away. The customer wants the links to the network core to support at least 10GbE. The customer also requires no loss in connectivity for the switches in the closet, even with the loss of one link. The architect plans to recommend three 2930M 40G 8SR PoE+ switches, two 4-port SFP+ modules, and two SFP+ SR transceivers.

What should the architect change about the plan?

- A. Add three 10GbE direct attach cables (DACs) or three stacking cables.
- B. Add a stacking module for each switch and three stacking cables.
- C. Change the two SFP+ SR transceivers to SFP+ LRM transceivers.
- D. Add one 4-port SFP+ module and one SFP+ SR transceiver.

Correct Answer: A

QUESTION 2

A customer has critical wired endpoints and wants to minimize the chances they will lose their connection to the network. These endpoints are dual-homed, each with two Ethernet connections that are in a link aggregation.

The architect plans to deploy two 5406R switches in the closet.

What else should the architect specify in the plan?

- A. The 5406R switches are in a VSF fabric; each switch has redundant power supplies, but not redundant management modules.
- B. The 5406R switches are not in a VSF fabric; each switch has redundant power supplies but not redundant management modules.
- C. The 5406R switches are not in a VSF fabric; each switch has redundant power supplies and redundant management modules.
- D. The 5406R switches are in a VSF fabric; each switch has redundant power supplies and redundant management modules.

Correct Answer: D

QUESTION 3

A retailer wants to provide wireless services for guests across a section of store floor, which consists of 82 foot (25m) long aisles of cans and dry food goods. The shelves are six feet (1.8 m) high, and the ceiling height is 13 feet (4 m) high. The architect recommends overhead APs deployed at 40-50 foot (12 to 15 m) intervals every few aisles rather than in every aisle.

What is one factor that justifies this recommendation?

- A. the low transmit power of most guest devices
- B. the low shelf height relative to ceiling height
- C. the aisle length
- D. the low ceiling height

Correct Answer: B

QUESTION 4

An architect has recommended the deployment of RAPs at user home offices to provide access to the corporate LAN.

How should the architect plan the SSID for the RAPs?

- A. Same SSID and security settings as the corporate SSID
- B. any name for the SSID with MAC-Authentication
- C. any name for the SSID, which would be open; WPA2 is used for security
- D. same name used for the corporate SSID, but always with WPA2-Personal security

Correct Answer: A

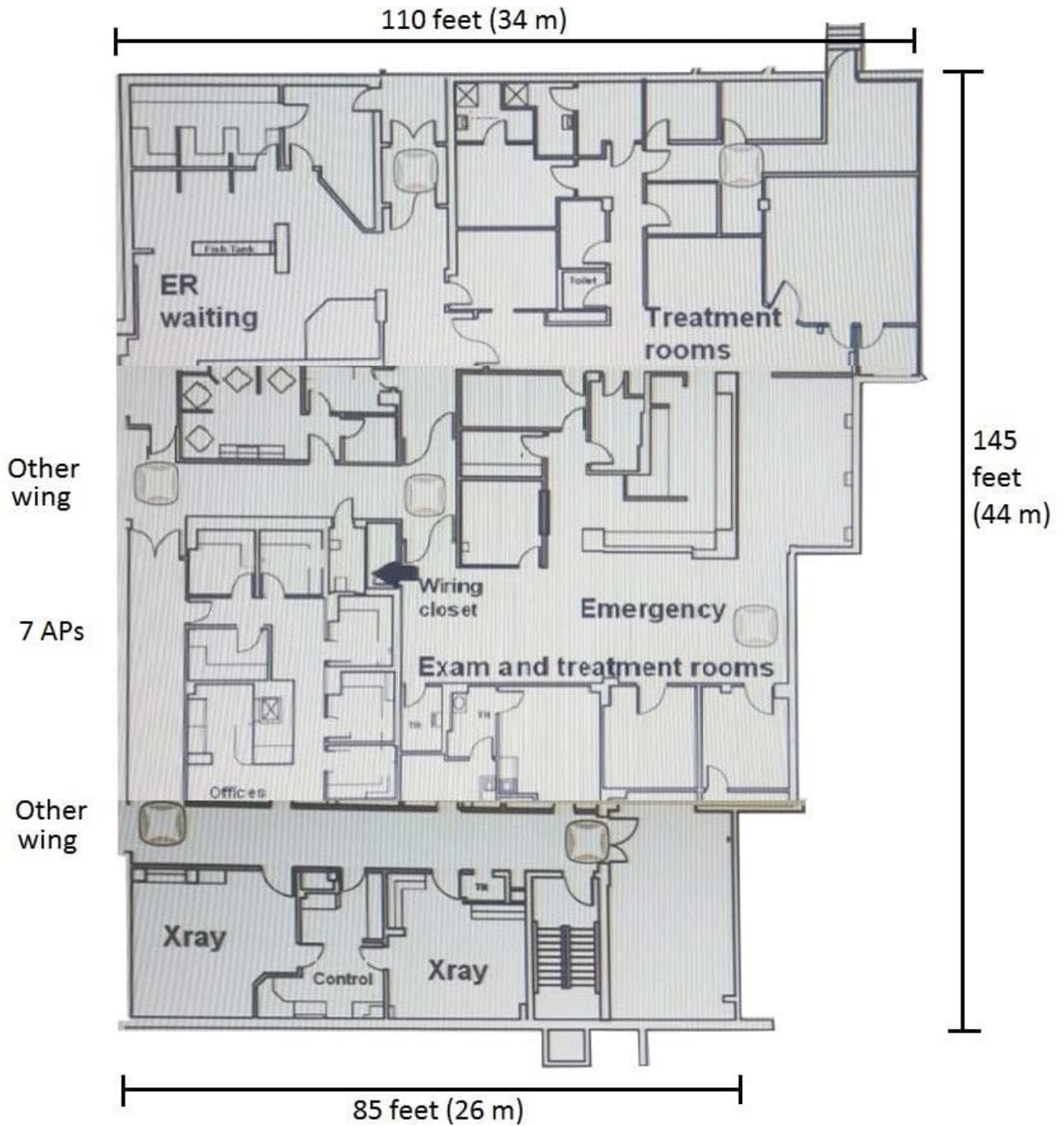
QUESTION 5

A hospital needs an upgrade to 802.11ac for its wireless network, which needs to provide complete coverage. The hospital has a concrete exterior and uses drywalls for all of the interior walls with a few exceptions as mandated for safety. The building has 10 foot (3m) ceilings. The legacy APs were deployed in the hallway, but the customer is open to deploying APs in any room such as reception areas, patient rooms, operating rooms, treatment rooms, and lounges. The wireless network must support wireless medical devices, voice communicators for medical staff, laptops in nurse stations, medical staff tablets, and visitor and patient personal devices. All of these devices support both the 2.4GHz and 5GHz band. The exhibits below show one wing of one floor of the hospital. This wing is about 14,000 square feet (1300 sq. m). This area has up to: 40 concurrent patients and visitors, who might have up to two devices 40 concurrent staff members, who might have up to three devices About 100 medical and other types of wireless devices

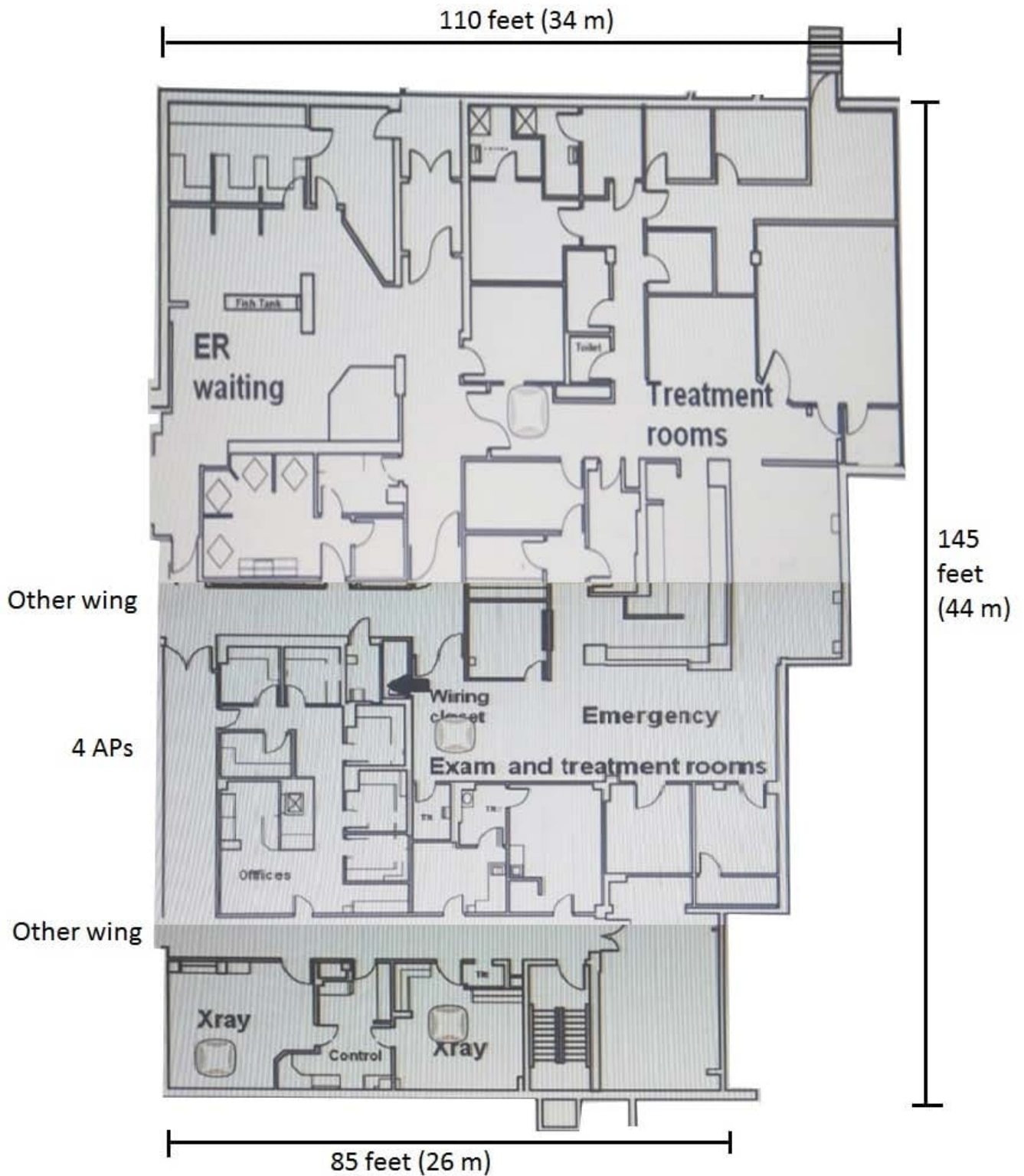
Several of these wireless medical devices are in the X-ray and X-ray control rooms. The architect has already planned to place APs in stairwells on another floor.

Which AP plan for this wing of this floor meets the customer needs?

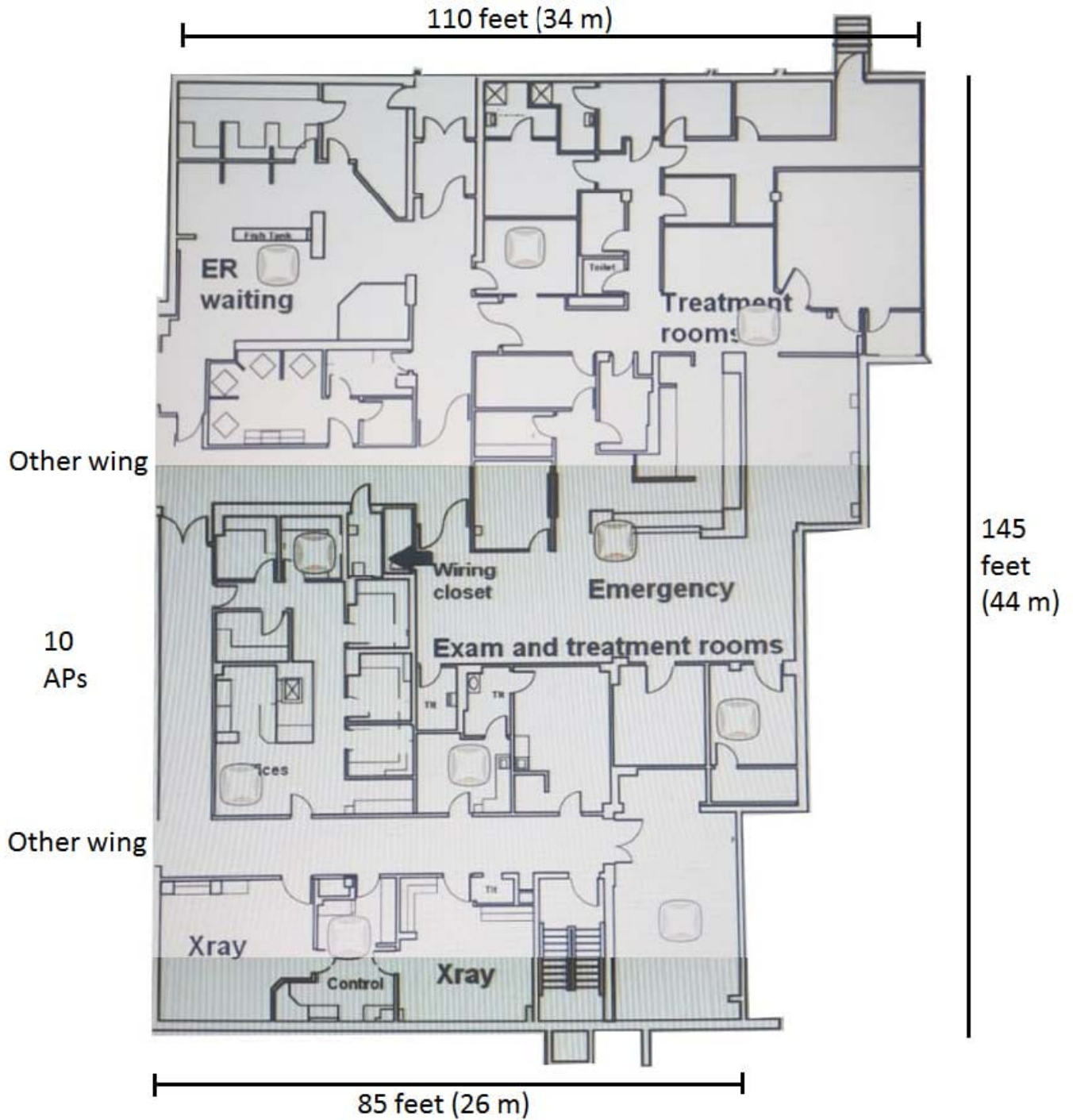
- A.



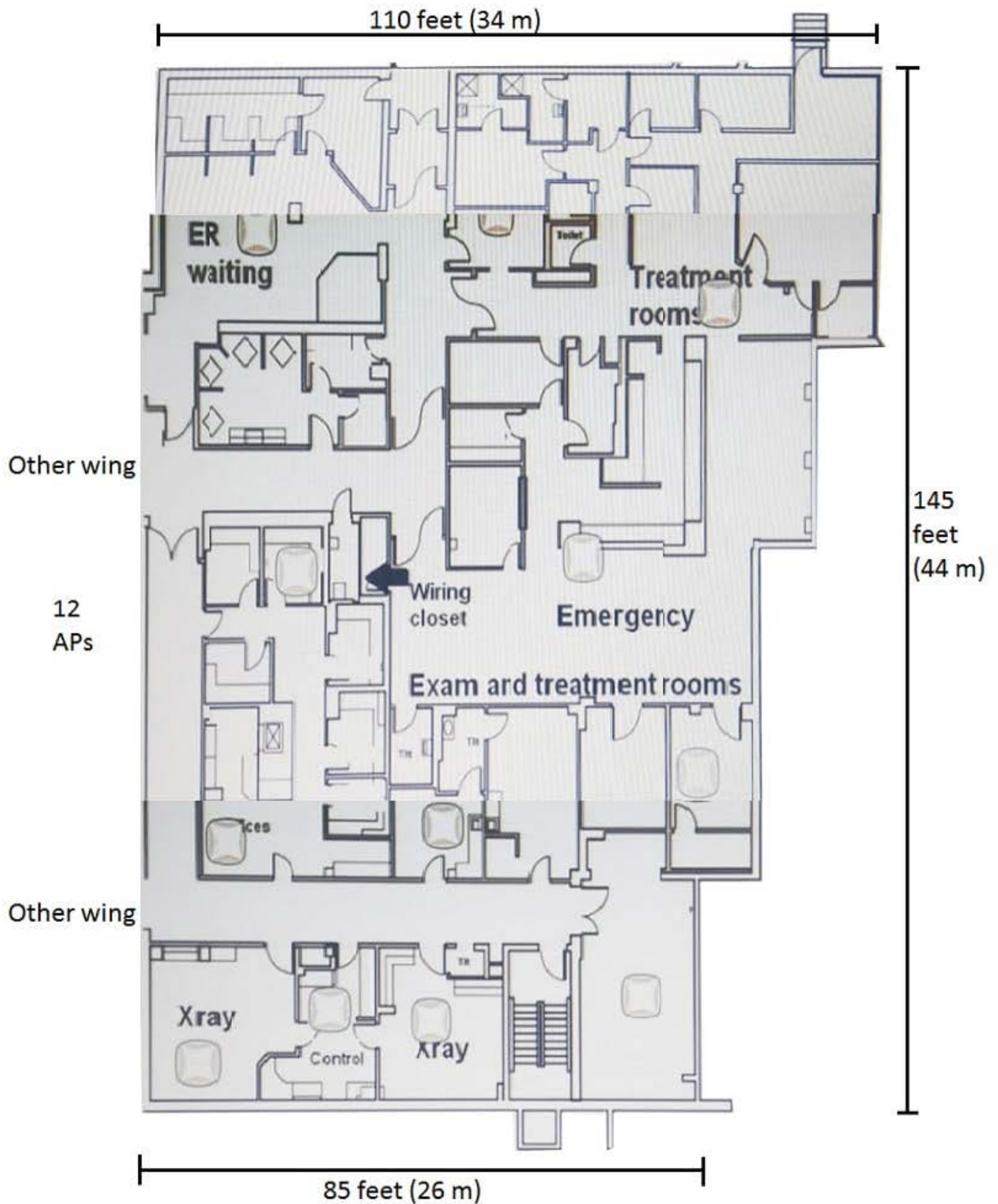
B.



C.



D.



Correct Answer: D

[Latest HPE6-A49 Dumps](#)

[HPE6-A49 Exam Questions](#)

[HPE6-A49 Braindumps](#)