

HPE6-A49^{Q&As}

Aruba Certified Design Expert 8 Written Exam

Pass HP HPE6-A49 Exam with 100% Guarantee

Free Download Real Questions & Answers **PDF** and **VCE** file from:

<https://www.leads4pass.com/hpe6-a49.html>

100% Passing Guarantee
100% Money Back Assurance

Following Questions and Answers are all new published by HP Official Exam Center

-  **Instant Download** After Purchase
-  **100% Money Back** Guarantee
-  **365 Days** Free Update
-  **800,000+** Satisfied Customers



QUESTION 1

The airport needs to support several different SSIDs, including:

four for individual airlines

one for the airport as a whole

one for airport security

The airport security traffic must terminate on different mobility controllers (MCs) from the rest of the airport traffic and be managed entirely separately. Airlines also want to terminate traffic at their MCs.

The airport MCs and airport security MCs require redundancy while airlines do not.

Which plan for MCs and Mobility Master (MM) meets the needs of this scenario?

- A. one MCs for the airport, one MC for airport security, and one MC for each of the four airlines with its own SSID, all controlled by the same MM
- B. one MCs for the airport, a cluster of MCs for airport security controlled by a pair of MMs, and one MC for each of the four airlines
- C. a cluster of MCs for the airport, a cluster of MCs for airport security, and one MC for each of four airlines, all controlled by the same MM pair
- D. a cluster of MCs for the airport controlled by an MM pair, a cluster of MCs for airport security controlled by a different MM pair, and one standalone MC for each of the four airlines.

Correct Answer: D

QUESTION 2

A customer has a campus that has expanded to several buildings. The buildings are between 100 and 200 feet (30 m and 61 m) apart and connected with SM fiber. The customer currently has instant APs (IAPs) clusters on several floors of several buildings. The customer has consolidated central resources in a small data center in one of the buildings.

The customer would like a more centralized architecture in which all wireless traffic is tunneled to the data center and IAPs are managed centrally.

What should the architect recommend?

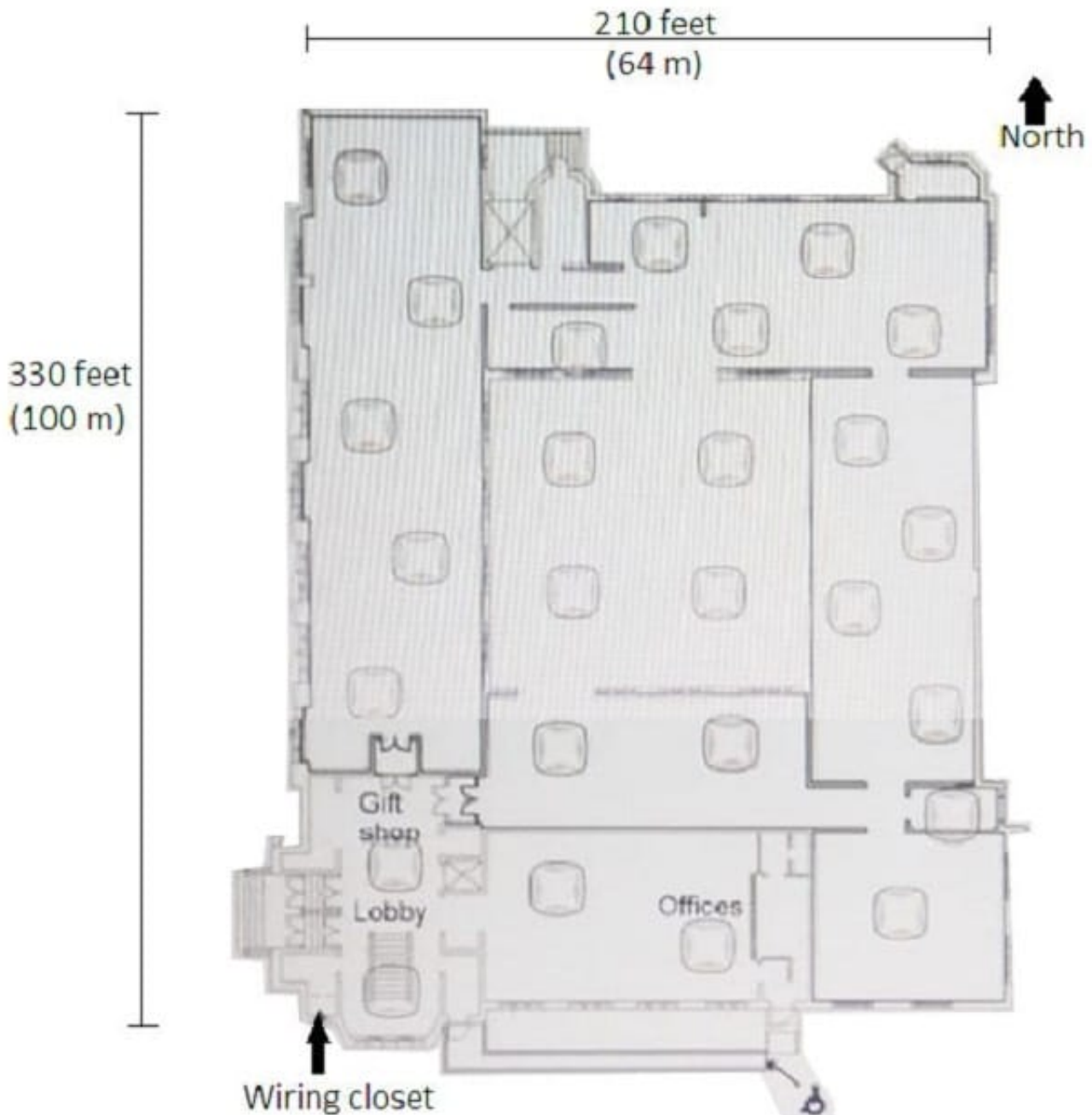
- A. Deploy Aruba MCs in a central location, and convert IAPs to CAPs.
- B. Purchase a license for a Virtual Mobility Master (VMM).
- C. Deploy Aruba AirWave in a central location.

D. Purchase a subscription for Aruba Central device management.

Correct Answer: D

QUESTION 3

Refer to the exhibit.



A museum wants to add full 802.11ac wireless coverage across the building, which is about 210 feet (64 m) by 330 feet (100m). The museum has 15-foot (4,6 m) ceilings and stone interior walls. The network needs to support up to 600 wireless guest devices. The exhibit also shows a preliminary plan for AP locations. The museum has eight Ethernet

drops in the lobby and gift shop, but has otherwise not been wired.

What is one recommendation that the architect should make to ensure a successful deployment?

- A. use of directional antennas to avoid lost signal
- B. addition of a writing closet closer to the north side
- C. use of at least CAT5 cable to connect to the APs
- D. addition of about 10 APs to achieve adequate density

Correct Answer: C

QUESTION 4

Refer to the exhibit.

Line#	Part Number	Description	Manufacturer	Unit Price	Quantity	Total	Price List
1.00	JW736A	Aruba 7205(US) 2-port 10GBASE-X (SFP+) Controller	Hewlett Packard Enter...	\$12,995.00	2	\$25,990.00	USA Price List (USD)
1.01	H3CW3E	Aruba 1Y FC NBD Exch 7205 Controller SVC [for JW736A]	Hewlett Packard Enter...	\$12,002.00	2	\$14,004.00	USA Price List (USD)
1.02	JW091A	SFP-10GB-SR 10GBASE-SR SFP+ 850nm Pluggable LC Conn.	Hewlett Packard Enter...	\$1,245.00	4	\$4,980.00	USA Price List (USD)
2.00	J323A	Aruba 2930 40GB Smart Rate PoE+ 1 slot Switch	Hewlett Packard Enter...	\$9,359.00	24	\$224,616.00	USA Price List (USD)
2.01	HT6U1E	HPE 3Y FC 4H Exch Aruba2930MSRPOE SVC [for JL323A]	Hewlett Packard Enter...	\$2,911.00	24	\$69,864.00	USA Price List (USD)
2.02	JL086A	Aruba X372 54VDC 680W Power Supply	Hewlett Packard Enter...	\$639.00	24	\$15,336.00	USA Price List (USD)
2.03	JL086A ABA	INCLUDED: Power Cord - U.S. localization	Hewlett Packard Enter...	Incl.	24		USA Price List (USD)
2.04	JL325A	Aruba 2930 2-port Stacking Module	Hewlett Packard Enter...	\$1,019.00	24	\$24,456.00	USA Price List (USD)
2.05	JL083A	Aruba 3810M/2930M 4SFP+ MACsec Module	Hewlett Packard Enter...	\$1,259.00	16	\$20,144.00	USA Price List (USD)
2.06	J9150D	Aruba 10G SFP+ LC SR 300m MMF Transceiver	Hewlett Packard Enter...	\$1,040.00	16	\$16,640.00	USA Price List (USD)
3.00	J9821A	Aruba 5406R z12 Switch	Hewlett Packard Enter...	\$2,419.00	2	\$4,838.00	USA Price List (USD)
3.01	H1MT0E	HPE 3Y FC 24x7 Aruba 5406R z12 Switch SVC [for J9821A]	Hewlett Packard Enter...	\$4,094.00	2	\$8,188.00	USA Price List (USD)
3.02	U4832E	HPE Networks 54xx/82xx z1 Startup SVC [for J9821A]	Hewlett Packard Enter...	\$2,325.00	2	\$4,650.00	USA Price List (USD)
3.03	J9828A	Aruba 5400R 700W PoE+ z12 PSU	Hewlett Packard Enter...	\$799.00	2	\$1,598.00	USA Price List (USD)
3.04	J9828A ABA	INCLUDED: Power Cord - U.S. localization	Hewlett Packard Enter...	Incl.	2		USA Price List (USD)
3.05	J9993A	Aruba 8p 1G/10GbE SFP+ v3 z12 Mod	Hewlett Packard Enter...	\$14,799.00	4	\$19,196.00	USA Price List (USD)
3.06	J91500	Aruba 10G SFP+ LC SR 300m MMF Transceiver	Hewlett Packard Enter...	\$1,040.00	20	\$20,800.00	USA Price List (USD)
3.07	J4858D	Aruba 1G SFP LC SX 500m MMF Transceiver	Hewlett Packard Enter...	\$325.00	4	\$1,300.00	USA Price List (USD)

3.08	J9996A	Aruba 2p 40GbE QSFP+ v3 zl2 Mod	Hewlett Packard Enter...	\$6,799.00	4	\$27,196.00	USA Price List (USD)
3.09	JL308A	Aruba 40G QSFP+ LC BiD 150m MMF 2-strand Transceiver	Hewlett Packard Enter...	\$1,095.00	2	\$2,190.00	USA Price List (USD)
4.00	JH234A	HPE X242 40G QSFP+ to QSFP+ 1m DAC Cable	Hewlett Packard Enter...	\$419.00	2	\$838.00	USA Price List (USD)
5.00	JZ033A	Aruba AP-345 (US) Unified AP	Hewlett Packard Enter...	\$1,395.00	192	\$267,840.00	USA Price List (USD)
5.01	H9RQ5E	Aruba 1Y FC NBD Exch AP-345 SVC [for JZ033A]	Hewlett Packard Enter...	\$61.00	192	\$11,712.00	USA Price List (USD)
6.00	JY791A	Aruba MM-HW-1K Mobility Master 1000 AP HW Appliance	Hewlett Packard Enter...	\$17,995.00	2	\$35,990.00	USA Price List (USD)
6.01	H6QE5E	Aruba 1Y FC NBD Exch MM-HW-1K Mob1000SVC [for JY7]	Hewlett Packard Enter...	\$2,770.00	2	\$5,540.00	USA Price List (USD)
6.02	JW124A	PC-AC-NA North America AC Power Cord	Hewlett Packard Enter...	\$5.00	4	\$20.00	USA Price List (USD)
6.03	JW471AAE	Aruba LIC-ENT Enterprise (LIC-AP LIC-PEF LIC-RFP and LIC-...)	Hewlett Packard Enter...	\$300.00	192	\$57,600.00	USA Price List (USD)
6.04	H2XW3E	Aruba 1Y FC 24x7 License On Bundle SVC [for JW471AAE]	Hewlett Packard Enter...	\$46.00	192	\$8,832.00	USA Price List (USD)
6.05	JW088A	SFP-SX 1000BASE-SX SFP 850nm LC Connector Pluggable...	Hewlett Packard Enter...	\$395.00	4	\$1,580.00	USA Price List (USD)
7.00	J9734A	Aruba 2920/2930M 0.5m Stacking Cable	Hewlett Packard Enter...	\$149.00	15	\$2,235.00	USA Price List (USD)
Quote Total						\$888,173	

The network architect has created the BOM shown in the exhibit for a complete new wired and wireless solution for a customer. This solution will support 6000 wireless clients and 900 wired clients. The customer wants to discover and manage every component of the network in AirWave, including MMs, MCs, APs, and switches.

How many AirWave licenses does the architect need to add?

- A. 30
- B. 222
- C. 6930
- D. 7122

Correct Answer: A

QUESTION 5

A customer has multiple medium and large branch sites, each of which requires between 8 and 16 APs and supports between 200 and 600 wireless clients. Every branch site has an internet connection, which it uses to reach the central data center. The customer would prefer the WAN links to be optimized in the solution. Each site handles between 1 and 2 Gbps of traffic, most of which goes to the central data center. The data center has 7210 controllers for terminating the VPN connections.

Which branch office solution best meets the customer needs?

- A. CAPs and branch office controllers with an SD-WAN license
- B. IAPs and no branch office controllers
- C. CAPs and branch office controllers
- D. RAPs and no branch office controllers

Correct Answer: B

[Latest HPE6-A49 Dumps](#)

[HPE6-A49 VCE Dumps](#)

[HPE6-A49 Exam Questions](#)