

# HPE6-A29<sup>Q&As</sup>

Aruba Certified Mobility Professional 6.4

## Pass HP HPE6-A29 Exam with 100% Guarantee

Free Download Real Questions & Answers **PDF** and **VCE** file from:

<https://www.leads4pass.com/hpe6-a29.html>

100% Passing Guarantee  
100% Money Back Assurance

Following Questions and Answers are all new published by HP Official Exam Center

-  **Instant Download** After Purchase
-  **100% Money Back** Guarantee
-  **365 Days** Free Update
-  **800,000+** Satisfied Customers



## QUESTION 1

What are aliases used for?

- A. improve controller performance
- B. simplify the configuration process
- C. tie IP addresses to ports
- D. assign rules to policies
- E. assign policies to roles

Correct Answer: B

---

## QUESTION 2

Which of the following parameters can be specified in a rule for AP classification? (Choose three)

- A. SSID of an AP
- B. Number of clients connected to an AP.
- C. SNR of an AP.
- D. Operating mode of an AP
- E. Discovering APs

Correct Answer: ACE

---

## QUESTION 3

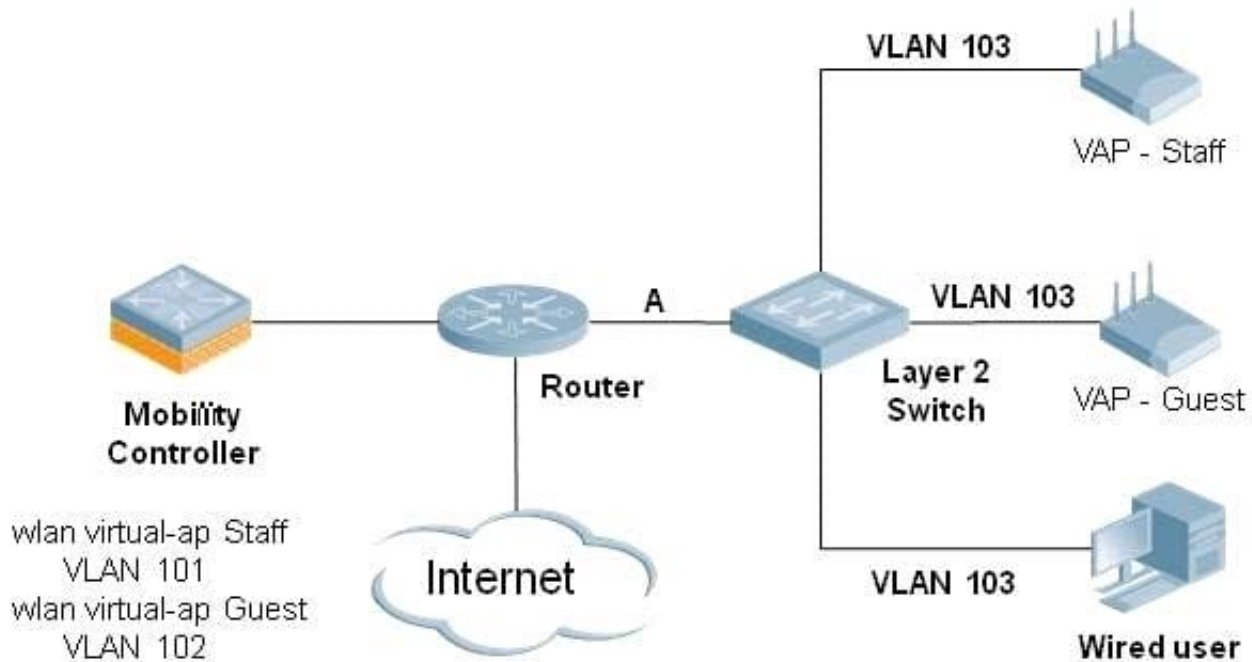
With CPsec disabled, which encryption protocol does a tunnel mode campus AP use on client traffic ?

- A. TKIP and AES
- B. It is provisioned by the Administrator
- C. WEP and AES
- D. WEP, TKIP, and AES
- E. No encryption is used

Correct Answer: E

---

## QUESTION 4



In the above diagram, the system shows two Aruba access points and a wired user.

Which VLAN(s) do NOT need to be configured on link A between the L2 switch and router to support the wireless users?

- A. 101 and 102
- B. 101 and 103
- C. 102 and 103
- D. only 101
- E. only 103

Correct Answer: A

**QUESTION 5**

Examine the Aruba Mobility Controller configuration: Netdestination corp-net Network 10.0.0.0 255.0.0.0ip access-list session guest-users User host 10.0.1.1 svc-http permit User host 10.0.1.4 svc-dns permit Any alias corp-net deny User user any permit The company uses 10.0.0.0/8 for its internal IP addressing. Guest users are assigned IP addressing by the

controller that uses the 192.168.1.0/24 subnet. This firewall policy is applied to the default role in the AAA profile for guest access.

Which statement is correct in regards to what an authenticated guest or corporate employee user can access?

- A. Guest users can access any resource in the corporate network.
- B. Corporate employee can access the guest users.
- C. Guest users cannot access the internet
- D. Corporate users can access all resources in the network

Correct Answer: D

[Latest HPE6-A29 Dumps](#)

[HPE6-A29 VCE Dumps](#)

[HPE6-A29 Study Guide](#)