

HP2-Z34^{Q&As}

Building HP FlexFabric Data Centers

Pass HP HP2-Z34 Exam with 100% Guarantee

Free Download Real Questions & Answers **PDF** and **VCE** file from:

<https://www.leads4pass.com/hp2-z34.html>

100% Passing Guarantee
100% Money Back Assurance

Following Questions and Answers are all new published by HP Official Exam Center

-  **Instant Download** After Purchase
-  **100% Money Back** Guarantee
-  **365 Days** Free Update
-  **800,000+** Satisfied Customers



QUESTION 1

An administrator creates two VPN instances on an HP Comware switch, in addition to the public instance. The switch implements routing protocols and MPLS. Which statement is correct about the routing tables and Label Forwarding Information Bases (LFIBs) maintained by the switch?

- A. The switch uses a single routing table and maintains a separate LFIB for each VPN instance
- B. The switch maintains a separate routing table and LFIB for each VPN instance, but the public tables automatically include entries from the other instances.
- C. The switch maintains a separate routing table and LFIB for each VPN instance.
- D. The switch maintains a separate routing table for each VPN instance and uses a single LFIB

Correct Answer: D

QUESTION 2

Refer to the exhibit An HP Comware switch is configured to support FCoE in Fibre Channel Forwarder (FCF) mode. Server1 should be able to discover storage target1 and target2. but not target3. Assume that the zone-aliases have been configured to reference the FC devices correctly

```
zone name 1
  member zone-alias server1
zone name 2
  member zone-alias target1
zone name 3
  member zone-alias target2
zone name 4
  member zone-alias target3
zone name 5
  member zone-alias target1
  member zone-alias target2
zone name 6
  member zone-alias server1
  member zone-alias target1
  member zone-alias target2
```

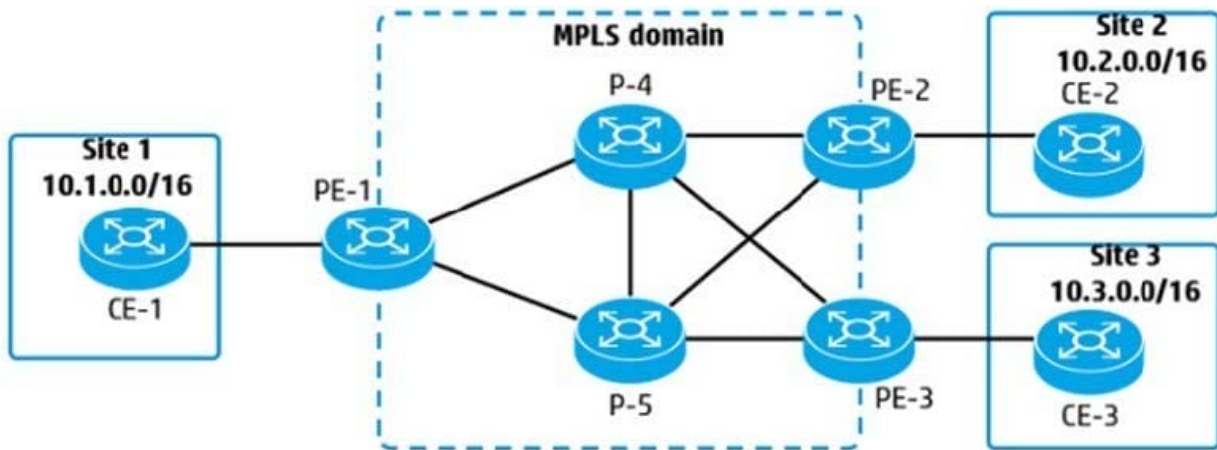
Which zone(s) should be added to the active zoneset?

- A. zone 1, zone 2, and zone 3
- B. zone 1 and zone 5
- C. zone 4
- D. zone 6

Correct Answer: D

QUESTION 3

Refer to the exhibit An administrator is establishing an MPLS domain to allow communication between 10.1.0.0/16, 10.2.0.0/16, and 10.3.0.0/16. The solution will use OSPF routing and LDP. On which PE and P devices should these protocols be configured?



- A. All P and PE devices should be configured with MPLS, but only P devices need OSPF and only PE devices need LDP.
- B. All P and PE devices should be configured with MPLS, LDP, and OSPF.
- C. All P and PE devices should be configured with MPLS, but only PE devices need OSPF and LDP.
- D. All P and PE devices should be configured with MPLS and LDP, but only PE devices need OSPF.

Correct Answer: A

QUESTION 4

Refer to the exhibit A VSAN is being set up on an HP Comware switch that will connect to server Converged Network Adapters (CNAs) and storage systems The administrator is checking the configuration of the VSAN with display commands The exhibit shows the results.

```
<Switch> display fc domain vsan 2
Domain Information of VSAN 2:

Running table information:
  state: Stable
  Switch WWN: 10:00:cc:3e:5f:6d:fc:b1
  Fabric name: 10:00:cc:3e:5f:6d:fc:b1
  Priority: 128
  Domain ID: 10
Configuration information:
  Domain configure: Enable
  Domain auto-reconfigure: Disabled
  Fabric name: 10:00:cc:3e:5f:6d:fc:b1
  Priority: 128
  Domain ID: 10 (preferred)
Principal switch running time information:
  Priority: 128
```

```
<Switch> display zone status vsan 2
VSAN 2:
  Mode: basic
  Default zone: deny
  Distribute: active only
  Hard-zoning: enabled
  Full zoning database
  Zonesets: 0, Zones: 0, Zone-aliases: 0
  Status: free
```

What is a potential issue?

- A. The current zoning configuration does not permit any communication.
- B. The fabric name has been set to the same ID as the switch WWN. which causes conflicts.
- C. The distribute mode for zones has been set to active only, which can cause issues with redundancy.
- D. The domain ID has been set manually to a preferred ID, but this switch does not have the highest priority

Correct Answer: C

QUESTION 5

An HP Comware switch supports FCoE in Fibre Channel Forwarder (FCF) mode. A switch interface Ten1/0/1 connects to a server FCoE Converged Network Adapter (CNA). The CNA transmits normal data traffic, which is tagged for VLANs 4 and 8. and storage traffic for VSAN 2, which is associated with VLAN

20. What is a correct port type and VLAN configuration for Ten 1/0/1?

- A. a hybrid port that has PVID 1 and defines VLANs 4 and 8 as tagged
- B. a trunk port that has PVID 20 and permits VLANs 4. 8. and 20

- C. a hybrid port that has PVID 1, defines VLAN 20 as untagged, and defines VLANs 4 and 8 as tagged
- D. a trunk port that has PVID 1 and permits VLANs 4, 8, and 20

Correct Answer: D

[HP2-Z34 PDF Dumps](#)

[HP2-Z34 VCE Dumps](#)

[HP2-Z34 Exam Questions](#)