

HP0-Y51^{Q&As}

Building HP SDN and FlexNetwork Solutions

Pass HP HP0-Y51 Exam with 100% Guarantee

Free Download Real Questions & Answers **PDF** and **VCE** file from:

<https://www.leads4pass.com/hp0-y51.html>

100% Passing Guarantee
100% Money Back Assurance

Following Questions and Answers are all new published by HP Official Exam Center

-  **Instant Download** After Purchase
-  **100% Money Back** Guarantee
-  **365 Days** Free Update
-  **800,000+** Satisfied Customers



QUESTION 1

HP Unified Wired-Wireless controllers support wireless Intrusion Detection System (IDS)/intrusion prevention system (IPS) features. An HP AP radio is configured to participate in this solution in hybrid mode. Which functions can the hybrid mode radio fulfill?

- A. Can support wireless clients and scan wireless traffic.
- B. It can support wireless clients, scan wireless traffic, and implement countermeasures
- C. It can implement countermeasures and scan wireless traffic.
- D. It can scan wireless traffic and wired traffic.

Correct Answer: C

QUESTION 2

A large shopping center has an HP BYOD solution with these requirements:

User Access Manager (UAM) should provide the portal in which guests register their own accounts.

Guests should only have to register and log in once. After that, the guest device automatically logs in by MAC address.

Each shop has its own SSID.

The administrator wants UAM to display a custom portal page to users based on the SSID to which they connect. What is the proper way to configure this solution?

- A. In the guest access service, bind different SSIDs to different portal pages.
- B. In the global guest registration settings, add an SSID map, which binds SSIDs to portal pages.
- C. In the access service assigned to the BYOD Anonymous account, bind different SSIDs to different portal pages.
- D. In the global portal settings, add an SSID map, which binds SSIDs to portal pages.

Correct Answer: D

QUESTION 3

A company has an HP BYOD solution. The administrator is setting up synchronization of user accounts from Active Directory (AD). The administrator wants User Access Manager (UAM) to organize the user accounts in groups in the

same way that AD does.

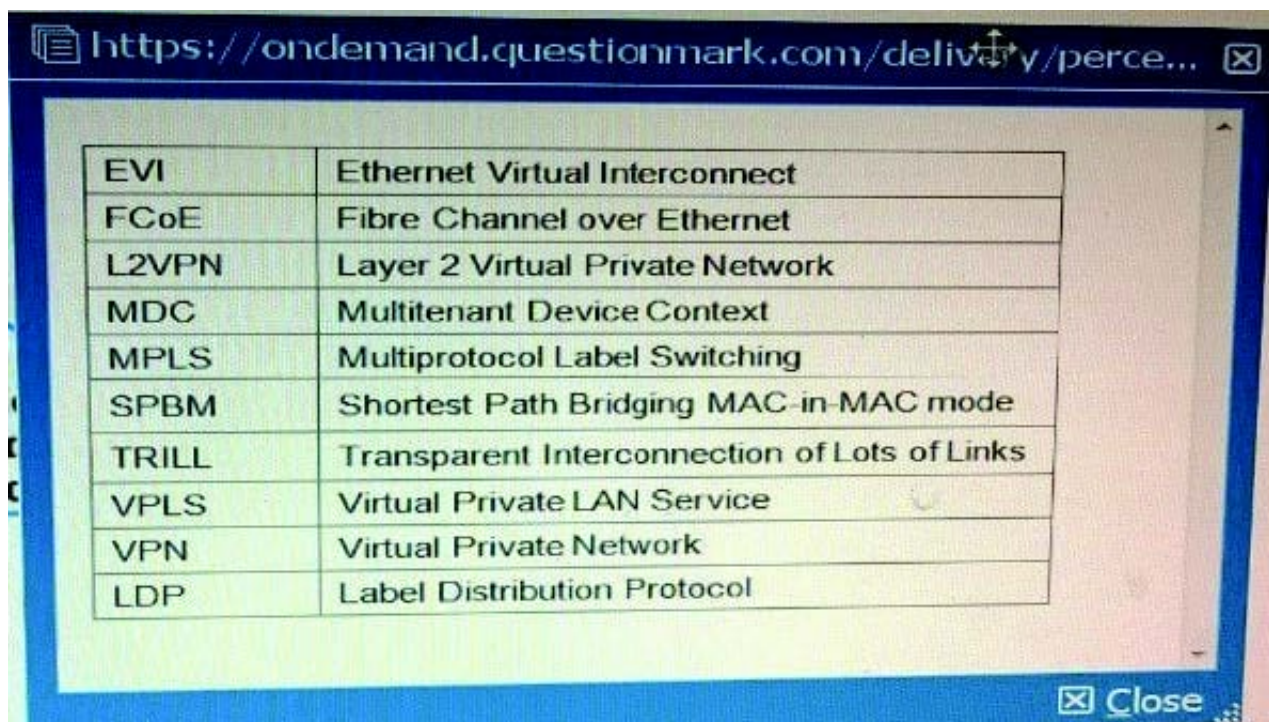
How does the administrator configure this to accomplish the goal?

- A. Establish the LDAP synchronization policy, and then create a user group policy to synchronize the groups and sort the user accounts
- B. In the LDAP Server policy, set the User Group setting to Synchronize by OU, which allows AD to create the groups automatically
- C. Install the UAM agent on the AD server, otherwise, UAM can only synchronize the highest- level group of domain users.
- D. Create every group before setting up the LDAP synchronization policy

Correct Answer: B

QUESTION 4

Table of Acronyms

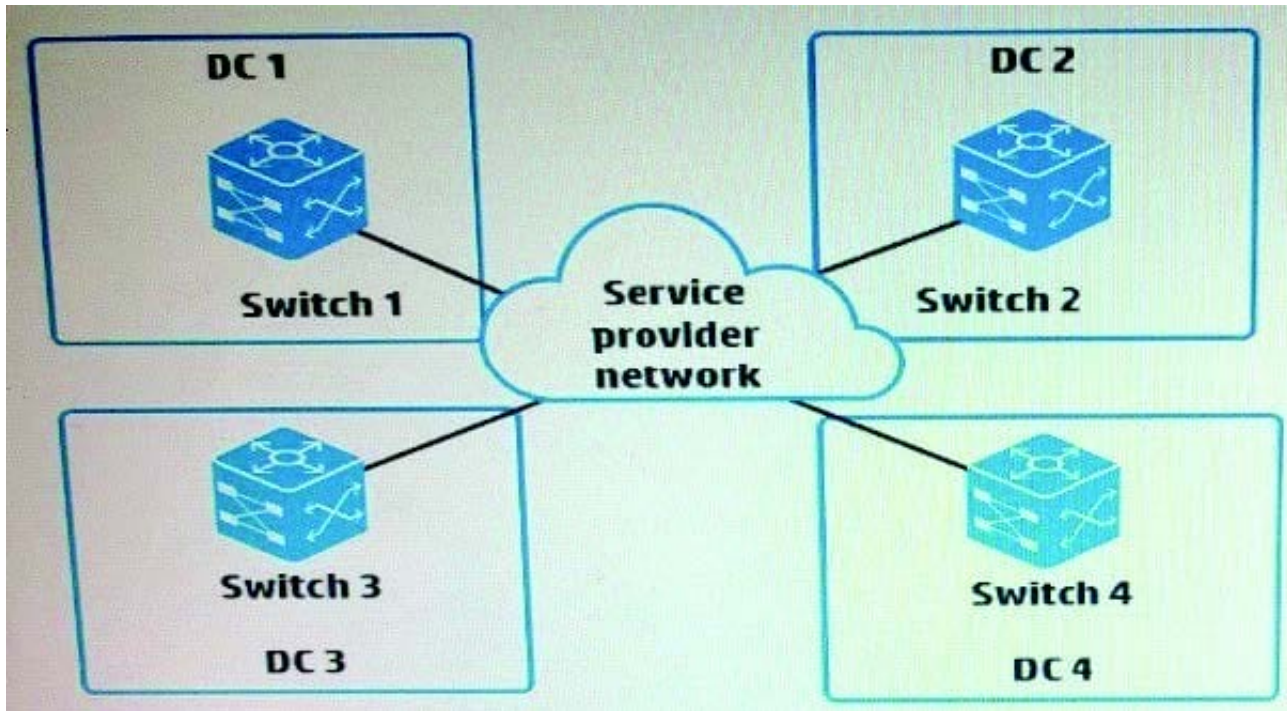


The image shows a screenshot of a web browser window. The address bar displays the URL: <https://ondemand.questionmark.com/delivery/perce...>. The main content area contains a table with two columns: the acronym and the full name of the technology. The table is as follows:

EVI	Ethernet Virtual Interconnect
FCoE	Fibre Channel over Ethernet
L2VPN	Layer 2 Virtual Private Network
MDC	Multitenant Device Context
MPLS	Multiprotocol Label Switching
SPBM	Shortest Path Bridging MAC-in-MAC mode
TRILL	Transparent Interconnection of Lots of Links
VPLS	Virtual Private LAN Service
VPN	Virtual Private Network
LDP	Label Distribution Protocol

At the bottom right of the table, there is a "Close" button with a small icon.

Refer to the exhibit



An administrator wants to connect four data centers using HP EVI. What is the correct setup for the EVI tunnel interfaces?

- A. Three EVI tunnel interfaces on each EVI edge device--one EVI tunnel interface is required for each GRE tunnel in the mesh
- B. One EVI tunnel interface on Switch 1, which will be configured as the ENDP server, and no interfaces on the other switches
- C. Three EVI tunnel interfaces on Switch 1, which will act as the hub, and one EVI tunnel interface each on the other switches
- D. One EVI tunnel interface on each EVI edge device--the devices automatically establish GRE tunnels between these interfaces

Correct Answer: C

QUESTION 5

Refer to the exhibit.

```

HP3800-1# show openflow instance 1 flows

Flow 3
Match
  Incoming Port      : 24
  Source IP         : 10.1.10.0/24
  Ethernet Type     : IP
  Destination IP    : 10.1.20.0/24

Attributes
  Priority           : 29999
  Hard Timeout      : 0 seconds
  Byte Count        : NA
  Flow Table ID     : 100
  Duration           : 24300 seconds
  Idle Timeout      : 60 seconds
  Packet Count      : 10924
  Controller ID     : 1

Hardware Index      : 1
Instructions
  Apply Actions     : 1
  Output            : 1

Flow 4
Match
  Incoming Port      : 24
  Source MAC         : 005056-111111
  Source IP         : 10.1.10.10
  Ethernet Type     : IP
  Destination MAC   : 005056-222222
  Destination IP    : 10.1.20.20

Attributes
  Priority           : 29999
  Hard Timeout      : 0 seconds
  Byte Count        : NA
  Flow Table ID     : 200
  Duration           : 1230 seconds
  Idle Timeout      : 60 seconds
  Packet Count      : 0
  Controller ID     : 1

Software Index      : 1
Instructions
  Apply Actions     : 1
  Output            : 2
  
```

An HP provision switch has OpenFlow table entries indicated in the exhibit.

The switch should forward most traffic between 10.1.10.0/24 and 10.1.20.0/24 on port 1. However any IP traffic between server 1, at 005056-111111 and

10.1.10.10, and server 2, at 005056-222222 and 10.20.20, should be forwarded on port 2.

Which change to the rules let the switch behave as desired?

- A. For flow 3, the table ID is set to 200, and the priority is set to 47000
- B. For flow 4, the priority is set to 47000
- C. For flow 4, the table ID is set to 100, and the priority is set to 47000
- D. For flow 3, the instruction is set to Write Actions output 1

Correct Answer: A