

H31-161^{Q&As}

HCIE-Carrier IP (Written) V2.0

Pass Huawei H31-161 Exam with 100% Guarantee

Free Download Real Questions & Answers **PDF** and **VCE** file from:

<https://www.leads4pass.com/h31-161.html>

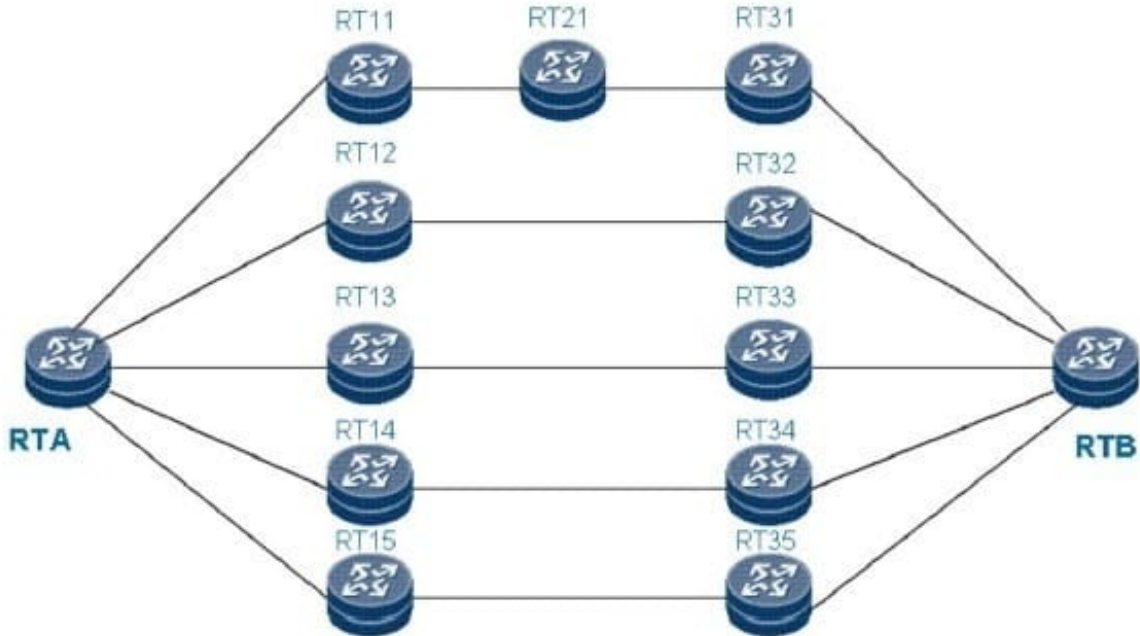
100% Passing Guarantee
100% Money Back Assurance

Following Questions and Answers are all new published by Huawei
Official Exam Center

-  **Instant Download** After Purchase
-  **100% Money Back** Guarantee
-  **365 Days** Free Update
-  **800,000+** Satisfied Customers



QUESTION 1



BFD for RSVP is a mechanism that uses BFD to check the connectivity of RSVP neighbors. As shown in

the figure, TE FRR node protection is deployed to protect a node, the blue path is the primary LSP (RTA -> RTB -> RTC -> RTD -> RTE) and the red one is the bypass LSP (RTB -> RTF -> RTD). Which of the following statements about BFD for RSVP are true?

- A. TE FRR will be triggered only when the link between RTB (acting as the PLR) and RTC (the node under protection) is faulty or RTC is faulty but will not be triggered when the link between RTC and RTD (acting as the MP) is faulty. This problem can be solved by establishing a BFD session between RTB and RTD. In this case, faults may be reported falsely or be missed.
- B. Only RSVP HELLO needs to be enabled if RSVP GR instead of TE FRR is deployed on a network.
- C. BFD for RSVP needs to be enabled only on RTB if you expect to set up a BFD for RSVP session on RTB to check the connectivity between RTB and RTC.
- D. The BFD session triggered by RSVP is for the exclusive use of RSVP.

Correct Answer: A

QUESTION 2

Which statement describes the delay requirement of the voice service for the IP bearer network?

- A. Bearer network delay=50 ms, allowed maximum delay = 100 ms
- B. Bearer network delay=150 ms, allowed maximum delay = 200 ms

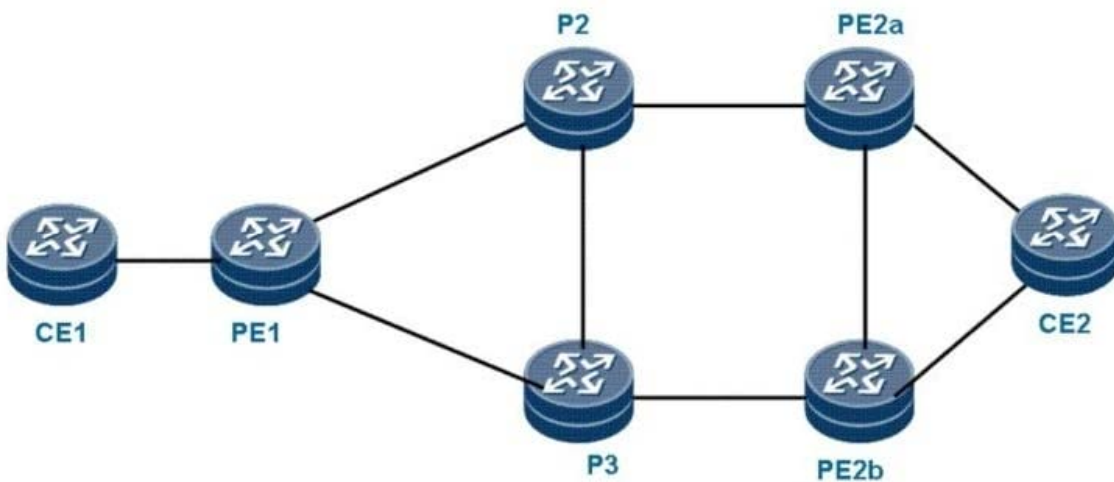
C. Bearer network delay=10s, allowed maximum delay = 20s

D. No strict requirement.

Correct Answer: A

QUESTION 3

In asymmetric dual-homing CE networking, which of the following statements about the VPN are true?



A. RDs in the VPN instances configured on PE 2a and PE 2b must be the same.

B. RDs in the VPN instances configured on PE 2a and PE 2b may be different.

C. RTs in the VPN instances configured on PE 2a and PE 2b must be the same.

D. RTs in the VPN instances configured on PE 2a and PE 2b may be different

Correct Answer: B

QUESTION 4

Which statement about the edge access layer is true?

A. It connects users to the network by providing various access means, and converts the format of information so that the information can be transmitted on the network.

B. Using the packet technology, it provides a comprehensive transport platform that boasts high reliability, quality of service (QoS) assurance, and large capacity.

C. It implements call control. With the softswitch technology as the core, it completes basic realtime call control and connection control.

D. It provides additional value-added services and operation support for established calls

Correct Answer: A

QUESTION 5

Which of the following are conditions for bringing the remote CCC connection Up? (ABE)

- A. The interface that is bound to a CCC connection is physically Up.
- B. MPLS is enabled on the outbound interface of the public network.
- C. MPLS LDP is enabled on the outbound interface of the public network.
- D. If a next hop is specified in CCC configuration, a route to the next hop is available.
- E. If an outbound interface is specified in CCC configuration, the outbound interface is Up.

Correct Answer: ABE

[Latest H31-161 Dumps](#)

[H31-161 PDF Dumps](#)

[H31-161 VCE Dumps](#)