

H31-161^{Q&As}

HCIE-Carrier IP (Written) V2.0

Pass Huawei H31-161 Exam with 100% Guarantee

Free Download Real Questions & Answers **PDF** and **VCE** file from:

<https://www.leads4pass.com/h31-161.html>

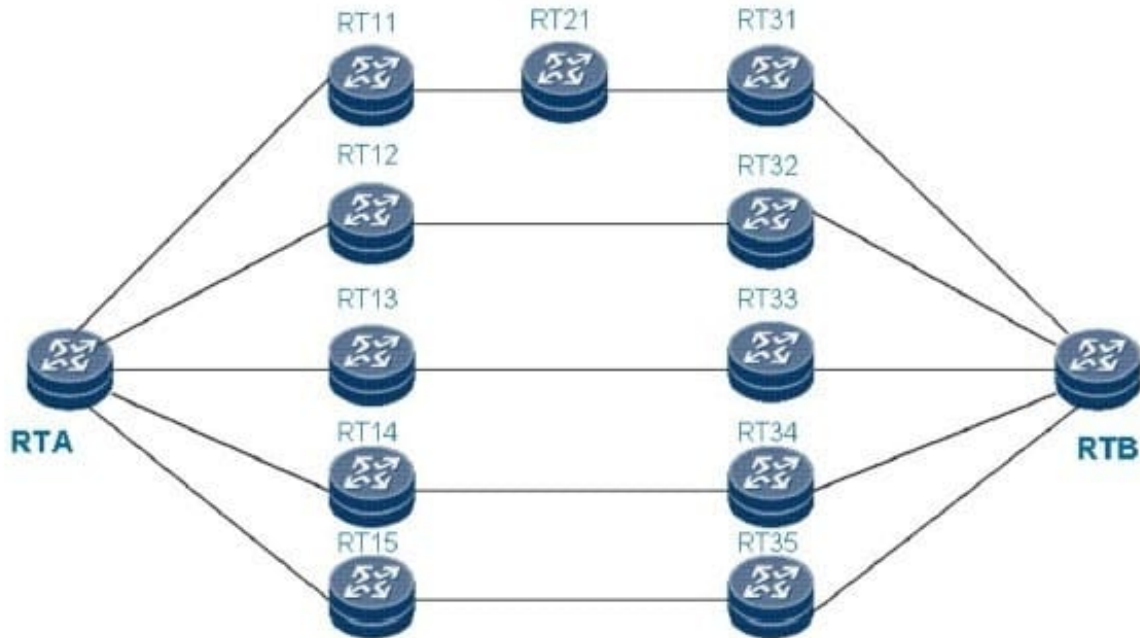
100% Passing Guarantee
100% Money Back Assurance

Following Questions and Answers are all new published by Huawei
Official Exam Center

-  **Instant Download** After Purchase
-  **100% Money Back** Guarantee
-  **365 Days** Free Update
-  **800,000+** Satisfied Customers



QUESTION 1



BFD for RSVP is a mechanism that uses BFD to check the connectivity of RSVP neighbors. As shown in

the figure, TE FRR node protection is deployed to protect a node, the blue path is the primary LSP (RTA -> RTB -> RTC -> RTD -> RTE) and the red one is the bypass LSP (RTB -> RTF -> RTD). Which of the following statements about BFD for RSVP are true?

- A. TE FRR will be triggered only when the link between RTB (acting as the PLR) and RTC (the node under protection) is faulty or RTC is faulty but will not be triggered when the link between RTC and RTD (acting as the MP) is faulty. This problem can be solved by establishing a BFD session between RTB and RTD. In this case, faults may be reported falsely or be missed.
- B. Only RSVP HELLO needs to be enabled if RSVP GR instead of TE FRR is deployed on a network.
- C. BFD for RSVP needs to be enabled only on RTB if you expect to set up a BFD for RSVP session on RTB to check the connectivity between RTB and RTC.
- D. The BFD session triggered by RSVP is for the exclusive use of RSVP.

Correct Answer: A

QUESTION 2

RTA is a leaf router that directly connects to host A through interface GigabitEthernet 1/0/0. The interface is configured as follows:

```

interface GigabitEthernet1/0/0
undo shutdown
ip address 192.168.4.2 255.255.255.0
pim sm
igmp enable
igmp version 3
igmp ssm-mapping enable
igmp static-group 232.1.1.1
Configurations in the IGMP view are as follows:
igmp
 ssm-mapping 232.1.1.0 255.255.255.0 10.10.1.1
 ssm-mapping 232.1.2.0 255.255.255.0 10.10.1.1
    
```

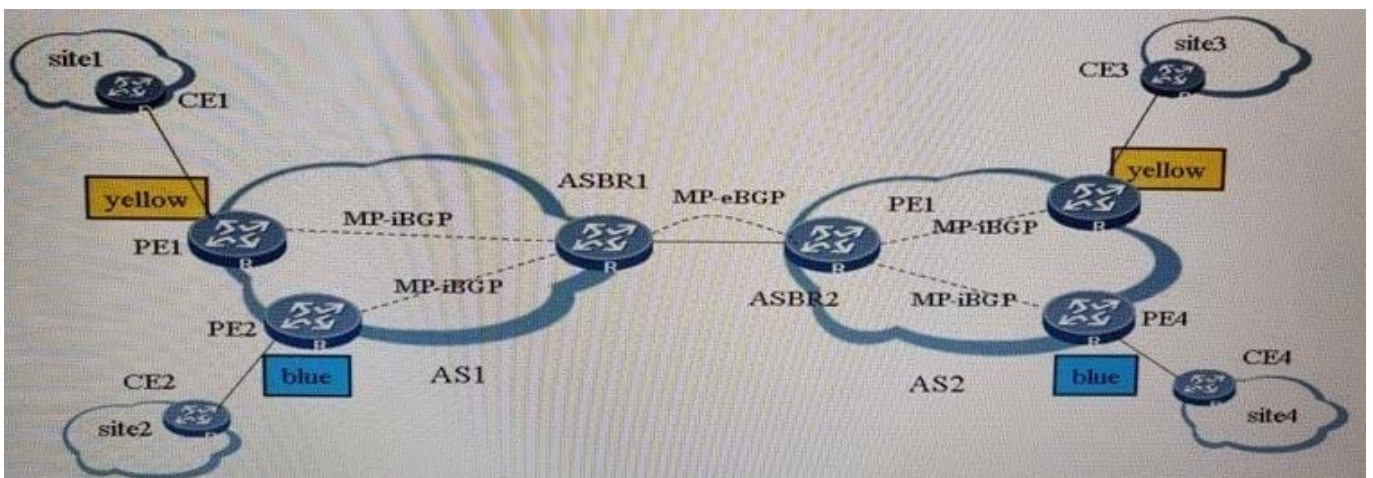
Hos a sends a IGMPv2 Report message to group 2321.2.3. Which entry can be displayed by the displayed by the igmp ssm-mapping group command?

- A. (10.10.1.1, 232.1.2.2)
- B. (10.10.1.1, 232.1.1.) and (10.10.1., 2321.2.3)
- C. (10.10.1.1, 232.1.1.1)

Correct Answer: A

QUESTION 3

Exhibit.



Which statement about inter-AS MPLS VPN Option_B is false?

- A. The ASBR cannot be used as a PE simultaneously and a CE cannot be connected to an ASBR.

- B. When ASBRs are directly connected, packets transmitted on the VPN between them have only one label.
- C. The undo policy vpn-target command must be configured in the VPN4 address family view of the BGP neighbor of the ASBR to prevent routes from being filtered automatically.
- D. When ASBRs are directly connected, VPN traffic can be forwarder between them only after MPLS is enabled on the interfaces.

Correct Answer: A

QUESTION 4

If a (*, G) entry exists in the RP, which of the following statements about the source registration process are true in PIM-SM?

- A. The first hop DR connecting to the source encapsulates received multicast data into PIM registration information and unicasts the encapsulated information to the RP.
- B. The first-hop DR connecting to the source sends received multicast data to the RP hop by hop.
- C. The RP decapsulates registration information and uses RPT to send data packets to be sent to the multicast group to the outbound interface.
- D. The RP sends an (S, G) Join message hop by hop to the first hop DR connected to the multicast source to add the multicast source to the SPT.
- E. The RP unicasts a registration stop message to the first hop router connected to the multicast source.

Correct Answer: ACDE

QUESTION 5

Which multicast protocol can support the SSM? (

- A. BGP
- B. OSPF
- C. PIMSSM
- D. PIMDM
- E. IGMPv2
- F. MLDv2
- G. IGMPv3

Correct Answer: CFG